

**Anacapa Consulting Services Inc.
Workshop on Climate Resiliency/Adaptation
April 28, 2016**

Links and Handout

Links:

Kaiser Foundation Study

<http://kff.org/global-health-policy/poll-finding/2016-survey-of-americans-on-the-u-s-role-in-global-health>

Cal-Adapt Website

<http://cal-adapt.org/>

Ideas from other governments and countries:

<http://climate-adapt.eea.europa.eu/uncertainty-guidance/topic2>

Scoping Plan Update:

<http://www.arb.ca.gov/cc/scopingplan/scopingplan.htm>

Safeguarding California: Reducing Climate Risk: An Update to the 2009 California Climate Adaptation Strategy (July 2014)::

http://resources.ca.gov/docs/climate/Final_Safeguarding_CA_Plan_July_31_2014.pdf

NOAA data on climate change:

<http://www.noaa.gov/climate>

DWR: Climate Change Handbook on Regional Water Planning

<http://www.water.ca.gov/climatechange/CCHandbook.cfm>

Adaptation in the UK: a decision-making process, 2010

<http://www.lse.ac.uk/GranthamInstitute/publication/adaptation-in-the-uk-a-decision-making-process/>

CAPCOA, Quantifying Greenhouse Gas Mitigation Measures, 2010, <http://www.capcoa.org/wp-content/uploads/2010/11/CAPCOA-Quantification-Report-9-14-Final.pdf>

Downloads from Cal-Adapt

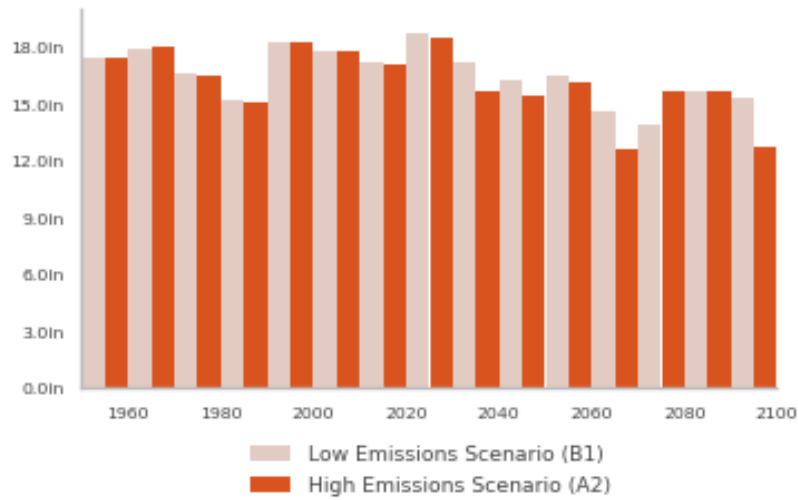
Rainfall Projections



Ventura County

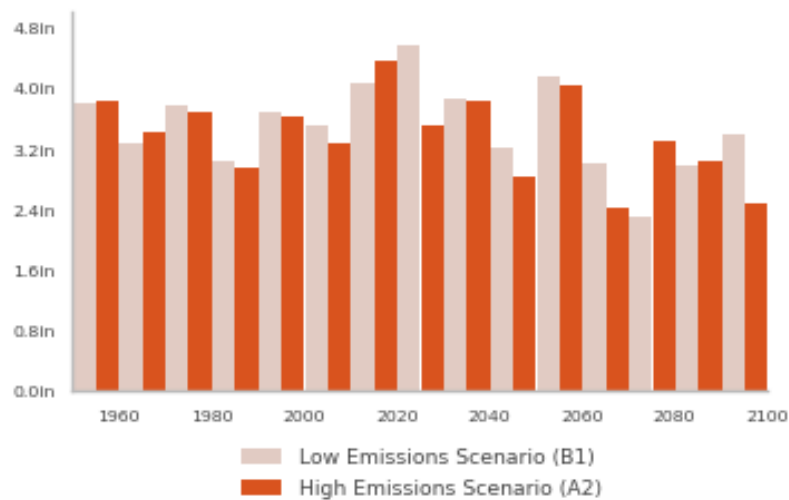
MONTH: **Annual** ▼
MODEL: **All** ▼

Lock to one location Metric Emissions Scenario: **LOW** **HIGH**

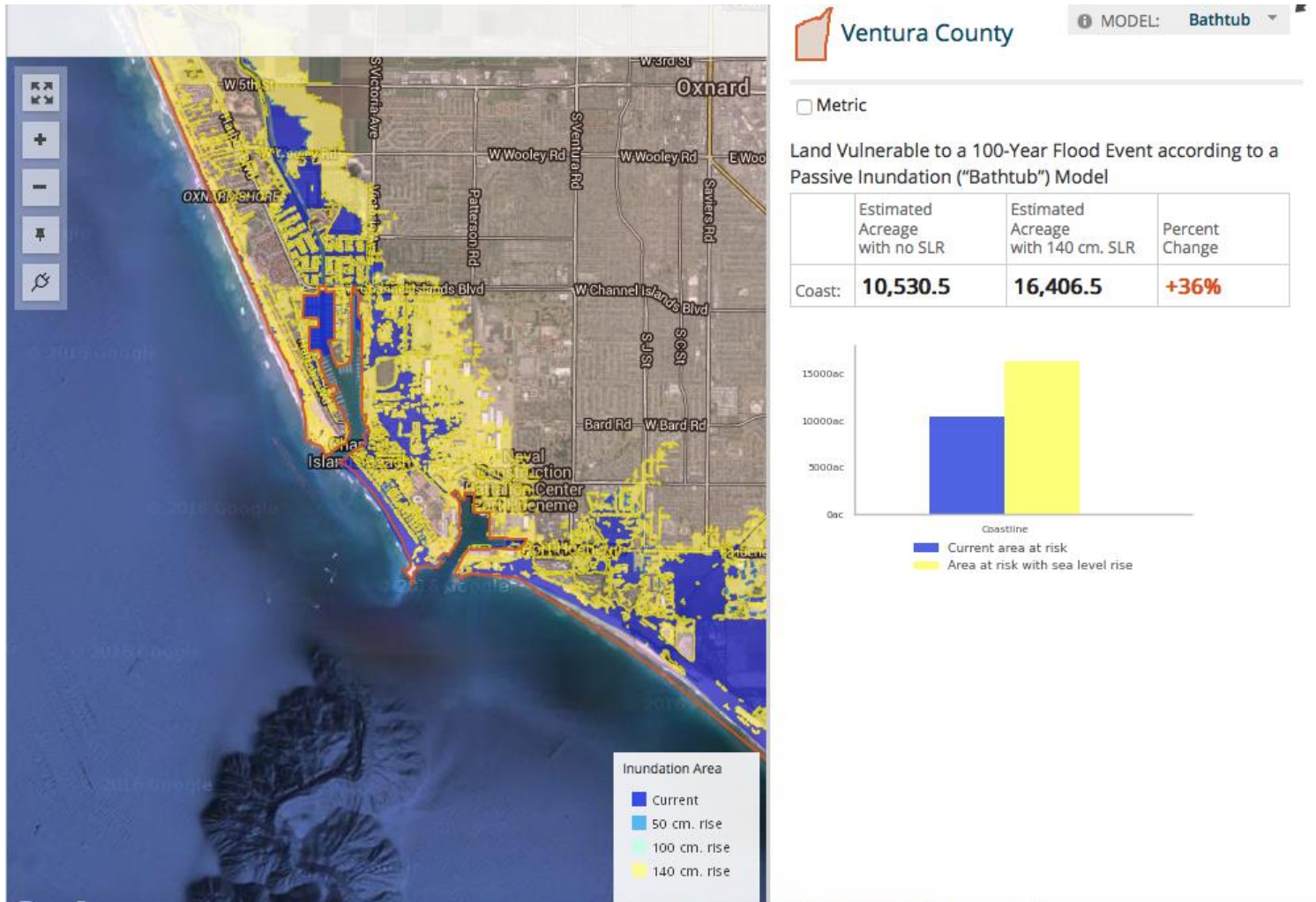


Ventura County

MONTH: **February** ▼
MODEL: **All** ▼



Sea-level Rise



Extreme Heat Days

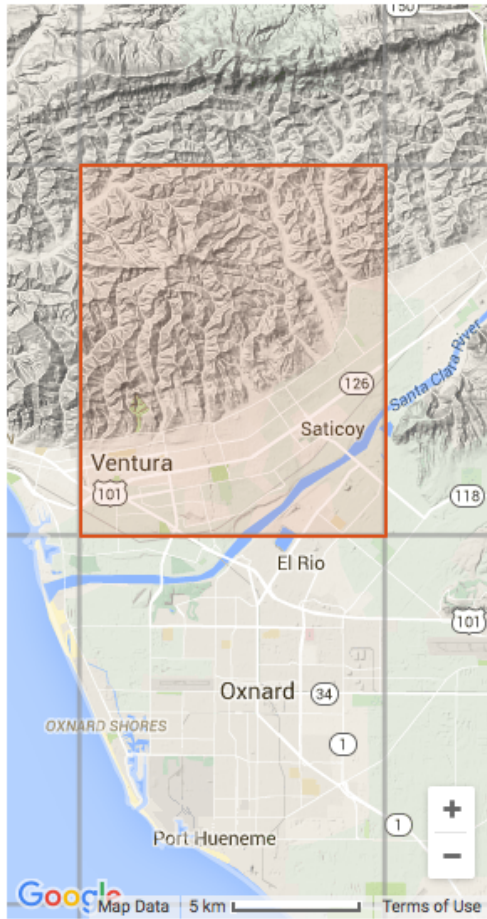
Ventura

Emissions Scenario: **LOW** **HIGH**

[ABOUT THE TOOL](#)

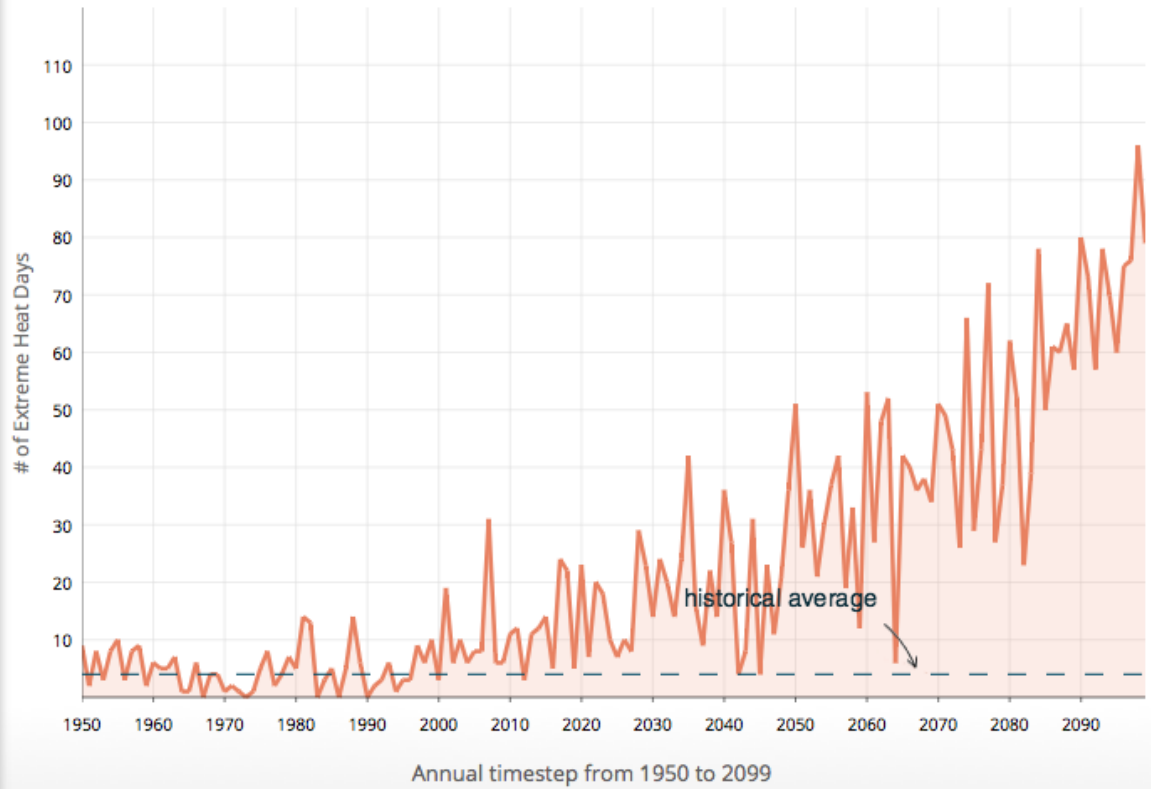
[CHART](#)

[DISCLAIMER & UNCERTAINTY](#)



Number of Extreme Heat Days by Year

OPTIONS



Historical Avg. # Extreme Heat Days: 4

Extreme Heat Day Threshold: 87°F

All values based on

Risk of Wildfires

