

**VENTURA COUNTY  
PUBLIC HEALTH**

**HIV/AIDS SURVEILLANCE  
FINAL REPORT**

**JANUARY 2003 - DECEMBER 2003**

PREPARED BY  
VENTURA COUNTY PUBLIC HEALTH  
THE HIV/AIDS CENTER  
OFFICE OF HIV/AIDS SURVEILLANCE

# VENTURA COUNTY PUBLIC HEALTH

This final HIV/AIDS Surveillance Report will discuss reported cases of HIV/AIDS to the Ventura County Public Health Department from January 2003 to December 2003. Ventura County Public Health has been conducting active AIDS surveillance since 1987. **HIV reporting began July 1, 2002.**

<b>CUMULATIVE DATA FOR HIV /AIDS</b>					
	<b>VENTURA HIV</b>	<b>VENTURA AIDS</b>	<b>VENTURA OUT OF CTY</b>	<b>CALIFORNIA AIDS (12/03)</b>	<b>USA AIDS (12/02)</b>
ADULT CASES	246	922	296	133,219	877,275
ADULT DEATHS	2	533	140	78,685	496,354
PED CASES	5	3	1	639	9,300
PED DEATHS	0	2	0	388	5,315
TOTALS	251	925	297	133,858	886,575
DEATHS	2	535	140	79,073	501,669

- Cumulative data, numbers may change due to delays in reporting.
- Non-resident ( Out of County) cases are diagnosed cases of HIV/AIDS reported by another county or state but who are now residing and receiving care in Ventura County. These cases are counted at the time they are reported to the Health Department, not when they were diagnosed.
- There were **thirty** new Non-Resident cases in 2003 compared to **nineteen** reported in 2002.

## COMPARISON POINTS FOR HIV/AIDS IN VENTURA COUNTY

THIS TABLE PROVIDES A SIDE BY SIDE COMPARISON OF THE HIV/AIDS CASES ENTERED IN '2003. FOR EXAMPLE, THE HIV CASES ENTERED WERE PRIMARILY WHITE MALES, AGE 30-39, WHOSE RISK FACTOR WAS MSM. THE AIDS CASES ENTERED IN 2003 WERE PRIMARILY HISPANIC MALES, AGE 30-50, WHOSE RISK IS STILL UNDER INVESTIGATION.

### JANUARY 2003 – DECEMBER 2003

	<b>HIV CASES</b>	<b>AIDS CASES</b>
AGE	30-39 (35%)	30-39 (30%) and > 40 ( 30%)
RACE/ETHNICITY	70 % White	47 % Hispanic
MALE	82%	90%
FEMALE	18%	10%
EXPOSURE CATEGORY	52% MSM ( Men sex w/ men)	34% Risk not reported ( under investigation)

<b>VENTURA COUNTY AIDS CASES</b>		
<b>AIDS</b>	<b>2003</b>	<b>2002</b>
#CASES REPORTED	30	45
#DEATHS	8	13
MALES	27 (90%)	39 (86%)
FEMALES	3 (10%)	6 (14%)
<b>RACE</b>		
WHITE	12 (40%)	25 (61%)
HISPANIC	14 (47%)	13 (32%)
BLACK	2 (7%)	1(2%)
<b>AGE AT DIAGNOSIS</b>		
<19 YEARS	2 (7%)	0
20-29	2 (7%)	5 (12%)
30-39	9 (30%)	11 (27%)
40-49	8 (27%)	17 (41%)
>49	9 (30%)	8 (20%)
<b>EXPOSURE CATEGORY</b>		
MEN SEX WITH MEN	8 (28%)	25 (61%)
IDU	5 (17%)	4 (10%)
HETEROSEXUAL	2 (7%)	1 (2%)
NO RISK ID( <small>under investigation</small> )	10 (34%)	7 (17%)
<b>DISEASE CATEGORY</b>		
PCP	8 (27%)	4 (10%)
KS	0	1 (2%)
CD4	14 (47%)	25 (61%)
OTHER OI'S (NO PCP)	8 (27%)	11 (27%)
<b>FACILITY OF DIAGNOSIS</b>		
VCMC	27 %	48%
PRIMARY MD	27 %	24%
LA FACILITY	13%	4%
VC PRIVATE HOSPITAL	27 %	7%
OTHER	6%	7%

- **Seventy percent** of the patients diagnosed with AIDS in the year 2003 were diagnosed with HIV and AIDS at the same time, compared to being diagnosed HIV+ and years later AIDS. This is an increase from last year in which fifty four percent were diagnosed HIV and AIDS at the same time. This is well above the national average.
- There was a decrease in the number of AIDS cases reported in 2003, from 45 cases in 2002 to 30 in 2003.
- Race/ ethnicity was evenly distributed between white and hispanics.
- Age trends remain the same as in previous years, predominantly 30 years and over.
- There is a little more diversity in the facilities of diagnosis than in previous years. Probably due to the initiation of HIV reporting. More healthcare providers are now cognizant of reporting laws.
- Due to the volume of HIV and AIDS cases there are more cases with no identifiable risk. No Identifiable Risk (NIR) means that there is still a determination to be made on how the case was exposed to HIV. The CDC requires an investigation on these cases.

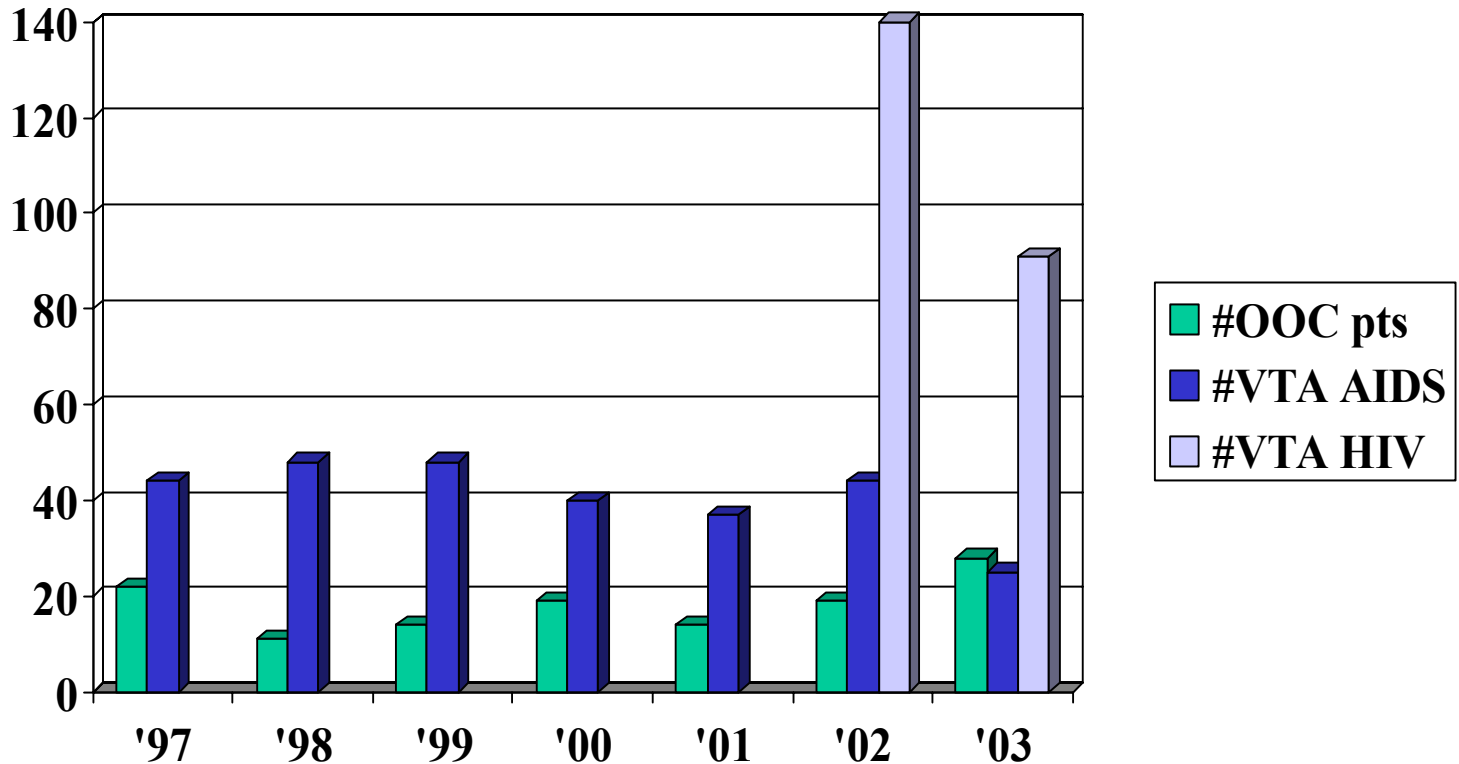
<b>VENTURA COUNTY HIV CASES</b>		
<b>HIV</b>	<b>2003</b>	
#CASES REPORTED	115	
#DEATHS	2	
MALES	94 ( 82%)	
FEMALES	21 (18%)	
<b>RACE</b>		
WHITE	70 (61%)	
HISPANIC	35 (30%)	
BLACK	7 (6%)	
<b>AGE</b>		
<19 YEARS	10 (8%)	
20-29	20 (17%)	
30-39	40 (35%)	
40-49	36 (31%)	
>49	9 (8%)	
<b>EXPOSURE CATEGORY</b>		
MEN SEX WITH MEN	57 (52%)	
IDU	12 (11%)	
HETEROSEXUAL	3 (3%)	
NO RISK ID (under investigation)	33 (30%)	
<b>FACILITY OF DIAGNOSIS</b>		
VCMC	27%	
PRIMARY MD	33%	
LA FACILITY	31%	
VC PRIVATE HOSPITAL	5%	
OTHER	4%	

**HIV reporting began July 1, 2002.** We now have approximately 1.5 years of data. We are still retro-actively reporting cases, and will continue to do so for the first 2-4 years. There are also a large number of duplications with other counties, in particular Los Angeles, which are still being investigated.

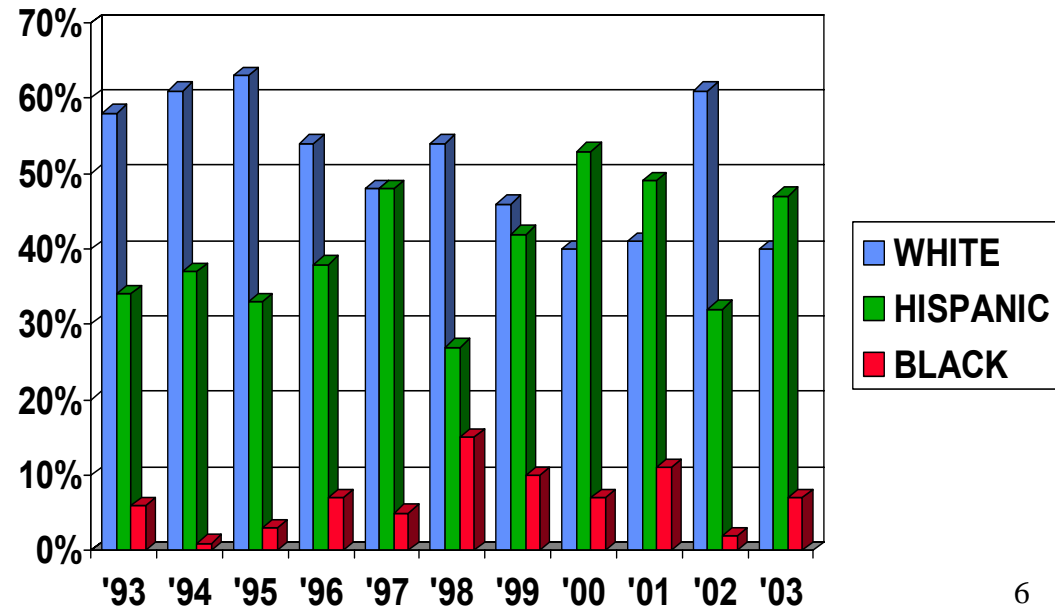
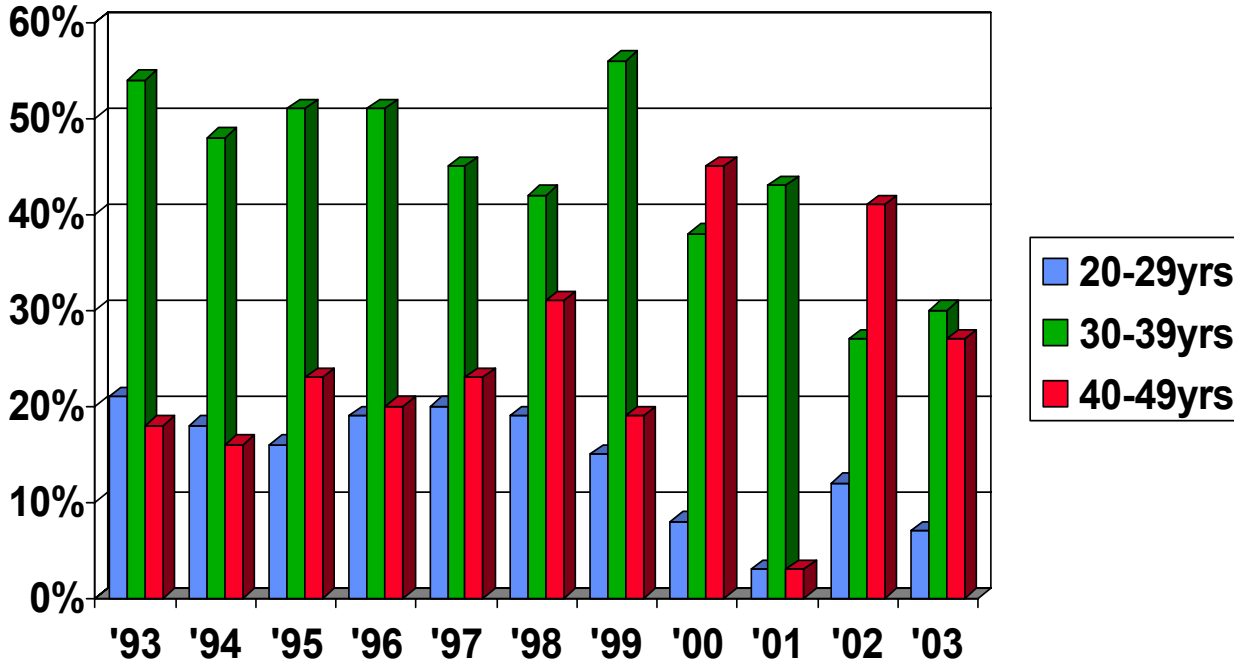
- The HIV cases are primarily white (61%).
- Most cases are over the age of 30.
- The major risk category is MSM ( men having sex with men).
- Again, there is more diversity in the facilities where HIV was diagnosed.
- A large proportion of cases have no identified risk and are under investigation. For example, all heterosexual transmissions are investigated per CDC requirements, unless there is an identified HIV positive partner. 80 to 90% of these cases are investigated and then re-classified to another risk.

# VENTURA COUNTY HIV/AIDS SURVEILLANCE

A comparison of Ventura County HIV/AIDS cases and Out of County (diagnosed in another county or state and now living in Ventura) cases reported each year

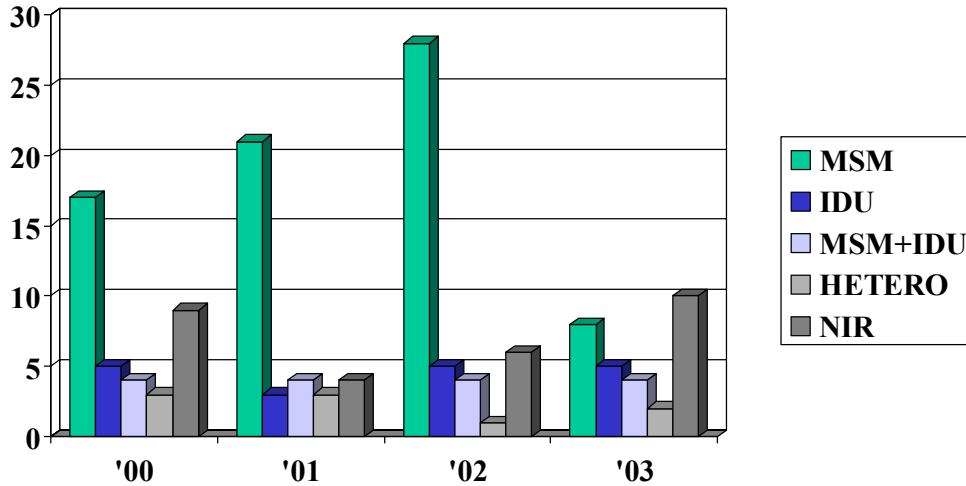


# VENTURA COUNTY PUBLIC HEALTH AIDS STATISTICS

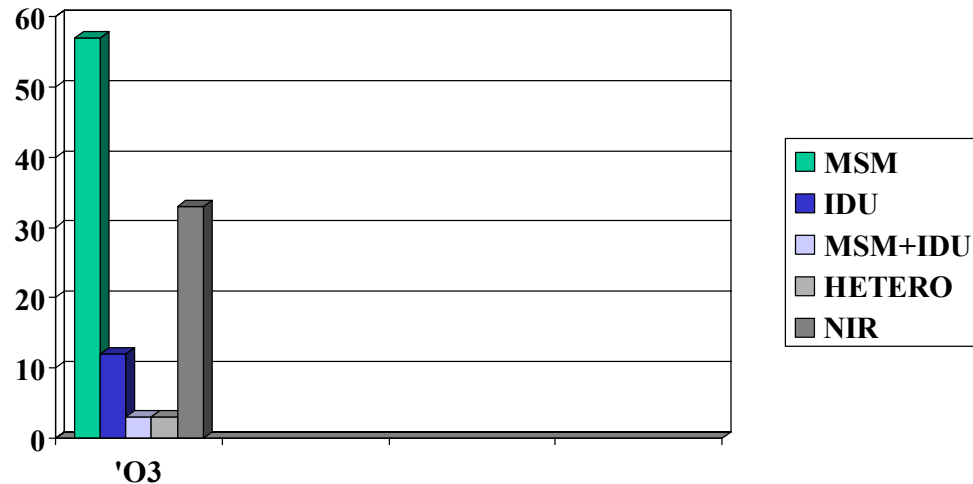


# VENTURA COUNTY PUBLIC HEALTH HIV/AIDS SURVEILLANCE “MODE OF TRANSMISSION”

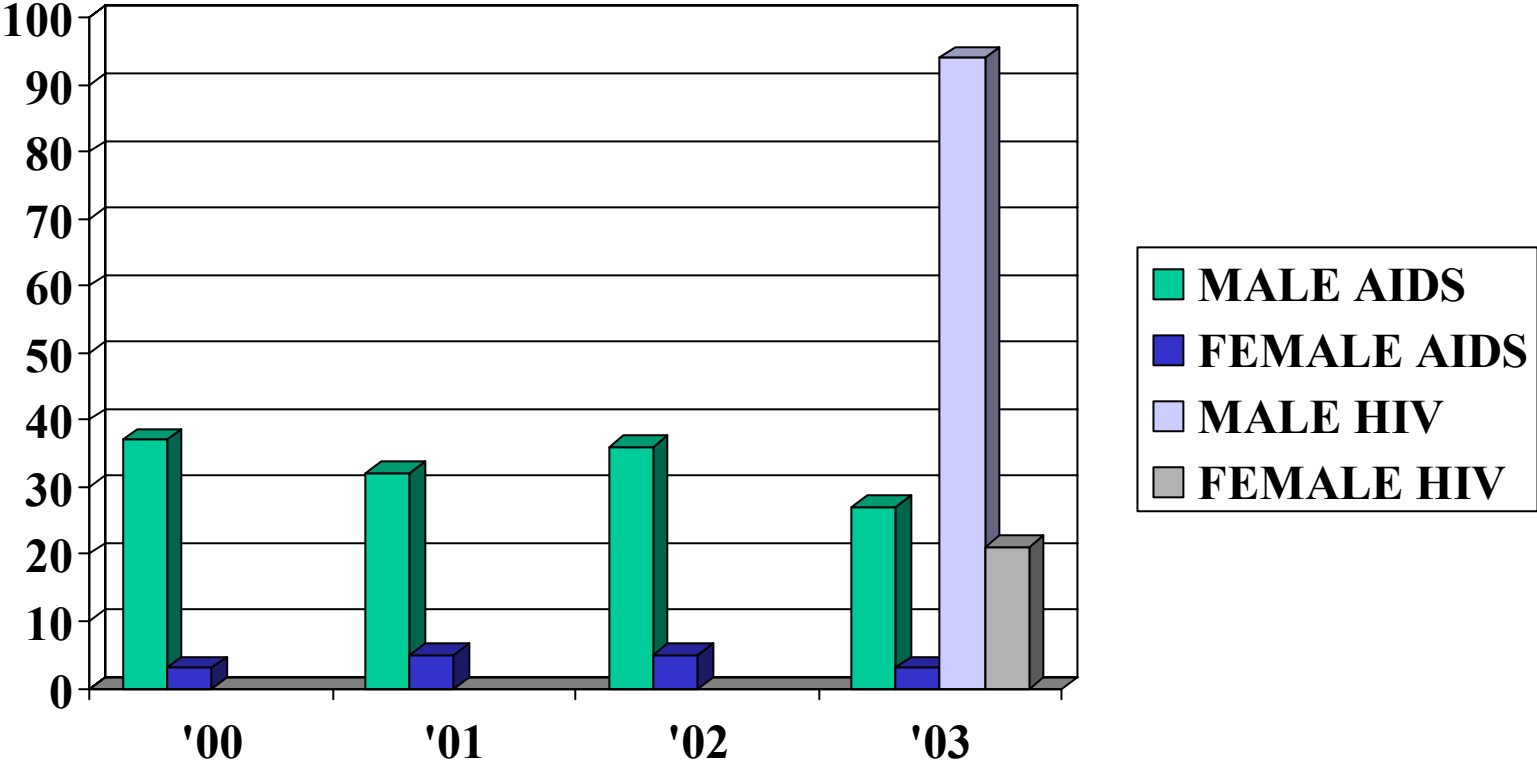
## AIDS CASES



## HIV CASES



**VENTURA COUNTY PUBLIC HEALTH  
HIV/AIDS SURVEILLANCE  
REPORTED CASES OF HIV/AIDS**



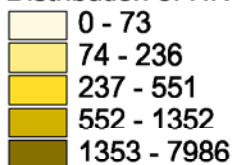


# Cumulative HIV Cases in California by County, as of December 31, 2003

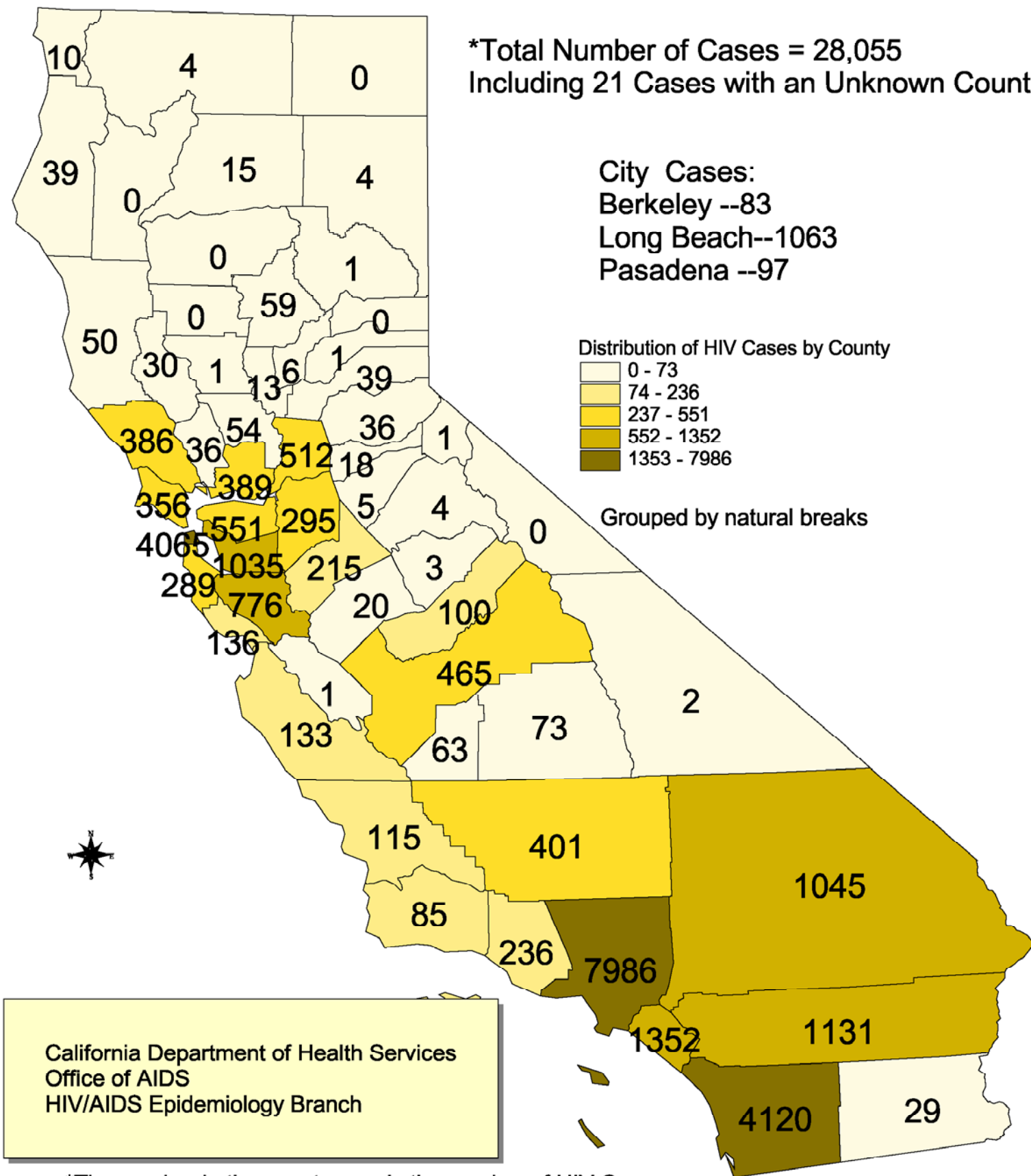
\*Total Number of Cases = 28,055  
Including 21 Cases with an Unknown County

City Cases:  
Berkeley --83  
Long Beach--1063  
Pasadena --97

Distribution of HIV Cases by County



Grouped by natural breaks



California Department of Health Services  
Office of AIDS  
HIV/AIDS Epidemiology Branch

\*The number in the county equals the number of HIV Cases.



\*The number in the county equals the number of HIV Cases.