

2020 Census

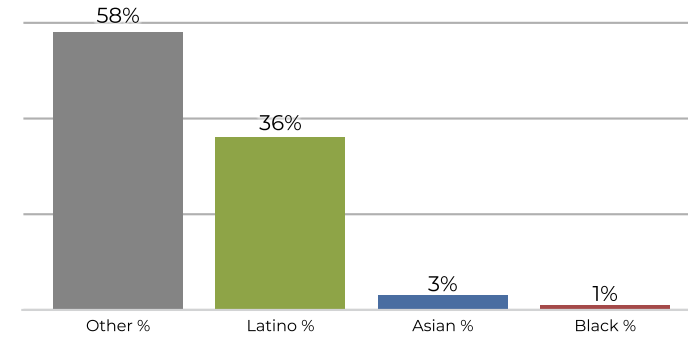
	1	2	3	4	5
Population	160,806	174,195	173,107	173,042	164,240
Deviation	-8,272	5,117	4,029	3,964	-4,838
Deviation %	-4.9%	3.0%	2.4%	2.3%	-2.9%
Other	94,197	120,579	51,775	103,565	31,894
Other %	58.6%	69.2%	29.9%	59.8%	19.4%
Latino	57,867	32,705	106,397	49,872	119,436
Latino %	36.0%	18.8%	61.5%	28.8%	72.7%
Asian	6,271	18,607	11,851	17,030	9,498
Asian %	3.9%	10.7%	6.8%	9.8%	5.8%
Black	2,471	2,304	3,084	2,575	3,412
Black %	1.5%	1.3%	1.8%	1.5%	2.1%

Citizen Voting Age Population (CVAP)

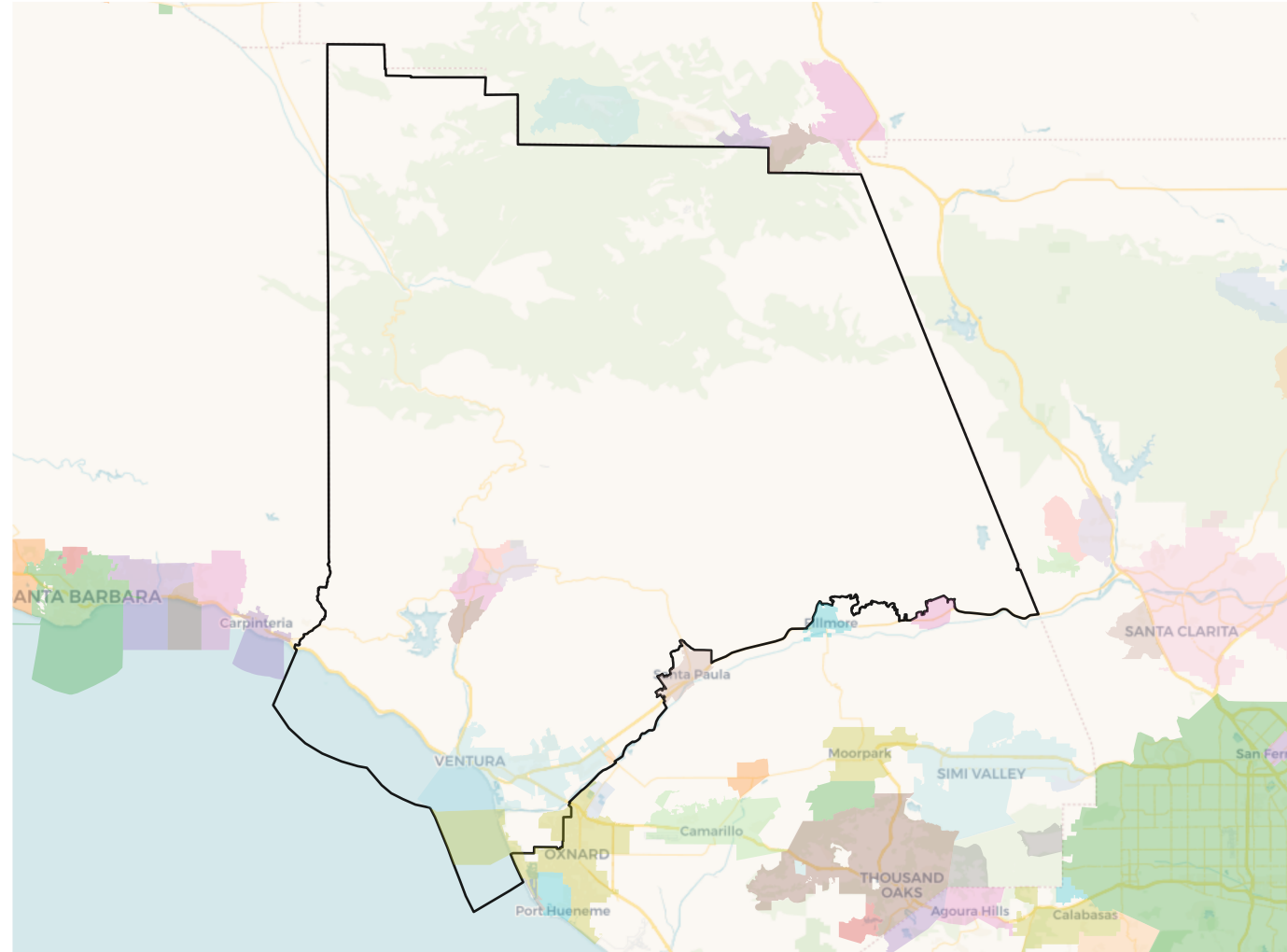
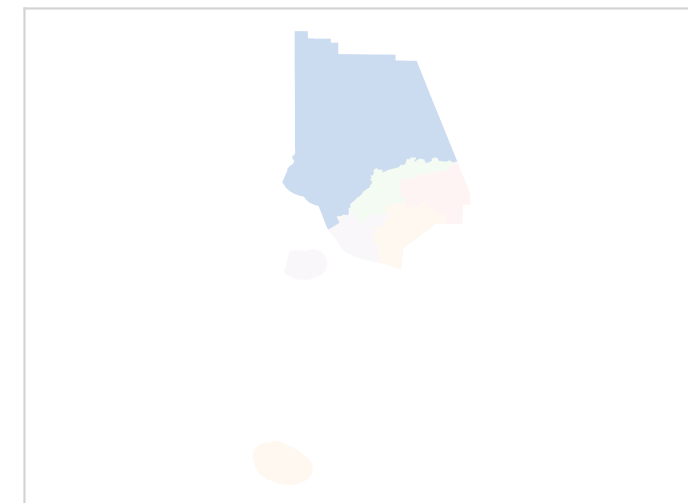
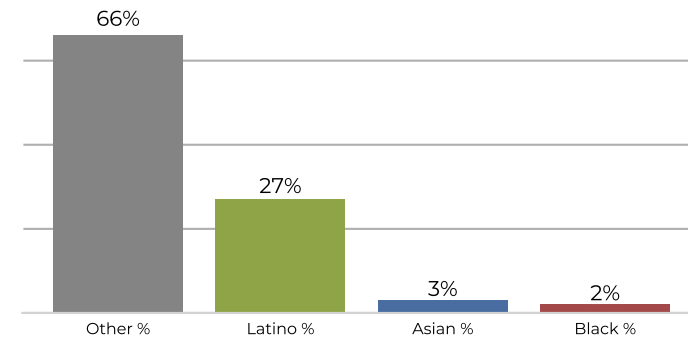
	1	2	3	4	5
Total CVAP	115,443	125,340	101,969	124,619	90,520
Other CVAP	77,216	98,266	41,836	86,594	29,721
Other CVAP %	66.9%	78.4%	41.0%	69.5%	32.8%
Latino CVAP	31,517	15,885	51,059	25,777	50,593
Latino CVAP %	27.3%	12.7%	50.1%	20.7%	55.9%
Asian CVAP	4,413	9,746	7,240	10,364	6,607
Asian CVAP %	3.8%	7.8%	7.1%	8.3%	7.3%
Black CVAP	2,298	1,443	1,834	1,885	3,599
Black CVAP %	2.0%	1.2%	1.8%	1.5%	4.0%

District 1

2020 Census



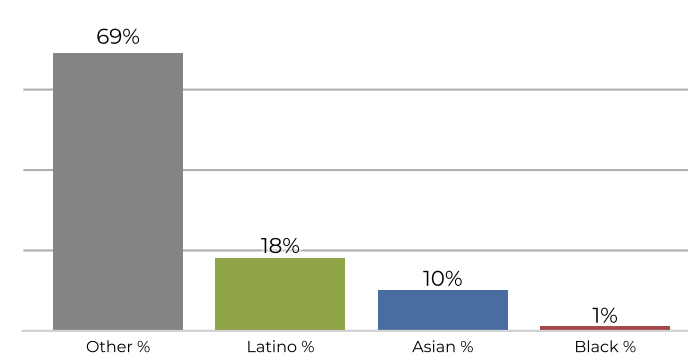
Citizen Voting Age Population



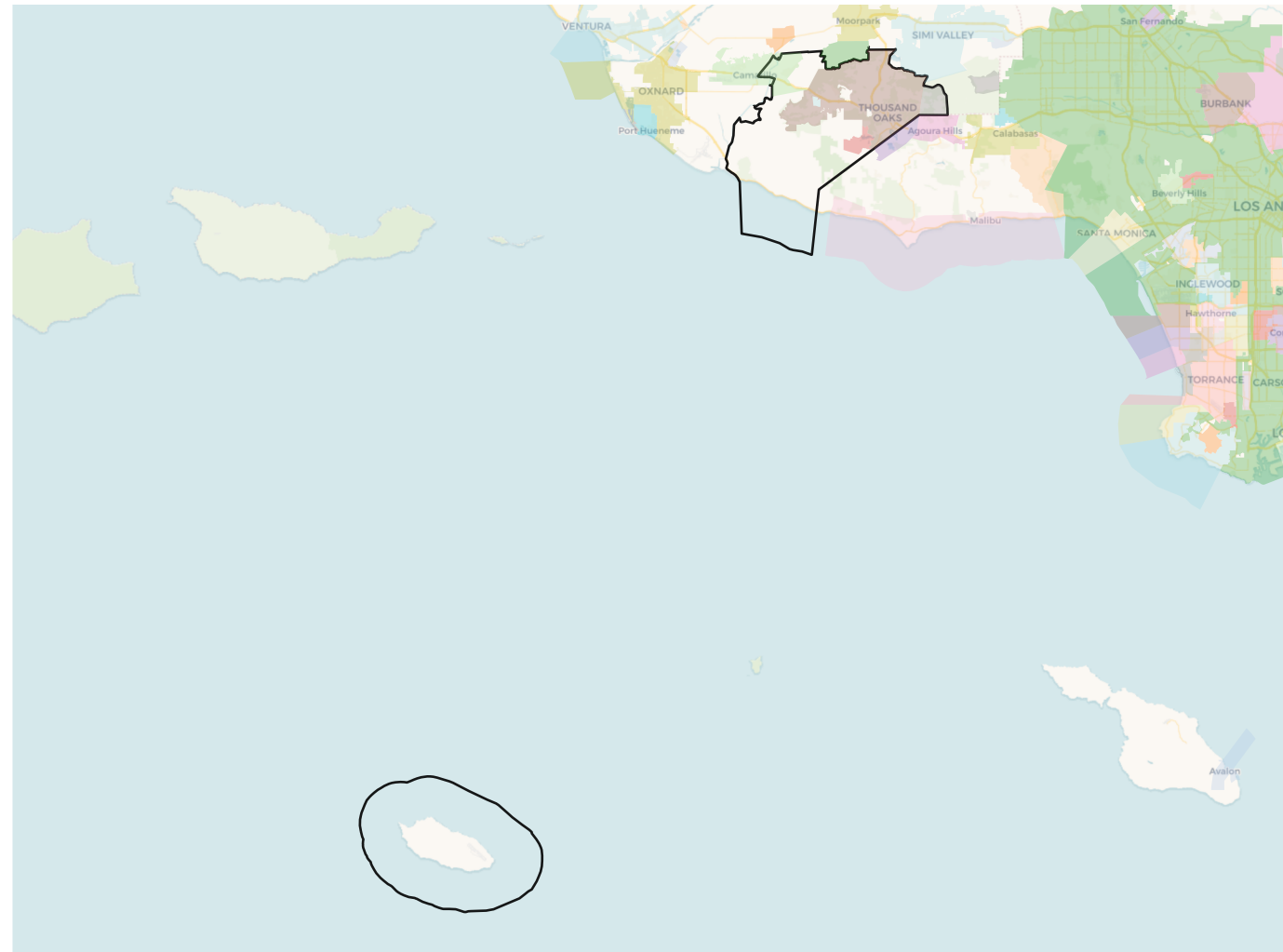
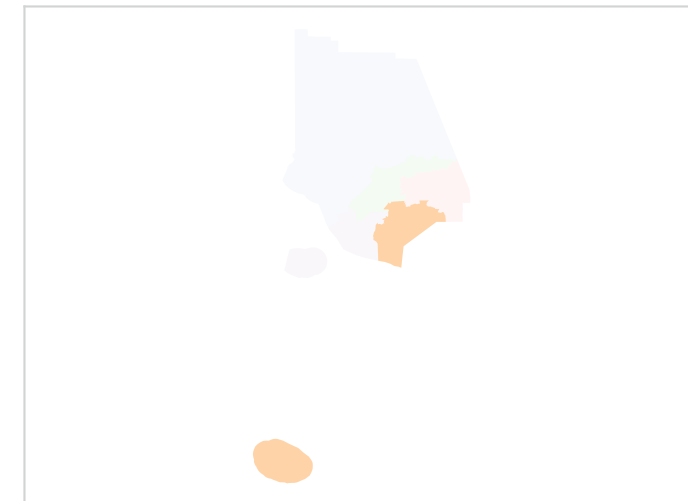
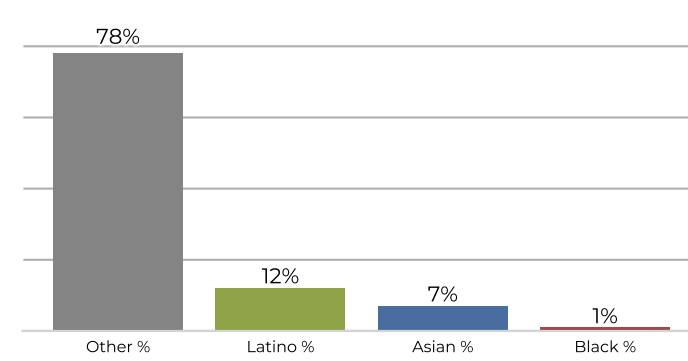
Population	Deviation	Deviation %	Other	Other %	Latino	Latino %	Asian	Asian %	Black	Black %
160,806	-8,272	-4.9%	94,197	58.6%	57,867	36.0%	6,271	3.9%	2,471	1.5%
Total CVAP	Other CVAP	Other CVAP %	Latino CVAP	Latino CVAP %	Asian CVAP	Asian CVAP %	Black CVAP	Black CVAP %		
115,443	77,216	66.9%	31,517	27.3%	4,413	3.8%	2,298	2.0%		

District 2

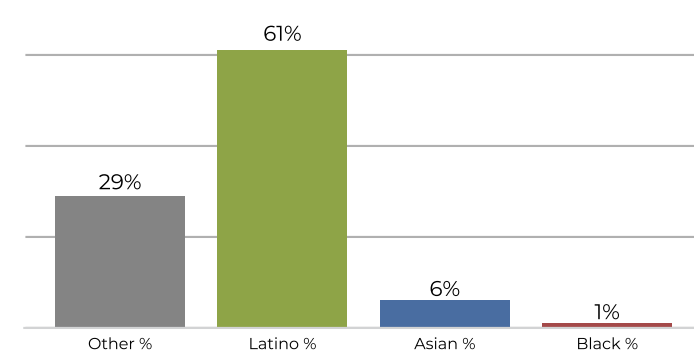
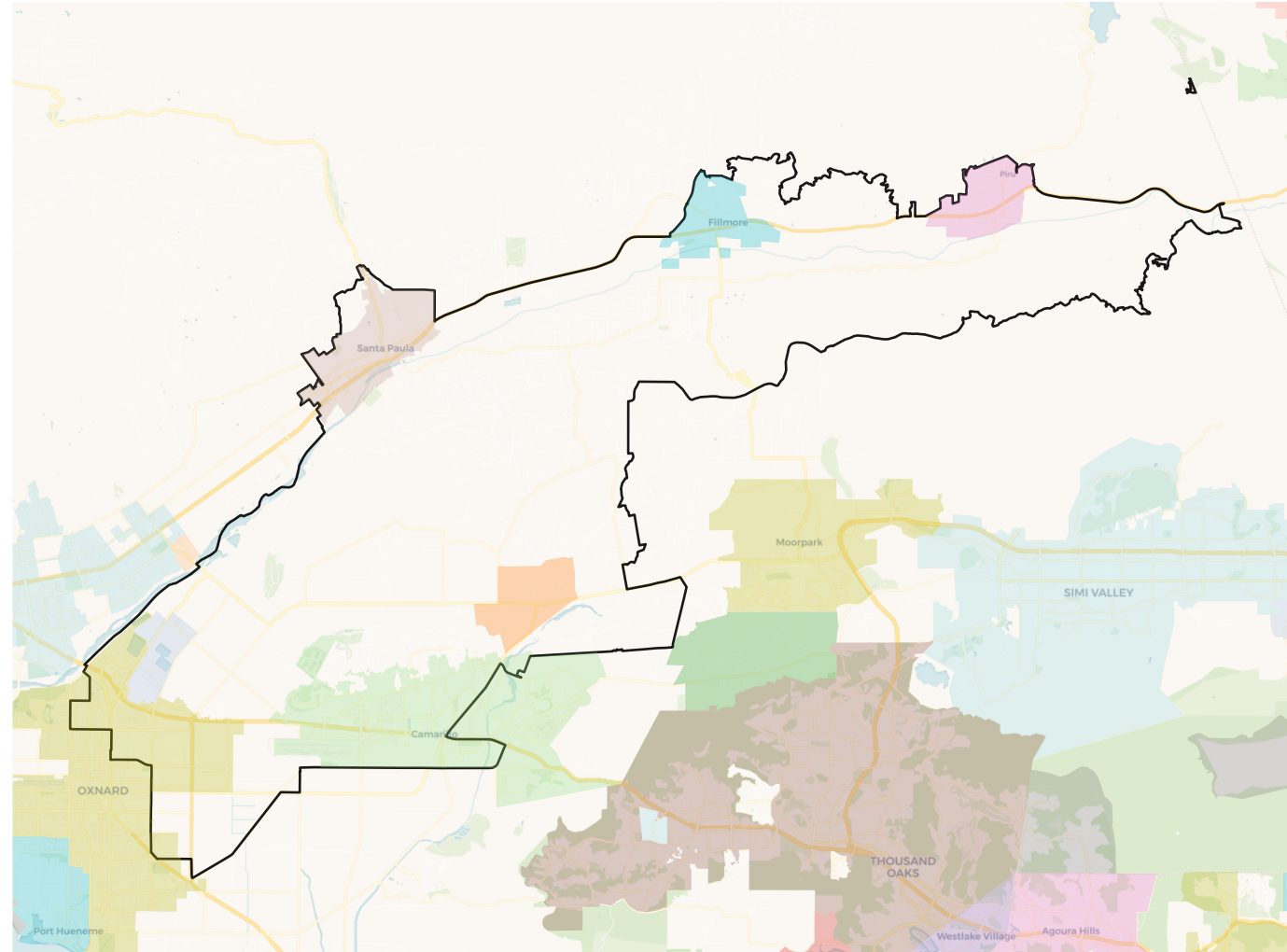
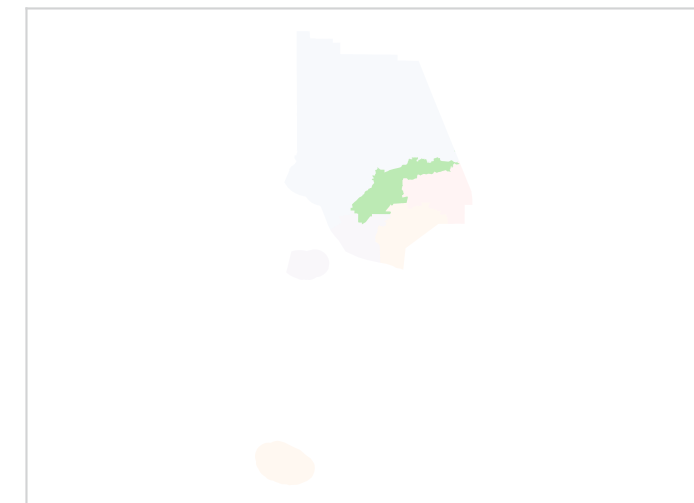
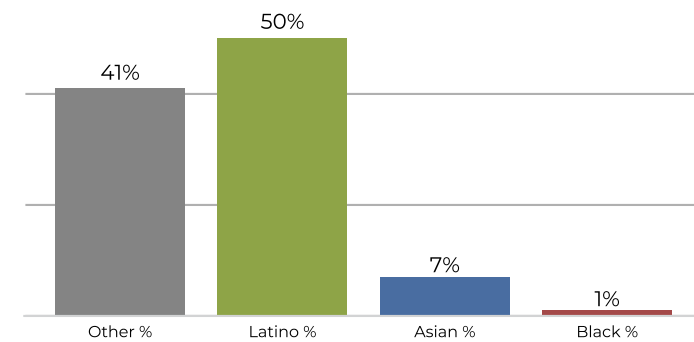
2020 Census



Citizen Voting Age Population



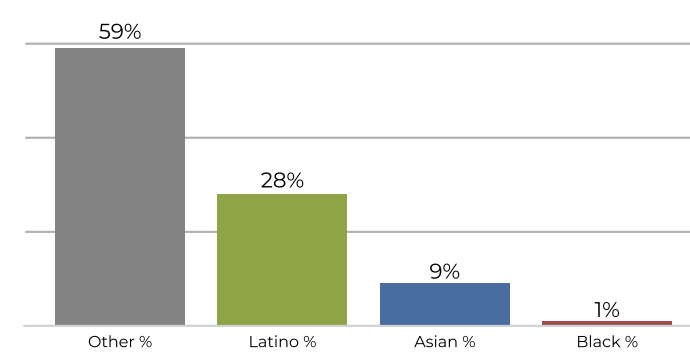
Population	Deviation	Deviation %	Other	Other %	Latino	Latino %	Asian	Asian %	Black	Black %
174,195	5,117	3.0%	120,579	69.2%	32,705	18.8%	18,607	10.7%	2,304	1.3%
Total CVAP	Other CVAP	Other CVAP %	Latino CVAP	Latino CVAP %	Asian CVAP	Asian CVAP %	Black CVAP	Black CVAP %		
125,340	98,266	78.4%	15,885	12.7%	9,746	7.8%	1,443	1.2%		

District 3
2020 Census

Citizen Voting Age Population


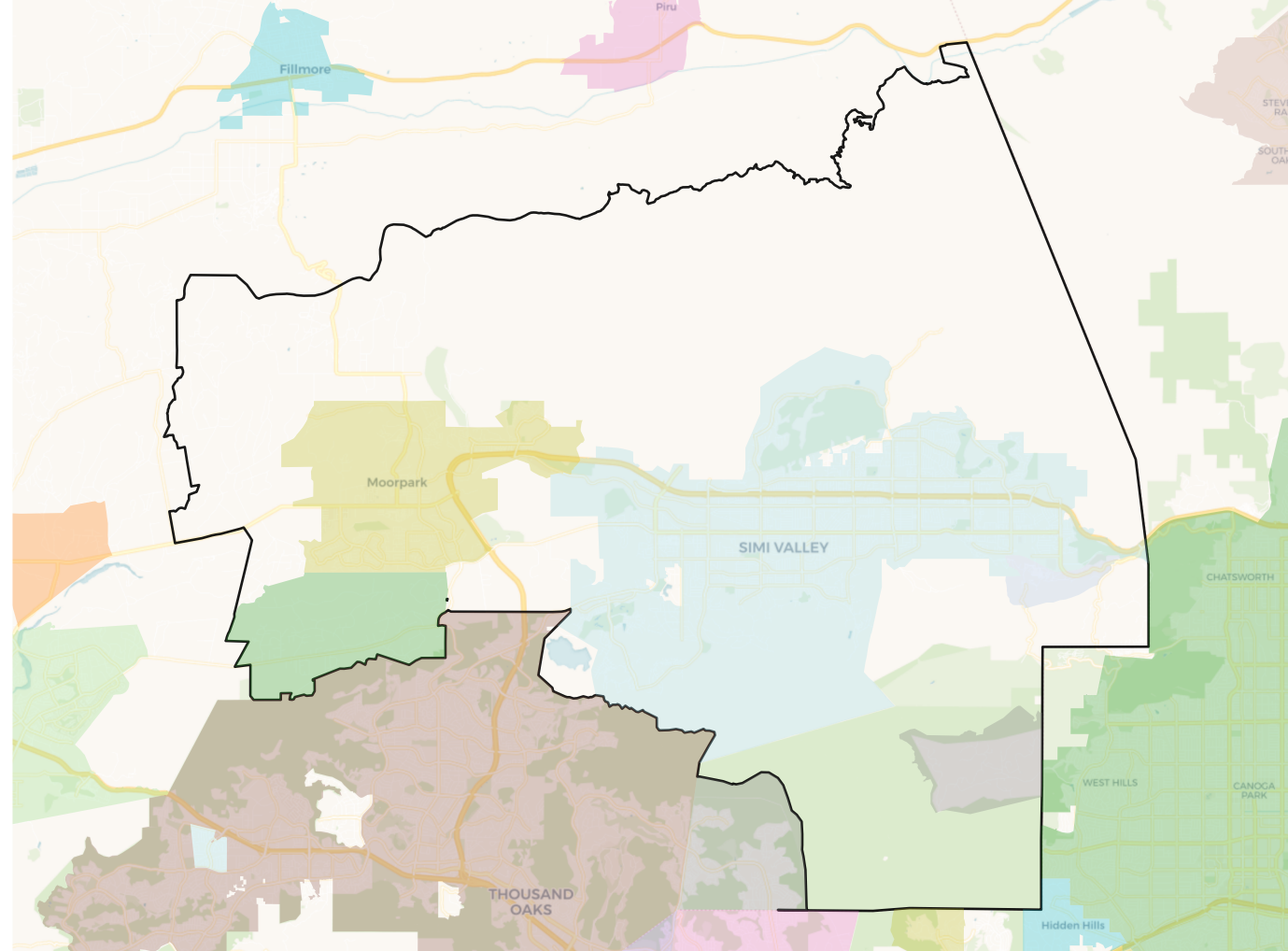
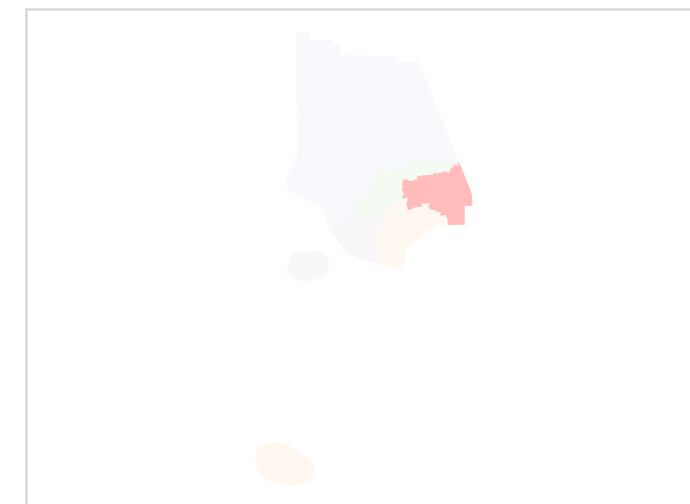
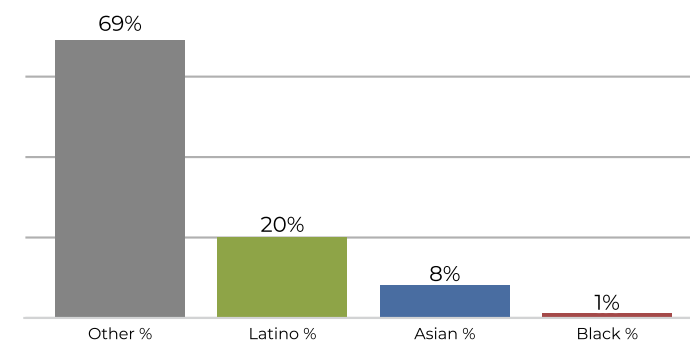
Population	Deviation	Deviation %	Other	Other %	Latino	Latino %	Asian	Asian %	Black	Black %
173,107	4,029	2.4%	51,775	29.9%	106,397	61.5%	11,851	6.8%	3,084	1.8%
Total CVAP	Other CVAP	Other CVAP %	Latino CVAP	Latino CVAP %	Asian CVAP	Asian CVAP %	Black CVAP	Black CVAP %		
101,969	41,836	41.0%	51,059	50.1%	7,240	7.1%	1,834	1.8%		

District 4

2020 Census



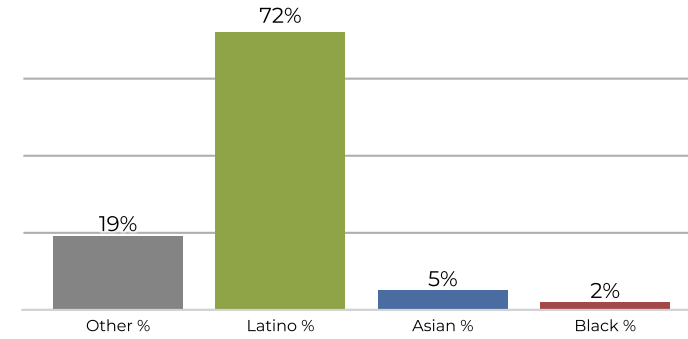
Citizen Voting Age Population



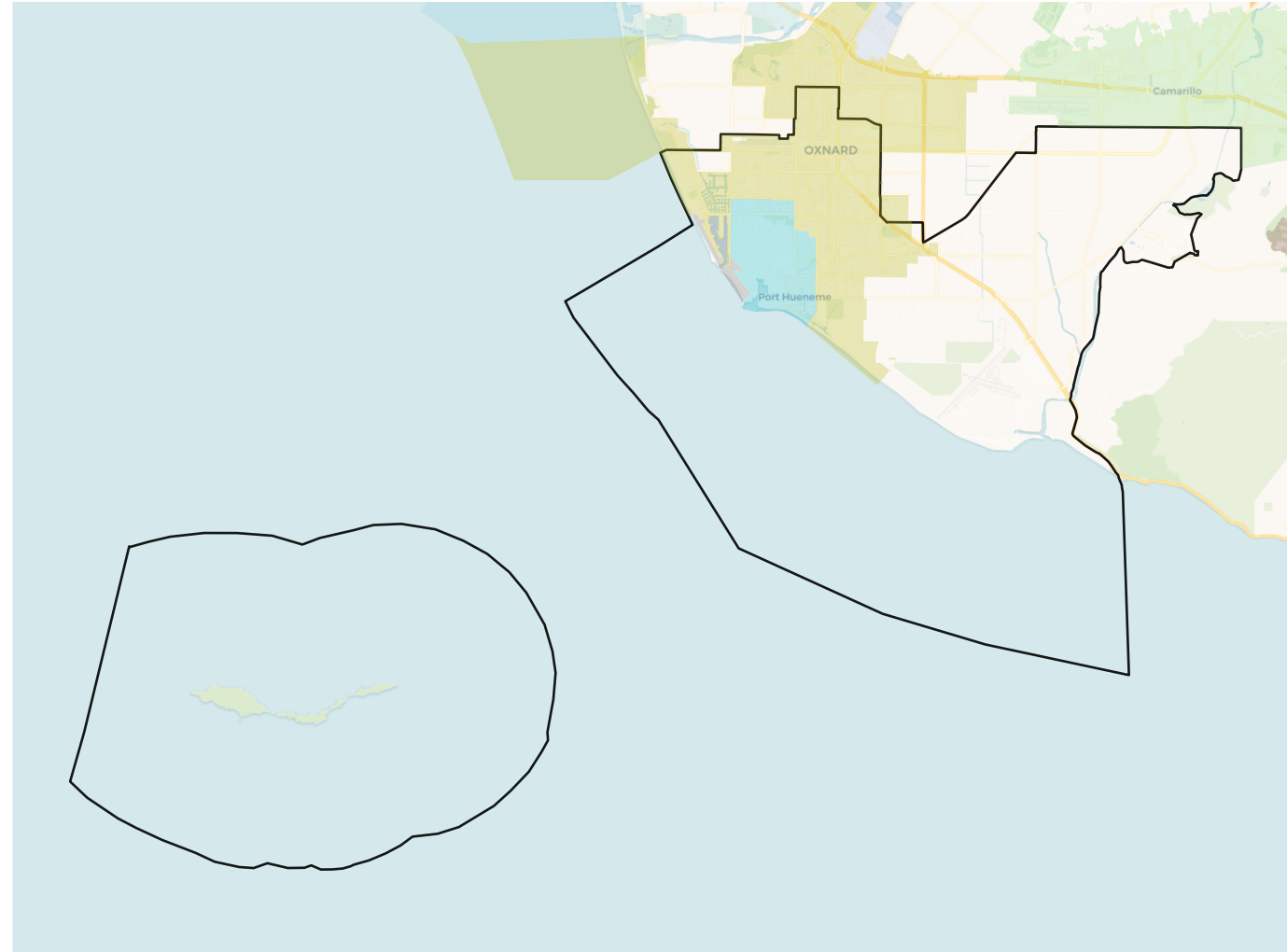
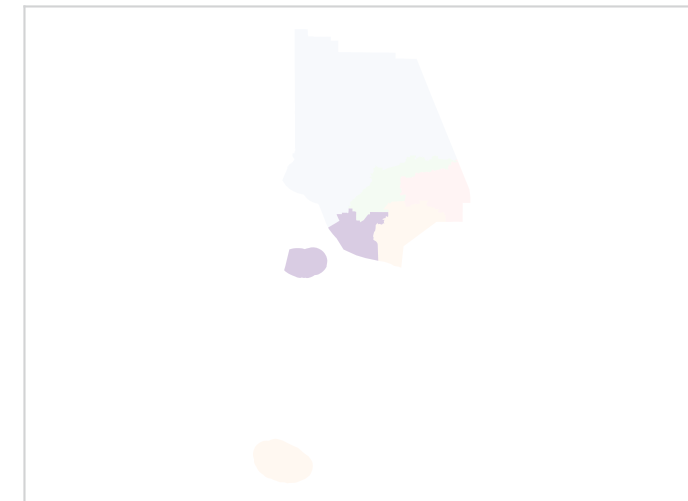
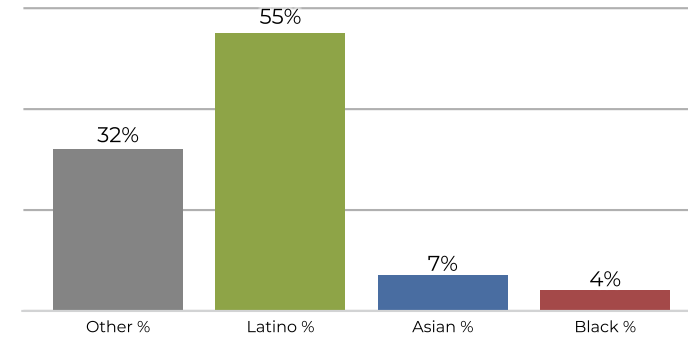
Population	Deviation	Deviation %	Other	Other %	Latino	Latino %	Asian	Asian %	Black	Black %
173,042	3,964	2.3%	103,565	59.8%	49,872	28.8%	17,030	9.8%	2,575	1.5%
Total CVAP	Other CVAP	Other CVAP %	Latino CVAP	Latino CVAP %	Asian CVAP	Asian CVAP %	Black CVAP	Black CVAP %		
124,619	86,594	69.5%	25,777	20.7%	10,364	8.3%	1,885	1.5%		

District 5

2020 Census



Citizen Voting Age Population



Population	Deviation	Deviation %	Other	Other %	Latino	Latino %	Asian	Asian %	Black	Black %
164,240	-4,838	-2.9%	31,894	19.4%	119,436	72.7%	9,498	5.8%	3,412	2.1%
Total CVAP	Other CVAP	Other CVAP %	Latino CVAP	Latino CVAP %	Asian CVAP	Asian CVAP %	Black CVAP	Black CVAP %		
90,520	29,721	32.8%	50,593	55.9%	6,607	7.3%	3,599	4.0%		