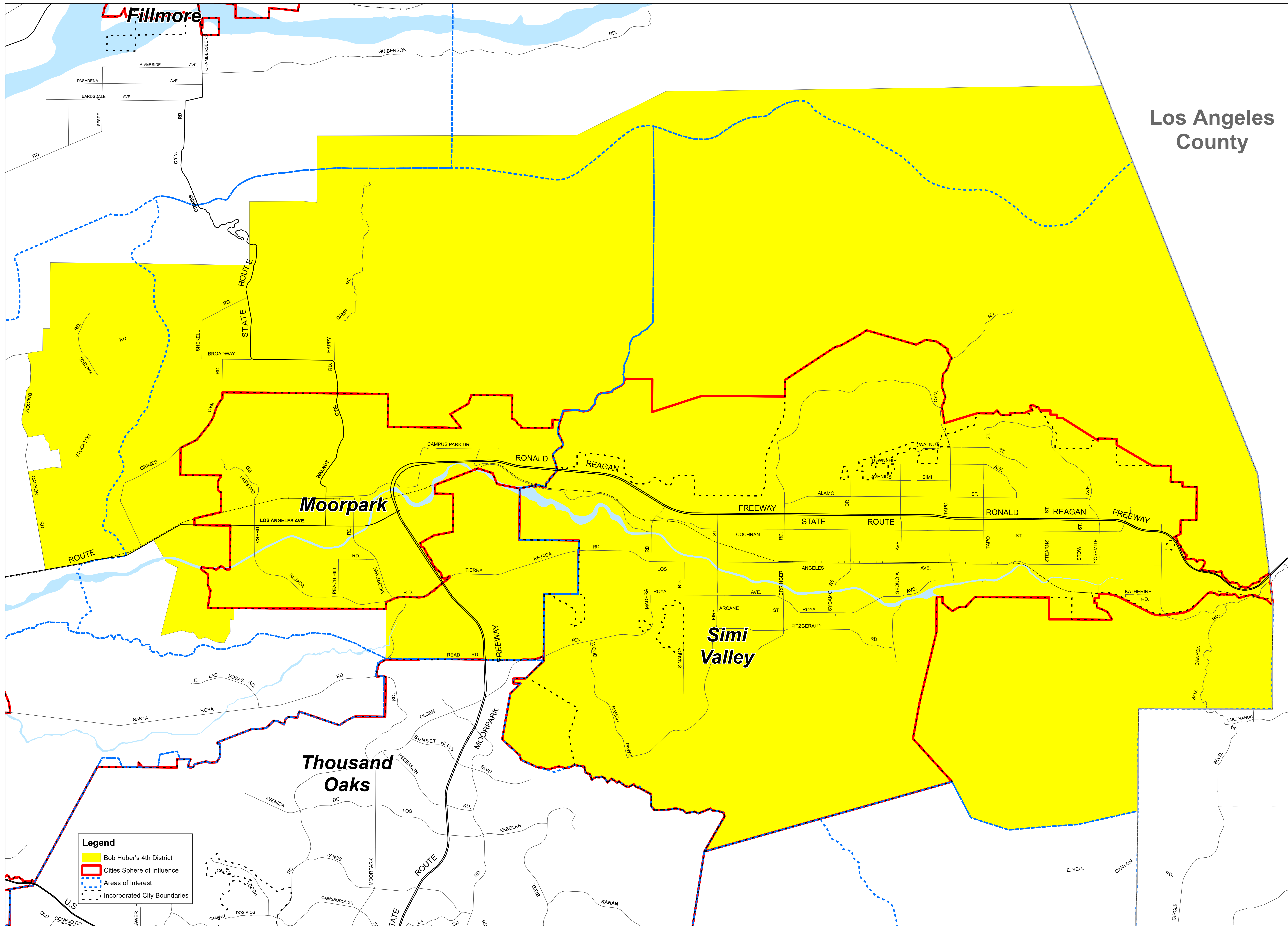


Los Angeles County



**Legend**

- Bob Huber's 4th District
- Cities Sphere of Influence
- Areas of Interest
- Incorporated City Boundaries

**Moorpark**

**Simi Valley**

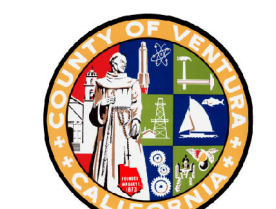
**Thousand Oaks**

**Fillmore**

**Bob Huber**  
**4th Supervisorial District**  
Prepared by County of Ventura - IT Services - GIS Division



Published on: January 4, 2019  
Copyright 2019 County of Ventura. Design, maps, notes and text of this map are copyrighted. It is unlawful to copy or reproduce, either in digital or paper form, any part thereof for personal use or resale.



WARNING: The information contained herein was created by the Ventura County Geographic Information System (GIS), which is designed and operated solely for the convenience of the County and its constituent entities. The County does not warrant the accuracy, reliability, or completeness of the information, and the design, development, or use of any system or application based on the information contained herein is at the user's sole risk.