

# **SOMIS-WWD19 DROUGHT**

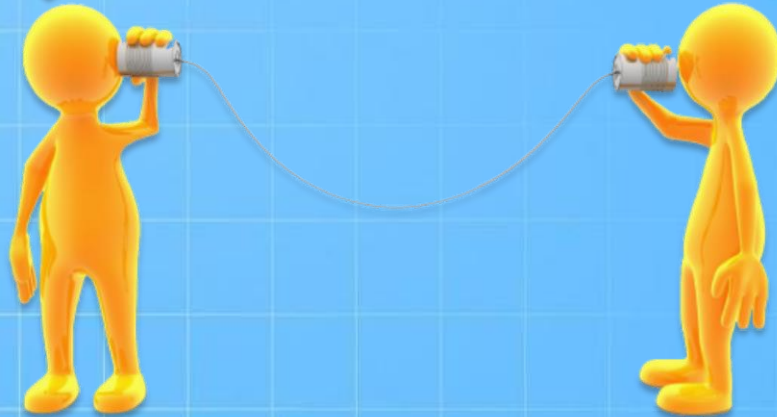
 **411**



**Presented by  
Dave Sasek, Director  
County of Ventura  
Water & Sanitation Department  
July 23, 2015**

**WATER SUPPLIES  
& OUR DISTRICT**

**CALIFORNIA  
DROUGHT**



**HOW DID WE  
GET HERE?**

**WHAT CAN  
WE DO?**



# VENTURA COUNTY'S WATER SUPPLIES



Local Stormwater  
Capture



State Water Project



Recycled  
Wastewater



Groundwater



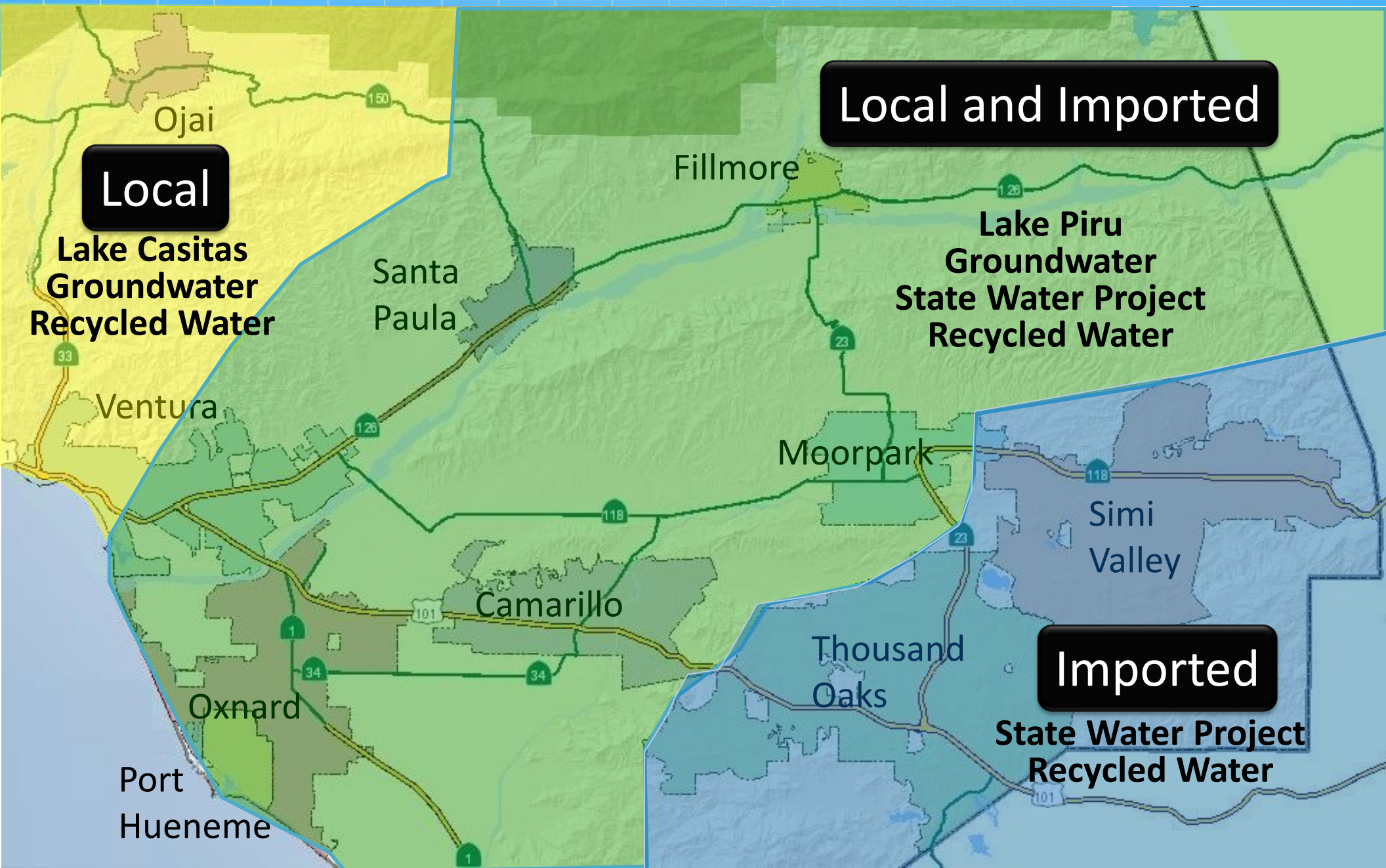


# STATE WATER PROJECT



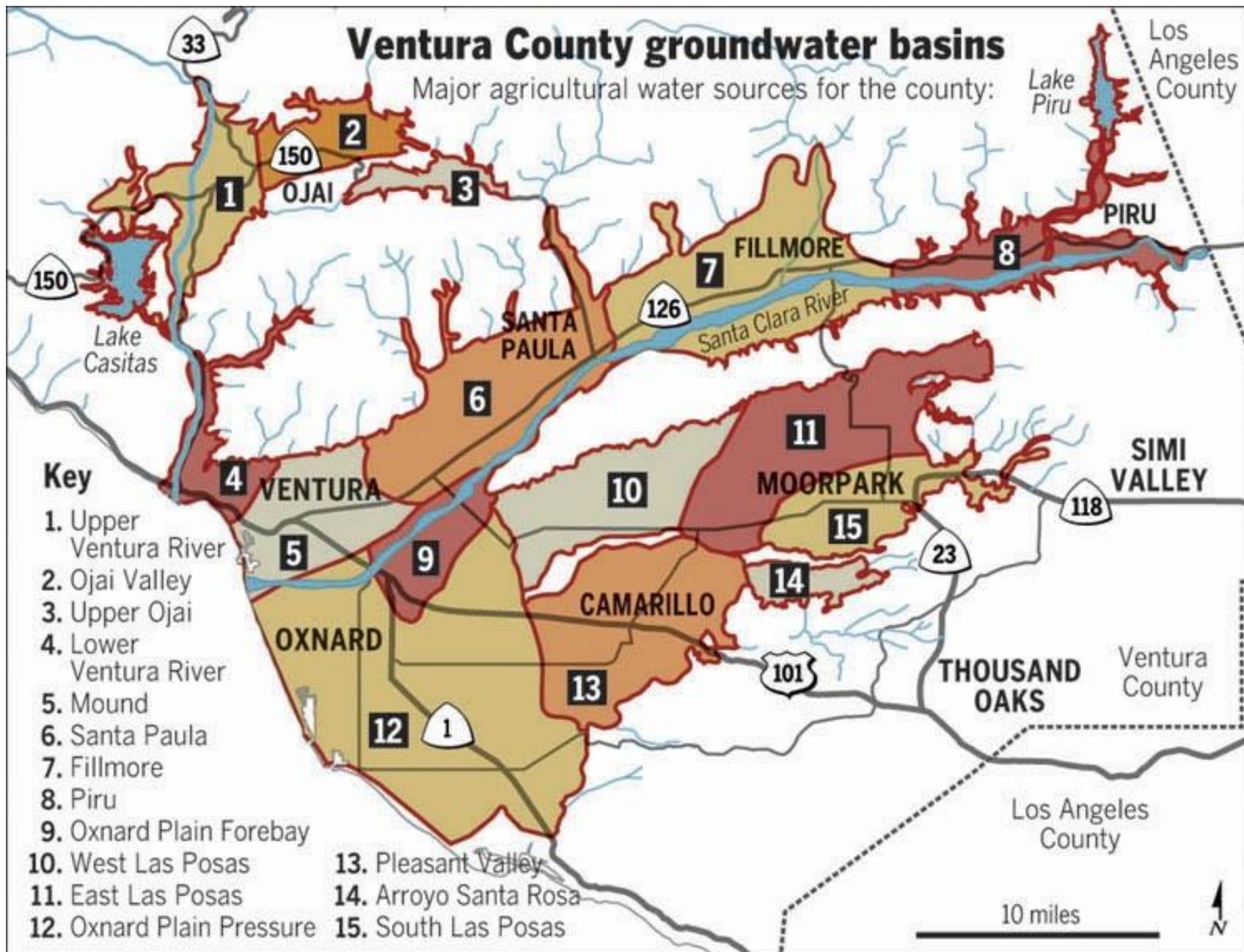


# WATER SUPPLY ORIGIN





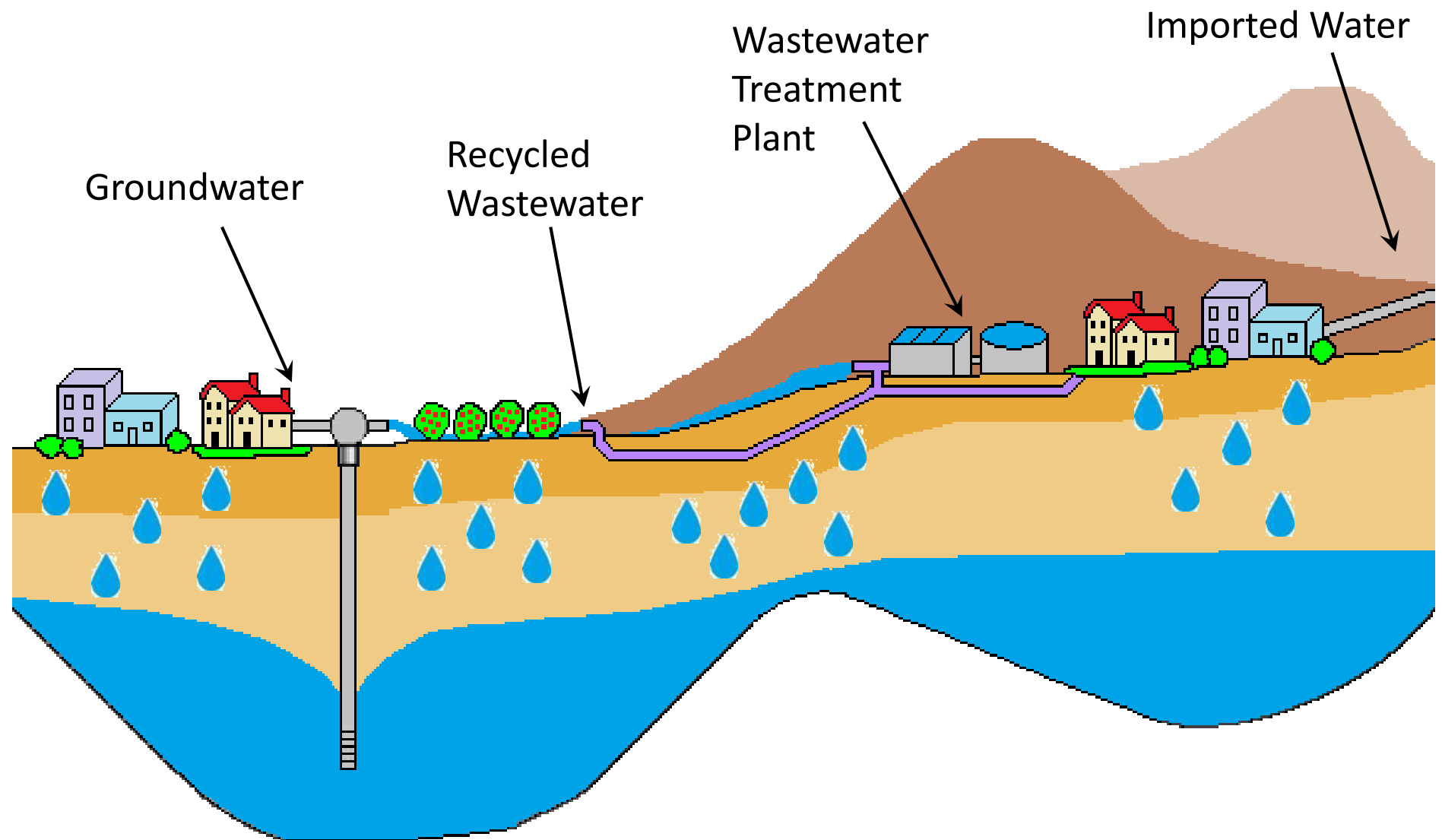
# GROUNDWATER



Source: Ventura County Watershed Protection District



# RECYCLED WATER





# VCWWD-19 HISTORY

- The District provides domestic and agricultural water service to the community of Somis and surrounding areas.
- Ventura County Waterworks District No. 19 was formed in 1981 when it assumed ownership of the Rancho Las Posas Mutual Water Company.
- When the District took over the water system, it was in disrepair, and interruptions in service were frequent.
- The District has worked diligently to reduce service interruptions and to improve water quality.
- The District has high O&M costs related to repairing and keeping an aged water system operational.
- Despite these issues, the District's rates have been historically among the lowest in the County.





# DISTRICT 19 INFRASTRUCTURE



46	Miles of Water Lines (242,880 Feet)
170	Fire Hydrants
538	Valves
8	Reservoirs
7	Booster Pump Stations
17	Pressure Reducing Stations
3	Groundwater Wells
3	Calleguas Turnouts

# WATER QUALITY



*California State Water Project*

- **Imported water** meets all state-mandated water quality requirements including chlorides, iron, and manganese limits.



- **Local groundwater** has elevated iron and manganese levels which cause “**brown water**.” Though not a health hazard, it remains a concern.
- **Local groundwater** has high salts (Well 4=170 ppm) and TDS levels. Even after blending with imported water (86 ppm), they are still higher than suitable levels for many agricultural users (128 ppm).
- **Aged water pipelines** also exacerbate the “brown water” condition.



*Flushing*

- Until wellhead treatment is completed and older water lines are replaced, District 19 has managed water quality by aggressively **flushing** the water distribution system (this has been reduced during the drought).



# DEGRADED/OLD INFRASTRUCTURE



- In 2002 the District prepared a multi-year Infrastructure Improvement Program
- At that time, more than 40% (100,000 linear feet) of the District's water lines were over 50 years old
- In 2002 dollars, replacement of pipeline older than 50 years was estimated to cost \$5.3 million

-In addition to urgent pipeline replacement, the District also requires millions of dollars of additional infrastructure improvements (well treatment, reservoir, new well w/treatment, other lower priority pipelines)



-The District spends on average, 30% of its operating budget on O&M; other water districts spend about 17%.

# What Contributes to High O&M Costs?

- The District has many old, undersized, and flow-restricting water lines that need to be replaced.
- As the pipes continue to age, we are experiencing more water line leaks and failures causing water service interruptions and additional costs for repairs.
- The District averages 12 main-line break repairs per calendar year, at a cost of \$15,000 to \$25,000 per repair. (For comparison VCWWD 1 averages 6 main-line repairs per calendar year)
- Increased cost also include sampling, testing, flushing activities related to system repairs and well maintenance.





# INFRASTRUCTURE IMPROVEMENTS COMPLETED

- Between 2002 and 2014, the district
  - Replaced approximately 5,000 linear feet of water lines,
  - Constructed a 200,000 gallon water tank
  - Built a well with iron and manganese treatment
- In 2014, the District obtained a \$5.0 million low-interest line of credit from the United States Department of Agriculture (USDA) to partially fund the needed infrastructure improvements.
- In 2015, the District completed work valued at \$3.0M:
  - Sand Canyon Pump Station upgrade
  - Replacement of 10,000 linear feet of pipeline
  - Construction of the Balcom Canyon Turnout
  - Construction of Well No. 4 blending station
  - Control instrumentation improvements



**West Alley Before**



**West Alley After**

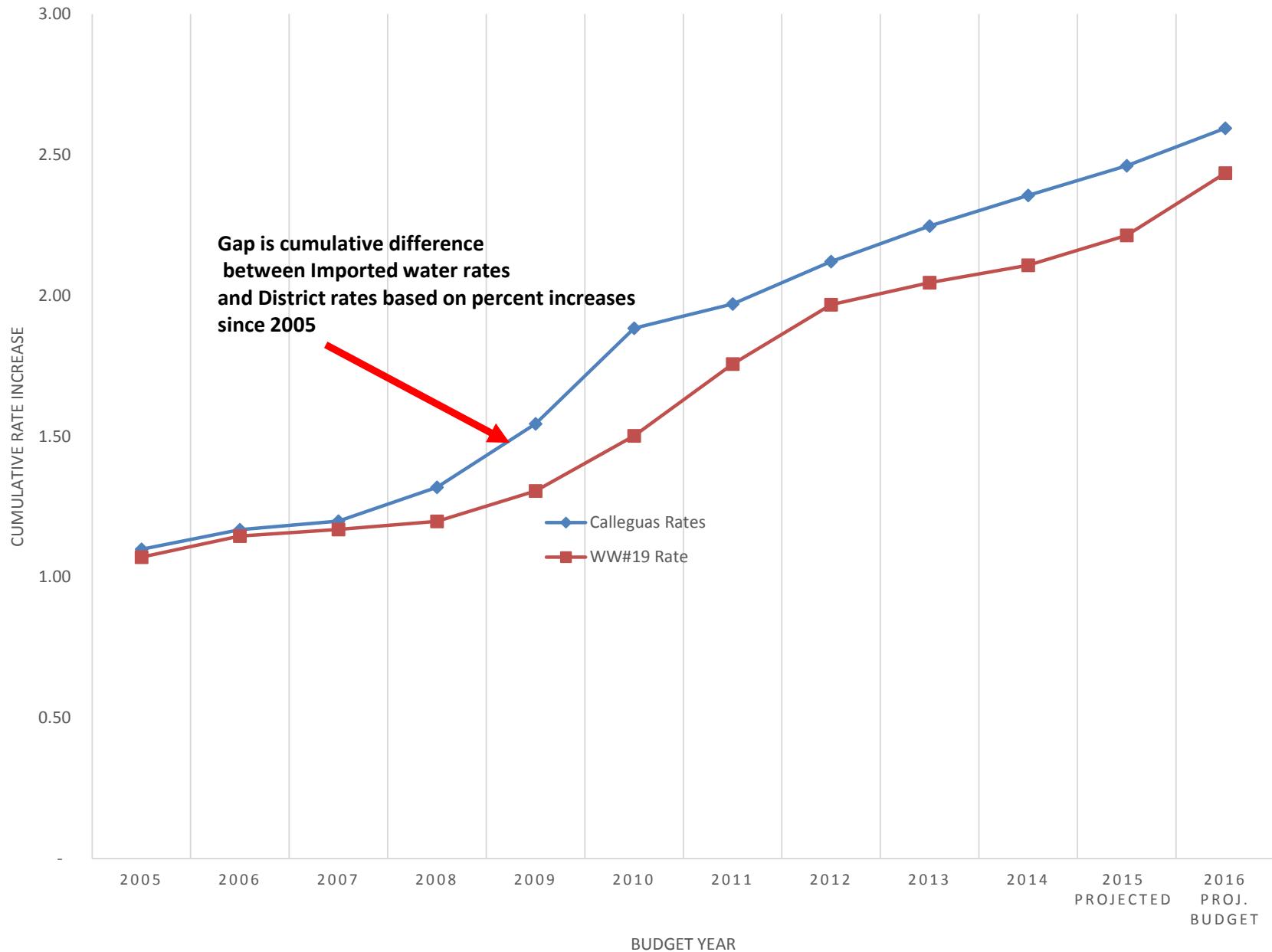
# UNFUNDED VCWWD NO.19 IMPROVEMENT PROJECTS AND COSTS (2015 DOLLARS)

## High Priority Projects

- Well No. 2 Iron and Manganese Treatment Facility (Improve water quality) \$1.6 million
- Replace about 15,000 linear feet of pipelines in Los Angeles Avenue and Somis Road (pipelines are nearly a century old) \$2.7 million
- Replace Pressure Zone 538 Reservoir and transmission water line (existing reservoir and pipeline are old and beyond repair) \$1.7 million
- Construct a new well and Iron and Manganese Treatment Facility (replace existing aging well) \$2.3 million
- Replace 45,500 linear feet of century-old and/or undersized pipelines throughout the District \$6.7 million
- **Total Unfunded High Priority Projects** **\$15.0 million**
- **Total Other Unfunded Projects** **\$24.8M**



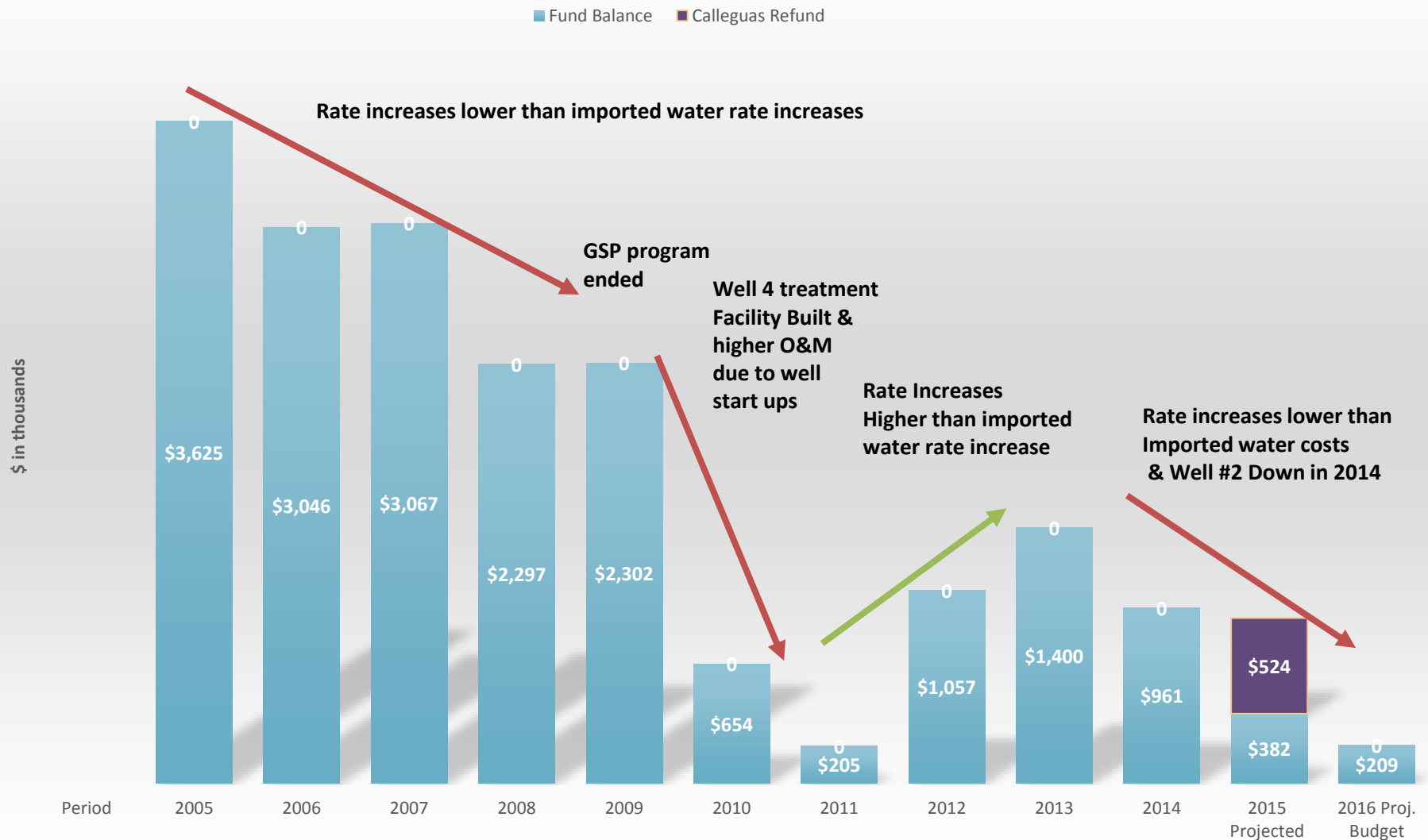
# HISTORIC WATER RATE COMPARISON





# DISTRICT FUND BALANCE HISTORY

## DISTRICT # 19 - SOMIS Ending Fund Balances between Fiscal Years



# **CALIFORNIA DROUGHT**



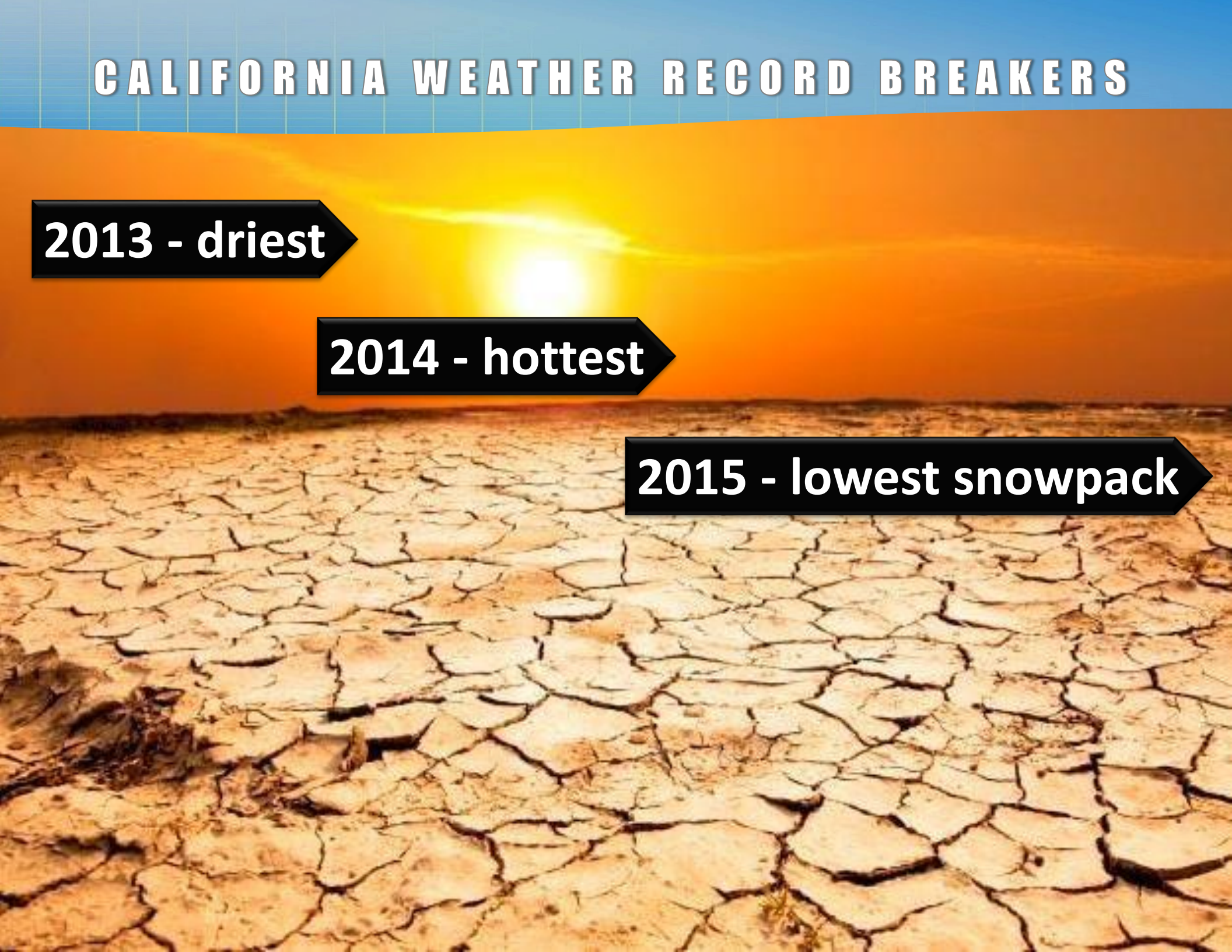


# CALIFORNIA WEATHER RECORD BREAKERS

**2013 - driest**

**2014 - hottest**

**2015 - lowest snowpack**





# LAKE OROVILLE 2011





# LAKE OROVILLE 2014



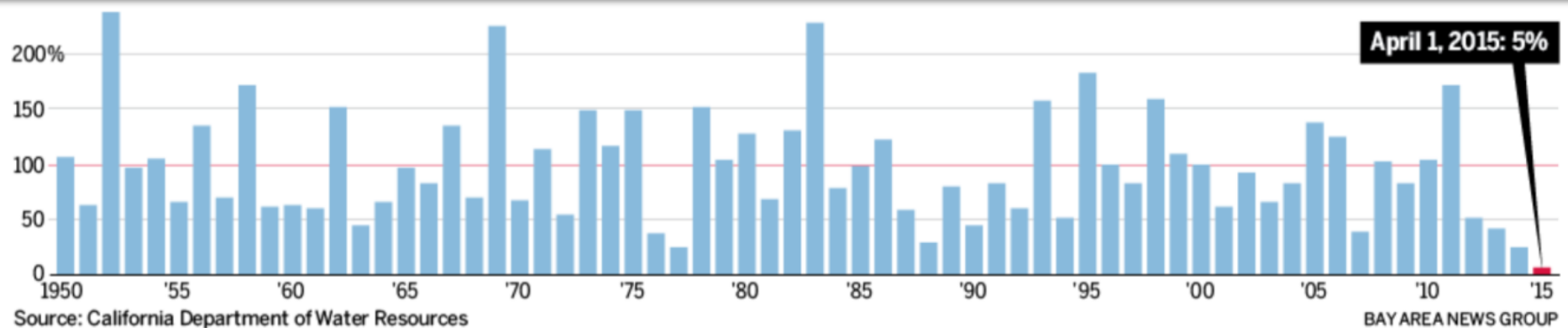


# CALIFORNIA WEATHER RECORD BREAKERS

## Sierra Snowpack Water Content

*“We’re not only setting a new low, we’re completely obliterating the old record.”*

–David Rizzardo, chief of snow surveys  
California Department of Water Resources





# HALF DOME YOSEMITE 2011



# HALF DOME YOSEMITE 2012





# HALF DOME YOSEMITE 2013





# HALF DOME YOSEMITE 2014



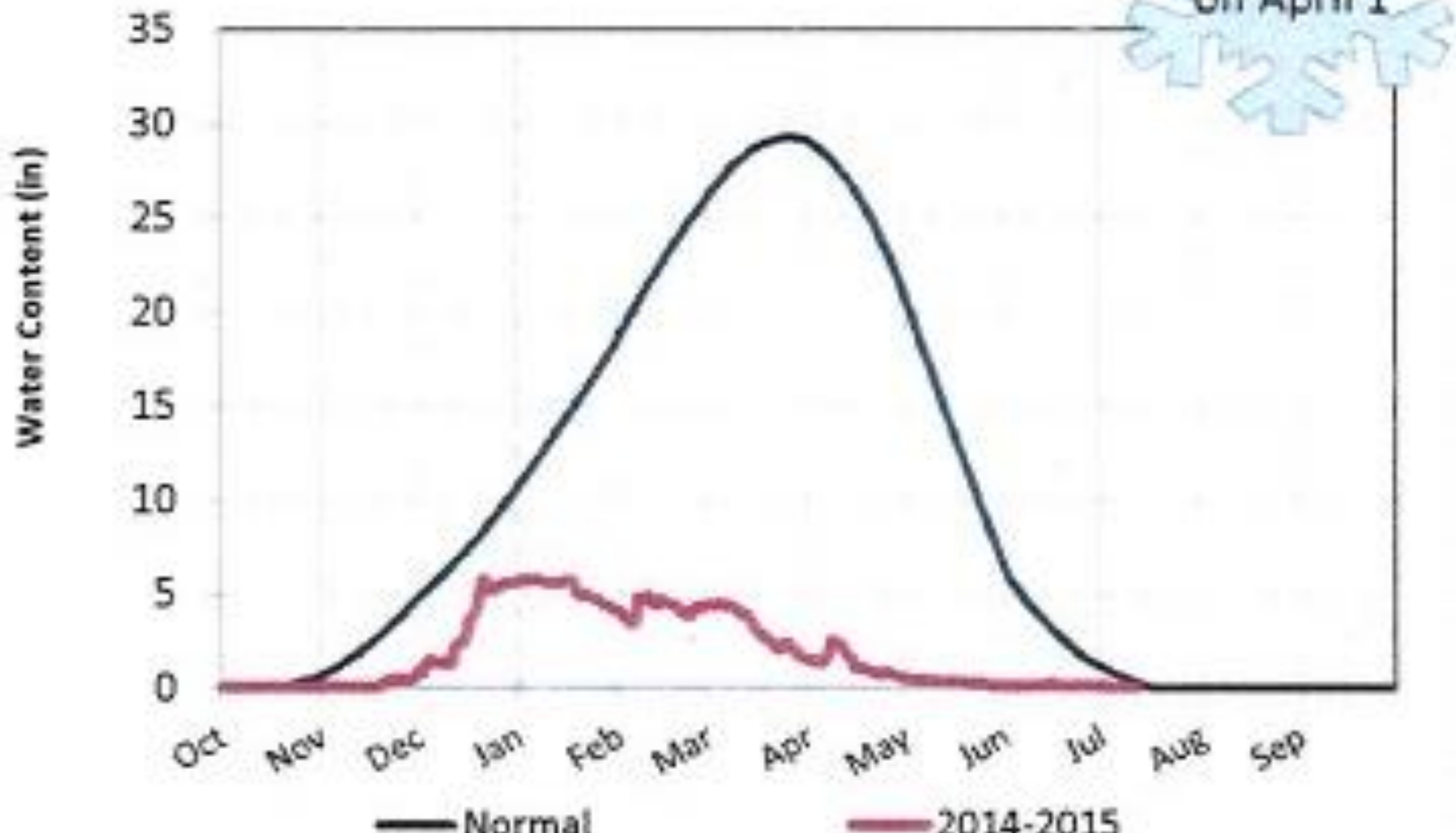


# HALF DOME YOSEMITE 2015



# ***NORTHERN SIERRA SNOWPACK AS OF 7/12/2015***

## Northern Sierra Snowpack





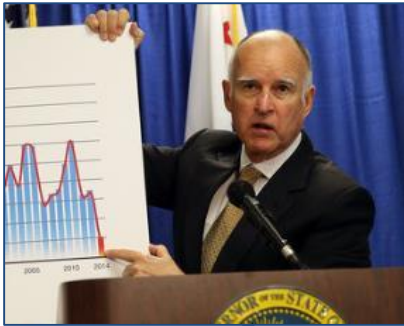
# LAKE MEAD APRIL 2015

Reached lowest level since  
initial fill in the 1930s



# DROUGHT TIMELINE 2014

January – Governor calls for use restrictions & 20% voluntary conservation.



April - Fox Canyon GMA imposes 20% reduction in allowable pumping.



Rest of year - Central Valley farmers fallow land and/or drill deeper wells. Residential wells start to go dry, and water is trucked in for health and safety needs.



January - After 3 dry winters, & pumping restrictions, SWP & CVP at 0% allocations. SWP later adjusts to 5%.

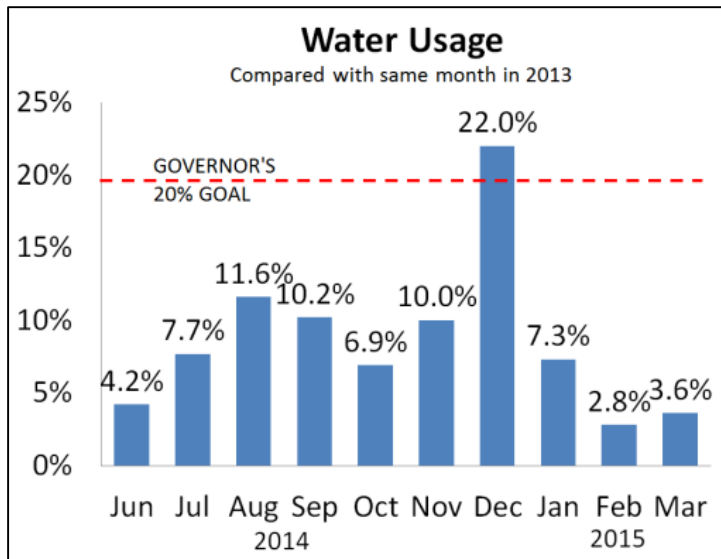


Rest of year - So Cal draws **half of its storage in lakes & aquifers** and invests in turf removal.





# DROUGHT TIMELINE 2015



May 5 – SWRCB adopts requirements for mandatory 25% reduction based on gallons per capita per day (GPCP) water use.

Early in year -  
State has not met Governor's 20% voluntary reduction goal.



April 1 – With lowest snowpack ever, Governor issues Executive Order for mandatory 25% cuts & additional use restrictions.



April 14 – MWD adopts allocations for 15% reduction plus financial surcharges up to 3 times the water rate.

# REGULATIONS TIMELINE

## May 5, 2015 –

- SWRCB adopted an emergency conservation regulation.
- VC BOS declared a Level 2 Water Supply Shortage (\*restricts pool filling, etc.)

## May 21, 2015 –

- The District's Citizens' Advisory Committee unanimously recommended a 25% reduction of all water allocations in all tiers based on the State's conservation mandate to be effective on August 11, 2015.

## May 18, 2015 –

- The provisions of the emergency regulation went into effect. The regulation directs each urban water suppliers to reduce 2015 water production by a set percentage, determined based on 2013 consumption for the period of June through Feb 2013. The District's mandated reduction is 25%.

## June 18, 2015 –

- The District's Citizens' Advisory Committee recommended a 10% water commodity rate increase, effective January 1, 2016, due to increases in the cost of imported water and expected increases in the cost of electricity; the need to enable continued funding of the District's operations and maintenance; and to begin building the resources needed to fund a multi-million dollar backlog of capital projects required for the system to provide safe reliable water to the District.

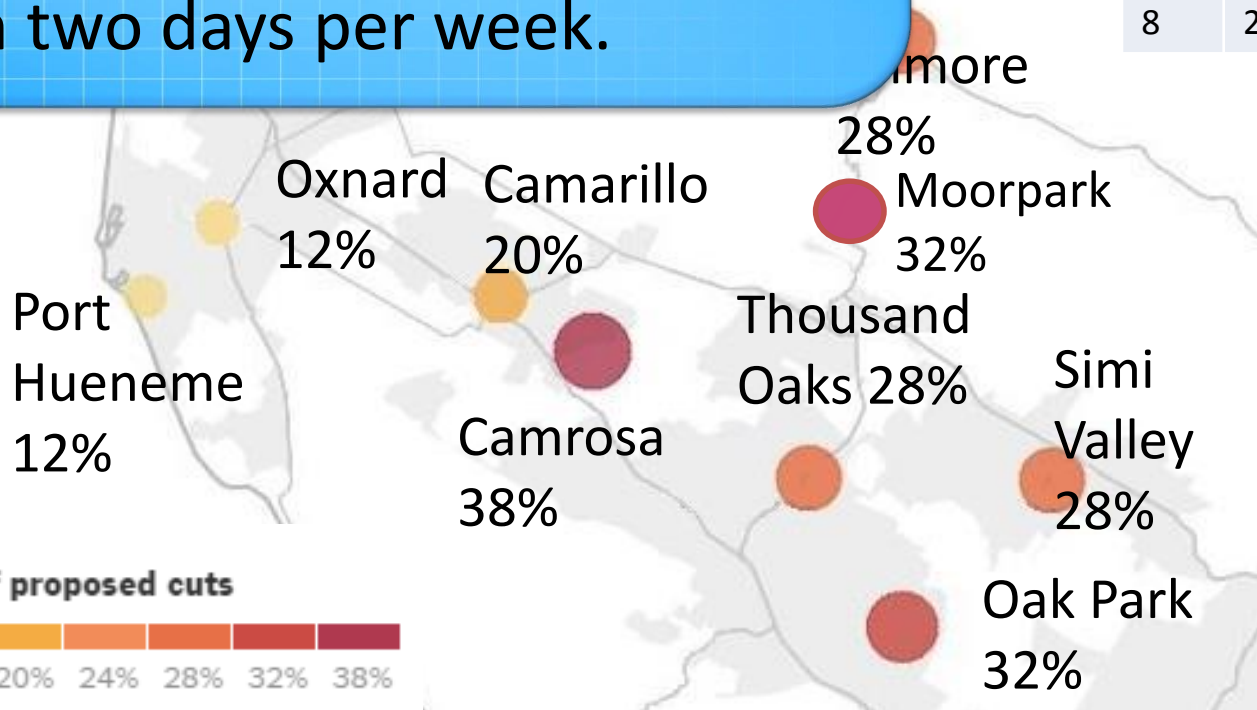




# SWRCB MANDATORY CUTBACKS

Smaller water suppliers are required to achieve a 25% conservation standard or restrict outdoor irrigation to no more than two days per week.

Tier	GPCD	% Reduction
1	<65	8%
2	65 < x < 80	12%
3	80 < x < 95	16%
4	95 < x < 110	20%
5	110 < x < 130	24%
6	130 < x < 170	28%
7	170 < x < 215	32%
8	215 <	36%



# SWRCB MANDATORY USE RESTRICTIONS

- No washing car without nozzle shutoff
- No washing of sidewalks & driveways
- No irrigating turf on public medians
- No runoff when irrigating
- Fountains must recirculate water
- No irrigation 48 hours after rainfall





# SWRCB MANDATORY USE RESTRICTIONS

- New construction must have drip or micro nozzles
- Restaurants must provide water only upon request
- Hotels must provide option of not washing linens





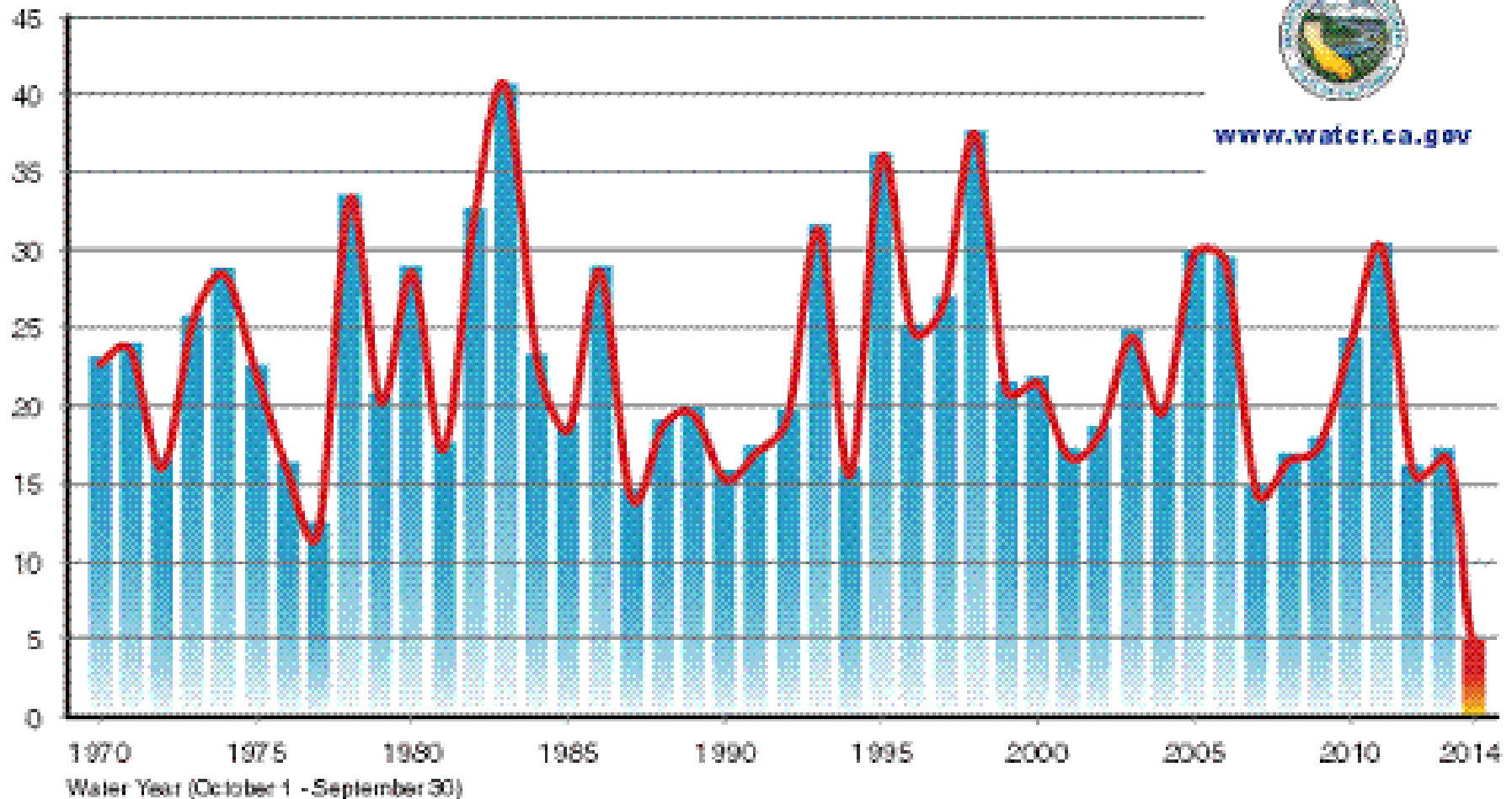
**HOW DID WE  
GET HERE?**



# IT HASN'T RAINED MUCH

## Statewide Average Precipitation - by water year

Average Precipitation (Inches)



**But we have systemic problems which have exacerbated the effects of drought.**

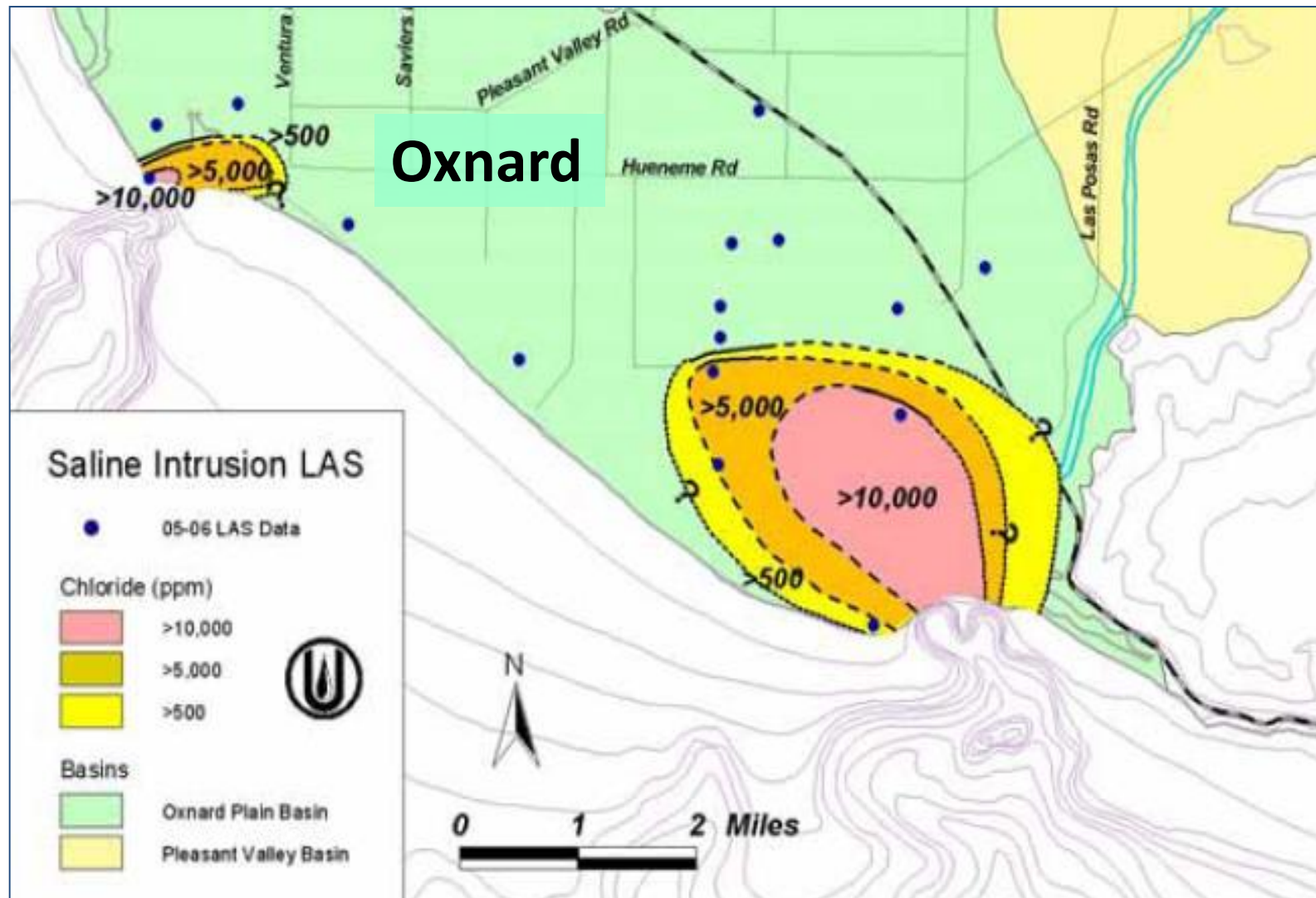
# **DECADES OF DIVERSION FROM WATERWAYS HAVE HARMED THE ENVIRONMENT**

An aerial photograph showing a river system. A large reservoir is visible on the right side, with a dam structure extending from the shore into the water. The river flows from the top left towards the bottom right. The surrounding landscape is dry and brownish, with some green vegetation along the riverbanks. The text is overlaid on a blue banner at the bottom of the image.

**...so now we must divert less water.**



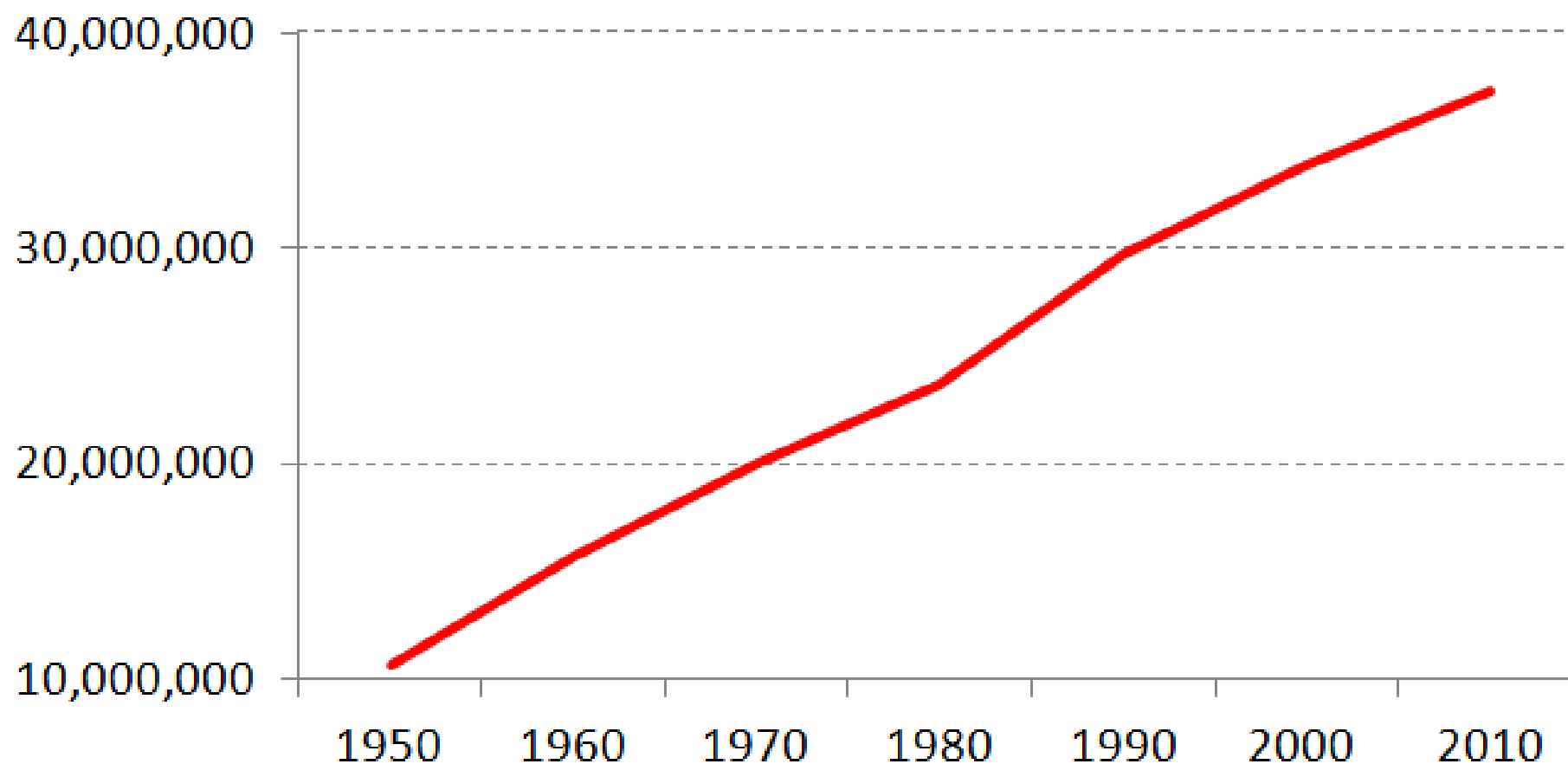
# WE HAVE OVERPUMPED OUR AQUIFERS



...so now we must pump less water.

# CALIFORNIA'S POPULATION HAS INCREASED

**Historical California Population**





# NEVADA AND ARIZONA POPULATIONS HAVE ALSO INCREASED



## Population Growth 2000 to 2010



>5%



>20%

**...so more people  
are competing for a  
finite water supply.**

**WHAT CAN WE DO?**





# WHAT YOU CAN DO TO REDUCE WATER USE

With emergency drought conditions persisting throughout California, the State Water Resources Control Board adopted Emergency Regulations requiring an **immediate 25% reduction** in overall urban potable water use statewide in accordance with Governor Brown's April 1, 2015, Executive Order. (Reductions vary by Waterworks District.)

The County of Ventura Board of Supervisors adopted a resolution on May 5, 2015, declaring a **Level 2 Water Supply Shortage** for Ventura County Waterworks District Nos. 1 (Moorpark), 17 (Bell Canyon), 19 (Somis), and 38 (Lake Sherwood).

**The following are things you can do immediately to cut your water use:**

## Indoor Use

- ◆ *Use washing machines and dishwashers only when full.*
- ◆ *Install an aerator on your kitchen faucet to reduce flow.*
- ◆ *Install low-flow shower heads.*
- ◆ *Shorten your time in the shower.*
- ◆ *Turn your bathroom faucet off when brushing your teeth or shaving.*
- ◆ *Use a bucket to catch water when it is running to warm up, then reuse this water for outdoor irrigation needs.*

## Outdoor Use

- ◆ *Cut your outdoor irrigation in half. Comply with 2 days per week irrigation for landscaping and reduce the number of minutes per station on your irrigation system. (This one action alone will greatly help us achieve our conservation goal.)*
- ◆ *Adjust your sprinklers to ensure only your yard is being watered, not your house, sidewalk, or street.*
- ◆ *Add a layer of mulch around trees and plants to reduce evaporation and keep the soil cool.*
- ◆ *Use a broom instead of a hose to clean driveways, sidewalks, and patios.*
- ◆ *Keep a cover on your pool/spa to prevent evaporation.*
- ◆ *Don't irrigate during rain or within 48 hours following measurable rainfall.*

# WATER USE PROHIBITIONS

## DISTRICT RULES AND REGULATIONS

### PERMANENT WATER CONSERVATION MEASURES COMMERCIAL, INDUSTRIAL, AND GOVERNMENTAL CUSTOMERS

#### ***WATER-WASTE PROHIBITIONS***

- Serving water in restaurants and food service establishments unless water is requested by customer
- Outdoor irrigation between 9 a.m. and 4 p.m.
- Using potable water to wash sidewalks and driveways, except if necessary to eliminate dangers to public health and/or safety
- Operation of ornamental fountain unless water is recirculated
- Operation of a commercial conveyor car wash without the use of a recirculating water system or without a waiver from the District
- Installation of a non-recirculating water system in a new commercial conveyor car wash or a new commercial laundry system



# SOMIS WATERING SCHEDULE

Stage 2 Water Supply Alert

Ventura County Waterworks District No. 19

## Somis Mandatory Outdoor Watering Restrictions

**NO OUTDOOR IRRIGATION BETWEEN 9 A.M. AND 4 P.M.**

### LANDSCAPE WATERING PERMITTED

Wednesday & Saturday for Street Addresses Ending in Even Numbers

Thursday & Sunday for Street Addresses Ending in Odd Numbers

*No watering during or within 48 hours of measurable rainfall*



**SlowYourH<sub>2</sub>O.org**

# CURRENT AND PROPOSED BILLING ADJUSTMENT NUMBER

25% reduction impact

## Domestic BAN Schedule During Peak Demand\*

BAN	Current Tier I	Proposed Tier I	Current Tier II	Proposed Tier II	Current Tier III	Proposed Tier III
1	0-26	0-19.50	27-46	19.51-34.13	>46	>34.13
2	0-39	0-29.25	40-68	29.26-51.19	>68	>51.19
3	0-52	0-39.00	53-91	39.01-68.25	>91	>68.25
4	0-65	0-48.75	66-114	48.76-85.31	>114	>85.31
5	0-78	0-58.50	79-137	58.51-102.38	>137	>102.38
6	0-91	0-68.25	92-159	68.26-119.44	>159	>119.44
7	0-104	0-78.00	105-182	78.01-136.50	>182	>136.50
13	0-182	0-136.50	183-319	136.51-238.88	>319	>238.88
29	0-390	0-292.50	391-683	292.51-511.88	>683	>511.88
59	0-780	0-585.00	781-1365	585.01-1023.75	>1365	>1023.75
119	0-1560	0-1170.00	1561-2730	1170.01-2047.50	>2730	>2047.50

\* Peak demand is May-October

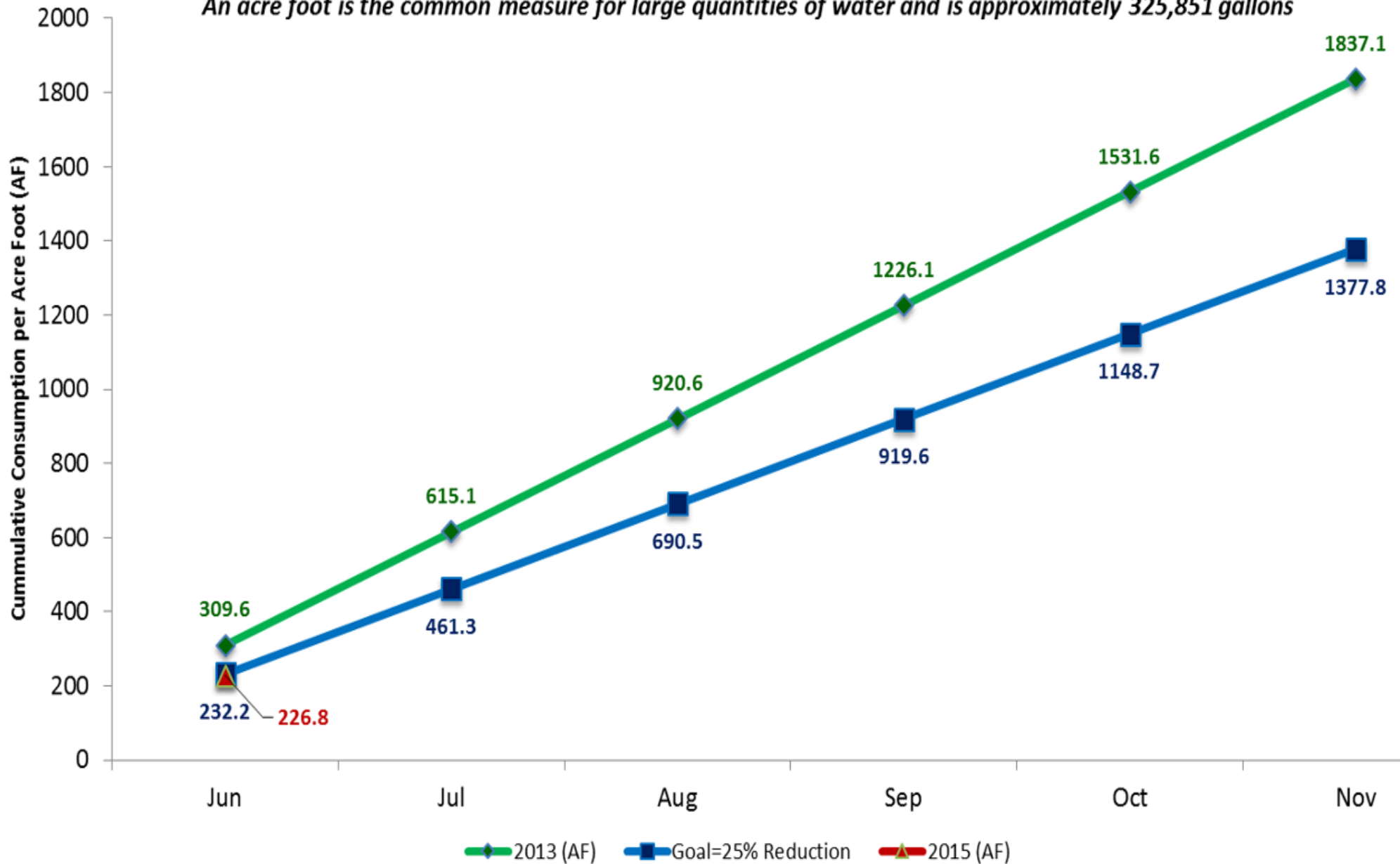
\*\*Tiers are in hundred cubic feet (HCF)/month



# DISTRICT WATER REDUCTION COMPLIANCE TRACKER

## Somis (WWD 19) Water Reduction Tracker

*An acre foot is the common measure for large quantities of water and is approximately 325,851 gallons*



# CURRENT AND PROPOSED RATES

## Municipal and Industrial

Tiers	Current	Proposed 10% Increase January 1, 2016
Tier I	\$2.384/HCF \$1,038.47/AF	\$2.622/HCF \$1,142.14/AF
Tier II	\$3.576/HCF \$1,557.71/AF	\$3.933/HCF \$1,713.21/AF
Tier III	\$5.960/HCF \$2,596.18/AF	\$6.555/HCF \$2,855.36/AF
HCF = Hundred Cubic Feet; AF = Acre Feet		

**A hearing will be held on Tuesday, August 11, 2015, at 11:00 a.m. in the Board of Supervisors' Hearing Room in the Hall of Administration at the Ventura County Government Center, 800 South Victoria Avenue, Ventura, concerning the proposed water allocation reductions and rate increase. At the hearing, any person may be heard regarding the recommended reductions in water allocations and rate increase.**



# CURRENT AND PROPOSED AG RATES

## Agricultural Rates (>5 Acres)

<i>Tiers</i>	<i>Current</i>	<i>Proposed 10% Increase January 1, 2016</i>
Tier I	\$1.870/HCF \$814.57/AF	\$2.057/HCF \$896.03/AF
Tier II	\$2.384/HCF \$1,038.47/AF	\$2.622/HCF \$1,142.14/AF
HCF = Hundred Cubic Feet; AF = Acre Feet		

# Ag <5 Allocations

## Agricultural Allocations (<5 Acres)

Proposed Allocations for Ag <5 acres effective August 11, 2015

Tier I	Tier II	Tier II Surcharge
0-72.69 HCF	72.70-90.04 HCF	> 90.04 HCF



# INITIAL CALLEGUAS MWD SUPPLY ALLOCATIONS-SURCHARGE (5/12/2015)

<i>Date</i>	<i>Action</i>
April 15, 2015	<ul style="list-style-type: none"><li>• Metropolitan approved a Water Supply Allocation Plan</li><li>• Declared a Regional Level 3 Water Shortage</li><li>• Imposed a 15% reduction in wholesales water supply</li><li>• Instituted a surcharge for exceeding the allocation<ul style="list-style-type: none"><li>• \$1,480/AF (up to 15%)</li><li>• \$2,960/AF (in excess of 15%)</li></ul></li></ul>
April 15, 2015	Calleguas Board voted to pass surcharges on to retail water purveyors
June 18, 2015	WWD 19 Citizens' Advisory Committee unanimously voted to support proposal to pass-through surcharges on to individual high water users

# INITIAL CALLEGUAS MWD SUPPLY ALLOCATIONS-SURCHARGE (5/12/2015)

## Allocation Impacts

### Total Available Water Supply

CMWD Allocation	830
Allocation Year Planned Local Supply	<u>1,844</u>
<b>Total Available Water Supply</b>	<b>2,674</b>

### Wholesale Shortage

Allocation Year Imported Water Demand	1,035
CMWD Allocation	<u>830</u>
<b>Percentage reduction in wholesale delivery</b>	<b>19.8%</b>

### Retail Shortage

Allocation Year Retail Water Demand	2,879
Total Water Supply	<u>2,674</u>
<b>Percentage reduction in retail delivery</b>	<b>7.1%</b>

### *Applicable MWD surcharge:*

If 10% over CMWD Allocation	\$122,794
If no reduction from Allocation Year Retail Water Demand	\$422,294



# NON-AG SURCHARGE CALCULATION METHOD

- Started with total available water, imported and groundwater:
  - Imported water available: 830AF/yr (69 AF/mo)
  - Groundwater available: 1844 AF/yr (153.7 AF/mo)
  - Total water available: 2674 AF/yr (222.7 AF/mo)\*

- Totaled monthly allocations for all customers by tier:

	Low Demand**		Peak Demand**	
Tier I	135.3		158	
Tier II	37.9		54.4	
Tier III*	49.5	(0.28 x Tier I+ II)	10.3	(0.05 x Tier I+ II)
Tier III S				
<b>Total*</b>	<b>222.7</b>		<b>222.7</b>	

**Surcharge**

- When water used exceeds the total available water based on summary of allocations, individual customers would be assessed the surcharge.

\* Exceeding this amount would subject district to surcharge (note numbers are rounded for clarity, actual numbers carried to three decimal places)

\*\*Low Demand is Nov-Apr; Peak Demand is May-Oct

# CURRENT AND PROPOSED BILLING ADJUSTMENT NUMBER

25% reduction impact

## Domestic BAN Schedule During Peak Demand\*

BAN	Current Tier I	Proposed Tier I	Current Tier II	Proposed Tier II	Current Tier III	Proposed Tier III	Surcharge Tier Usage
1	0-26	0-19.50	27-46	19.51-34.13	>46	>34.13	≥35.83
2	0-39	0-29.25	40-68	29.26-51.19	>68	>51.19	≥53.75
3	0-52	0-39.00	53-91	39.01-68.25	>91	>68.25	≥71.66
4	0-65	0-48.75	66-114	48.76-85.31	>114	>85.31	≥89.58
5	0-78	0-58.50	79-137	58.51-102.38	>137	>102.38	≥107.49
6	0-91	0-68.25	92-159	68.26-119.44	>159	>119.44	≥125.41
7	0-104	0-78.00	105-182	78.01-136.50	>182	>136.50	≥143.33
13	0-182	0-136.50	183-319	136.51-238.88	>319	>238.88	≥250.82
29	0-390	0-292.50	391-683	292.51-511.88	>683	>511.88	≥537.47
59	0-780	0-585.00	781-1365	585.01-1023.75	>1365	>1023.75	≥1074.94
119	0-1560	0-1170.00	1561-2730	1170.01-2047.50	>2730	>2047.50	≥2149.88

\* Peak demand is May-October

\*\*Tiers are in hundred cubic feet (HCF)/month



# SURCHARGE PROCESS (AG)

- Calleguas wholesale reduction includes AG
- Surcharge will be applied to all AG customers
- District needs to cover possible excessive AG use that would result in District receiving surcharge from Calleguas
- Proposed method AG > 5 Acres:
  - Use 5-year historical average by AG (2009-2013)
  - Usage in excess of 92.9% of annual average would be subject to surcharge (\$3.398/HCF)
  - Usage exceeding this number by more than 15% would be subject to increased surcharge (\$6.795/HCF)
- Proposed method AG < 5 Acres:
  - Surcharge based on average annual usage in 2013
  - Usage in excess of 92.9% of this average would subject to surcharge
- AG customers have received letters with their 5-year historical average

# DISTRICT 19 CONSERVATION EFFORTS

## Currently

- In partnership with the Calleguas Municipal Water District (CMWD), local landscaping companies, and UC Master Gardeners, offered water conservation workshops
- Notified customers regarding drought situation and water use efficiency
- Notified agricultural customers regarding water allocation reductions
- Promoting rebate programs (turf, washers, toilets, etc.)
- Increasing communication with customers through e-mail and social media
- First year to involve District 19 schools in participating in the Metropolitan Water District of Southern California's "Water is Life" Annual Poster Contest

## Upcoming

- Slow Your H<sub>2</sub>O campaign to include website, signage, posters in prominent locations, up-to-date graphs on drought status, conservation tips, and water waste reporting



**SlowYourH<sub>2</sub>O.org**

The logo features the text "SlowYourH<sub>2</sub>O.org" in a bold, dark blue font. The text is partially submerged in a dynamic splash of water, with droplets and ripples visible around the letters, particularly on the right side. The background of the splash is a light gray gradient.



# REBATE INFORMATION

## Visit **bewaterwise.com**<sup>®</sup> For Water Efficiency Upgrade **REBATES**



### Residential Water\$mart Program

Indoor Fixtures	Rebate
High-Efficiency Toilets (Tank-Type)	\$125
High-Efficiency Clothes Washers	\$110

Landscaping Equipment	Rebate
Smart Irrigation Controllers	\$105/Controller for less than one acre \$35/Station for areas larger than one acre
Soil Moisture Sensor Systems	\$80/Controller for less than one acre \$35/Station for areas larger than one acre
Rain Barrels	\$75
Rotating Nozzles for Pop-up Spray Heads	\$4/Nozzle (minimum of 15)

Turf Removal	Rebate
Removal of Irrigated Turf (\$6,000 cap per property / multiple rebates allowed)	\$2/square foot of irrigated turf removed and replaced with drought-tolerant plants or other approved landscape options

### Commercial Water\$mart Program

Plumbing Fixtures	Rebate
High-Efficiency Toilets (Multi-Family)	\$145/Toilet - 1.06 gallons per flush or less \$100/Toilet - 1.28 gallons per flush or less
High-Efficiency Toilets (Flushometer/Tank)	\$100
Ultra-Low and Zero-Water Urinals	\$200
Plumbing Flow Control Valves	\$5/Valve (minimum of 10)

Landscaping Equipment	Rebate
Smart Irrigation Controllers/ Central Computer Irrigation Controllers	\$35/Station
Soil Moisture Sensor Systems	\$35/Irrigation controller station
Rotating Nozzles for Pop-up Spray Heads	\$4/Nozzle (minimum of 15)
Large Rotary Nozzles	\$13/Set (minimum of 8 sets)
In-Stem Flow Regulators	\$1/Regulator (minimum of 25)

Turf Removal	Rebate
Removal of Irrigated Turf (\$25,000 annual cap per property)	\$1/square foot of irrigated turf removed and replaced with drought-tolerant plants or other approved landscape options

Food Equipment	Rebate
Connectionless Food Steamers	\$485/Compartment
Air-Cooled Ice Machines	\$1,000

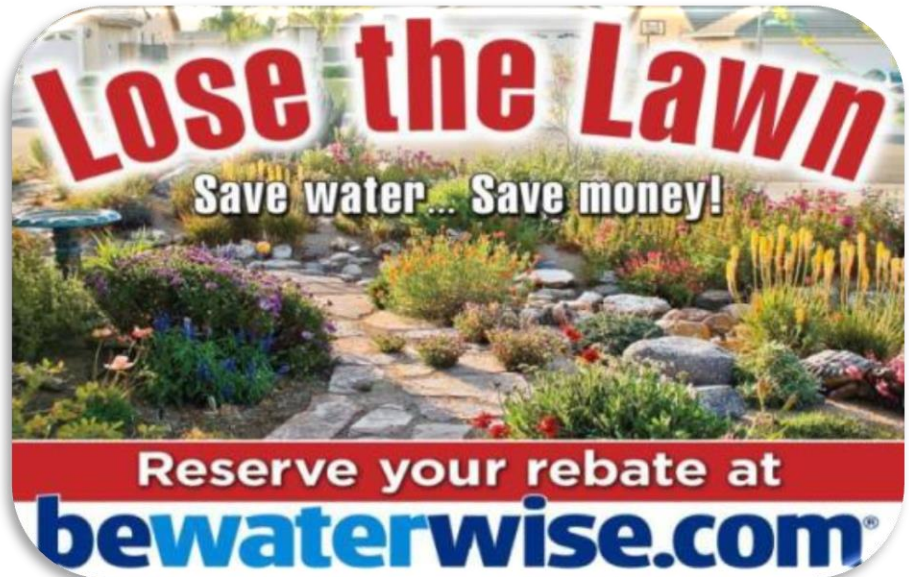
HVAC Equipment	Rebate
Cooling Tower Conductivity Controllers	\$625
Cooling Tower pH Controllers	\$1,750

Medical and Dental Equipment	Rebate
Laminar Flow Restrictors	\$10/Restrictor (minimum of 10)
Dry Vacuum Pumps	\$125/0.5HP (up to 2HP max)



For more information, visit:  
**bewaterwise.com**

\*\*\*\* Rebates are subject to change. Visit [bewaterwise.com](http://bewaterwise.com) for current rebate amounts and program details. \*\*\*\*



New front yard of W&S Dept. Management Assistant who participated in Turf Removal Program.

# TURF REMOVAL PROGRAM

## FUNDS EXHAUSTED

- Turf removal rebates are now only available in some areas. Visit <http://socalwatersmart.com/#> for additional information

RESIDENTIAL

\$2/sf  
Max: \$6k

PUBLIC AGENCY


\$2/sq ft (<3k sf)  
\$1/sq ft (>3k sf)  
Max: \$50k

COMMERCIAL

\$1/sq ft  
Max: \$25k



# CALIFORNIA LEGISLATIVE INFORMATION



## AB-2100

- Prohibits an association from imposing fines or assessment against a member of a separate interest for reducing or eliminating watering of vegetation or lawns during any period for which the Gov. has declared a state of emergency, or a local government has declared a local emergency, due to drought.

## AB-2104

- Provides that a provision of the governing documents or of the architectural or landscaping guidelines or policies shall be void and unenforceable if it contains conditions that have the effect of prohibiting, low water-using plants as a replacement of existing turf.

## AB-349

(Proposed)

- Further narrows the ability of an HOA to restrict “low water-using plants,” an area where associations are already very limited. It would void any provision of the governing documents of HOA guidelines that prohibit the use of low water-using landscapes that require “not more than a specified amount of water”, including artificial turf.

## SB-992

- Prohibits an association from imposing fines or assessment on separate interest owners for yard maintenance issues related to under-watered plants and reducing or eliminating watering of vegetation or lawns during any period for which the Gov. declared a state of emergency due to drought.



For details on the legislative bills, visit [http://leginfo.legislature.ca.gov/faces/billNavClient.xhtml?bill\\_id=201520160AB349](http://leginfo.legislature.ca.gov/faces/billNavClient.xhtml?bill_id=201520160AB349)



 **STAY TUNED...**

“Slow Your H<sub>2</sub>O” campaign”

<http://www.slowyourh2o.org/>

VCWWD’s microsite-coming soon

 <https://www.facebook.com/VCPWA>

 <https://twitter.com/vcppublicworks>

<http://www.vcwatershed.net/fws/gmap.html>



# SLOW YOUR H<sub>2</sub>O CAMPAIGN

# SOMIS

Ventura County Waterworks District 19



OUR DISTRICTS

WATER WISE TIPS AND REGULATIONS

FACTS

REPORT WATER WASTE

## FROM THE COUNTY OF VENTURA WATER AND SANITATION DEPARTMENT **NOTICE OF LEVEL 2 WATER SUPPLY SHORTAGE**

### VENTURA COUNTY WATERWORKS DISTRICTS

NOS. 1 (Moorpark), 17 (Bell Canyon), 19 (Somis) and 38 (Lake Sherwood)

On May 1, 2015, the Ventura County Board of Supervisors declared a Level 2 Water Supply Shortage.

Please review mandatory conservation information regarding your Waterworks District.

With emergency drought conditions persisting throughout California, the State Water Resources Control Board adopted Emergency Regulations requiring an **IMMEDIATE 25% REDUCTION** in overall urban potable water use statewide in accordance with Governor Edmund G. Brown's April 1, 2015, Executive Order. *Reductions vary by Waterworks District.*

**Please be aware outdoor irrigation is NOT permitted during and 48 hours following measurable rainfall.**

[LEARN MORE](#)



# SLOW YOUR H<sub>2</sub>O CAMPAIGN

## SOMIS CALIFORNIA

To our Somis customers, in order to meet State mandates and to avoid potential surcharges from the Calleguas Municipal Water District (the District's water wholesaler) we are required to reduce overall overall water use by 25% in accordance with Governor Edmund G. Brown's April 1, 2015, Executive Order. *Keep up with the District's water saving progress and water source levels below:*

[CLICK HERE](#)

TO REVIEW THE COMPLETE SET OF RULES AND REGULATIONS FOR WATERWORKS DISTRICT NO.19 - SOMIS

[CLICK HERE](#)

TO REVIEW THE NOTICE OF PROPOSED WATER ALLOCATION REDUCTIONS AND RATE INCREASE FOR SOMIS

## HELP US SLOW OUR H<sub>2</sub>O BY 25%



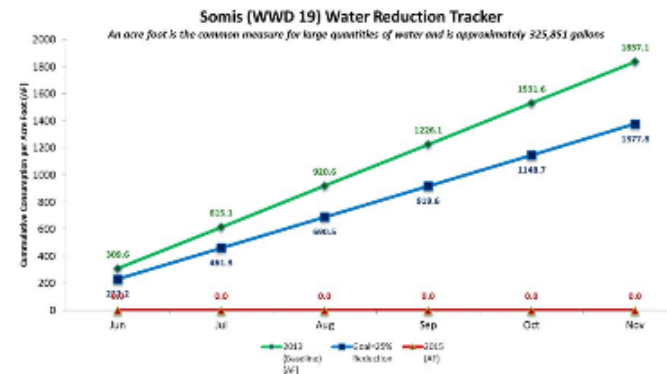
LOCAL WATER SUPPLY  
IMPORTED WATER SUPPLY

[CLICK HERE](#)

TO READ THE WATER QUALITY REPORT FOR WATERWORKS DISTRICT NO.19 - SOMIS

## HOW IS SOMIS DOING?

To monitor the progress being made in meeting the District's water reduction goal, staff is tracking water use and comparing it to the usage in 2013 and to what it should be to meet the 25% reduction goal.





# SLOW YOUR H<sub>2</sub>O CAMPAIGN

## SlowYourH<sub>2</sub>O.org

### REPORT WATER WASTE

Please use the form below to report water conservation incidents or issues.

Date of Incident (required)

Time of Incident

Location (required)

Nature of Incident (required)

Additional Comments

Name (required)

Phone

Email (required)

Submit »

### WATER AND SANITATION DEPARTMENT

For questions regarding these Rules and Regulations, please call or visit our office.

Phone: (805) 378-3000

Address: 6767 Spring Rd. Moorpark, CA 93021

**FOR MORE INFORMATION**



**Call the County of Ventura  
Water and Sanitation Department  
at 805-378-3000**

or visit our website at

<http://pwa.ventura.org/water-sanitation-department/water-and-sanitation-services>



<https://www.facebook.com/VCPWA>