



Santa Rosa Valley Municipal Advisory Council
Rosemary Allison, Mark Burley, Kevin Cannon, Amy Elliott, Michael Adams

October 12, 2021

Chair Linda Parks
Ventura County Board of Supervisors
800 S. Victoria Avenue
Ventura, California 93003

Dear Chair Parks and Board:

As your Board considers the new Census data and redistricting options for Ventura County, the Santa Rosa Valley Municipal Advisory Council (MAC) strongly recommends that our community of Santa Rosa Valley, as represented by the MAC boundaries approved by the Board on November 6, 2012 (attached), remain in its entirety and within the Second Supervisorial District. Santa Rosa Valley is a community with like needs with its adjoining neighbor to the east, the City of Thousand Oaks, in terms of transportation connectivity, municipal facilities, recreation and open space.

Many areas of Santa Rosa Valley are contiguous with Thousand Oaks and the City owns land at the entrances of Moorpark Road and at Hill Canyon Road. The Norwegian Grade section of Moorpark Road is owned by the City right up to the intersection at Santa Rosa Road and serves as the main entrance into Santa Rosa Valley from Thousand Oaks. Additionally, the City's Hill Canyon Treatment Plant is only accessed through Santa Rosa Valley.

The southern boundary of Santa Rosa Valley is Wildwood Park and Hill Canyon, which is managed by the Conejo Open Space Conservation Agency (COSCA), a Joint Powers Authority with the City of Thousand Oaks and the Conejo Recreation (CRPD). Santa Rosa Valley and COSCA share open space areas, hiking, biking and equestrian trails, as well as a parking agreement with the County Parks Department that allows for free parking at the County's Santa Rosa Valley Regional Park. The City also owns agricultural land in Santa Rosa Valley and has authorized the use of a trail along that land so people can easily connect to the park.

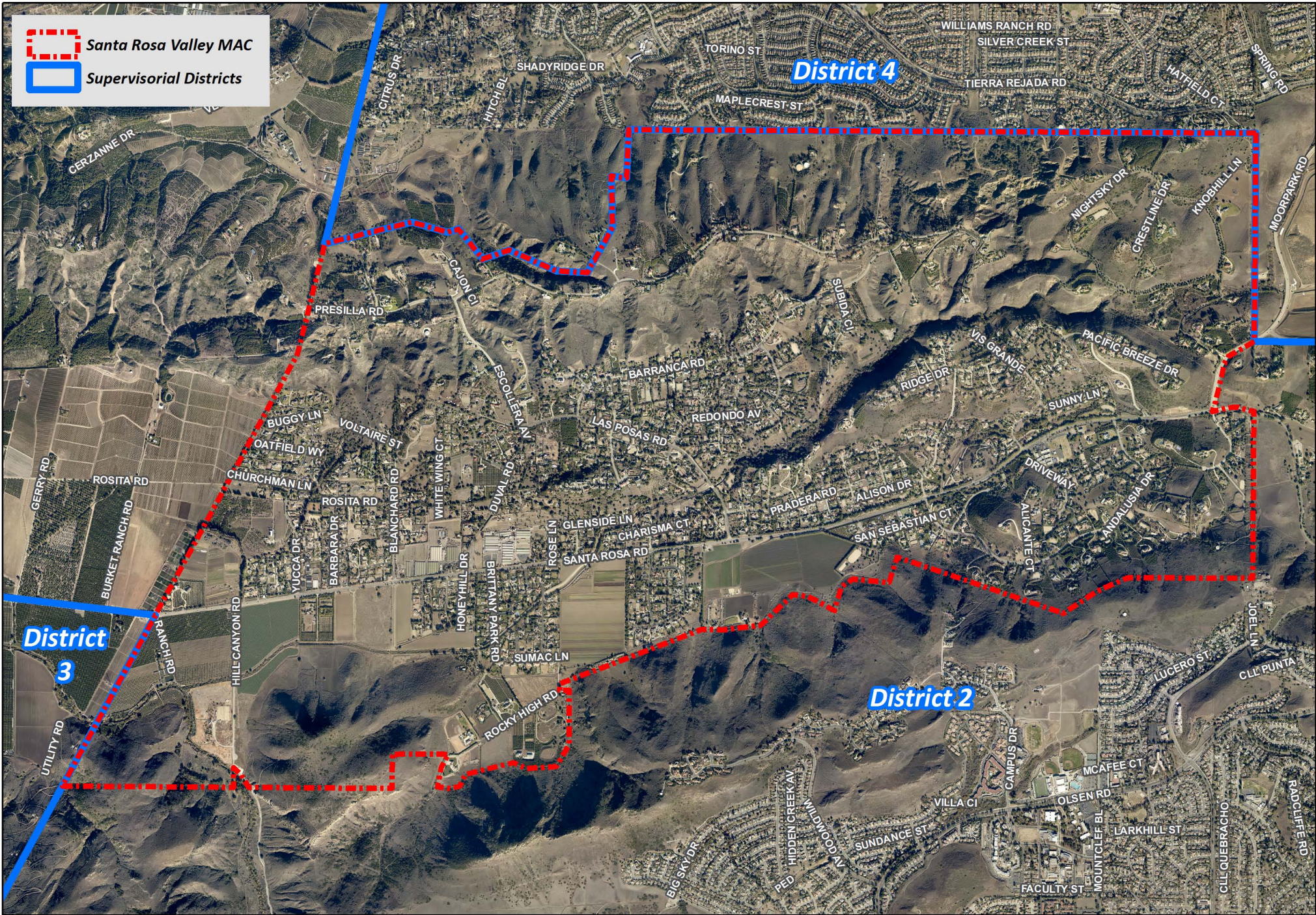
In sum, both Santa Rosa Valley and the City of Thousand Oaks have key facilities accessed through each other's jurisdictions, have important shared agreements for trails and parking, and are geographically linked by a common recreational area. On September 16, 2021, the MAC unanimously voted to send a recommendation to your Board respectfully asking that as you work toward drawing new Supervisorial districts for Ventura County, you maintain the integrity of Santa Rosa Valley and allow our community to remain in District 2.

Cordially,

A handwritten signature in black ink, appearing to read "Rosemary Allison".

Rosemary Allison, Chair
Santa Rosa Valley Municipal Advisory Council

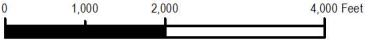
 Santa Rosa Valley MAC
 Supervisorial Districts



Ventura County
 Resource Management Agency
 Information Systems GIS Services
 Map created on 06/24/2016
 Source: Pictometry®, February 2016



County of Ventura Santa Rosa Valley MAC & Supervisorial Districts



Disclaimer: this map was created by the Ventura County Resource Management Agency Information Systems GIS, which is designed and operated solely for the convenience of the County and related public agencies. The County does not warrant the accuracy of this map and no decision involving a risk of economic loss or physical injury should be made in reliance therein

