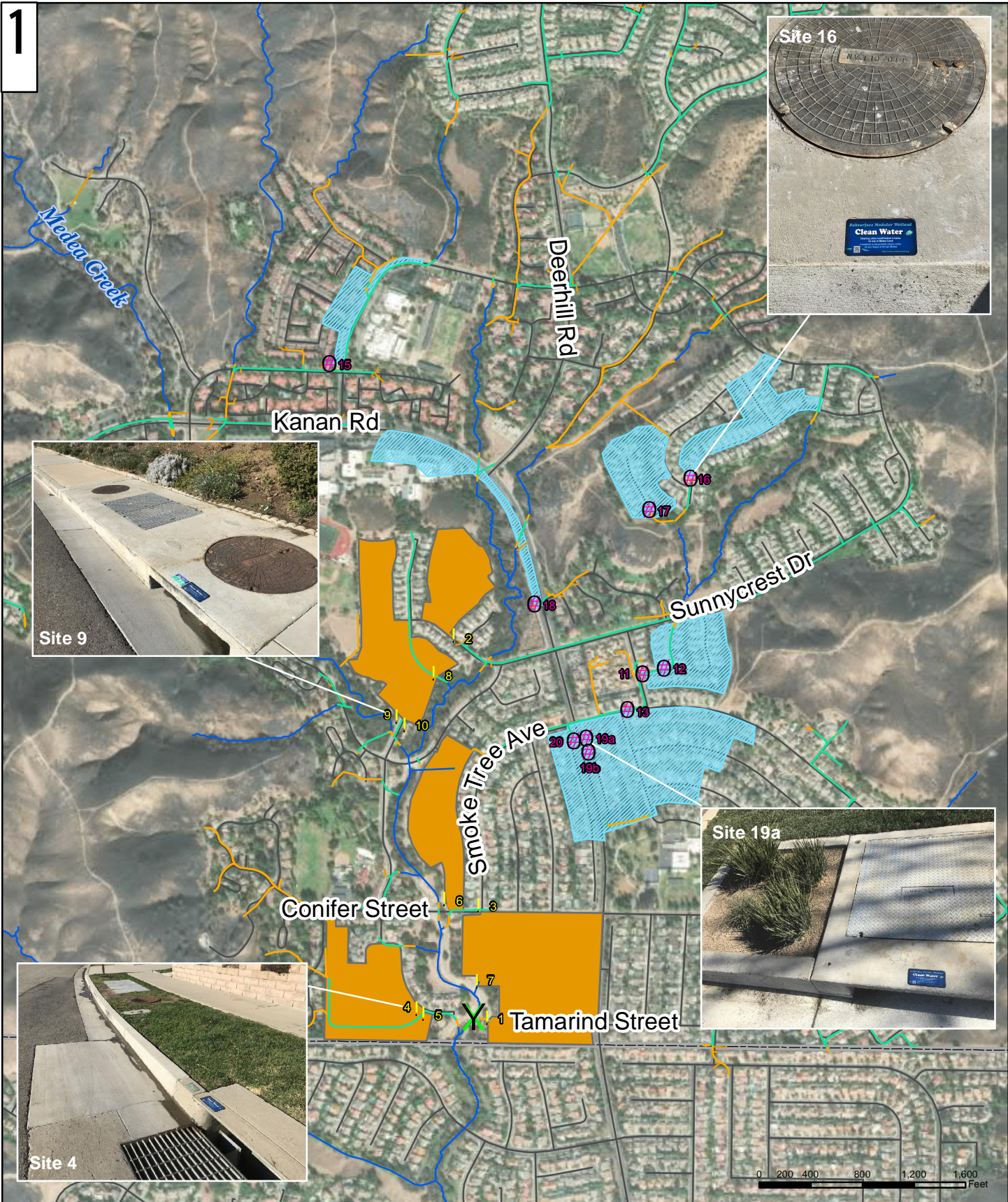


1



**PUBLIC**  
**VENTURA COUNTY**  
**WORKS**

- Modular Wetlands:
- ! Phase I Units 1-10
  - ⊗ Phase II Units 11-13, 15-18, 19A, 19B, 20
  - Phase I Treatment Area (63 Acres)
  - ▨ Phase II Treatment Area (51 Acres)

- X Monitoring Location MCW-12
- Private Storm Drain
- County Storm Drain
- Roads
- County Line

**OAK PARK GREEN STREETS  
 URBAN RETROFIT  
 PHASE I & PHASE II**  
 Medea Creek Tributary to Malibu Creek

<b>SITE 1</b>	
Road =	Tamarind Street Cul-De-Sac
Cross Street =	Locust Avenue
Location =	In Street
Modular Wetland =	MWS-L-8-16-V-UG
Pre-Treat Cartridges =	4
Est. Removal/Cleaning =	13.5 CF
Trough in Catch Basin =	Yes
Access = (hex-bolted)	(2) 24"x42" Hatches <b>(2) 30" ø MH (O&amp;M Main)</b> (1) 24" ø MH



<b>SITE 2</b>	
Road =	Sunnycrest Drive
Cross Street =	Countryside Road
Location =	In Street
Modular Wetland =	MWS-L-4-17-V-UG
Pre-Treat Cartridges =	2
Est. Removal/Cleaning =	5.3 CF
Trough in Catch Basin =	Yes
Access = (hex-bolted)	(1) 24"x42" Hatches (1) 30" ø MH <b>(1) 24" ø MH (O&amp;M Main)</b>



<b>SITE 3</b>	
Road =	Conifer Street
Cross Street =	Smoke Tree Avenue
Location =	In Sidewalk
Modular Wetland =	MWS-L-4-13-V-UG
Pre-Treat Cartridges =	1.5
Est. Removal/Cleaning =	5.3 CF
Trough in Catch Basin =	Yes
Access = (hex-bolted)	(1) 30"x48" Hatch <b>(1) 30" ø MH (O&amp;M Main)</b> (1) 24" ø MH



<b>SITE 4</b>	
Road =	Sunny Vista Avenue (N Side)
Cross Street =	Medea Creek Lane
Location =	In Grass Parkway
Modular Wetland =	MWS-L-4-21-V-UG
Pre-Treat Cartridges =	2
Est. Removal/Cleaning =	5.3 CF
Trough in Catch Basin =	Yes
Access = (hex-bolted)	(2) 30"x48" Hatches <b>(1) 30" ø MH (O&amp;M Main)</b> (1) 24" ø MH



<b>SITE 5</b>	
Road =	Sunny Vista Avenue (S Side)
Cross Street =	Medea Creek Lane
Location =	In Grass Parkway
Modular Wetland =	MWS-L-4-8-G-UG
Pre-Treat Cartridges =	1
Est. Removal/Cleaning =	3.2   CF
Trough in Catch Basin =	Yes
Access = (hex-bolted)	(1) 36"x36" Hatch <b>(1) 30" ø MH (O&amp;M Main)</b>



<b>SITE 6</b>	
Road =	Parkview Drive
Cross Street =	Conifer Street
Location =	In Sidewalk w/ Curb Opening
Modular Wetland =	MWS-L-4-8-G-UG
Pre-Treat Cartridges =	1
Est. Removal/Cleaning =	3.2   CF
Trough in Catch Basin =	No
Access = (hex-bolted)	<b>(1) 36"x36" Hatch (O&amp;M Main)</b> (1) 30" ø MH



<b>SITE 7</b>	
Road =	Smoke Tree Avenue Cul-De-Sac
Cross Street =	Conifer Street
Location =	In Sidewalk w/ Curb Opening
Modular Wetland =	MWS-L-4-8-G-UG
Pre-Treat Cartridges =	1
Est. Removal/Cleaning =	3.2   CF
Trough in Catch Basin =	No
Access = (hex-bolted)	<b>(1) 36"x36" Hatch (O&amp;M Main)</b> (1) 30" ø MH



<b>SITE 8</b>	
Road =	Southridge Drive Cul-De-Sac
Cross Street =	Sunnycrest Drive
Location =	In Street
Modular Wetland =	MWS-L-4-8-G-UG
Pre-Treat Cartridges =	1
Est. Removal/Cleaning =	3.2   CF
Trough in Catch Basin =	Yes
Access = (hex-bolted)	<b>(1) 36"x36" Hatch (O&amp;M Main)</b> (1) 30" ø MH



<b>SITE 9</b>	
Road =	Medea Creek Lane (W Side)
Cross Street =	Oak Hills Drive
Location =	In Sidewalk w/ Curb Opening
Modular Wetland =	MWS-L-4-13-C-UG
Pre-Treat Cartridges =	1.5
Est. Removal/Cleaning =	5.3 CF
Trough in Catch Basin =	No
Access = (hex-bolted)	(1) 30"x48" Hatch <b>(1) 30" ø MH (Primary for O&amp;M)</b> (1) 24" ø MH



<b>SITE 10</b>	
Road =	Medea Creek Lane (E Side)
Cross Street =	Oak Hills Drive
Location =	In Sidewalk w/ Curb Opening
Modular Wetland =	MWS-L-4-15-V-UG
Pre-Treat Cartridges =	2
Est. Removal/Cleaning =	5.3 CF
Trough in Catch Basin =	No
Access = (hex-bolted)	(1) 30"x48" Hatch <b>(1) 30" ø MH (Primary for O&amp;M)</b> (1) 24" ø MH



<b>SITE 11</b>	
Road =	Twin Springs Avenue
Cross Street =	Sprucewood Avenue
Location =	In Sidewalk
Modular Wetland =	MWS-L-4-8-C-UG
Pre-Treat Cartridges =	1
Est. Removal/Cleaning =	3.3   CF
Trough in Catch Basin =	<b>No</b>
Access = (hex-bolted)	(1) 36"x36" Hatches <b>(1) 30" ø MH (O&amp;M Main)</b>



<b>SITE 12</b>	
Road =	Twin Springs Avenue
Cross Street =	Alder Springs Drive
Location =	In Sidewalk
Modular Wetland =	MWS-L-4-8-V-UG
Pre-Treat Cartridges =	1
Est. Removal/Cleaning =	3.3   CF
Trough in Catch Basin =	<b>Yes</b>
Access = (hex-bolted)	(1) 36"x36" Hatches <b>(1) 30" ø MH (O&amp;M Main)</b>



<b>SITE 13</b>	
Road =	Smoke Tree Avenue
Cross Street =	Satinwood Avenue
Location =	In Street
Modular Wetland =	MWS-L-4-8-V-UG
Pre-Treat Cartridges =	1
Est. Removal/Cleaning =	3.3   CF
Trough in Catch Basin =	<b>Yes</b>
Access = (hex-bolted)	(1) 36"x36" Hatches <b>(1) 30" ø MH (O&amp;M Main)</b>



<b>SITE 15</b>	
Road =	Hollytree Drive
Cross Street =	Doubletree Road
Location =	In Sidewalk
Modular Wetland =	MWS-L-4-8-V-UG
Pre-Treat Cartridges =	1
Est. Removal/Cleaning =	3.3   CF
Trough in Catch Basin =	<b>No</b>
Access = (hex-bolted)	(1) 30"x48" Hatches <b>(1) 30" ø MH (O&amp;M Main)</b>



<b>SITE 16</b>	
Road =	Oak Springs Drive
Cross Street =	Oak Forest Drive
Location =	In Sidewalk
Modular Wetland =	MWS-L-4-17-C-UG
Pre-Treat Cartridges =	2
Est. Removal/Cleaning =	5.3 CF
Trough in Catch Basin =	<b>No</b>
Access = (hex-bolted)	(1) 30"x48" Hatches <b>(1) 30" ø MH (O&amp;M Main)</b> (1) 24" ø MH



<b>SITE 17</b>	
Road =	Oak Point Drive
Cross Street =	Southeasterly Cul-de-sac
Location =	In Street
Modular Wetland =	MWS-L-4-19-V-UG
Pre-Treat Cartridges =	2
Est. Removal/Cleaning =	5.3 CF
Trough in Catch Basin =	<b>Yes</b>
Access = (hex-bolted)	(2) 30"x48" Hatches <b>(1) 30" ø MH (O&amp;M Main)</b> (1) 24" ø MH



<b>SITE 18</b>	
Road =	Kanan Road
Cross Street =	Cresthill Drive
Location =	In Sidewalk
Modular Wetland =	MWS-L-4-17-C-UG
Pre-Treat Cartridges =	2
Est. Removal/Cleaning =	5.3 CF
Trough in Catch Basin =	<b>No</b>
Access = (hex-bolted)	(1) 30"x48" Hatches <b>(1) 30" ø MH (O&amp;M Main)</b> (1) 24" ø MH



<b>SITE 19A</b>	
Road =	Kanan Road
Cross Street =	Smoketree Avenue
Location =	In Road Median
Modular Wetland =	MWS-L-4-8-C
Pre-Treat Cartridges =	1
Est. Removal/Cleaning =	3.3 CF
Trough in Catch Basin =	<b>No</b>
Access = (hex-bolted)	<b>(1) 36"x36" Hatches (O&amp;M Main)</b>



<b>SITE 19B</b>	
Road =	Kanan Road
Cross Street =	Smoketree Avenue
Location =	In Road Median
Modular Wetland =	MWS-L-4-21-C
Pre-Treat Cartridges =	2
Est. Removal/Cleaning =	5.3 CF
Trough in Catch Basin =	No
Access = (hex-bolted)	(1) 30" $\varnothing$ MH (O&M Main) (1) 24" $\varnothing$ MH

<b>SITE 20</b>	
Road =	Kanan Road (west side)
Cross Street =	Smoketree Avenue
Location =	In Grass Parkway
Modular Wetland =	MWS-L-4-8-V
Pre-Treat Cartridges =	1
Est. Removal/Cleaning =	3.3 CF
Trough in Catch Basin =	Yes
Access = (hex-bolted)	(1) 36"x36" Hatches (O&M Main)



### Modular Wetland System Diagram

