

# CALLEGUAS-LVMWD INTERCONNECTION



CALLEGUAS - LAS VIRGENES INTERCONNECTION



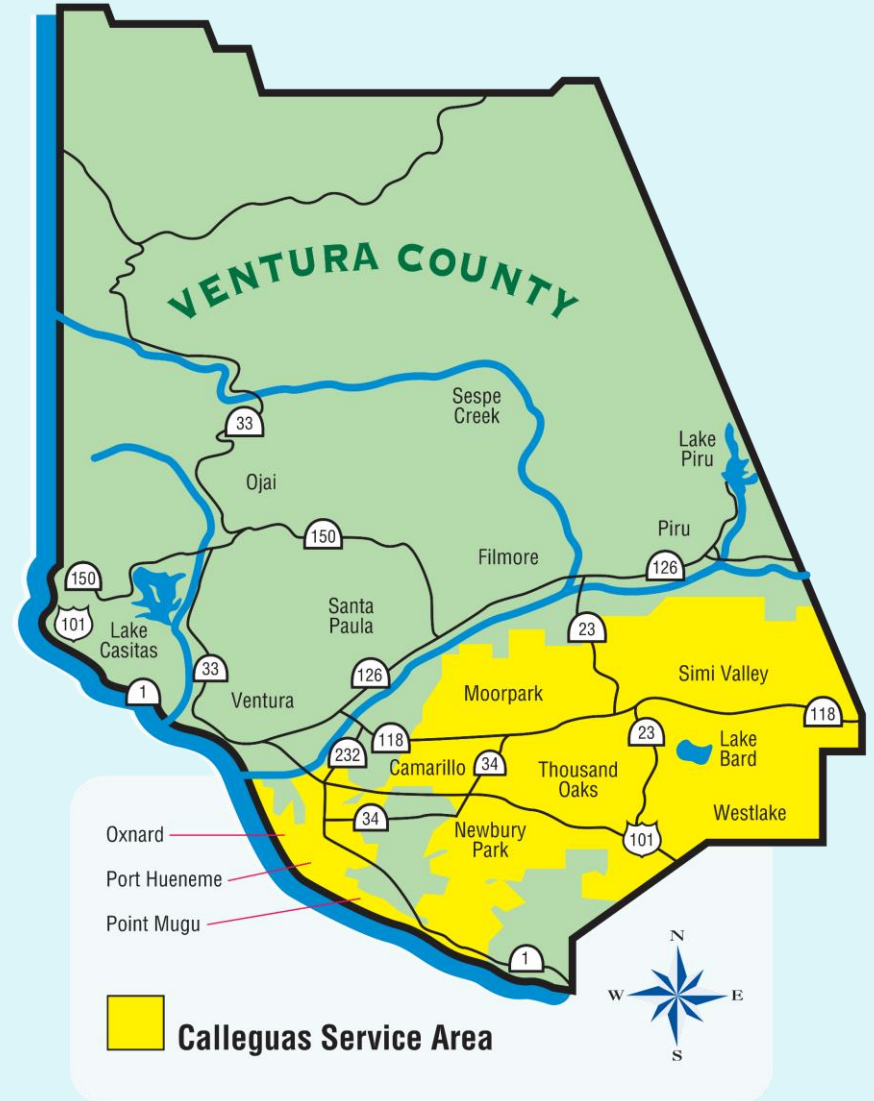
November 30, 2023  
Oak Park MAC Meeting





# Calleguas Overview

- Formed in 1953 by local communities to develop supplemental water supplies.
- Governed by a 5-member elected board
- 19 retailers
- >75% of VC's population (~640,000)

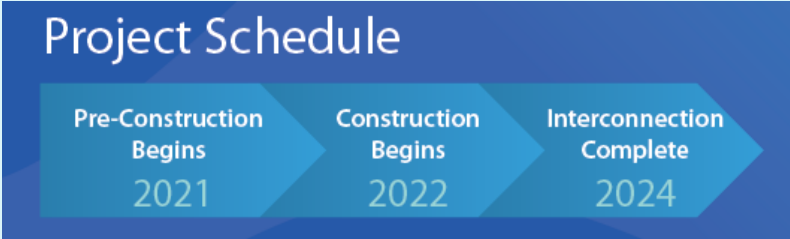


BERYLWOOD HEIGHTS & SOLANO VERDE

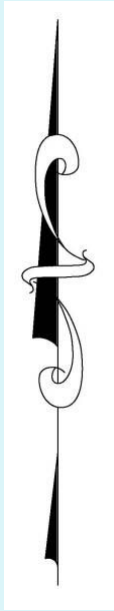
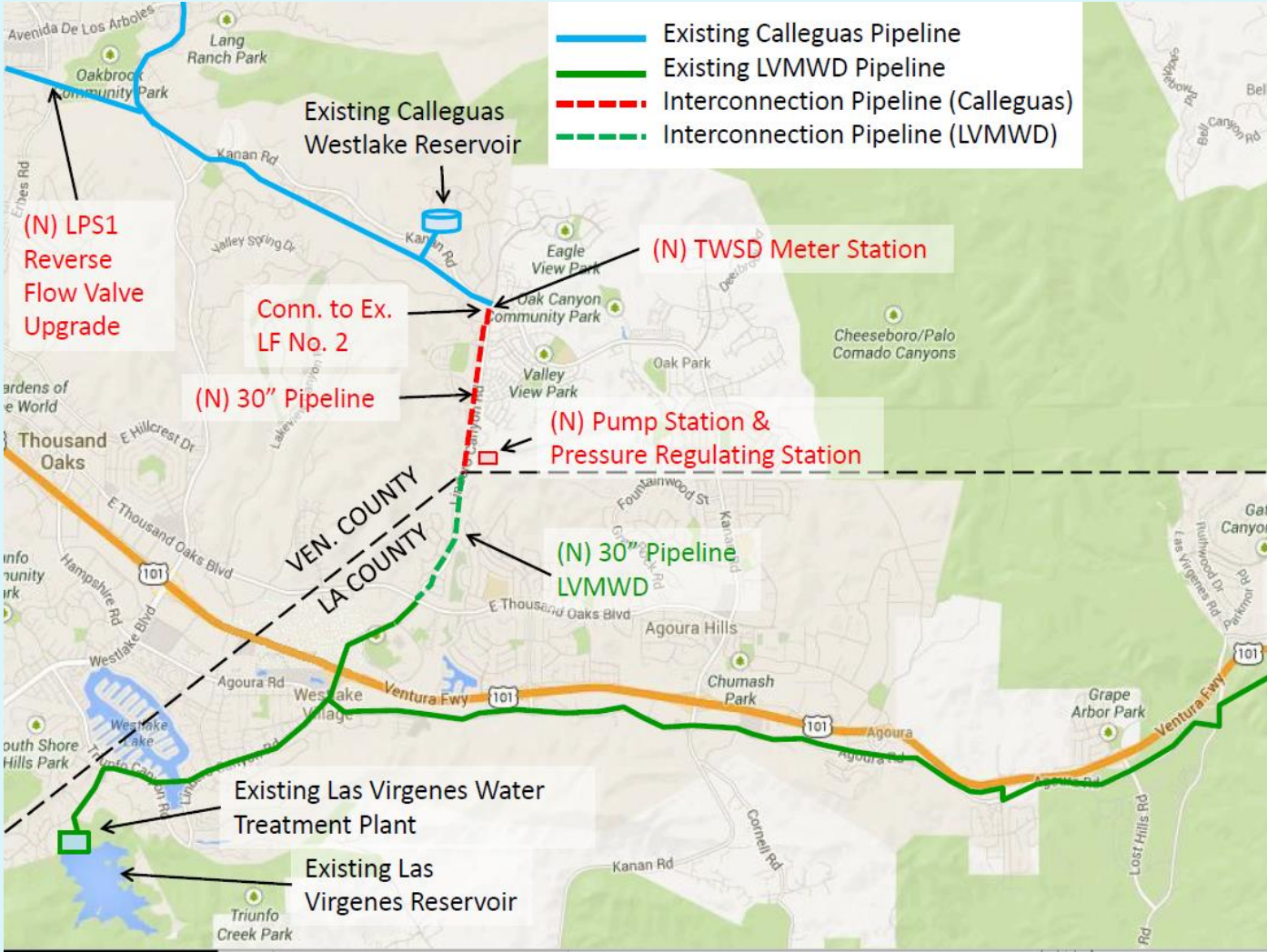
# PROJECT OVERVIEW



Calleguas Municipal Water District (Calleguas) and Las Virgenes Municipal Water District (LVMWD) each own and operate potable water systems largely dependent on imported water supply. Both agencies are subject to planned and unplanned interruptions of water deliveries that can negatively impact their ability to deliver potable water to their respective customers. Calleguas and LVMWD are constructing an interconnection to improve the future reliability of both systems.



# PROJECT OVERVIEW



# PROJECT NEED

- Both agencies are vulnerable to water supply outages due to earthquakes, infrastructure failure, or other causes.
- This project is a cost-effective way to improve reliability and flexibility of Calleguas' and LVMWD's potable water systems by delivering water to each other's system.
- Each agency would meet its customers' needs first, then help the other agency if they are able.



**UNDERGROUND PUMP  
STATION/PRESSURE  
REGULATING STATION**

# PROJECT HIGHLIGHTS

## Pump Station / Pressure Regulating Station progress



# PROJECT HIGHLIGHTS

## Pump Station / Pressure Regulating Station progress





# PROJECT HIGHLIGHTS

## Pump Station / Pressure Regulating Station progress



# PROJECT HIGHLIGHTS

## Pump Station / Pressure Regulating Station progress



# INTERCONNECTION PIPELINE

# PROJECT HIGHLIGHTS

## Pipeline modifications at Kanan Road



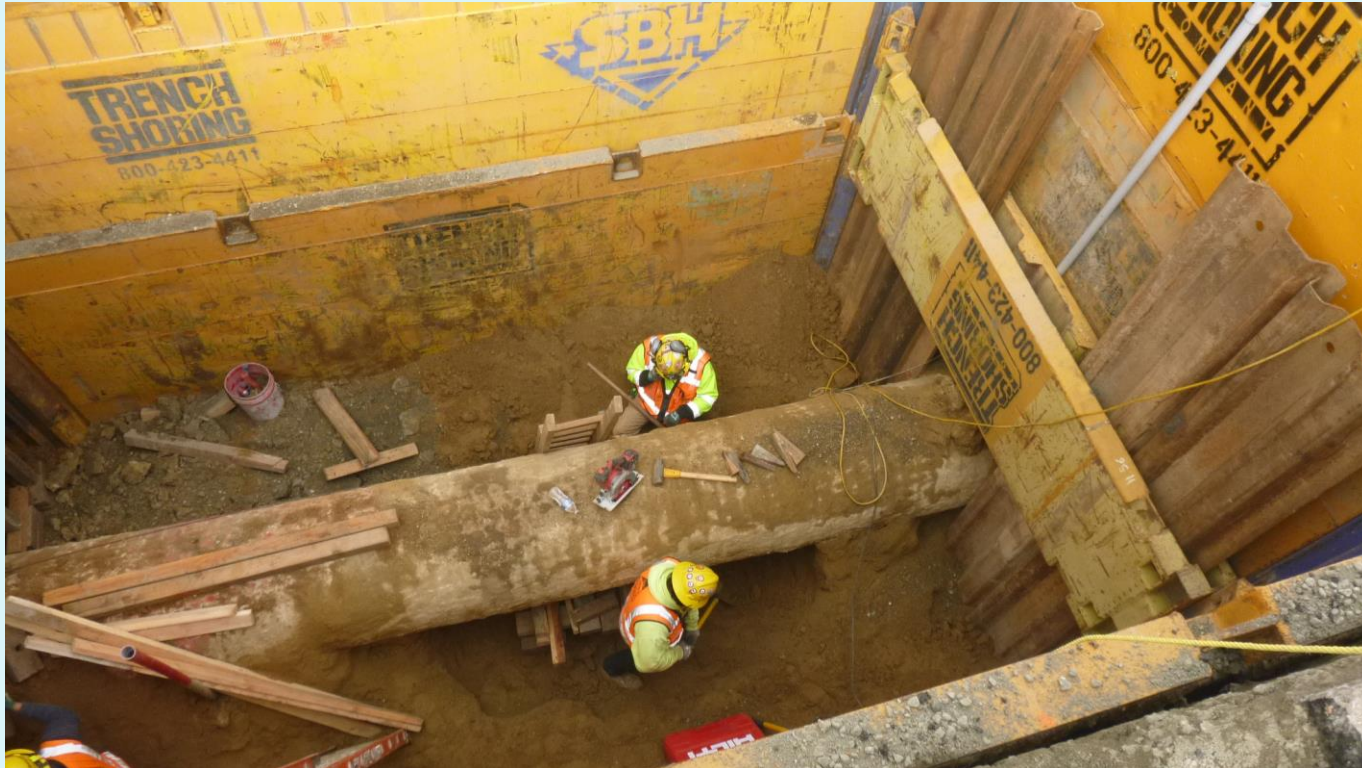
# PROJECT HIGHLIGHTS

## Pipeline modifications at Kanan Road



# PROJECT HIGHLIGHTS

## Pipeline modifications at Kanan Road



# PROJECT HIGHLIGHTS

## Pipeline modifications at Kanan Road



# PROJECT HIGHLIGHTS

## Pipeline installation progress north of Bowfield Street





# PROJECT HIGHLIGHTS

## Line Valve Vault south of Kanan intersection



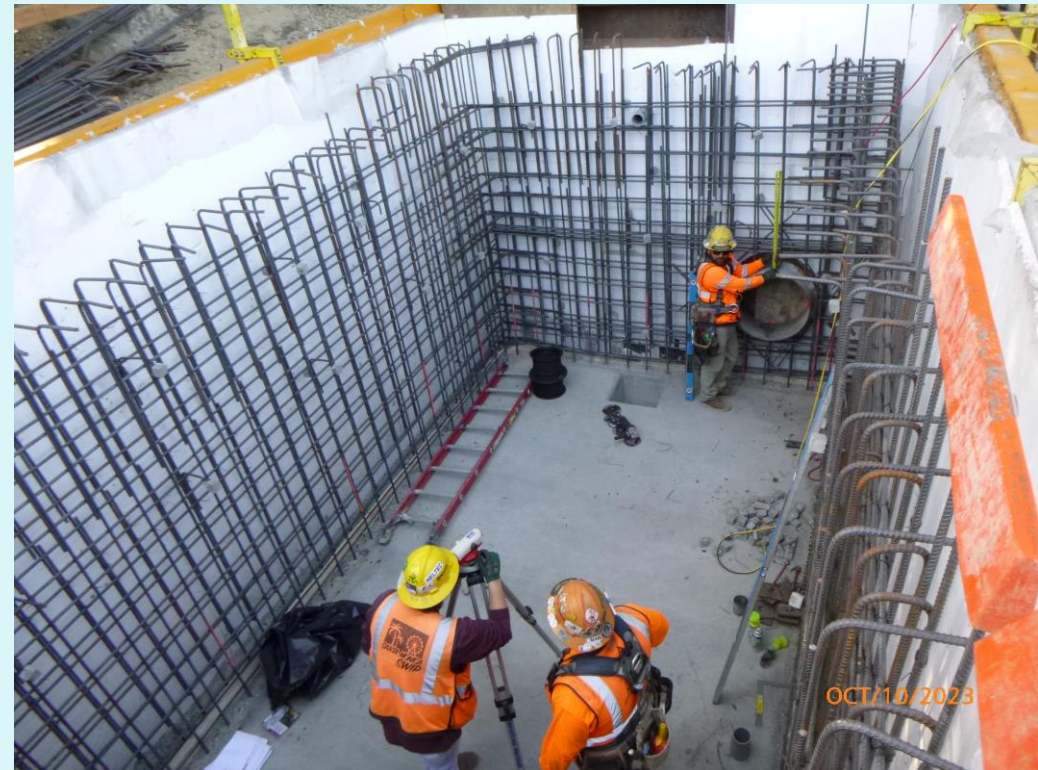


**\*Please Note:** Construction is dependent on many variables; dates may change

**TRIUNFO WATER AND  
SANITATION DISTRICT METER  
STATION**

# PROJECT HIGHLIGHTS

## Triunfo Water & Sanitation District Meter Station



# PROJECT HIGHLIGHTS

## Triunfo Water & Sanitation District Meter Station

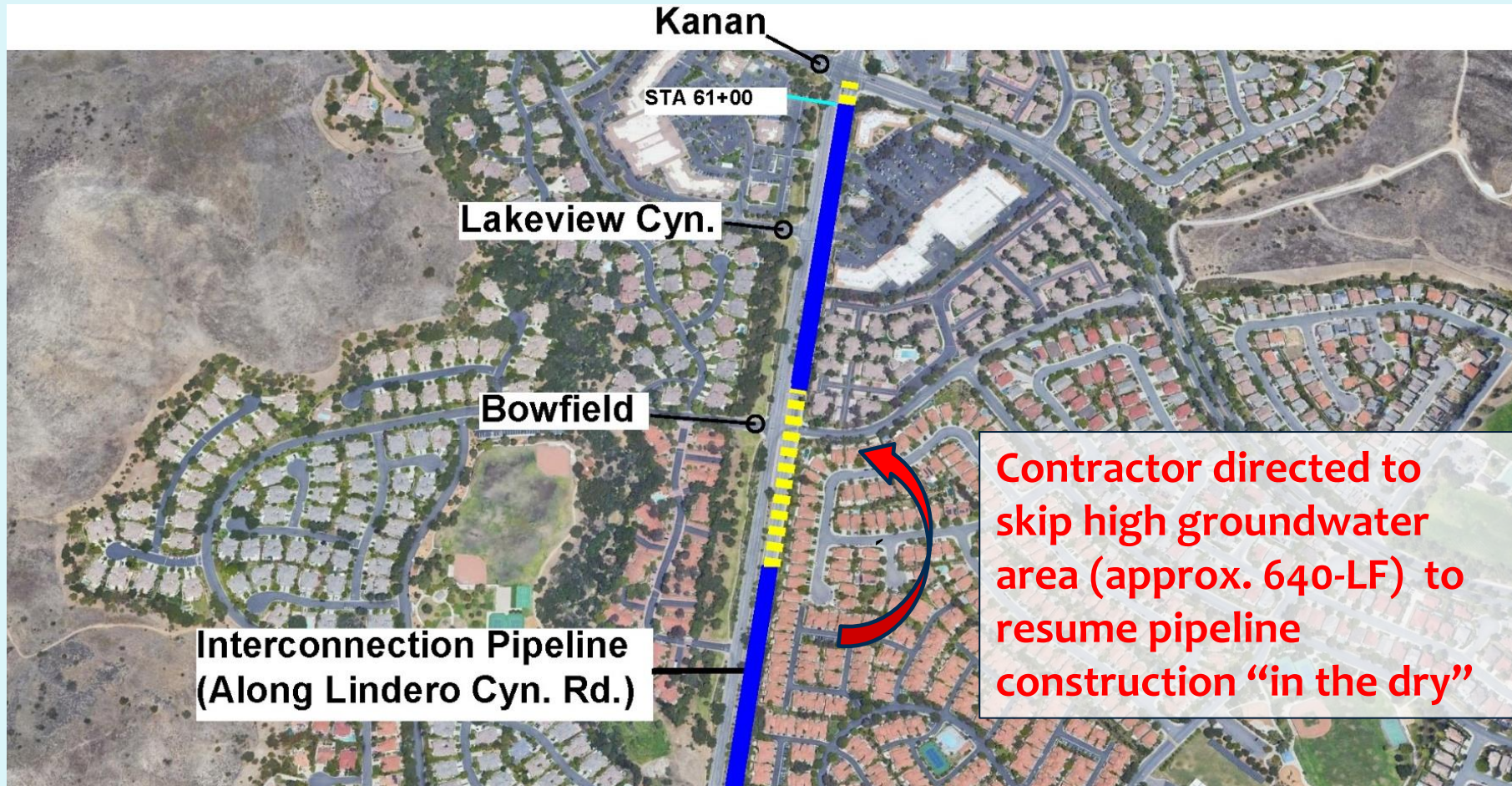


# SHALLOW GROUNDWATER ENCOUNTERED

- Shallow groundwater encountered along pipeline alignment during trench excavation and in temporary monitoring wells in March/April 2023.
- Location: South of, through, and north of Bowfield St/Lindero Canyon Rd intersection.
- Per monitoring well data, approx. 645 linear feet of pipe impacted by shallow groundwater.



# RESPONSE TO GROUNDWATER



# CONSTRUCTION IN TYPICAL TRENCH CONDITIONS





# CONSTRUCTION IN SHALLOW GROUNDWATER CONDITIONS



# WATER IN TRENCH AT START OF DAY



# AFTER DEWATERING



# SUPPORT FROM NEIGHBORING AGENCIES

- Calleguas staff performed exhaustive investigation of dewatering water disposal and reuse options.
- TWSD & LVMWD granted permission to discharge to sanitary sewer



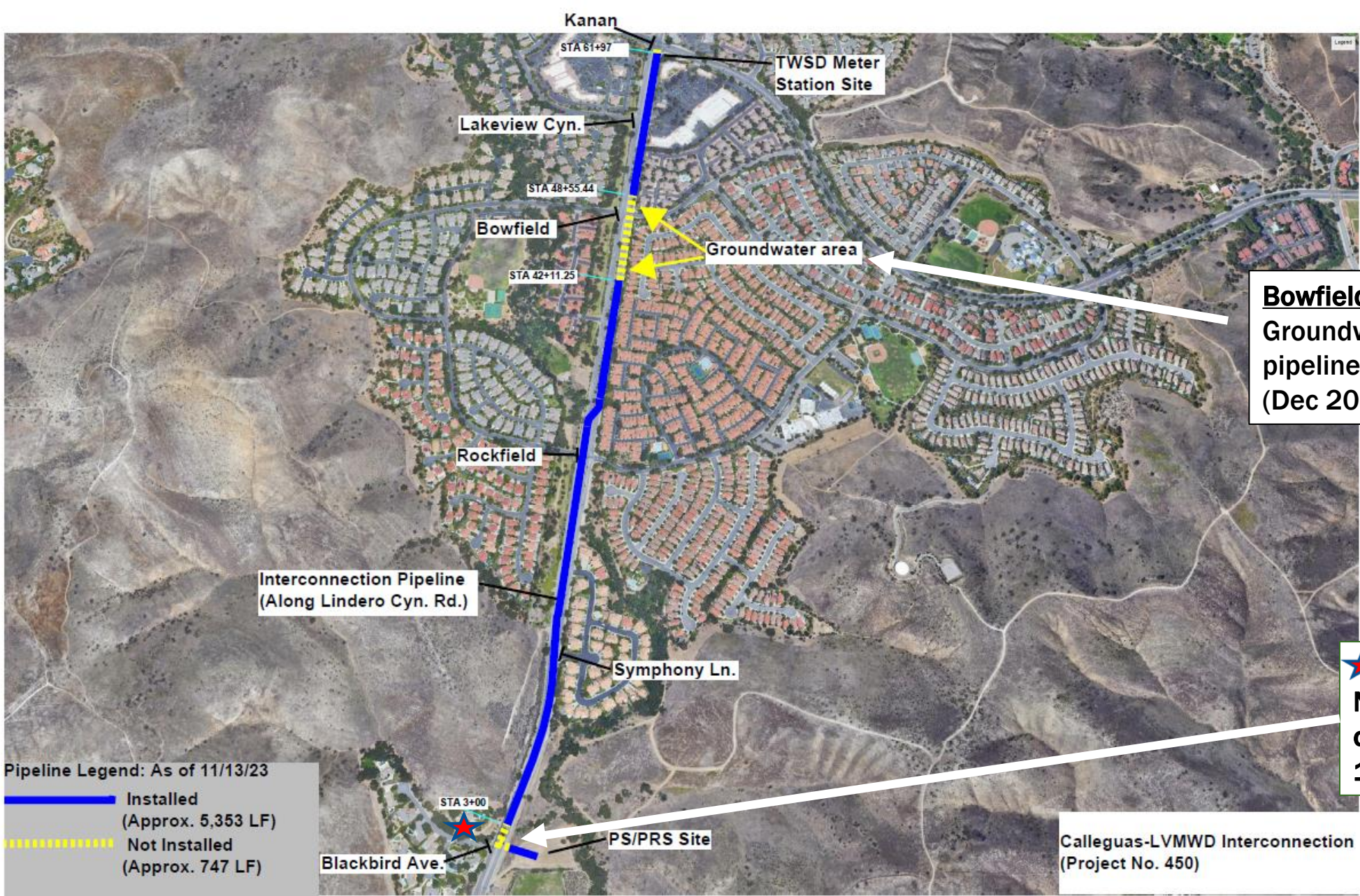
# DEWATERING ACTIVITIES

- Dewatering activities for 2023-2024:
  - Redesign of pipeline to reduce dewatering needs ✓
  - Relocate SoCal Gas line at Bowfield ✓
  - Connect to TWSD sewer to discharge dewatering water
  - Mobilize and install desilting tanks
  - Resume pipeline construction



# TRUCK WATER TO PS/PRS IF NEEDED





**Bowfield Intersection & Vicinity**  
 Groundwater dewatering &  
 pipeline construction activities  
 (Dec 2023 - early 2024)

**★ Blackbird Intersection**  
 Nightwork pipeline  
 construction scheduled  
**12/11 - 12/15**

Pipeline Legend: As of 11/13/23

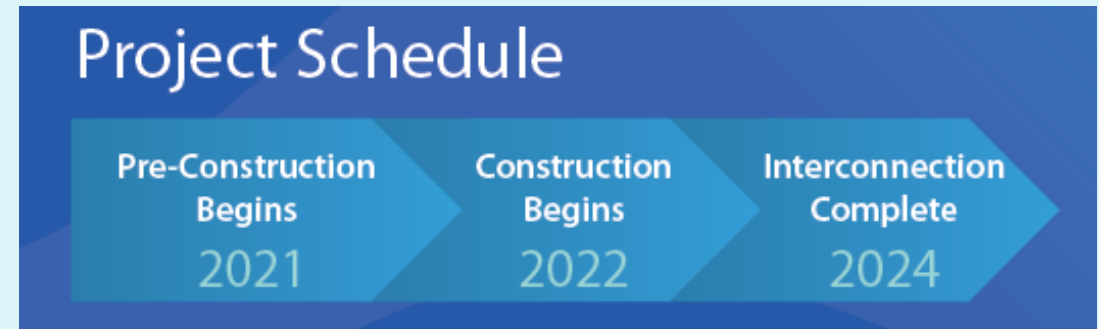
- █ Installed  
(Approx. 5,353 LF)
- - - - - Not Installed  
(Approx. 747 LF)

Calleguas-LVMWD Interconnection  
 (Project No. 450)

**\*Please Note:** Construction is dependent on many variables; dates may change

# ANTICIPATED SCHEDULE MILESTONES

- Early/mid Spring 2024
  - Completion of dewatering activities
- Mid/late Spring 2024
  - Completion of Interconnection pipeline and testing
- Summer 2024
  - Completion of Interconnection Pump Station, Pressure Reducing Station, and TWSD Meter Station startup & testing
  - City of Thousand Oaks begins Lindero Canyon Road pavement improvements





# OUTREACH FROM CALLEGUAS



## CONSTRUCTION ACTIVITY RESUMING LINDERO CANYON RD/BOWFIELD ST

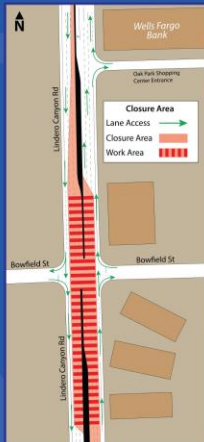
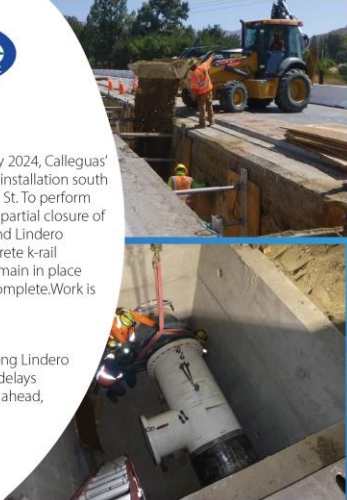
Starting in mid-December 2023 and continuing through early 2024, Calleguas' contractor, Kiewit, will begin trench dewatering and pipeline installation south of and at the intersection of Lindero Canyon Rd and Bowfield St. To perform this work safely and properly stage dewatering equipment, a partial closure of the intersection and a portion of northbound and southbound Lindero Canyon Rd are needed. Traffic control devices including concrete k-rail barricades, traffic cones, and temporary traffic signage will remain in place 24-hours a day, until this segment of pipeline installation is complete. Work is scheduled to occur **daily, Monday - Friday, 5 a.m. to 7 p.m.**

### TRAFFIC DELAYS ARE EXPECTED

Traffic control and temporary signage will remain in place along Lindero Canyon Rd, Bowfield St, and surrounding local streets. Traffic delays through the area may occur due to lane closures. Please plan ahead, allow for extra travel time, and if possible, avoid the area.

### CONTACT US

[www.CMWD-LVMWDinterconnection.com](http://www.CMWD-LVMWDinterconnection.com)  
 @CalleguasMWD | (800) 371-0723



### CONSTRUCTION SCHEDULE & CLOSURES

**Work Hours**  
 Monday - Friday  
 Daily, 5 a.m. to 7 p.m.

- Extended **partial** closure of the Lindero Canyon Rd and Bowfield St intersection.
- Concrete k-rail barriers in place along Lindero Canyon Rd through the intersection 24hrs.
- Right-turn and straight traffic maintained along northbound and southbound Lindero Canyon Rd through the intersection.
- Right-turn only maintained along Bowfield St approaching Lindero Canyon Rd.

For additional detour information, weekly construction schedules, and other project information, visit [www.CMWD-LVMWDinterconnection.com](http://www.CMWD-LVMWDinterconnection.com).

### NEED ASSISTANCE?

Calleguas and its contractor are committed to safely conducting all construction activity while mitigating impacts to surrounding communities as much as possible. For immediate assistance, please contact our team directly at (800) 371-0723 or via email at [info@calleguas.com](mailto:info@calleguas.com).

Please note, construction is dependent on many variables including weather, construction material and crew availability. Schedule information is subject to change.



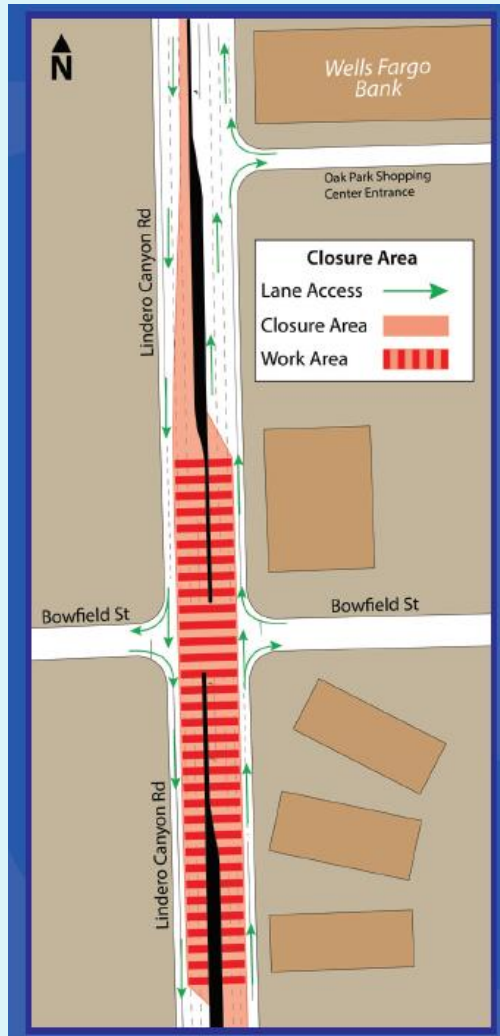
## CONSTRUCTION ACTIVITY RESUMING LINDERO CANYON RD/BOWFIELD ST

Starting in mid-December 2023 and continuing through early 2024, Calleguas' contractor, Kiewit, will begin trench dewatering and pipeline installation south of and at the intersection of Lindero Canyon Rd and Bowfield St. To perform this work safely and properly stage dewatering equipment, a partial closure of the intersection and a portion of northbound and southbound Lindero Canyon Rd are needed. Traffic control devices including concrete k-rail barricades, traffic cones, and temporary traffic signage will remain in place 24-hours a day, until this segment of pipeline installation is complete. Work is scheduled to occur **daily, Monday - Friday, 5 a.m. to 7 p.m.**

### NEED ASSISTANCE?

Calleguas and its contractor are committed to safely conducting all construction activity while mitigating impacts to surrounding communities as much as possible. For immediate assistance, please contact our team directly at (800) 371-0723 or via email at [info@calleguas.com](mailto:info@calleguas.com).

# EXTENDED PARTIAL CLOSURE OF INTERSECTION LINDERO CANYON RD/BOWFIELD ST



## CONSTRUCTION SCHEDULE & CLOSURES

**Work Hours**  
Monday - Friday  
Daily, 5 a.m. to 7 p.m.

- Extended **partial** closure of the Lindero Canyon Rd and Bowfield St intersection.
- Concrete k-rail barriers in place along Lindero Canyon Rd through the intersection 24hrs.
- Right-turn and straight traffic maintained along northbound and southbound Lindero Canyon Rd through the intersection.
- Right-turn only maintained along Bowfield St approaching Lindero Canyon Rd.

# Want to Learn More?

Visit [CMWD-LVMWDinterconnection.com](http://CMWD-LVMWDinterconnection.com) and subscribe to weekly construction update e-mails and view detailed project information



**Project Update Sign Up**

Comments/Questions Form

Name (First & Last)\*

Email\*

Home/Business Address

I would like...

to be added to project email distribution list

to request more help with a comment/question

**Contact**  
For questions related to the project, please contact:  
Project Helpline: [\(800\) 371-0723](tel:8003710723)

Fill out and submit!

**Construction Activity Update**  
Week of: November 27, 2023

**Current Activity**

Daywork will continue at the southeast corner of the Lindero Canyon Rd and Kanan Rd intersection, **Monday (11/27) through Friday (12/01) between the hours of 7 a.m. and 3 p.m.**, and will include construction activities for Triunfo Water & Sanitation District's new Meter Station. To perform this work safely, set-up and take-down of daily traffic control will be implemented. Please follow posted traffic signs and plan for extra travel time to your destination.

Nightwork will occur south of the Lindero Canyon Rd and Kanan Rd intersection, **Monday (11/27) through Thursday (11/30) between the hours of 7 p.m. to 5 a.m.**, and will include pipeline construction activities near an underground vault. To perform this work safely, set-up and take-down of nightly traffic control will be implemented.

**Extended weekend and night work will occur at the southeast corner of the Lindero Canyon Rd and Kanan Rd intersection, Friday (12/01) 9 p.m. through Monday (12/04) 5 a.m.**, and will include construction activities for Triunfo Water & Sanitation District's new Meter Station for up to 24 hours per day. Traffic control will remain in place 24 hours per day from Friday night through Monday morning. Please follow posted traffic signs and plan for extra travel time to your destination.

Work will continue at the Pump Station/Pressure Reducing Station (PS/PRS) site located at 10 Lindero Canyon Rd. Please note, construction is dependent on many variables, including, but not limited to weather conditions, and this information is subject to change.

[Project Website](#)

**Upcoming Activity**

Construction crews have encountered shallow groundwater along the pipeline alignment at the Bowfield St/Lindero Canyon Rd intersection. Pipeline installation and dewatering activities through this intersection have been temporarily paused, as underground site conditions have changed. To ensure this segment of the interconnection is installed properly and safely and to minimize additional costs, Calleguas and its contractor Kiewit are developing a new workplan for this section of the project. To ensure the safety of motorists and pedestrians, k-rail and temporary traffic control will remain in place through the intersection until this work is complete. The contractor continues to make progress along other portions of the project while the revised work plan is finalized.

# THANK YOU!

MAYA HOLCOMB, MPPA  
MANAGEMENT ANALYST

[MHOLCOMB@CALLEGUAS.COM](mailto:MHOLCOMB@CALLEGUAS.COM)

\* PROJECT HELPLINE: 800-371-0723 \*



CALLEGUAS - LAS VIRGENES INTERCONNECTION

