



Construction Activity Update

Week of: June 24, 2024

Current Activity

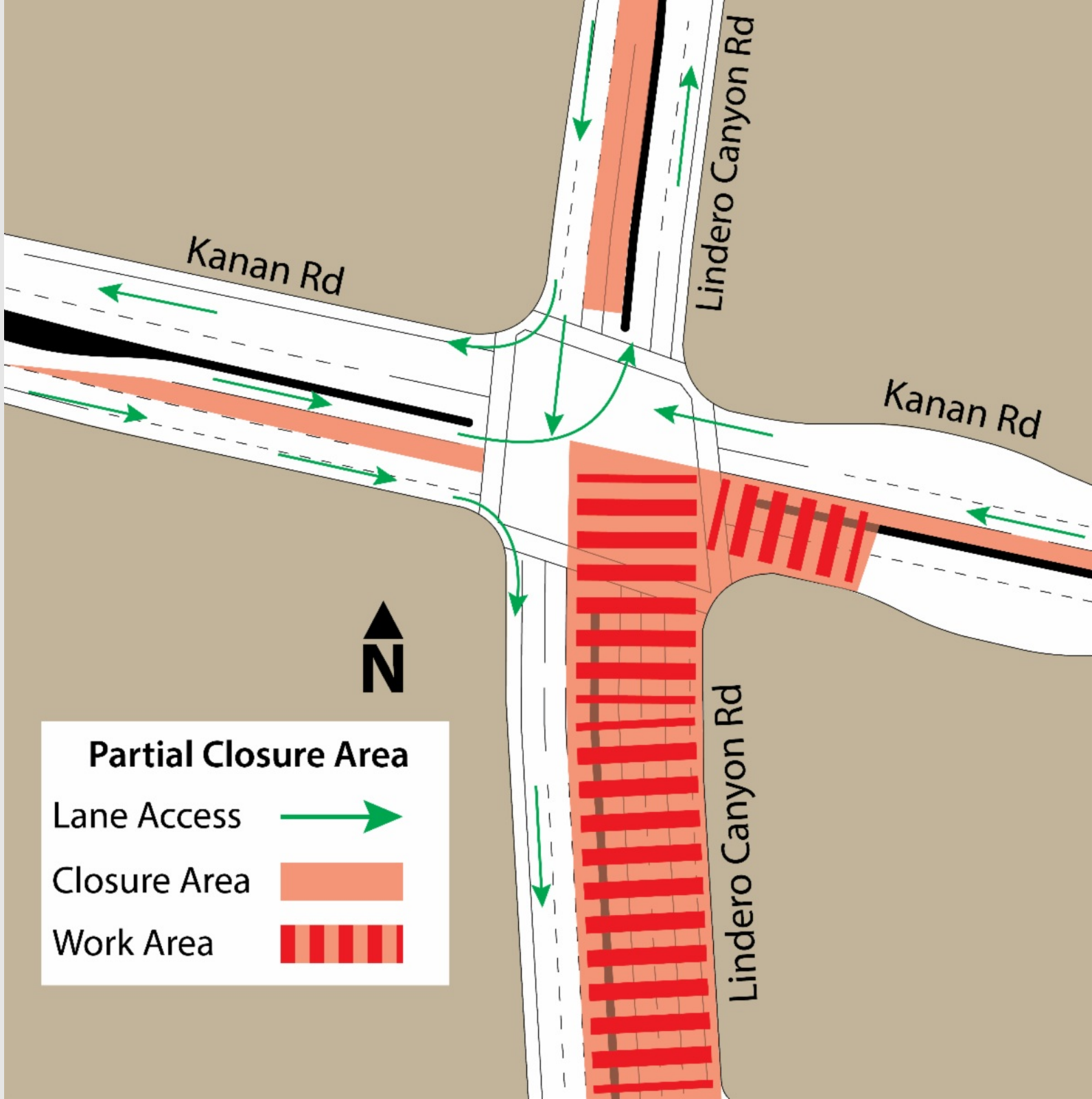
As weather permits, Calleguas' contractor, Kiewit, will perform work at the following locations along Lindero Canyon Road:

- Kanan and Lindero Canyon Rd intersection: **Friday (06/21) 7pm through Monday (07/01) 6am, 24 hours per day.** Work will include pipeline construction activities. To perform this work safely, a partial closure of the intersection will be implemented. Traffic control through the intersection and a traffic detour will be in place during work hours. Please follow posted traffic signs and plan for extra travel time to your destination.
- South of Kanan and Lindero Canyon Rd intersection: **Monday (06/24) through Friday (06/28) between the hours of 7 a.m. to 4 p.m., and Friday (06/21) 7pm through Monday (07/01) 6am, 24 hours per day.** Work will include pipeline construction activities at pipeline access manholes and vaults. To perform this work safely, set-up and take-down of daily traffic control in select northbound and southbound lanes will be implemented along Lindero Canyon Road. Please follow posted traffic signs and plan for extra travel time to your destination.
- Pump Station/Pressure Reducing Station (PS/PRS) site located at 10 Lindero Canyon Rd: **Monday (06/24) through Friday (07/01) between the hours of 7 a.m. to 5 p.m.** Work will include construction activities at the site and within the underground PS/PRS facility.

Please note, construction is dependent on many variables, including, but not limited to weather conditions, and this information is subject to change.

[Project Website](#)

Closures and Detours



Project Background

Calleguas Municipal Water District (Calleguas) and Las Virgenes Municipal Water District (LVMWD) each own and operate potable water systems largely dependent on imported water supply. Both agencies are subject to planned and unplanned interruptions of water deliveries that can negatively impact their ability to deliver potable water to their respective customers. Calleguas and LVMWD are constructing an interconnection to improve the future reliability of both systems.

Calleguas will construct a new Pump Station/Pressure Regulating Station (PS/PRS) located along Lindero Canyon Rd. just north of the Ventura County/Los Angeles County

line. Additionally, Calleguas will construct the North Interconnection Pipeline segment along Lindero Canyon Rd. between the PS/PRS and Kanan Rd., and other related facilities. Construction activities overseen by LVMWD, primarily south of the Los Angeles County line, has concluded.



Project Objectives

- Improve the reliability and flexibility of your water storage and distribution systems.
- Improve the ability to provide potable water to you during periods of reduced imported water supply.
- Reduce the risk for potential water shortages associated with natural disasters, such as wildfire and earthquake, and required system maintenance.



Enhancing regional water supply reliability in an economically and environmentally responsible manner.

Stay Connected



(800) 371-0723



@CalleguasMWD



cmwd-lvmwdinterconnection.com