



Rancho Simi

RECREATION AND PARK DISTRICT

**Rancho Simi
Recreation and Park District**

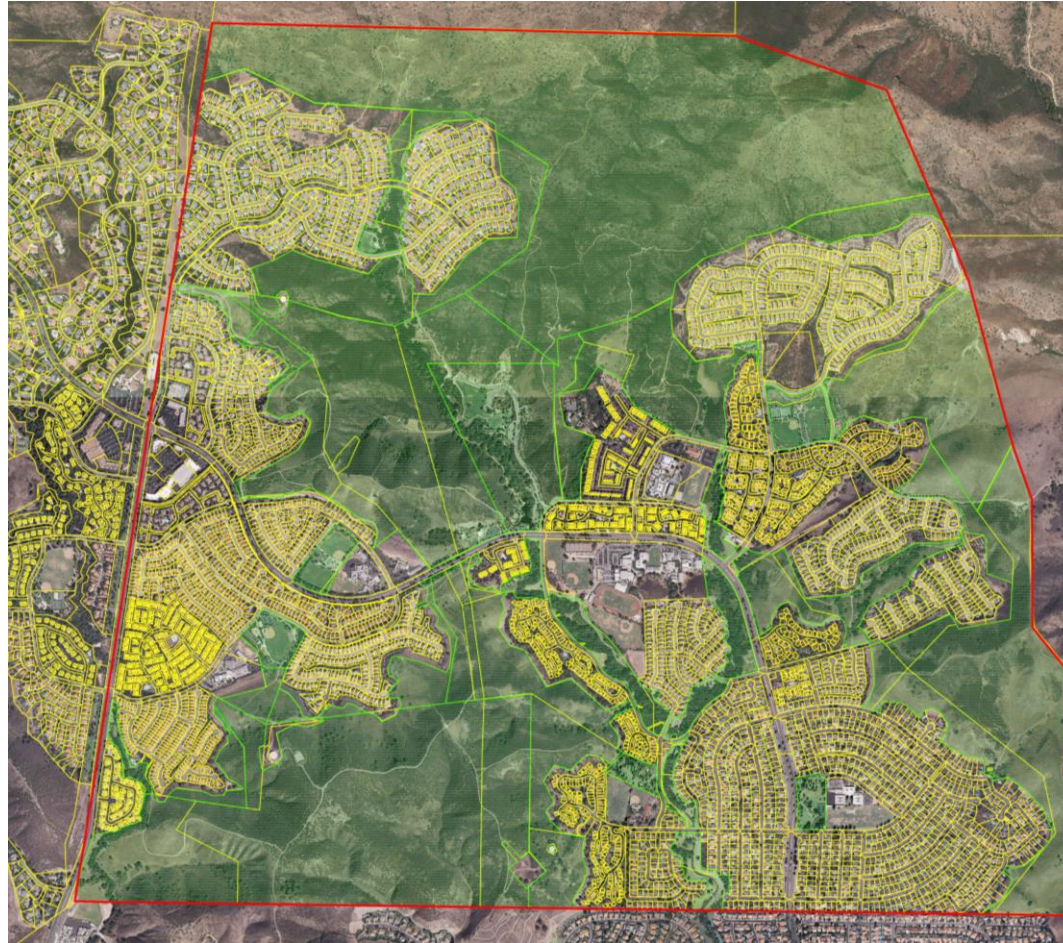
Local Vegetation Management Programs
(Open Space Areas)

Park District Open Space

Is preserved in its natural state for conservation and environmental protection of plants and wildlife.



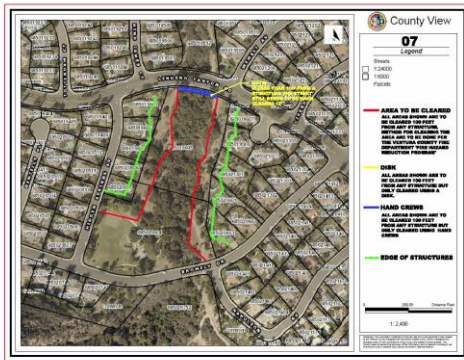
How Much Open Space does the Park District own in Oak Park?



Approximately 875 Acres

What Does the Park District Provide in Open Space Areas in Oak Park?

- Annual Brush and Fuel Clearance of 100 Feet from Structures
- Stormwater Protection Measures and Erosion Clean-Up
- Maintains Approximately 20 Miles of Multi-Purpose Trails
- Monitors for Possible Encampments and Fire Hazards
 - Remove Illegal Dumping



How Much Open Space was affected by the Woolsey Fire?



Approximately 770 Acres (88% of the Open Space)

Current Impacts

- Hillside are now primarily covered with Mustard Plants where bushes and shrubs once thrived
- A variety of invasive plant species took foothold along Medea Creek
 - Fire Debris is visually apparent



Wildfire Prevention Early Budget Action Funding Plan Grant

- Park District applied for and was awarded a \$395,000 Grant from the State of California Natural Resource Agency through the Santa Monica Mountains Conservancy for the Medea Creek Wildfire Resiliency Project.
- This project has three major components:
 1. Fire Debris and Invasive Plant Removal along Medea Creek.
 2. Creation of a Oak Tree Fire Break along the northeasterly leading edge of the community.
 3. Purchase of a Bobcat Skid-Steer with attachments to widen trails for fire access and on-going fuel management activities.



Contact Us



rsrpd.org



info@rsrpd.us



[@RSRPD_rec](https://www.instagram.com/RSRPD_rec)



805-584-4400



[@RSRPD_rec](https://twitter.com/RSRPD_rec)



4201 Guardian St.
Simi Valley, CA 93063



[Facebook.com/RSRPD](https://www.facebook.com/RSRPD)