



# Ventura County Sheriff's Office of Emergency Services

Whole Community Emergency Management

*October 8, 2015*

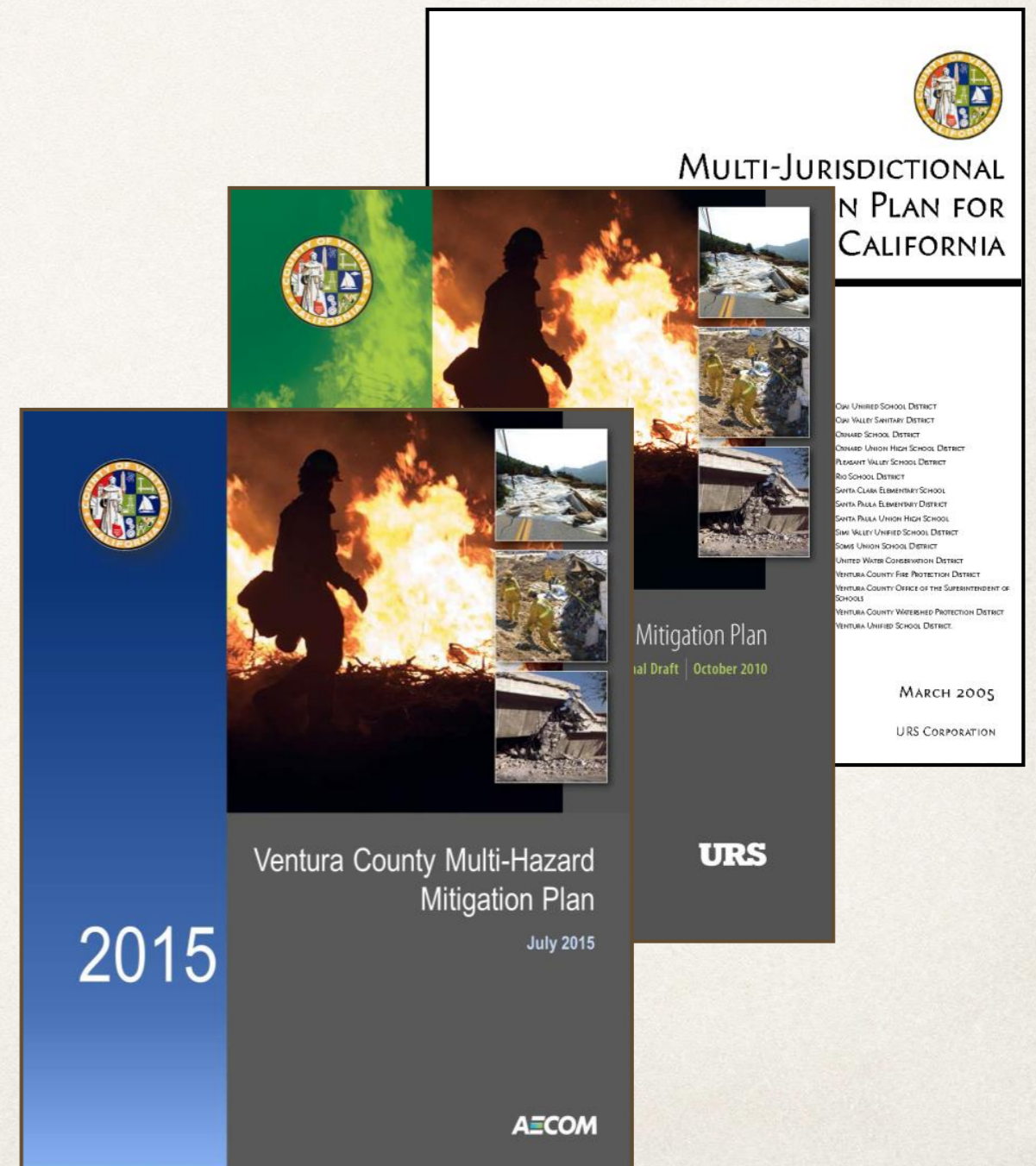
# Mission

- ❖ To protect life, property and the environment by preparing for, responding to, recovering from and mitigating against all hazards.



# Planning

- ❖ **Multi-Hazard Mitigation Planning (MHMP)**
- ❖ **5 year plan on its 3<sup>rd</sup> iteration. Includes the Community Rating System.**
- ❖ **Began in 2014, by securing FEMA funding and by building a planning coalition.**



# Hazard Mitigation Planning Elements

---

- ❖ Hazard Analysis
- ❖ Vulnerability Analysis
- ❖ Capability Assessment
- ❖ Mitigation Strategy
- ❖ Plan Maintenance



# MHMP Identified Hazards

---

**Agricultural Biological**

**Climate Change**

**Dam Failure**

**Drought**

**Earthquake**

**Flood**

**Landslide**

**Levee Failure Inundation**

**Post Fire Debris Flow**

**Severe Weather / Storm**

**Tsunami**

**Wildfire**

**Winter Storms**

# MHMP Examples

Figures

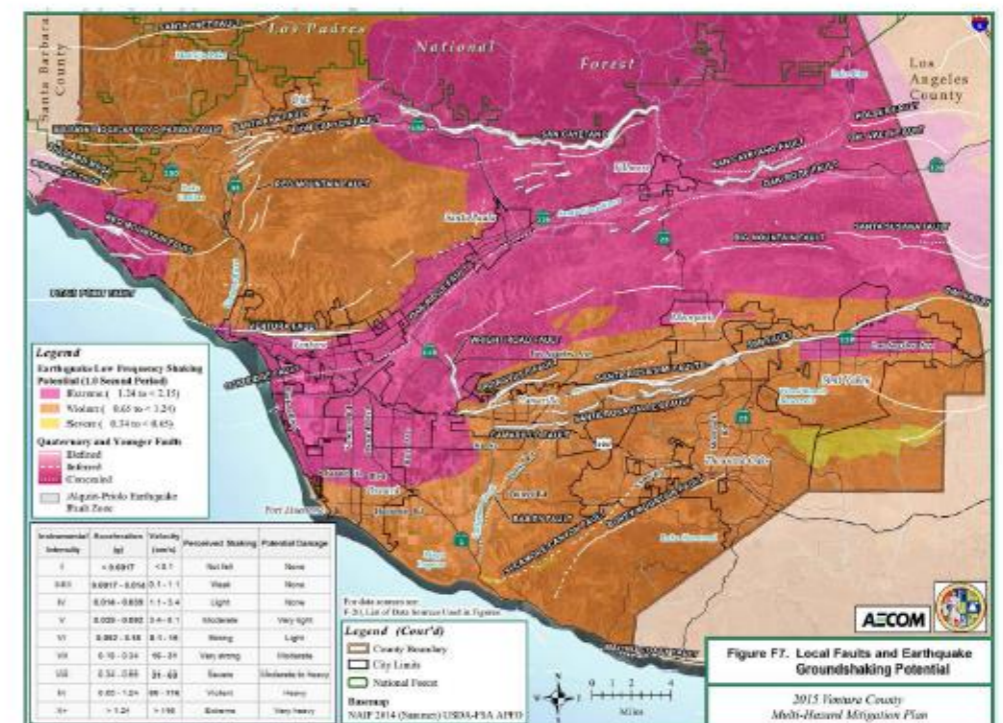
Appendix F



F-6

Figures

Appendix F



F-8

# Preparedness, Response & Recovery

---

# Preparedness



**VC ALERT**  
EMERGENCY NOTIFICATION SYSTEM

**Ready** Ventura County  
Prepare. Plan. Stay Informed.

**TsunamiReady**<sup>®</sup>  
NATIONAL WEATHER SERVICE

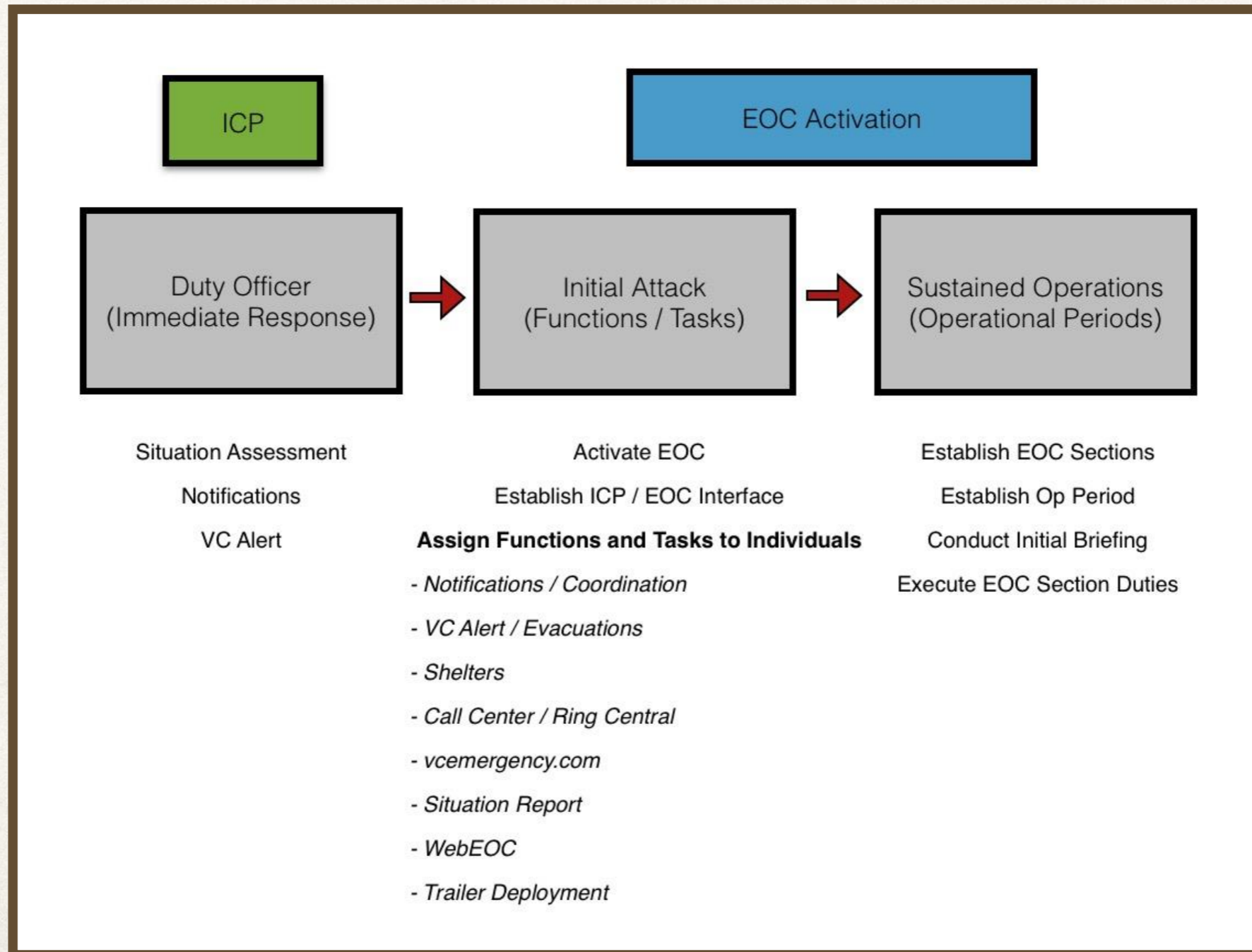
**Shake Out**<sup>™</sup>

**Great ShakeOut**  
Earthquake Drills





# Response



# Significant Incidents: 2013 - 2015



# Recovery

