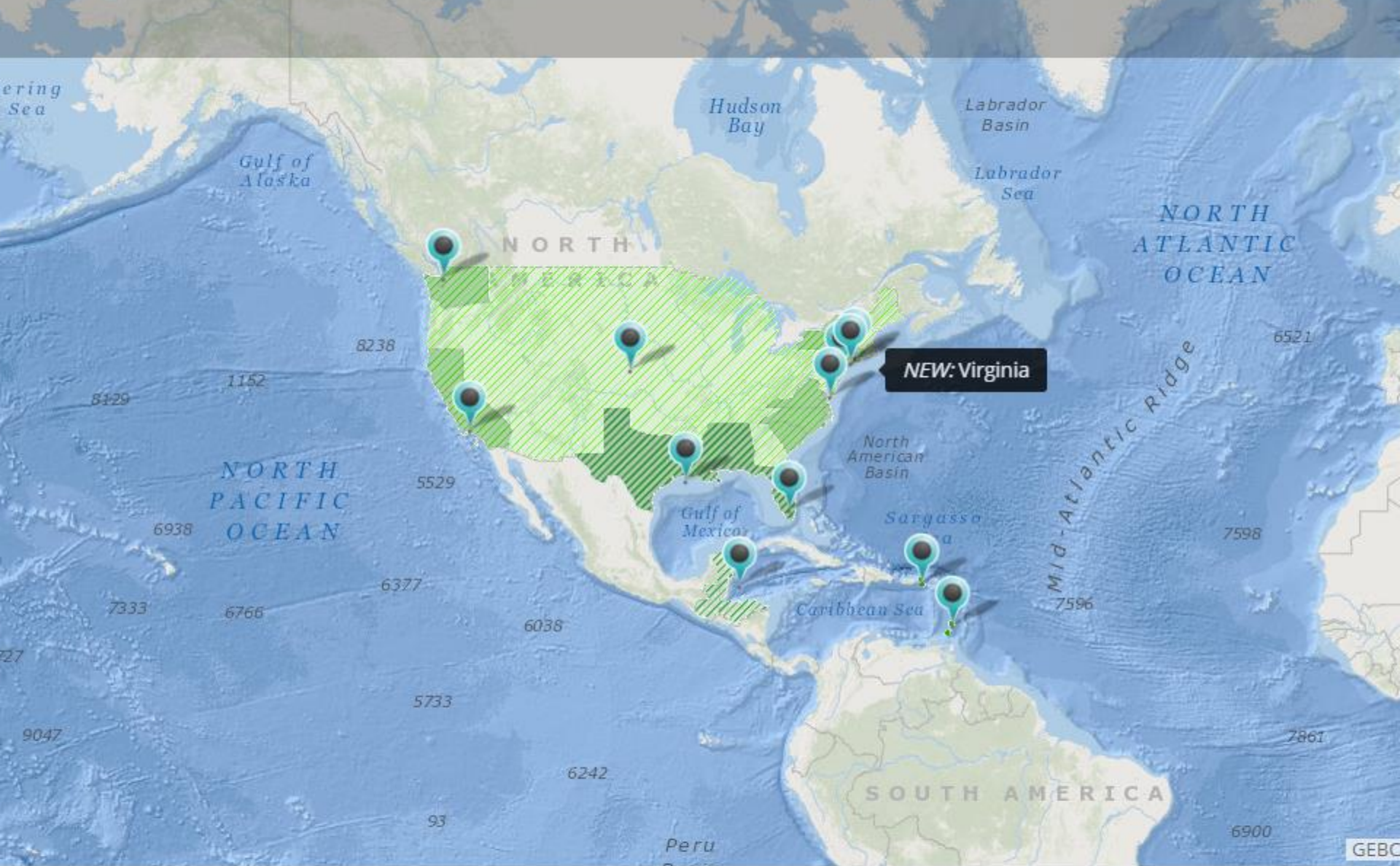


A background image of a coastal landscape at sunset. The sun is low on the horizon, casting a warm orange and yellow glow over the scene. In the foreground, there are tall, dry grasses or reeds. The sky is a mix of orange, yellow, and blue.

A global network dedicated to protecting human and natural coastal communities.

[Explore Our Work](#)



Coastal Resilience mapping portal

Click on the blue point markers on the map to navigate to specific geographies, or scroll down to see a list of places where we work. The green hatching on the map represents our Coastal Resilience coverage across countries, regions and states.



The Nature Conservancy
Protecting nature. Preserving life.



Cal EMA
CALIFORNIA EMERGENCY
MANAGEMENT AGENCY



United Water Conservation District
Protecting Resources. Balancing Needs.



Watersheds Coalition
of Ventura County



RESOURCE
CONSERVATION DISTRICTS



FEMA



SM



CAUSE

Central Coast Alliance United for A Sustainable Economy



CALIFORNIA
COASTAL
COMMISSION

Friends of the Santa Clara River



STATE OF CALIFORNIA
Coastal Conservancy



*Surfrider Foundation
Ventura County Chapter*



Surfrider
Foundation

Community
PlanningFuture
HabitatEconomic
AppFlood and
Sea Level
Rise

Switch To Map 2



Split View



Save & Share



Export Page

You are currently in

Ventura



Flood and Sea Level Rise

Choose a Region

Selected Region: Ventura

1. Select the hazard to view**Select the hazard to view**

- ☐ Tidal Inundation (monthly in feet)
- ☐ Wave Impact (large storm)
- ☐ Flood Inundation (large storm)
- ☐ River Flood Inundation (large storm)
- ☐ Erosion Risk
- ☐ Combined Erosion Risk
- ☒ Combined Hazards

2. Select the time and amount of sea level rise

Layer Properties:

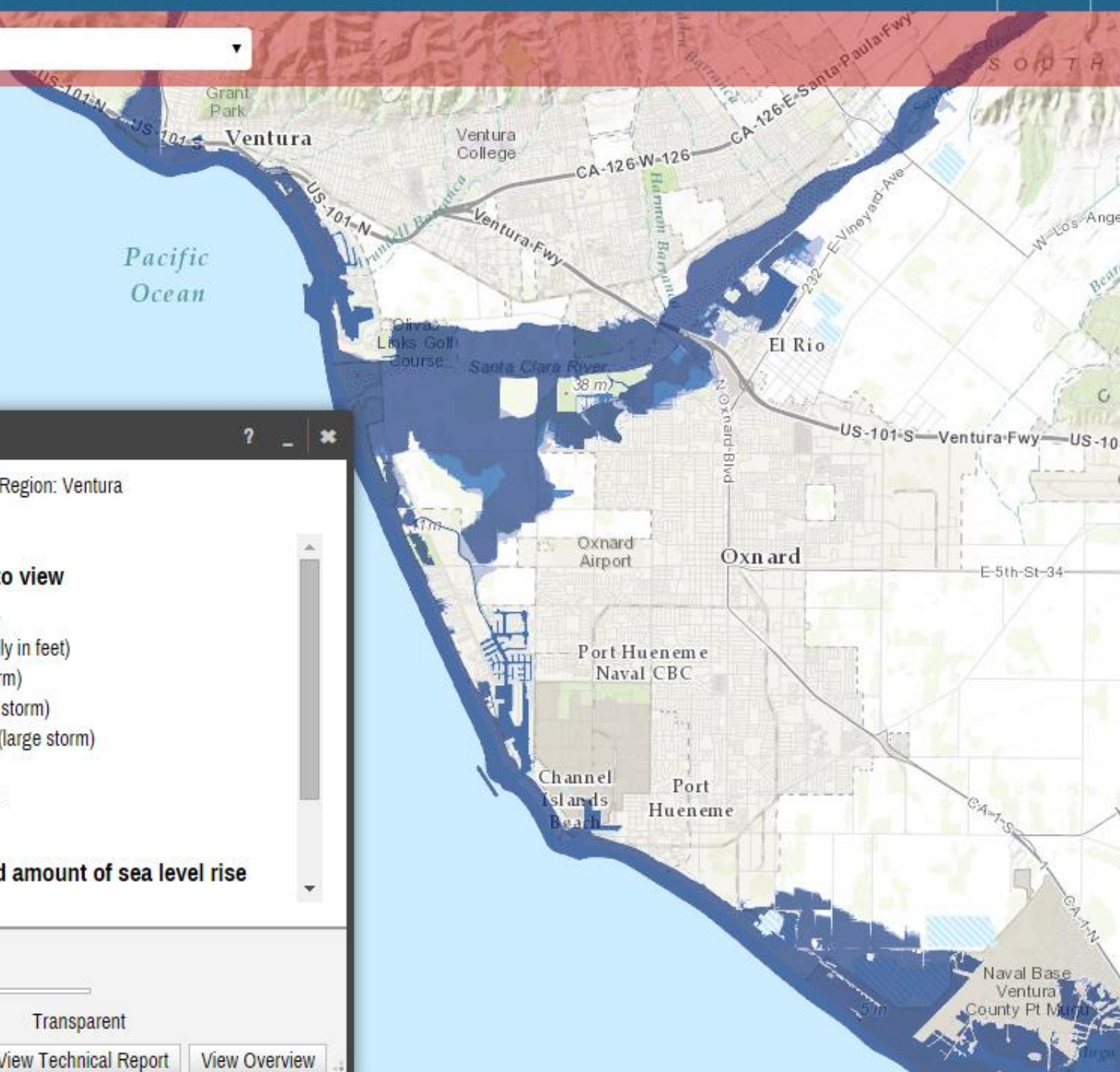
Opaque

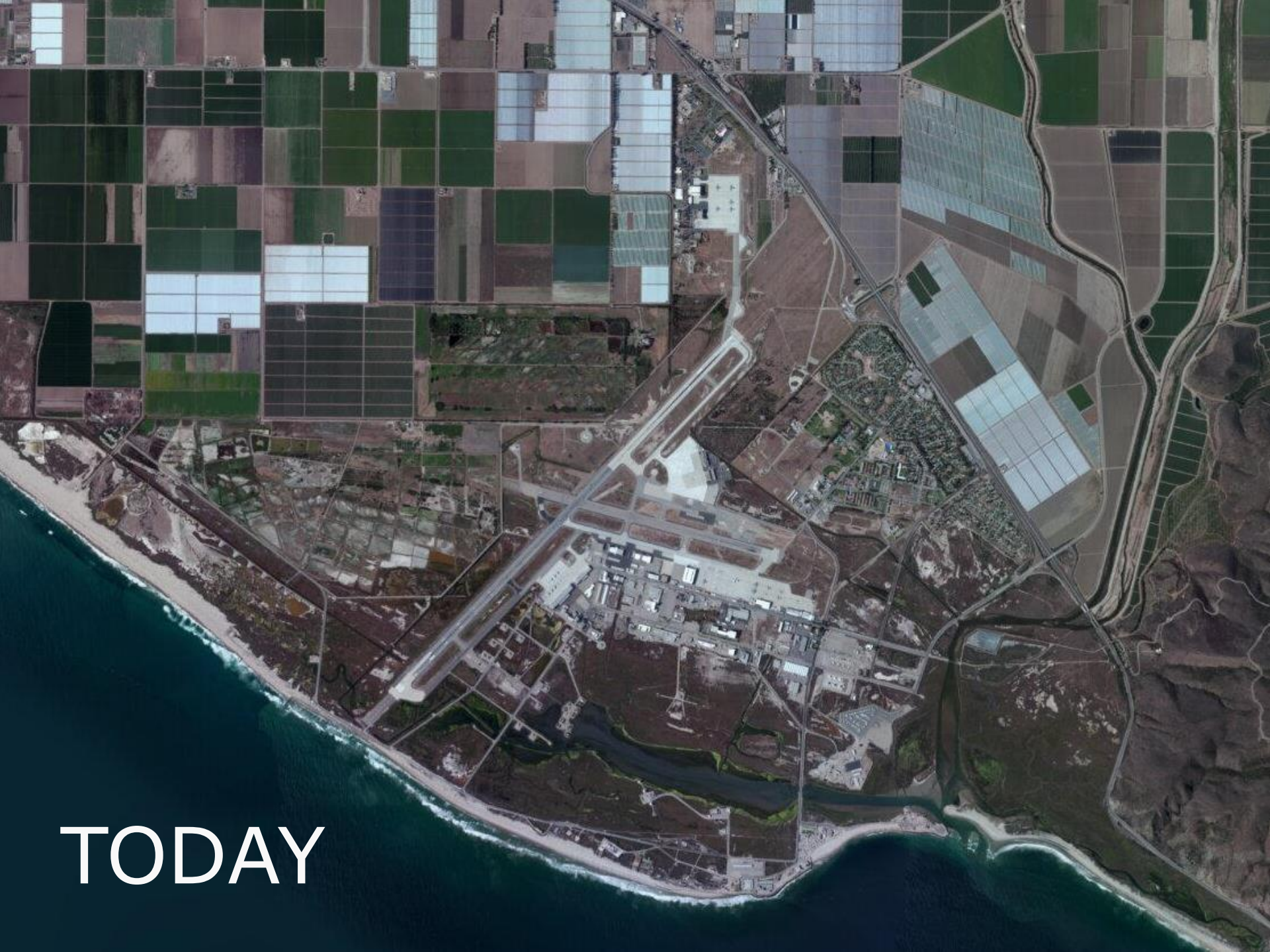
Transparent

Download Data

View Technical Report

View Overview





TODAY



2030



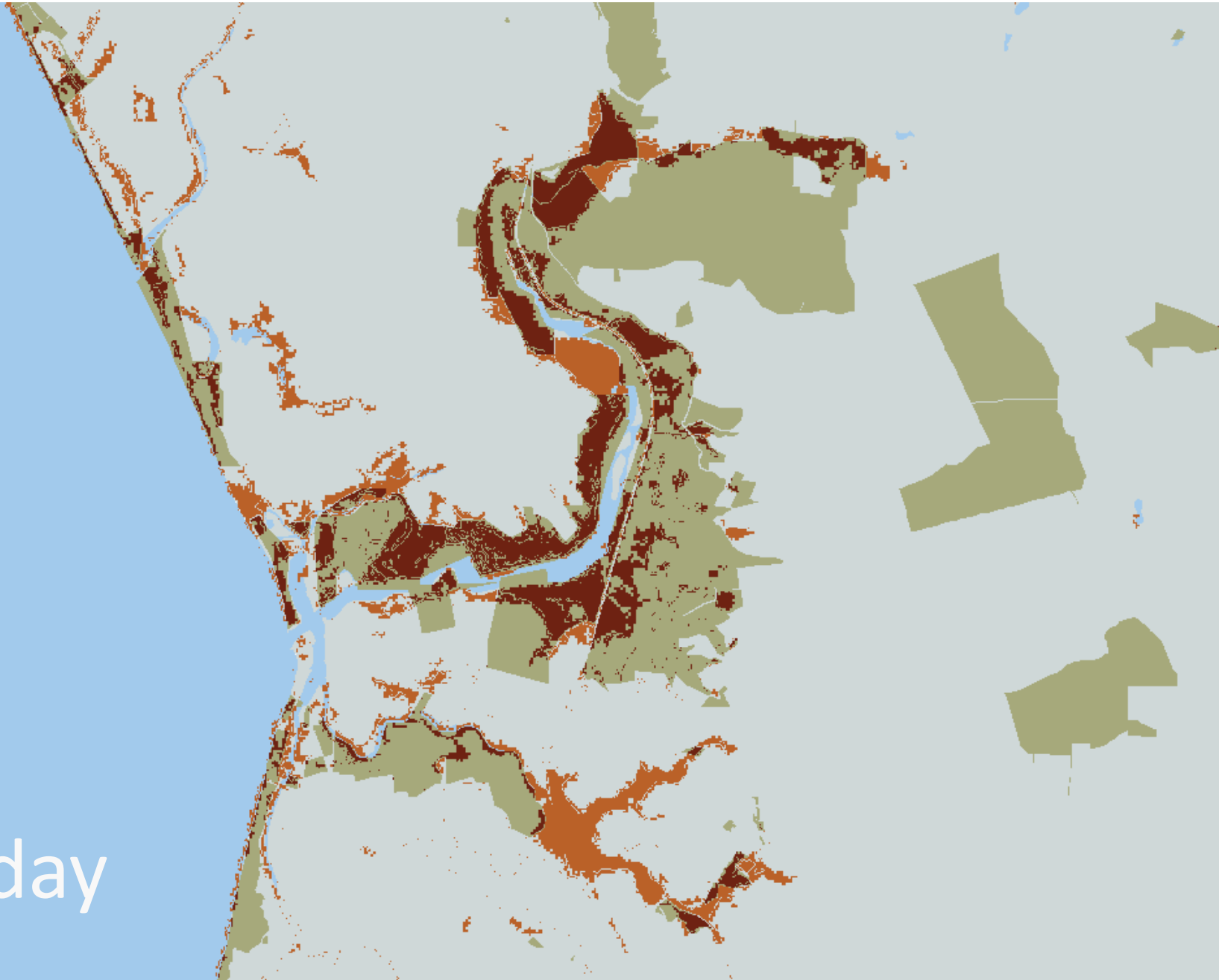
2060



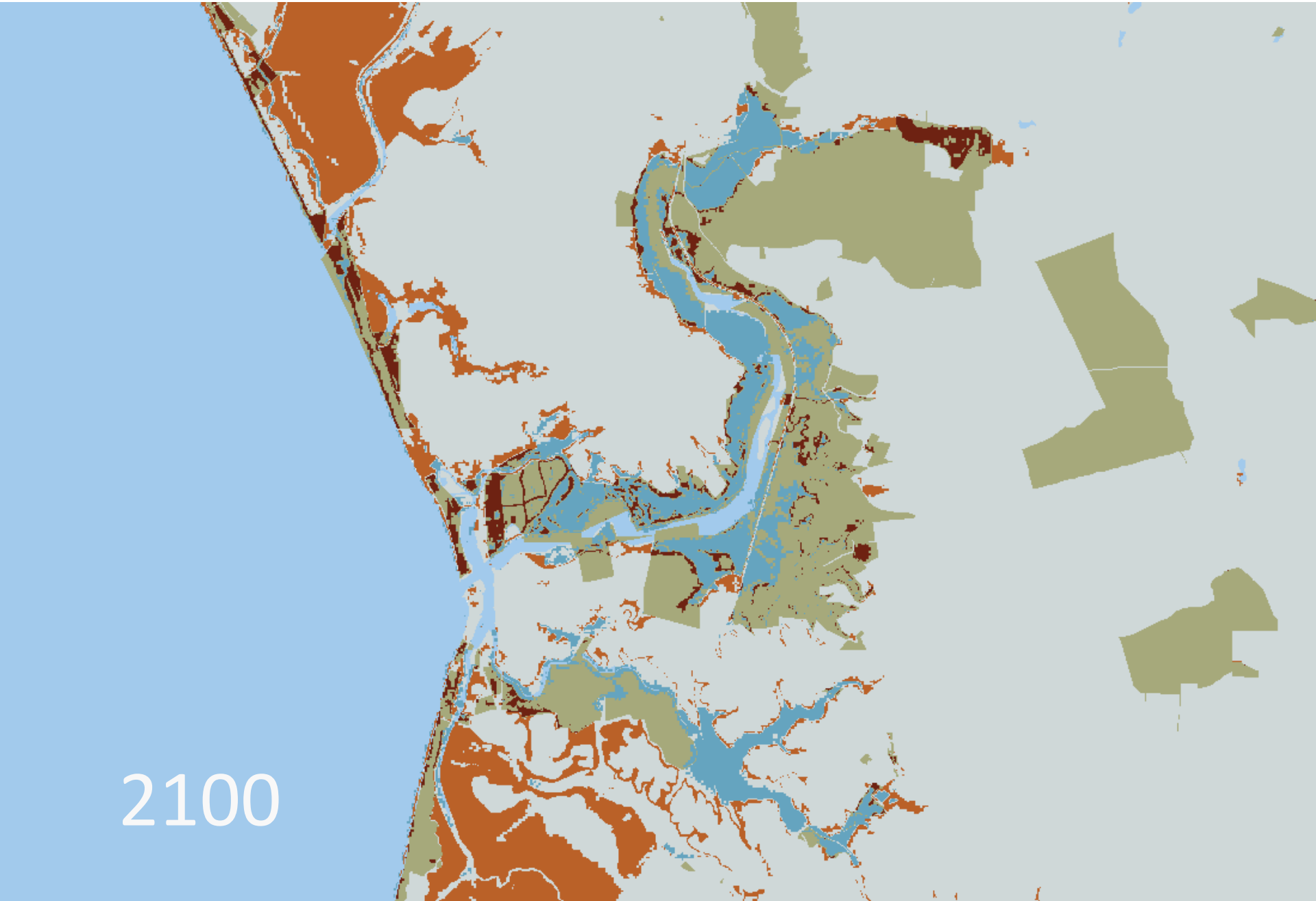
2100

California has lost 90% of coastal wetlands

Today



Remaining wetlands are vulnerable to sea level rise



Use the best science to guide protecting where coastal habitats are today, where they will be in the future, and habitat reclamation

