

**VENTURA COUNTY
PUBLIC HEALTH**

**HIV/AIDS SURVEILLANCE
FINAL REPORT**

JANUARY 2008 - DECEMBER 2008

PREPARED BY
VENTURA COUNTY PUBLIC HEALTH
THE HIV/AIDS CENTER
OFFICE OF HIV/AIDS SURVEILLANCE

VENTURA COUNTY PUBLIC HEALTH

This final HIV/AIDS Surveillance Report will discuss cases of HIV and AIDS reported to the Ventura County Public Health Department from January 2008 to December 2008. Ventura County Public Health has been conducting active AIDS surveillance since 1987. **HIV reporting began July 1, 2002.**

	VENTURA COUNTY HIV (NEW & RE-ASCERTAINED CASES ONLY)	VENTURA COUNTY AIDS	NON-RESIDENT CASES (HIV/AIDS)	CALIF. AIDS (11/08)	CALIF. HIV (9/08) NAME ONLY	USA AIDS (12/05)
ADULT CASES	390	1075		Data is currently only available by special request. www.dhs.ca.gov/AIDS		
ADULT DEATHS	10	590				
PED CASES	7	3				
PED DEATHS	0	2				
TOTALS	397	1078	469	151,921	31,386	984,155
DEATHS	10	592	146	85,907	901	525,442

- Cumulative data, numbers may change due to delays in reporting.
- Duplications with other counties and states periodically affect our numbers.
- Non-resident (Out of County) cases are diagnosed cases of HIV/AIDS reported by another county or state but who are now residing and receiving care in Ventura County.
- There were **thirty nine** new Non-Resident cases in 2008 compared to **thirty eight** reported in 2007.

HIV REPORTING

HIV reporting in California began July 1, 2002 by using a non-name code based system. April 17, 2006 brought about another change. The State of California implemented emergency regulations to begin reporting HIV by name as requested by the CDC (Center for Disease Control). We are only allowed to report patients who have had positive HIV tests after April 17th, 2006. These tests include all HIV tests indicative of HIV infection, including a viral load test. The State and the CDC currently only recognize cases which are identified by name, all other cases are not included and in fact have been deleted from the State's data base. We are currently and will be for the next 2-3 years attempting to re-ascertain previously identified cases of HIV infection. This is critical for a number of reasons:

- The financial resources provided to Ventura County for HIV/AIDS services is dependent upon the number of Living cases of HIV/AIDS reported.
- We need accurate data to determine strategies for education and prevention programs.
- At this point in time, due to the changes in the law we are obviously under reporting the number of HIV cases living and potentially receiving services in Ventura County. The only data which can be reported at this time are HIV cases which are new or have been re-ascertained by name.

VENTURA COUNTY HIV CASES		
HIV	2007 (name : new & re-ascertained))	2008 (name : new & re-ascertained))
#CASES REPORTED	40	46
#DEATHS	0	0
MALES	34 (85%)	43 (93%)
FEMALES	6 (15%)	3 (7%)
RACE		
WHITE	22 (55%)	22 (48%)
HISPANIC	15 (38%)	19 (41%)
BLACK	0	3 (7%)
AGE		
<19 YEARS	1 (3%)	0
20-29	9 (23%)	16 (35%)
30-39	10 (25%)	14 (30%)
40-49	15 (38%)	13 (28%)
>49	5 (15%)	3 (7%)
EXPOSURE CATEGORY		
MEN SEX WITH MEN	28 (70%)	37 (80%)
IDU	2 (5%)	3 (7%)
HETEROSEXUAL	5(13%)	1 (2%)
NO RISK ID(under investigation)	4 (10%)	3 (7%)
FACILITY OF DIAGNOSIS		
VCMC	20%	20 % (+ VCPH)
PRIMARY MD	30%	46%
LA FACILITY	35%	17%
VC PRIVATE HOSPITAL	3%	4%
OTHER	12%	13%

Summary:

- Primary age at diagnosis 20-29 yrs of age.
- Primary risk category is MSM (men having sex with men).
- 48 % white, 41 % Hispanic
- More diverse entry into the reporting system. As more cases have been re-ascertained, newer cases are being reporting from their primary care physicians, however, most HIV/AIDS care is then referred to the Ventura County Immunology Clinic.

VENTURA COUNTY AIDS CASES		
AIDS	2007	2008
#CASES REPORTED	22	19
#DEATHS	9	4
MALES	18(82%)	17 (89%)
FEMALES	4 (18%)	2 (11%)
RACE		
WHITE	13 (59%)	6 (32%)
HISPANIC	8 (36%)	13 (68%)
BLACK	0	0
AGE AT DIAGNOSIS		
<19 YEARS	0	0
20-29	3 (14%)	2 (11%)
30-39	4 (18%)	3 (16%)
40-49	10 (45%)	8 (42%)
>49	5 (23%)	6 (32%)
EXPOSURE CATEGORY		
MEN SEX WITH MEN	12(55%)	13 (68%)
IDU	2 (9%)	0
HETEROSEXUAL	3 (14%)	2 (11%)
NO RISK ID (under investigation)	3(14%)	3 (16%)
AIDS DEFINING ILLNESS		
PCP	1(5%)	2 (11%)
KS	0	0
CD4	17 (77%)	10 (53%)
OTHER OI'S (NO PCP)	4 (18%)	7 (37%)
FACILITY OF DIAGNOSIS		
VCMC	41%	32%
PRIMARY MD	18%	21%
LA FACILITY	28%	15%
VC PRIVATE HOSPITAL	4%	32%
OTHER	4%	0

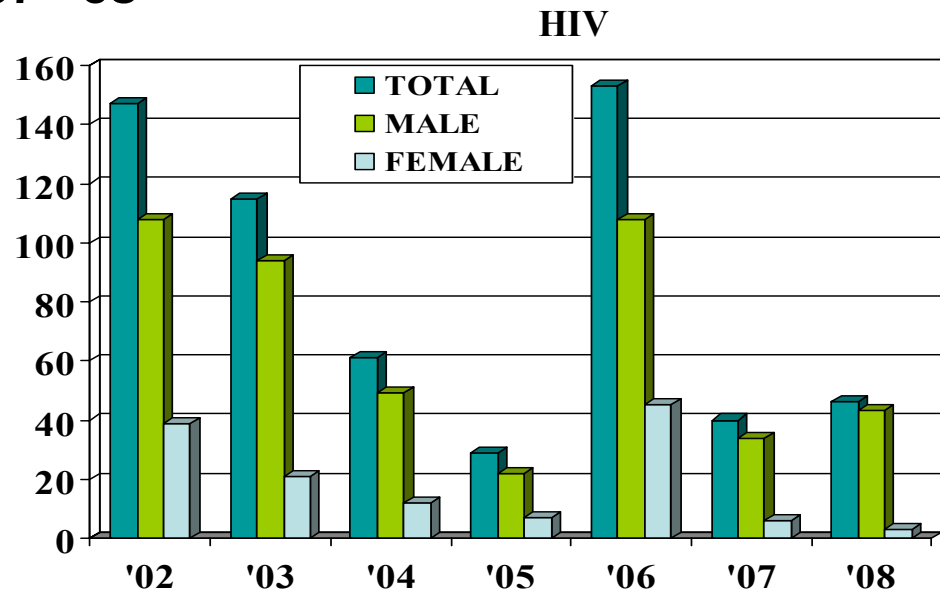
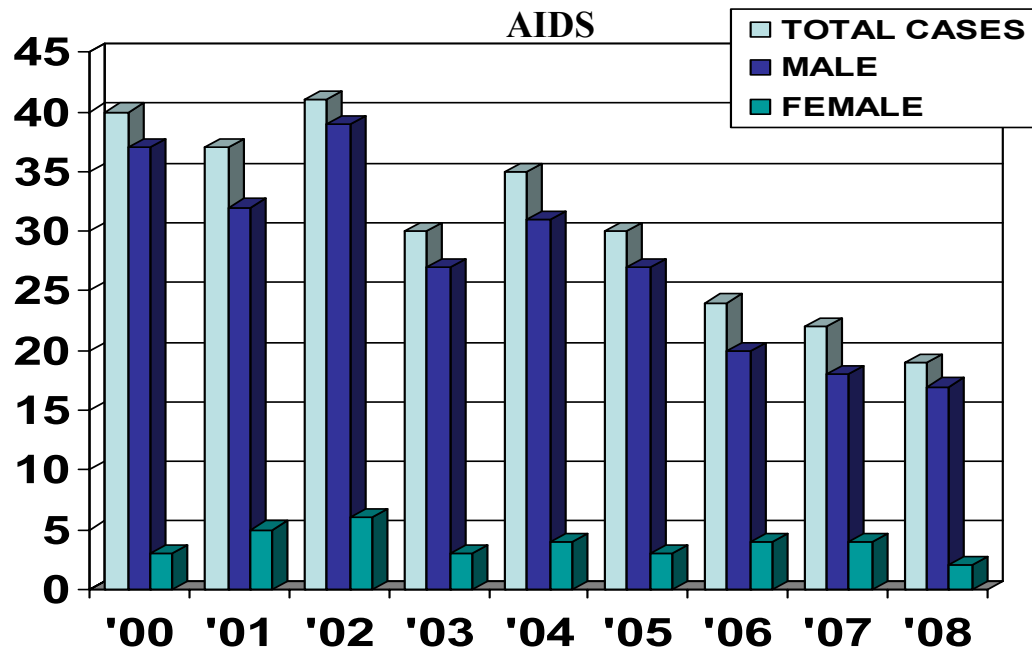
- **Fifteen out of nineteen (79%)** patients diagnosed with AIDS in the year 2008 were diagnosed with HIV and AIDS at the same time, compared to being diagnosed HIV+ and years later AIDS. The demographics of these individuals are as follows:
 - Average age was 43 years (range 25 – 66 years)
 - Primarily MSM
 - 5 white, 11 hispanic (reversal from 2007)
 - Ventura 3, Oxnard 4, Simi Valley 3, Moorpark/Pt Hue, T. O. Ojai, Santa Paula all one each.

VENTURA COUNTY PUBLIC HEALTH

HIV/AIDS Surveillance Report

2008

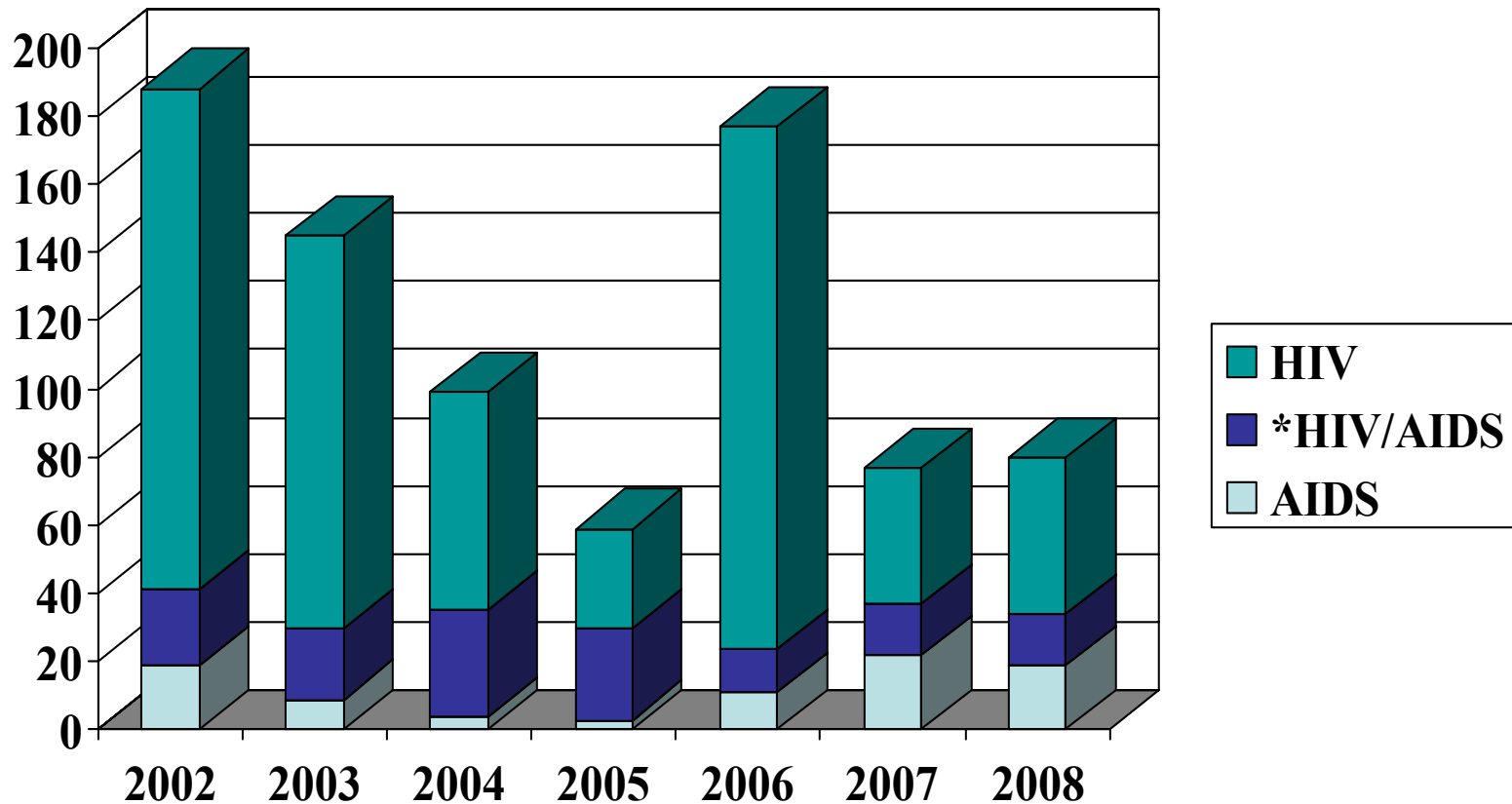
VENTURA COUNTY PUBLIC HEALTH HIV/AIDS STATISTICS



*HIV reporting has undergone significant changes in the last several years. It is important to understand the numbers have fluctuated dramatically due to the changes in the legislation.

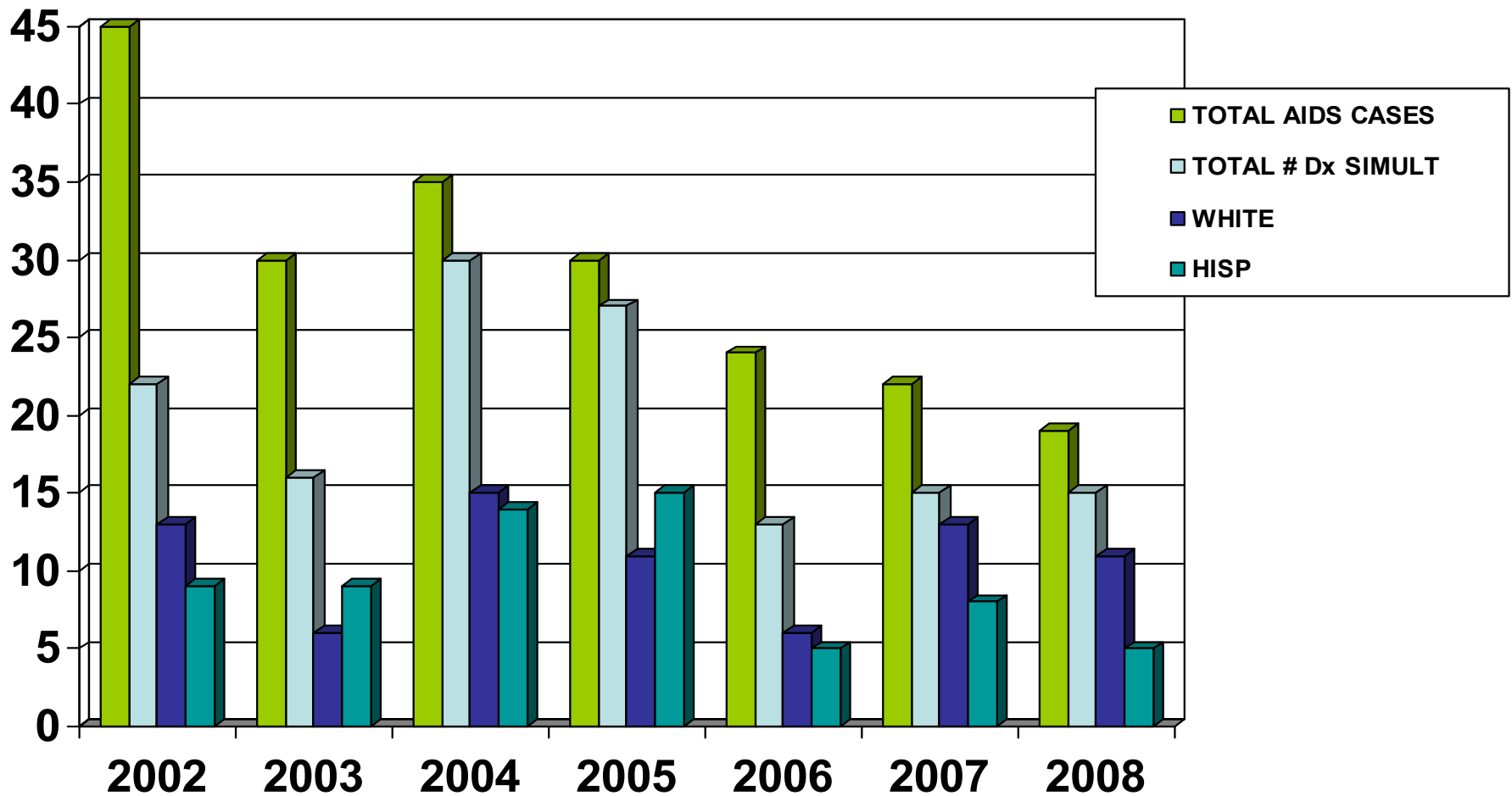
Please visit the State Office of AIDS website:
www.cdph.ca.gov/AIDS

VENTURA COUNTY PUBLIC HEALTH HIV AND AIDS CASES ENTERED PER YEAR

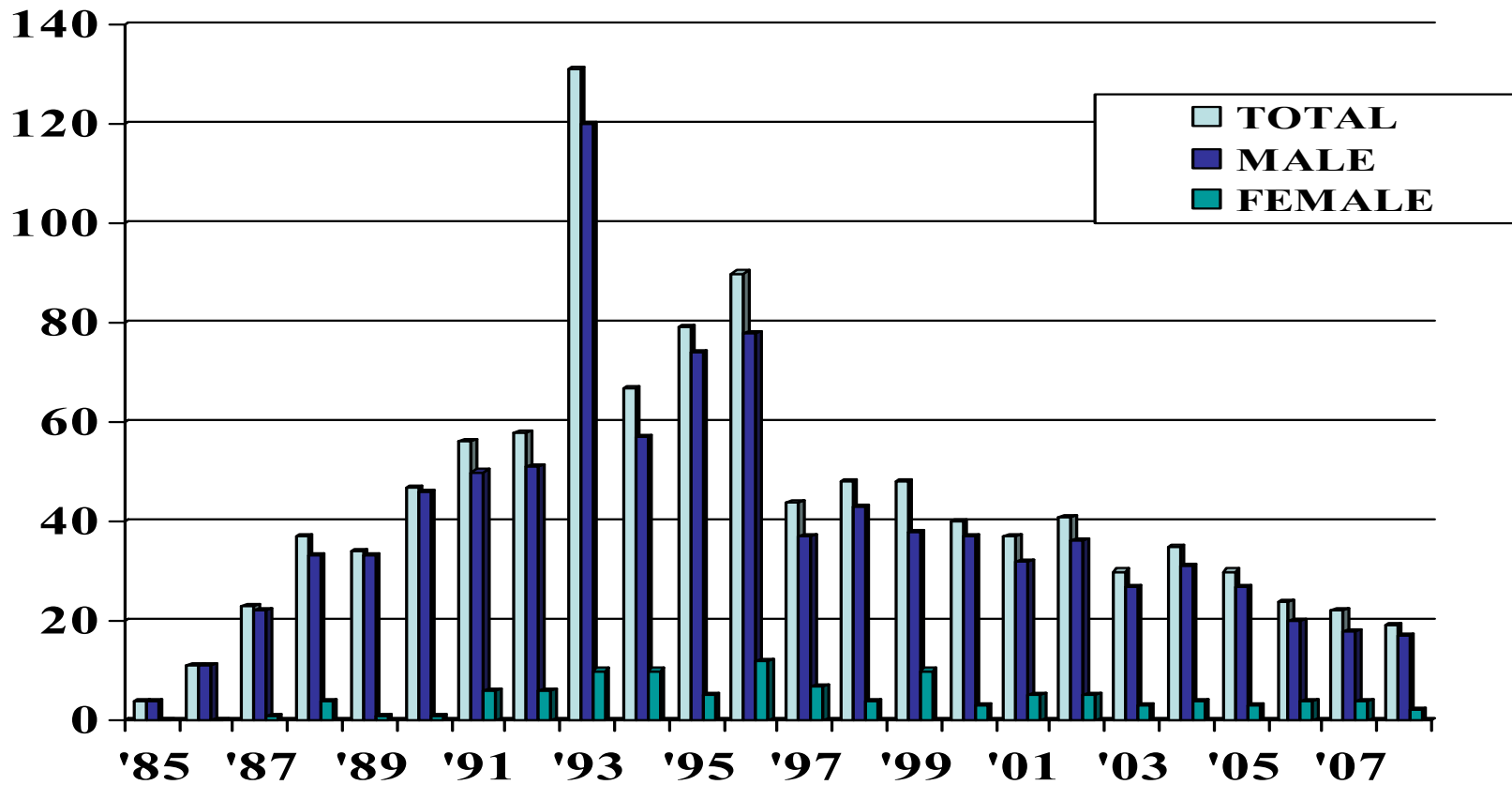


* These are cases which presented as HIV positive and an AIDS diagnosis at the same time.
(They are entered as AIDS cases.)

VENTURA COUNTY PUBLIC HEALTH HIV/AIDS DIAGNOSED SIMULTANEOUSLY

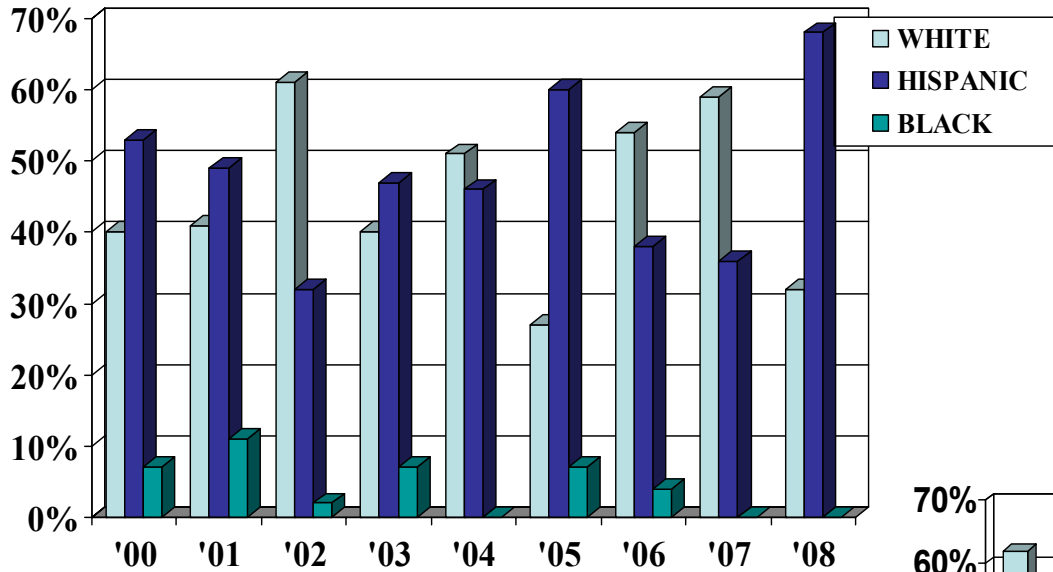


VENTURA COUNTY PUBLIC HEALTH REPORTED AIDS CASES

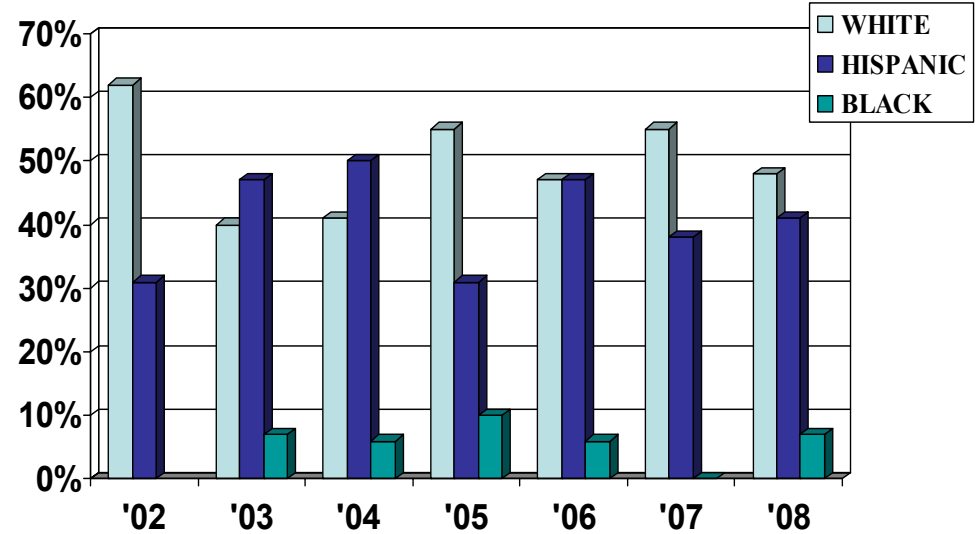


VENTURA COUNTY PUBLIC HEALTH HIV/AIDS STATISTICS BY RACE

AIDS

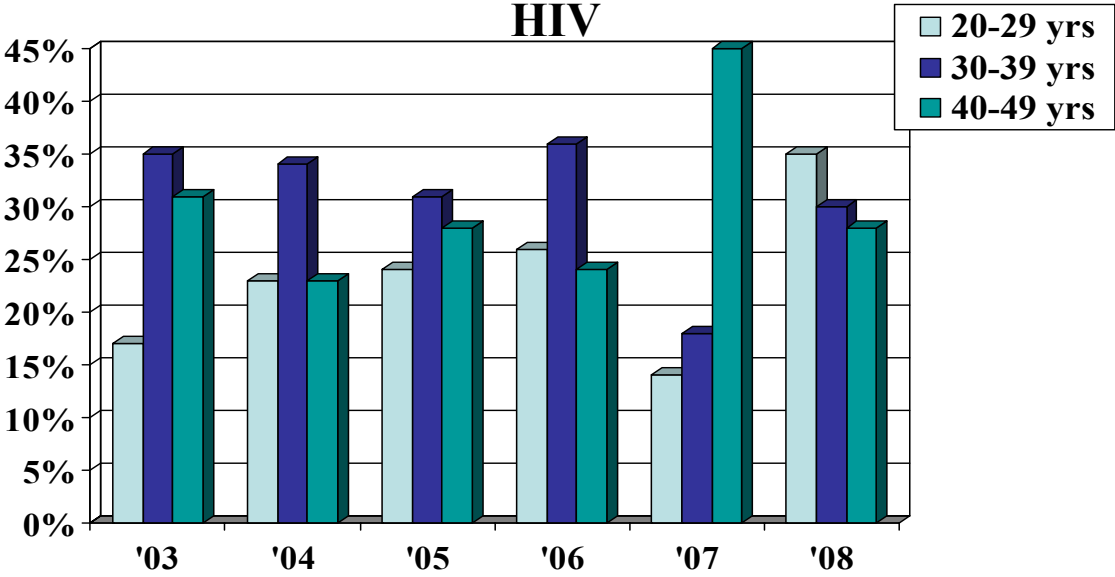
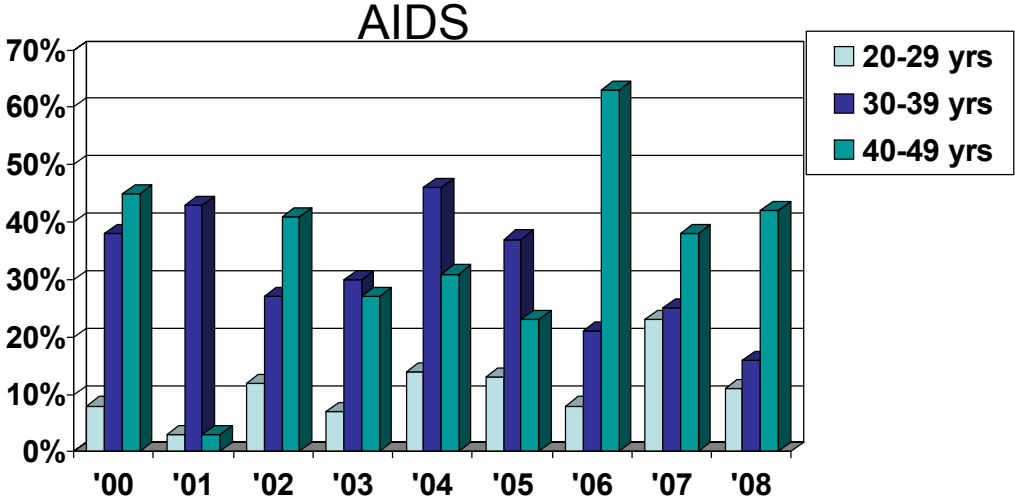


HIV



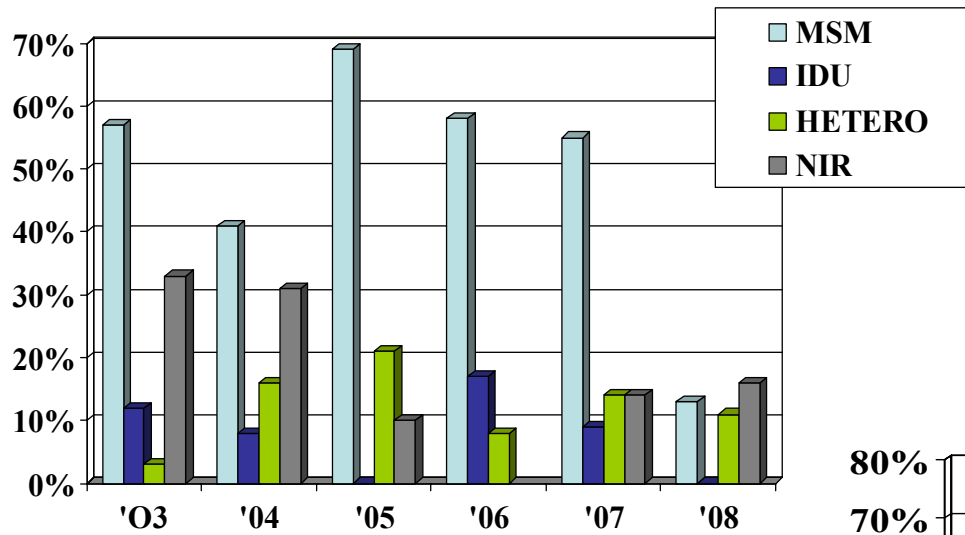
VENTURA COUNTY PUBLIC HEALTH

AGE AT DIAGNOSIS

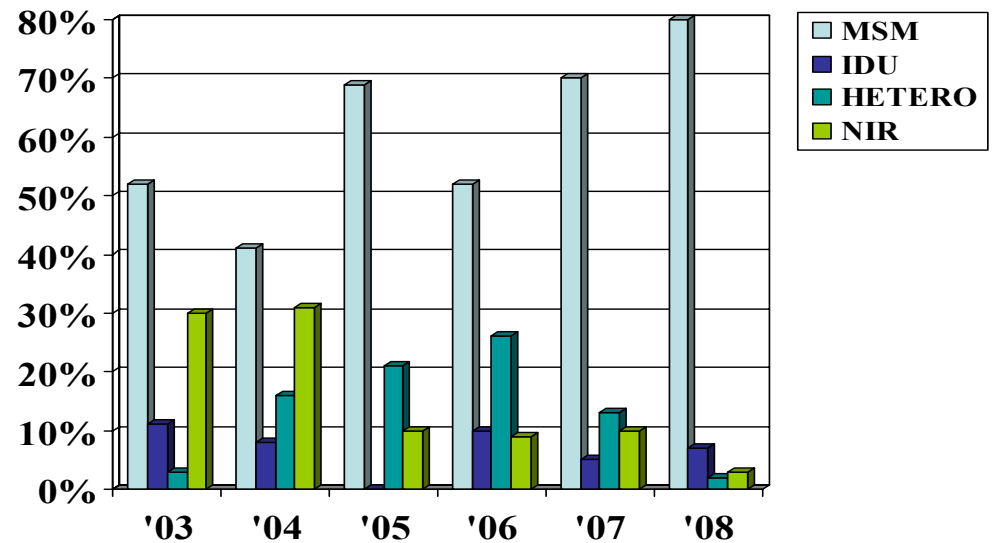


VENTURA COUNTY PUBLIC HEALTH HIV/AIDS MODE OF TRANSMISSION

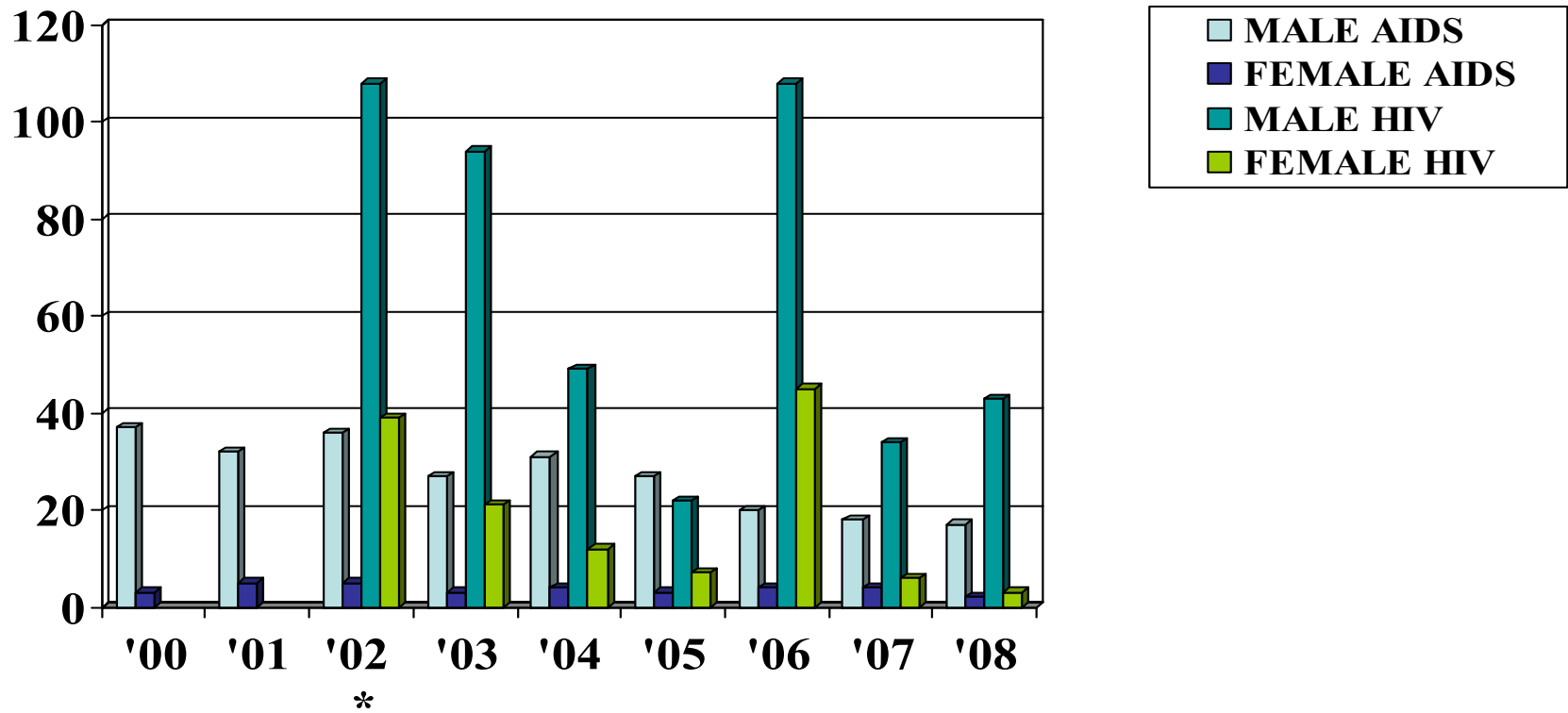
AIDS



HIV



VENTURA COUNTY PUBLIC HEALTH HIV/AIDS SURVEILLANCE REPORTED CASES OF HIV/AIDS BY GENDER



*(6 mos. FOR
HIV DATA)