

**VENTURA COUNTY
PUBLIC HEALTH**

**HIV/AIDS SURVEILLANCE
FINAL REPORT**

JANUARY 2005 - DECEMBER 2005

PREPARED BY
VENTURA COUNTY PUBLIC HEALTH
THE HIV/AIDS CENTER
OFFICE OF HIV/AIDS SURVEILLANCE

VENTURA COUNTY PUBLIC HEALTH

This final HIV/AIDS Surveillance Report will discuss cases of HIV and AIDS reported to the Ventura County Public Health Department from January 2005 to December 2005. Ventura County Public Health has been conducting active AIDS surveillance since 1987. **HIV reporting began July 1, 2002.**

CUMULATIVE DATA FOR HIV AND AIDS					
	VENTURA COUNTY HIV	VENTURA COUNTY AIDS	OUT OF CTY NON-RESIDENT CASES	CALIFORNIA AIDS (11/04)	USA AIDS (12/03)
ADULT CASES	302	995		135,060	920,566
ADULT DEATHS	5	554		78,637	518,568
PED CASES	7	3		647	9,419
PED DEATHS	0	2		387	5,492
TOTALS	309	998	338	135,707	929,985
DEATHS	5	556	143	79,024	524,060

- Cumulative data, numbers may change due to delays in reporting.
- Duplications with other counties and states periodically affect our numbers.
- Non-resident (Out of County) cases are diagnosed cases of HIV/AIDS reported by another county or state but who are now residing and receiving care in Ventura County.
- There were **twenty one** new Non-Resident cases in 2005 compared to **thirty four** reported in 2004.

RESIDENCE AT TIME OF DIAGNOSIS		
2005	HIV	AIDS
OXNARD	35%	50%
VENTURA	14%	10%
THOUSAND OAKS	14%	10%
CAMARILLO	14%	0
SIMI VALLEY	10%	2%
SANTA PAULA	0	6%
NEWBURY PARK	6%	6%
PT HUENEME	6%	2%

VENTURA COUNTY AIDS CASES		
AIDS	2005	2004
#CASES REPORTED	30	35
#DEATHS	12	13
MALES	27 (90%)	31 (86%)
FEMALES	3 (10%)	4 (14%)
RACE		
WHITE	8 (27%)	18 (51%)
HISPANIC	18 (60%)	16 (46%)
BLACK	2 (7%)	0
AGE AT DIAGNOSIS		
<19 YEARS	3 (3%)	0
20-29	4 (13%)	5 (14%)
30-39	11 (37%)	16 (46%)
40-49	7 (23%)	11 (31%)
>49	7 (23%)	3 (9%)
EXPOSURE CATEGORY		
MEN SEX WITH MEN	20(67%)	20 (57%)
IDU	0	2 (6%)
HETEROSEXUAL	3 (10%)	4 (11%)
NO RISK ID (under investigation)	7(23%)	9 (26%)
AIDS DEFINING ILLNESS		
PCP	3(10%)	6 (17%)
KS	1 (3%)	0
CD4	14 (47%)	21 (60%)
OTHER OI'S (NO PCP)	12 (40%)	8 (23%)
FACILITY OF DIAGNOSIS		
VCMC	38%	46%
PRIMARY MD	33%	26%
LA FACILITY	6%	11%
VC PRIVATE HOSPITAL	17%	11%
OTHER	6%	6%

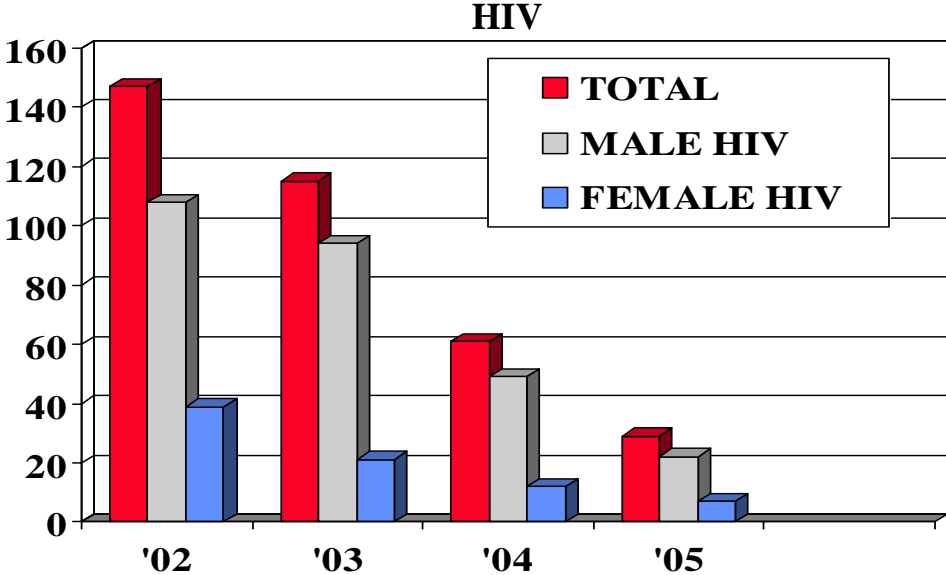
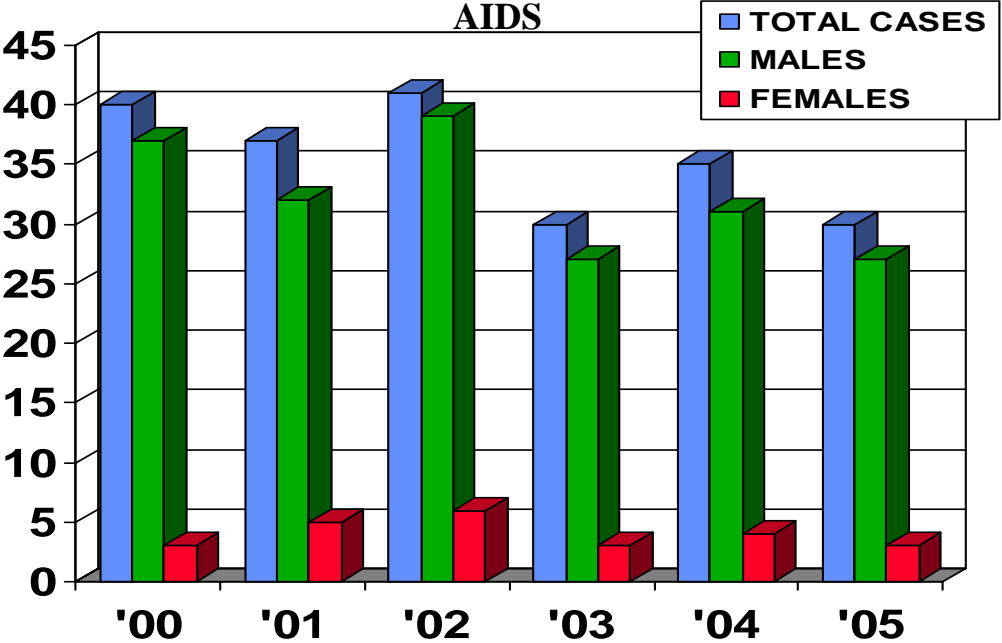
- **Ninety percent** of the patients diagnosed with AIDS in the year 2005 were diagnosed with HIV and AIDS at the same time, compared to being diagnosed HIV+ and years later AIDS. This is well above the national average.

VENTURA COUNTY HIV CASES		
HIV	2005	2004
#CASES REPORTED	29	64
#DEATHS	0	1
MALES	22 (76%)	49 (77%)
FEMALES	7 (24%)	12 (23%)
RACE		
WHITE	16 (55%)	26 (41%)
HISPANIC	9 (31%)	32 (50%)
BLACK	3 (10%)	4 (6%)
AGE		
<19 YEARS	1 (3%)	6 (10%)
20-29	7 (24%)	15 (23%)
30-39	9 (31%)	22 (34%)
40-49	8 (28%)	15 (23%)
>49	4 (14%)	6 (9%)
EXPOSURE CATEGORY		
MEN SEX WITH MEN	20 (69%)	25 (41%)
IDU	0	5 (8%)
HETEROSEXUAL	6 (21%)	10 (16%)
NO RISK ID (under investigation)	3 (10%)	19 (31%)
FACILITY OF DIAGNOSIS		
VCMC	33%	34%
PRIMARY MD	61%	44%
LA FACILITY	3%	13%
VC PRIVATE HOSPITAL	3%	8%
OTHER	0	1%

HIV reporting began July 1, 2002.. The number of retro-reportable cases is diminishing.

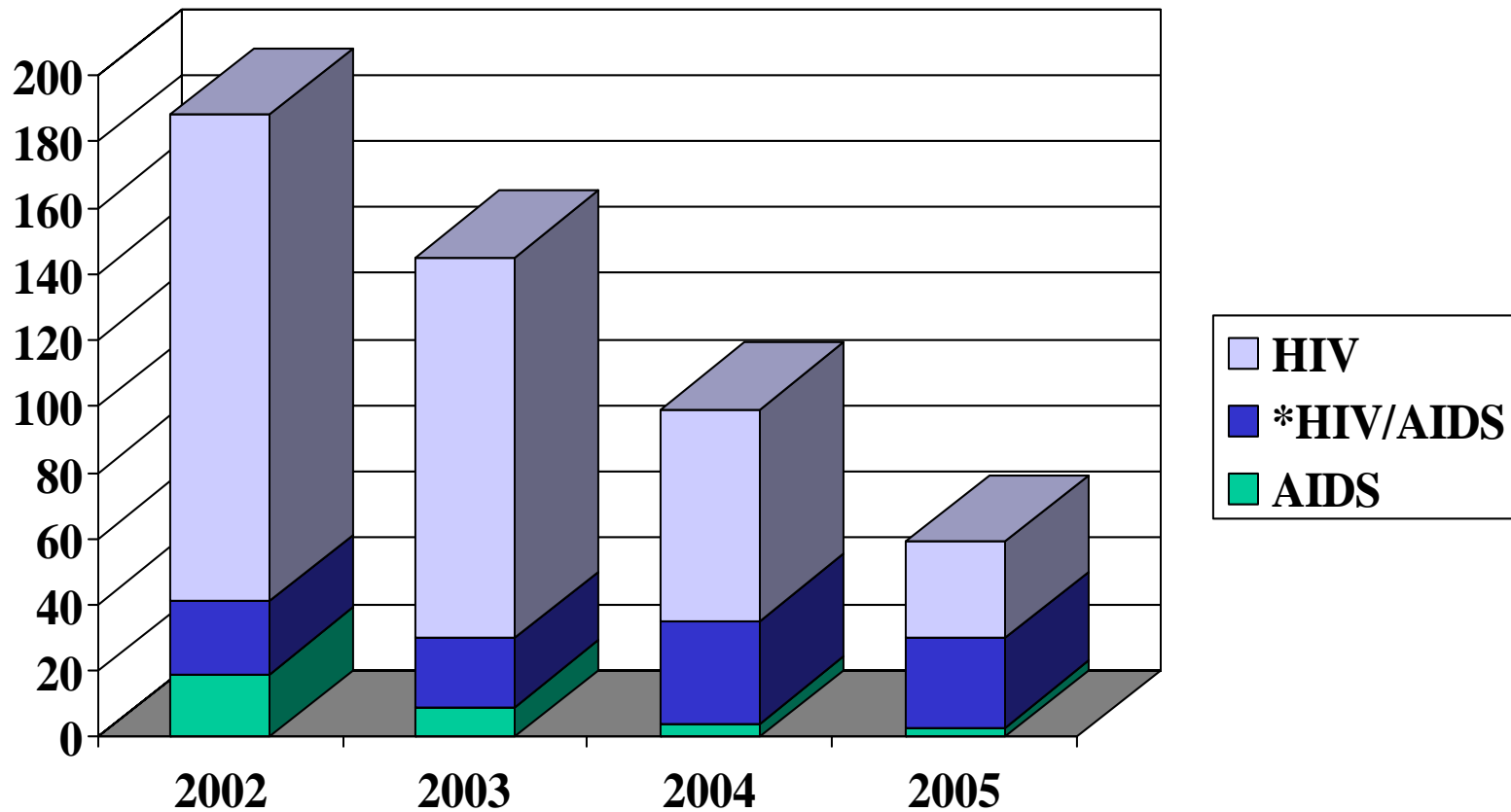
COMPARISON POINTS FOR HIV AND AIDS IN VENTURA COUNTY		
THIS TABLE PROVIDES A SIDE BY SIDE COMPARISON OF THE <u>HIV and AIDS CASES ENTERED IN '2005</u>		
JANUARY 2005– DECEMBER 2005		
	HIV CASES	AIDS CASES
AGE	30-39 (31%)	30-39 (37%)
RACE/ETHNICITY	55 % WHITE 31% HISPANIC	60% HISPANIC 27 % WHITE
MALE	76%	90%
FEMALE	24%	10%
EXPOSURE CATEGORY	69% MSM (Men sex w/ men) 21% Hetero contact	67% MSM

VENTURA COUNTY PUBLIC HEALTH HIV/AIDS STATISTICS



***THE DRAMATIC DECLINE IN THE NUMBER OF HIV CASES BEING REPORTED IS DUE TO THE COMPLETION OR NEAR COMPLETION OF ENTERING RETRO-ACTIVE CASES.**

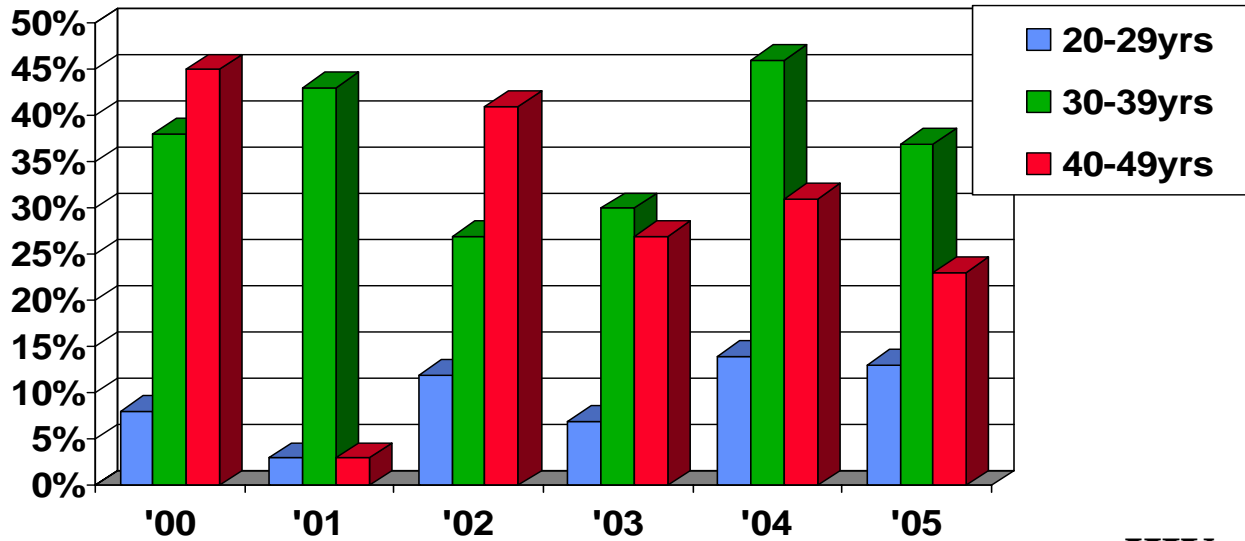
VENTURA COUNTY PUBLIC HEALTH HIV AND AIDS CASES ENTERED PER YEAR



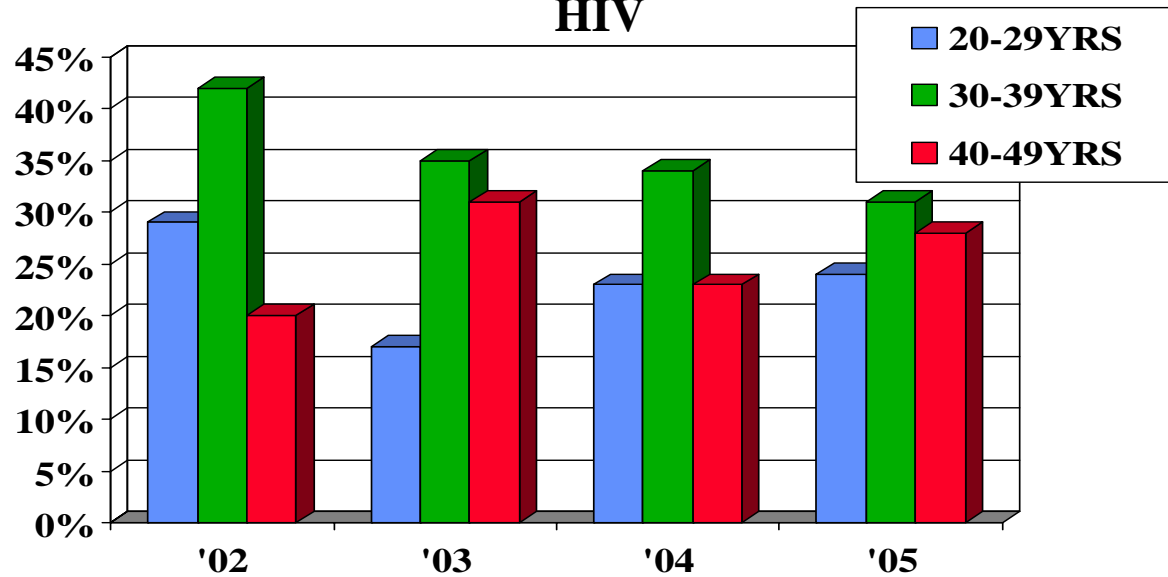
* These are cases which presented as HIV positive and an AIDS diagnosis at the same time.
(They are entered as AIDS cases.)

VENTURA COUNTY PUBLIC HEALTH AGE AT DIAGNOSIS

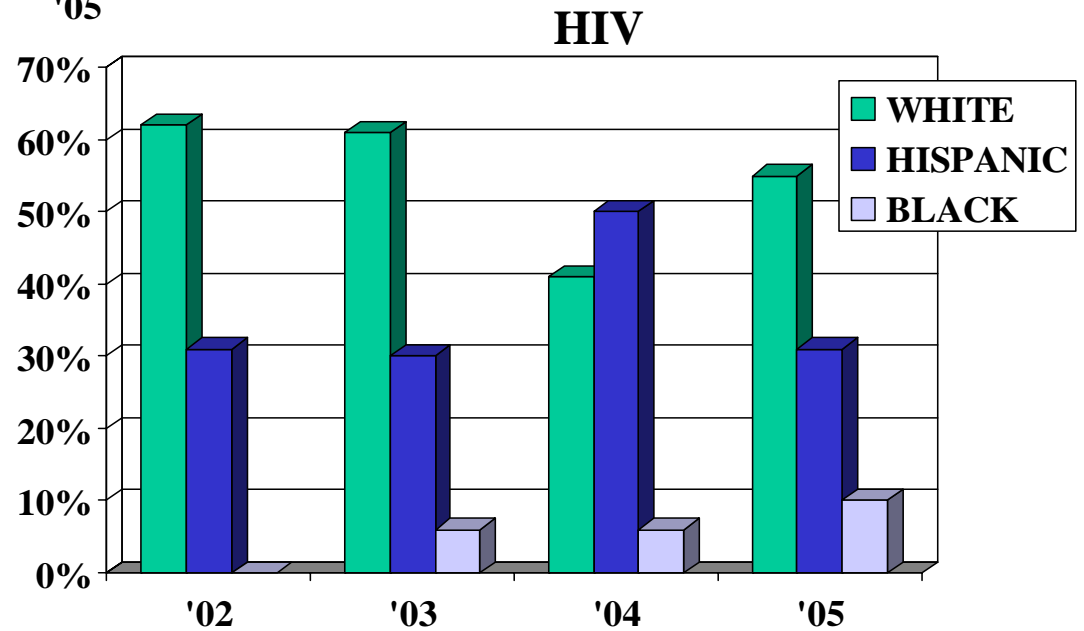
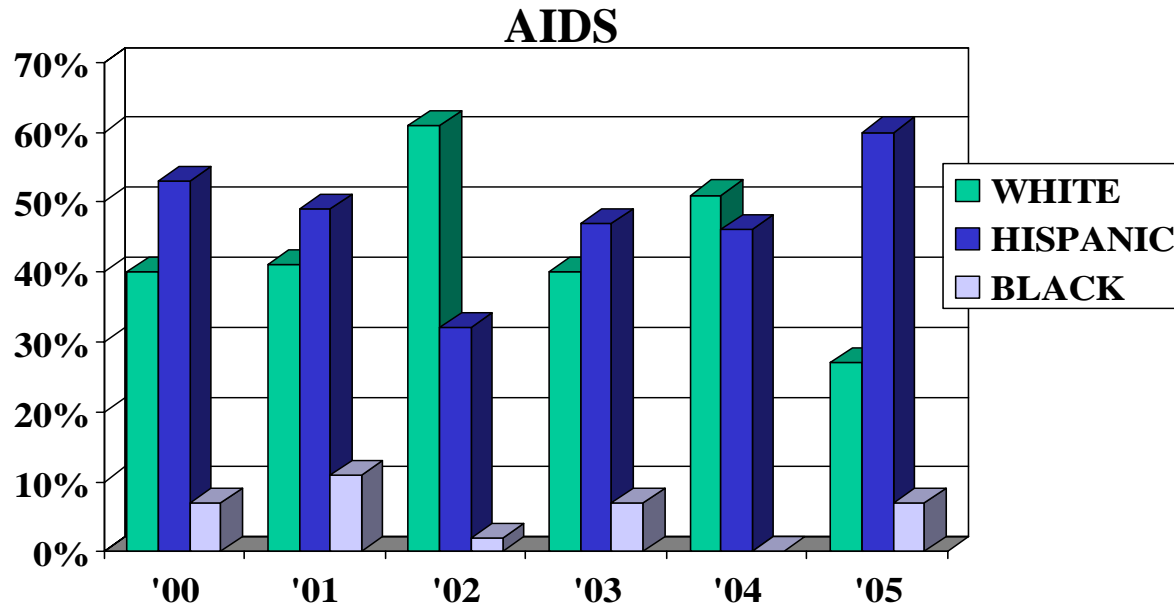
AIDS



HIV



VENTURA COUNTY PUBLIC HEALTH CASES BY RACE



VENTURA COUNTY PUBLIC HEALTH MODE OF TRANSMISSION

