



# Integrated Pest Management

## Pesticide Free





# Where Is Oak Park?



Oak Park is located in the Conejo Valley, north from Malibu and Agoura Hills and is part of Ventura County.



# Oak Park Unified School District

Brookside Elementary



Red Oak Elementary



Oak Park High



Oak Hills Elementary



Medea Creek Middle



Oak View High and OPIS





# Oak Park Unified School District

- Enrollment: approx. 4500 Students
- Located: on 100 Acres
- Landscape Crew: 4 Grounds Workers





## Moral Imperatives

*It is important to serve as community leaders in the areas of environmental awareness and sensitivity. In addition to incorporating environmental education into its instructional program, the District is working to serve as an example for its students and community.*

## Board Policy

*The Oak Park Unified School District has a Pesticide Free Policy that does not allow for the use of toxic pesticides unless an EMERGENCY situation exists.*



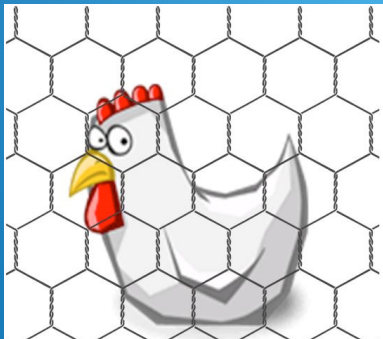


OLD



Old vs New

New



Construction

Tunnel Fill drowns the gopher or forces him out of his gopher tunnel and burrow system where you dispatch the gopher when he surfaces or relocate to another area.

# Rat Bait Boxes

Old vs New

OLD



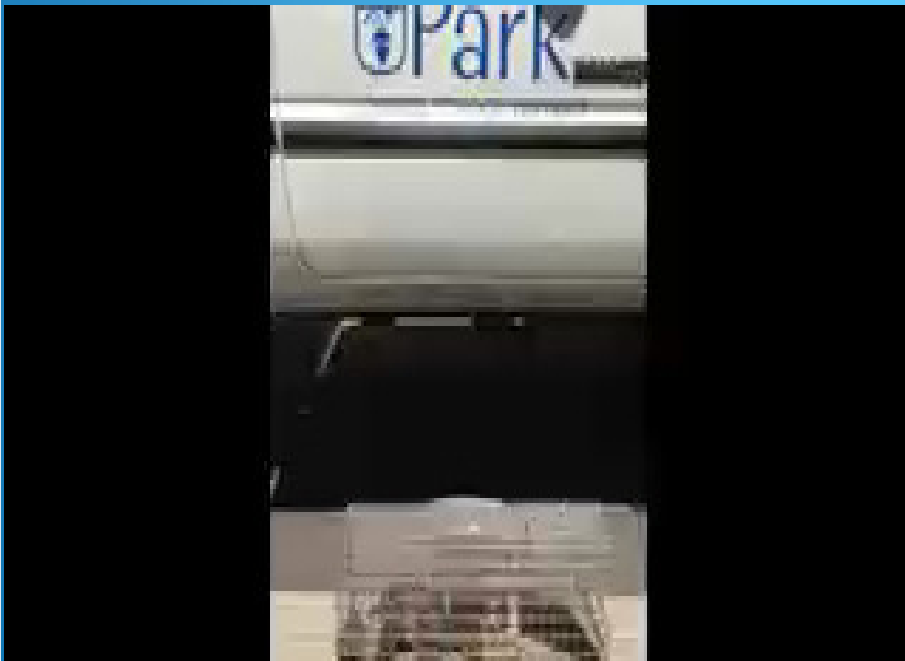
6 Campuses = 80 Boxes

New





# Trap and Release



# Bug Spray

Old vs New

OLD



New

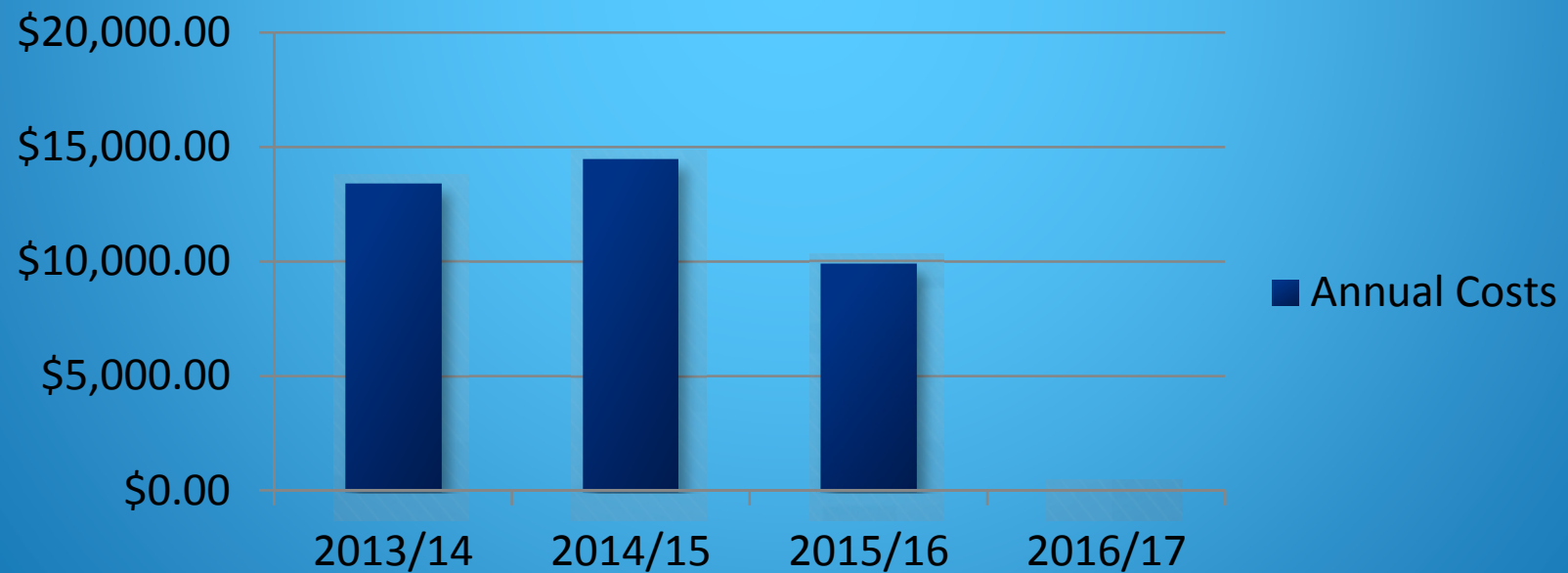


Essential Oils, Food Grade Diatomaceous Earth, Cinnamon Sticks



# Vendor Fees

## Annual Costs





## New Methods

- Housekeeping
- Seal Openings
- Repair Leaks
- Remove Items Next to Buildings
- Close Doors
- Trap and Release

## Past Practices

- Pesticides
- Fumitoxins



## Barn Owl Boxes



Bats eat insects by the hundreds, consuming about half their body weight in bugs each day.



Barn Owls eat mostly small mammals, particularly rats, mice, voles, lemmings, and other rodents; also shrews, and rabbits.

## Bat Boxes



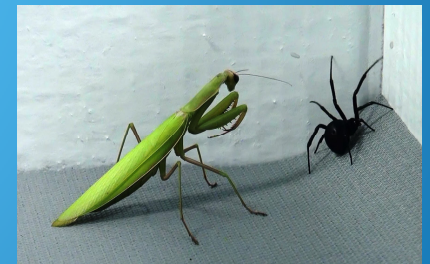
# Good Pests

Invite Good  
Insects

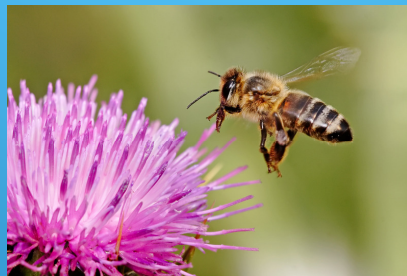
- Lady Bugs – eats aphids and white flies



- Praying Mantis – eats most insects in it's path



- Bees – pollination





# Tips

## Lids and Locks on Bins





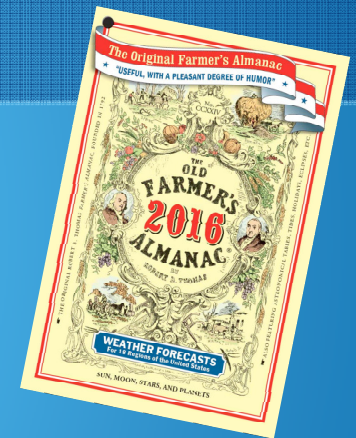
# Tips – Companion Planting

- There are several herbs that are believed to repel mice. Mint, pennyroyal, garlic and onion are just a few. Try planting them in your garden.
- Mice are also repelled by camphor, lavender, and wormwood. You can find dried lavender in health food stores and some garden centers.



# Farmers Almanac – Since 1792

## Back in Fashion



- In the garden, avoid using straw as mulch or any fluffy mulch that provides nesting places.
- To protect bulbs, cage them or surround the bulb with crushed gravel in the planting hole.
- Wrap tree trunks with tree wrap or hardware cloth at their base.

Go Natural

