

South Branch Arroyo Conejo Multi-Use Pathway Plan



Casa Conejo Municipal Advisory Committee

July 16, 2014



Introduction

- Consultant Team:
 - Questa Engineering & Rincon Consultants
- Project Sponsors:
 - Ventura County
 - Southern California Association of Governments (SCAG)
- Stakeholders/Partners:
 - Casa Conejo MAC
 - City of Thousand Oaks
 - Ventura County Watershed Protection District
 - Conejo Recreation & Park District
 - Conejo Valley Unified School District
 - Community

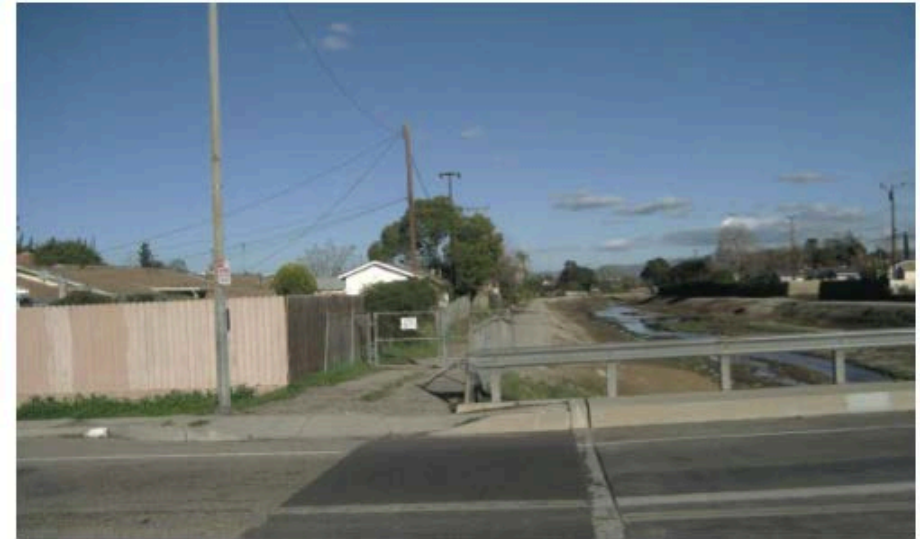


Figure 3 – Before: Photo of Channel from Wendy Bridge Looking East

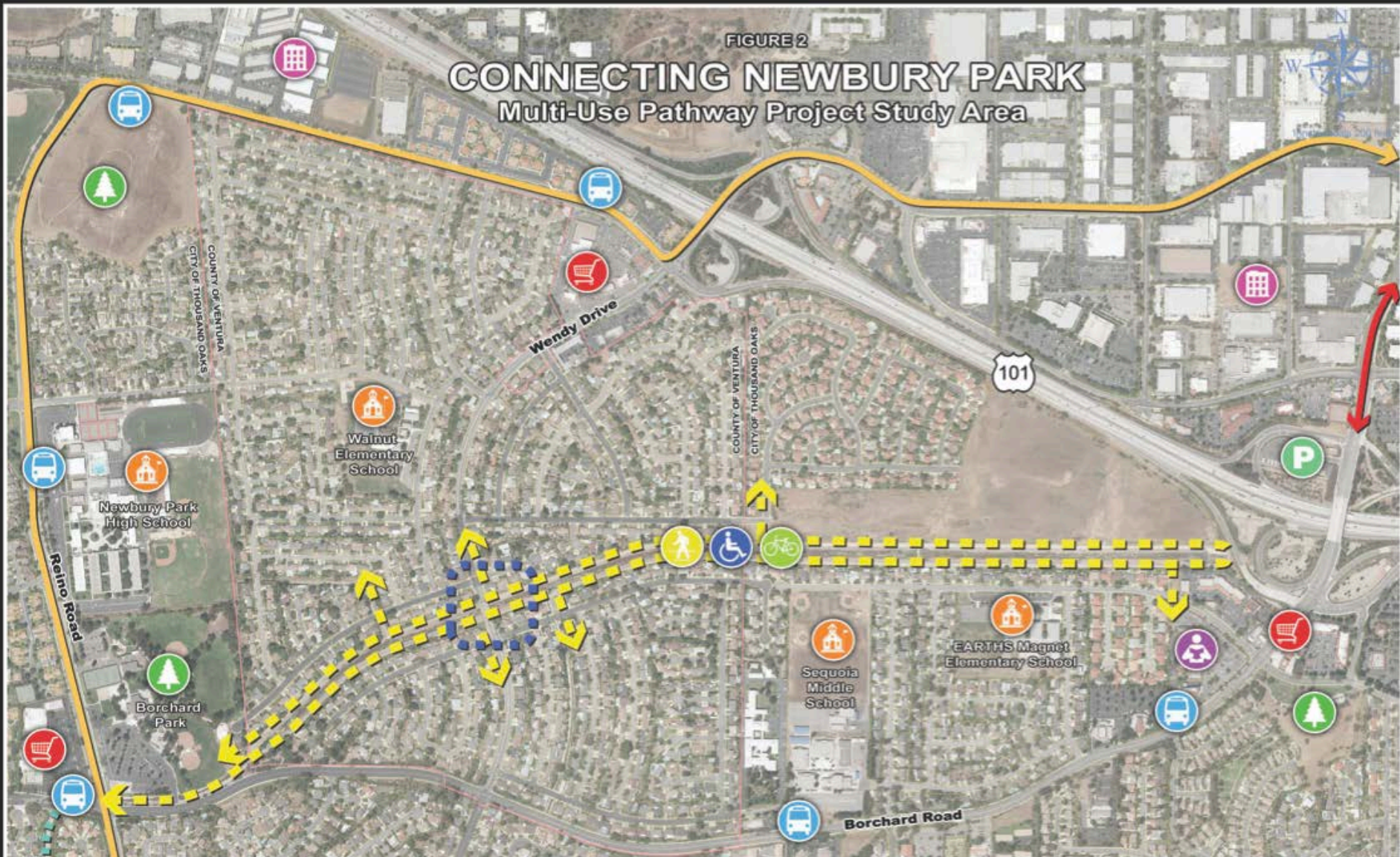


Figure 4 - After: Rendering of Channel from Wendy Bridge Looking East

FIGURE 2

CONNECTING NEWBURY PARK

Multi-Use Pathway Project Study Area



LEGEND

 Shopping Center	 Business Center	 Park and Ride	 Proposed Multi-Use Pathway
 School	 Bus Stop	 Existing Class III Bike Path	 Potential Future Multi-Use Pathway Extension
 Park	 Library	 Existing Class I Bike Path	 Potential Undercrossing at Wendy Bridge

Background

- The study area is between Highway 101 and Borchard Community Park
- 1-1/2 mile long flood control channel, with maintenance access roads on both sides of the channel
- Wendy Drive and Borchard Rd. are nearest streets: Wendy bisects the channel
- A survey was conducted in 2010 to get community input

Community Input

2010 Resident Survey

- November 2010 Survey, 34 responses:
 - 78% supported trail along Arroyo Conejo
 - Destinations include shopping center, library, schools and community center
 - 76% believe trail would improve safe school access
 - 64% believe trail would increase property values
 - 35% believe trail would increase crime
 - 41% believe trail would increase graffiti

Study Purpose

The Plan will:

- Evaluate the feasibility of constructing a trail on the channel maintenance road
- Assist in identifying needs, costs, environmental issues and public concerns
- When completed, the trail can help reduce local automobile congestion and increase mobility by enabling bicycle, pedestrian, and ADA access to neighborhood schools, parks and shopping

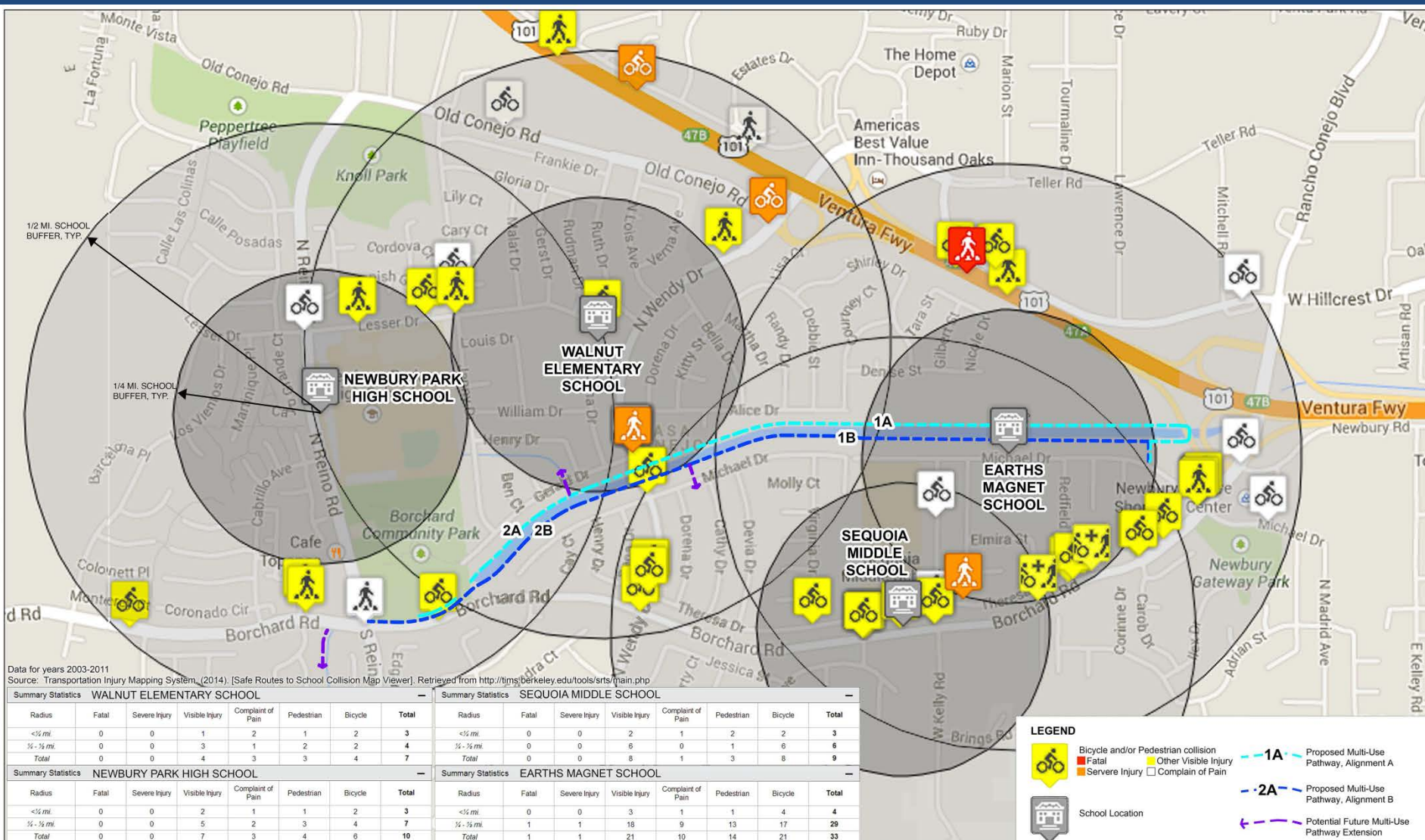
Tasks

- Existing conditions inventory
 - Community setting
 - Environmental issues
- Preliminary design recommendations
- Phasing, funding, and implementation options
 - Trail costs
 - Funding opportunities
 - Environmental and engineering issues
 - Design and operating guidelines

Existing Conditions

- Traffic and Bicycle/Pedestrian Safety
- Biological Resources
- Hydrology and Flooding
- Study Segments

Bicycle/Pedestrian Safety



Data for years 2003-2011
 Source: Transportation Injury Mapping System (2014). [Safe Routes to School Collision Map Viewer]. Retrieved from <http://tims.berkeley.edu/tools/srts/main.php>

Summary Statistics WALNUT ELEMENTARY SCHOOL							
Radius	Fatal	Severe Injury	Visible Injury	Complaint of Pain	Pedestrian	Bicycle	Total
<1/4 mi.	0	0	1	2	1	2	3
1/4 - 1/2 mi.	0	0	3	1	2	2	4
Total	0	0	4	3	3	4	7

Summary Statistics NEWBURY PARK HIGH SCHOOL							
Radius	Fatal	Severe Injury	Visible Injury	Complaint of Pain	Pedestrian	Bicycle	Total
<1/4 mi.	0	0	2	1	1	2	3
1/4 - 1/2 mi.	0	0	5	2	3	4	7
Total	0	0	7	3	4	6	10

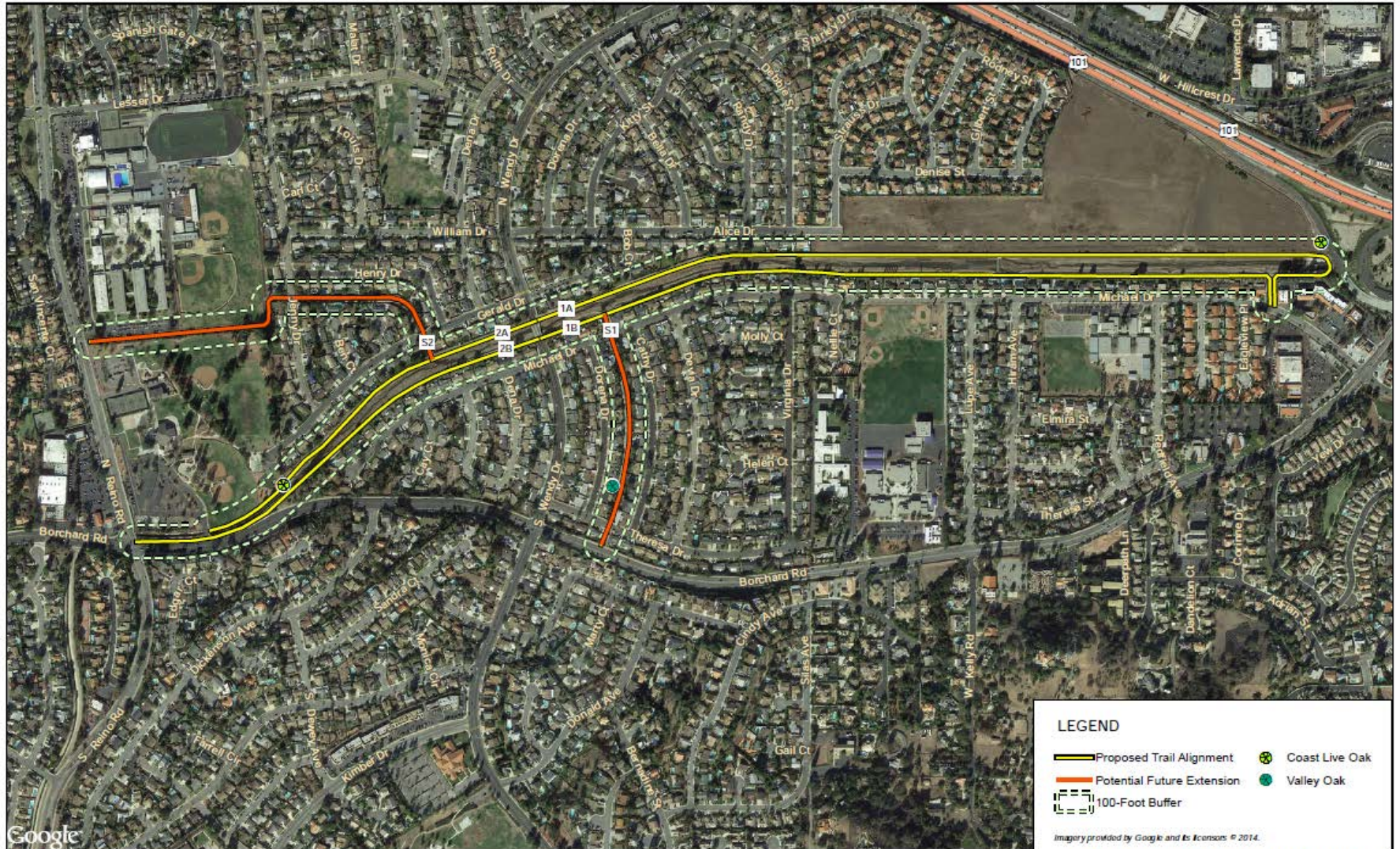
Summary Statistics SEQUOIA MIDDLE SCHOOL							
Radius	Fatal	Severe Injury	Visible Injury	Complaint of Pain	Pedestrian	Bicycle	Total
<1/4 mi.	0	0	2	1	2	2	3
1/4 - 1/2 mi.	0	0	6	0	1	6	6
Total	0	0	8	1	3	8	9

Summary Statistics EARTHS MAGNET SCHOOL							
Radius	Fatal	Severe Injury	Visible Injury	Complaint of Pain	Pedestrian	Bicycle	Total
<1/4 mi.	0	0	3	1	1	4	4
1/4 - 1/2 mi.	1	1	16	9	13	17	29
Total	1	1	21	10	14	21	33

LEGEND

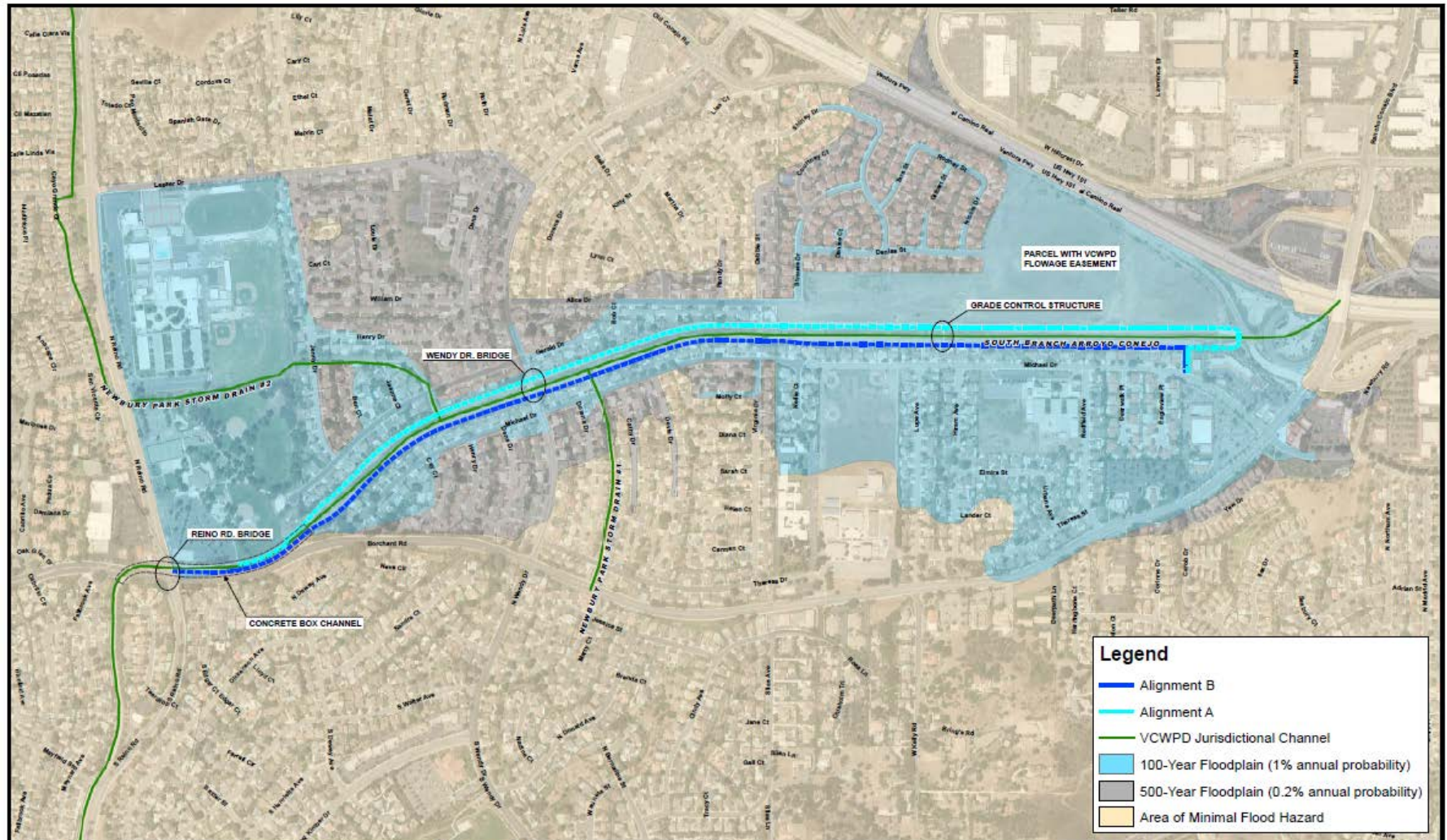
- Bicycle and/or Pedestrian collision
- Fatal
- Severe Injury
- Other Visible Injury
- Complain of Pain
- Proposed Multi-Use Pathway, Alignment A
- Proposed Multi-Use Pathway, Alignment B
- School Location
- Potential Future Multi-Use Pathway Extension

Biological Resources



Google

Hydrology and Flooding



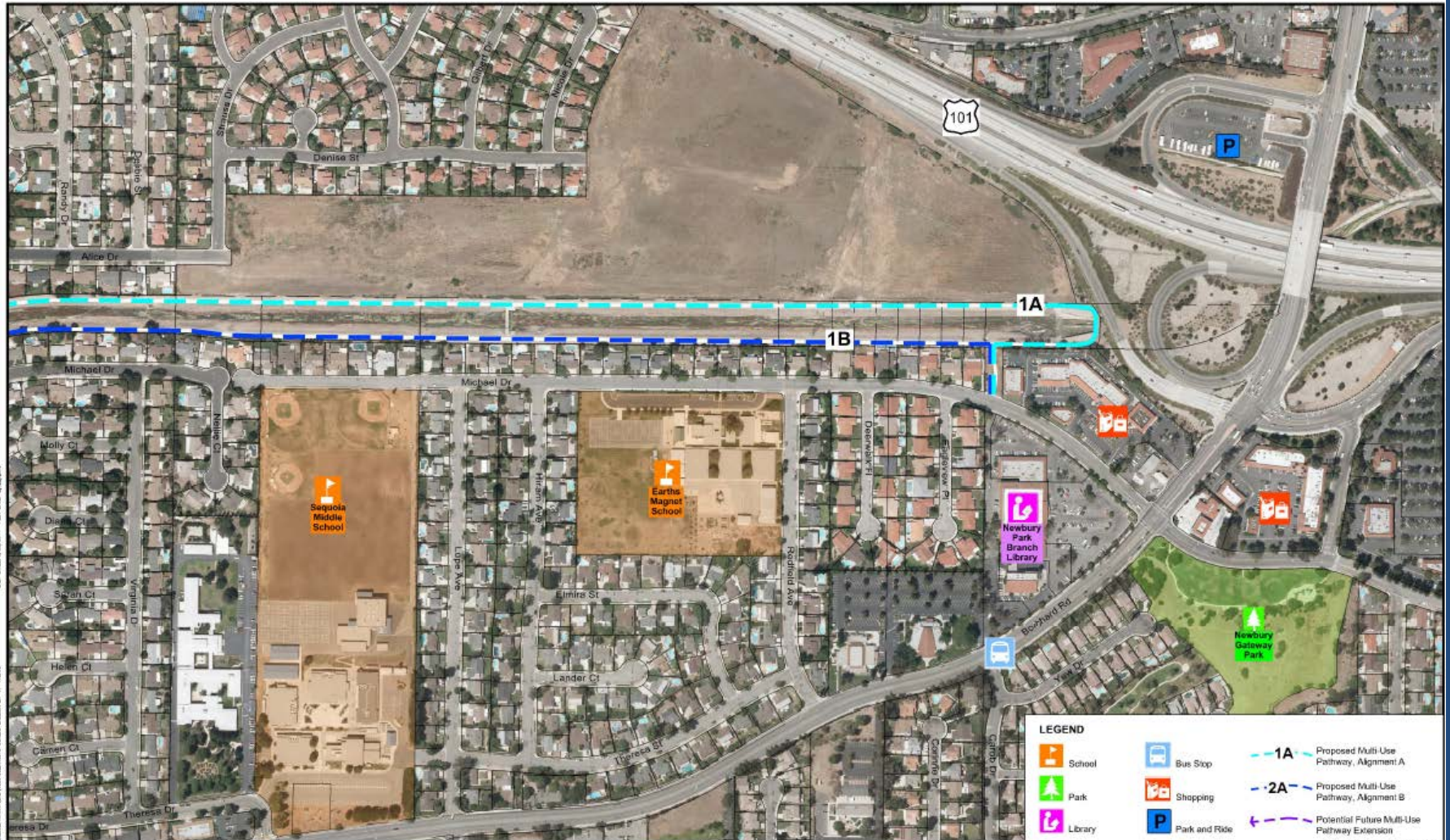
Legend

- Alignment B
- Alignment A
- VCWPD Jurisdictional Channel
- 100-Year Floodplain (1% annual probability)
- 500-Year Floodplain (0.2% annual probability)
- Area of Minimal Flood Hazard

Study Segments

- East Side: Michael Drive to Wendy
 - South Side
 - Newbury Park Drain Number 1
 - North Side
- West Side: Wendy Drive to Borchard Park
 - South Side
 - North Side
 - Newbury Park Drain Number 2
- Wendy Drive Crossing

East Side-Michael to Wendy

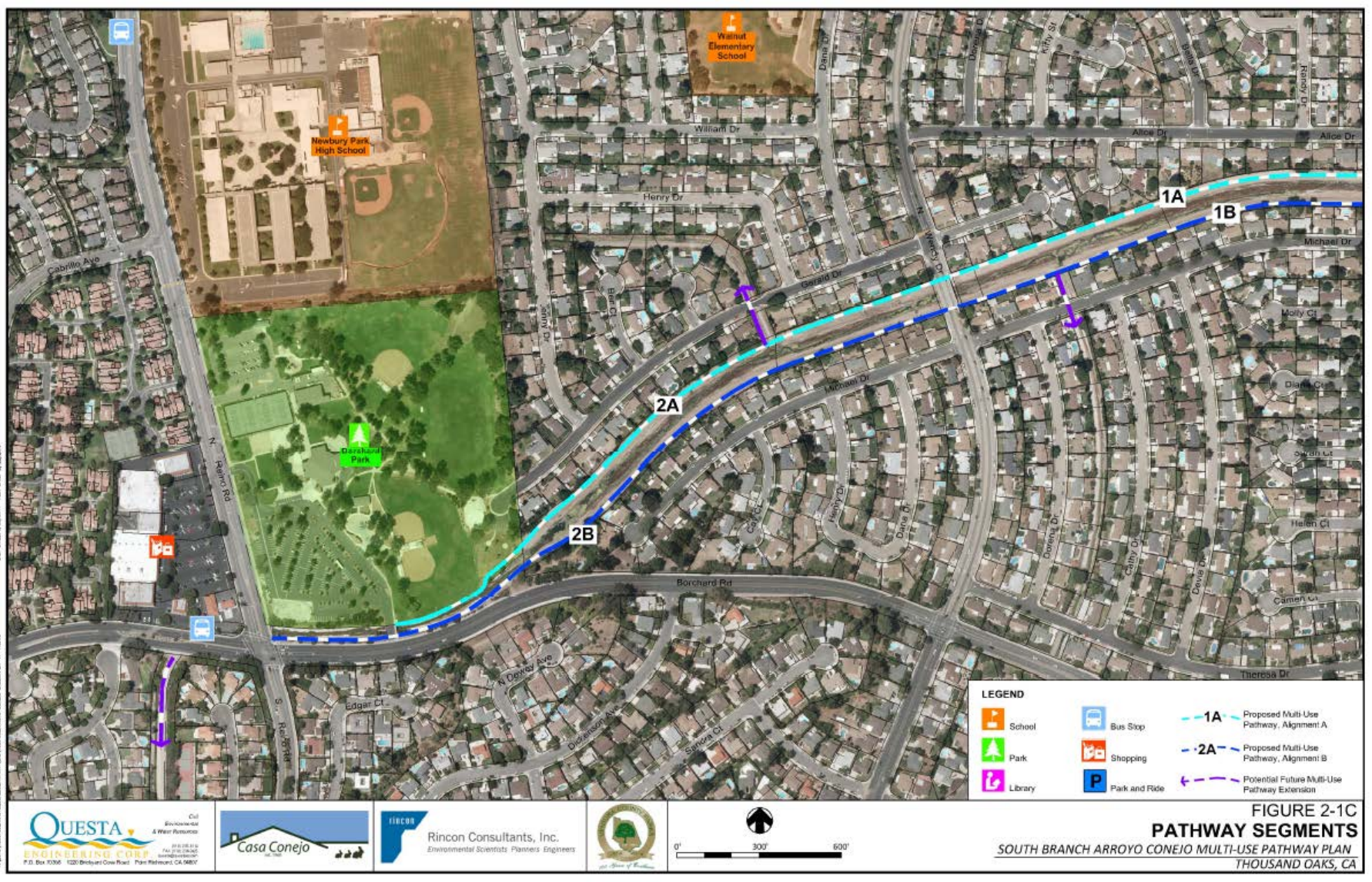


LEGEND

 School	 Bus Stop	 1A Proposed Multi-Use Pathway, Alignment A
 Park	 Shopping	 2A Proposed Multi-Use Pathway, Alignment B
 Library	 Park and Ride	 Potential Future Multi-Use Pathway Extension



West Side-Wendy to Borchard Park





Potential Community Concerns

- Privacy
- Crime
- Cost

Privacy

- Project would likely include some new fencing, screening or buffering
- Short walls may be a part of project, to increase flood protection, which is a benefit to adjacent homeowners
- Trail might be subject to dawn-to-dusk operating hours

Crime

- Ventura County Sheriff's Department
- City of Thousand Oaks – Crime Prevention
- Arroyo Simi Trail
- Camarillo Trail

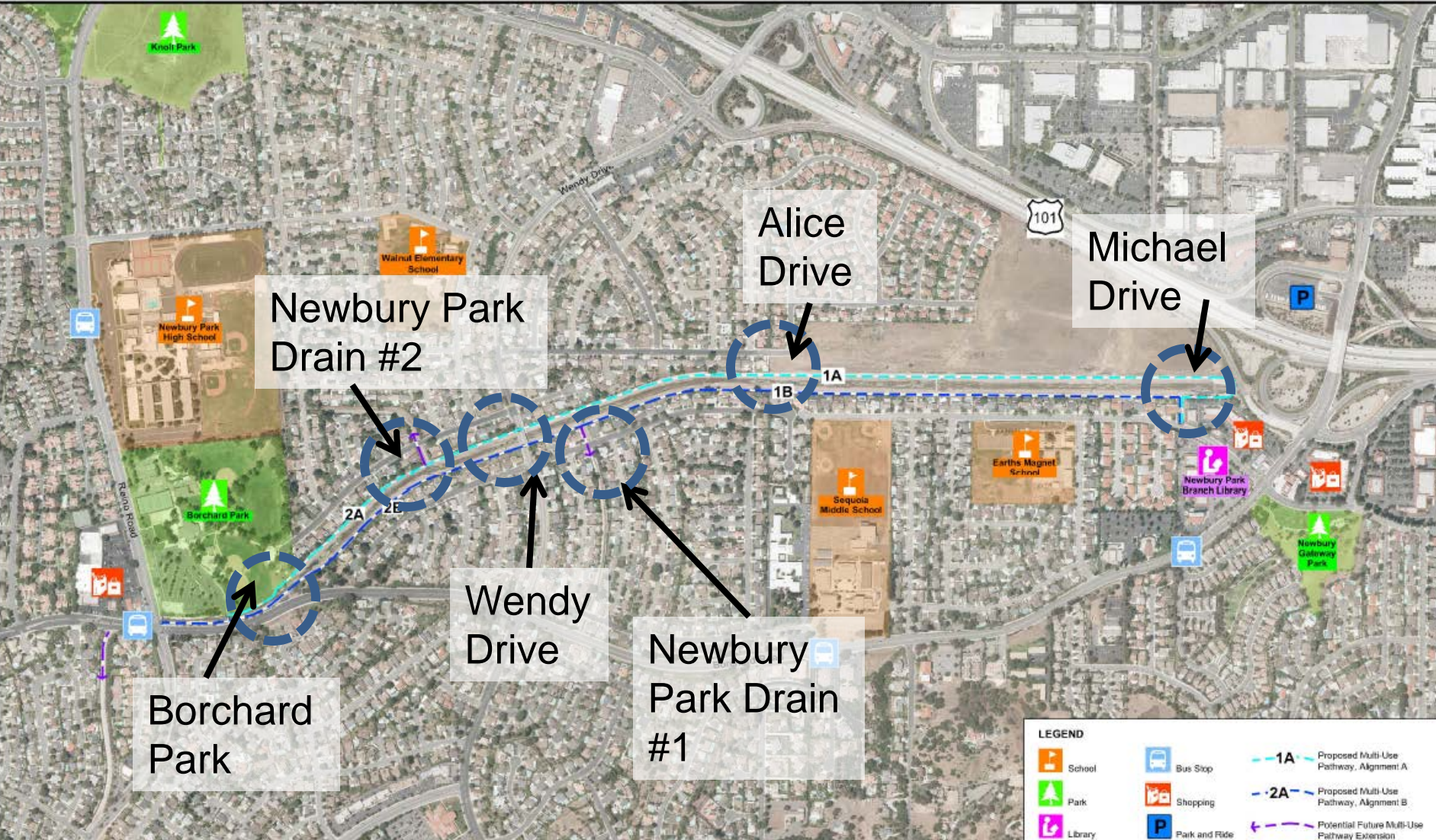
Cost

- Why spend money on a trail when our sidewalks need repair?
 - County policy is that residents pay for sidewalk repair
 - County (generally) maintains public trails
- Study Cost
 - Study is funded by Southern California Association of Governments (SCAG), not County revenues
 - Grant funding from SCAG Sustainability Program for Active Transportation Projects
- Trail Cost
 - Many grants available for trails and public access projects
 - Opportunities associated with access to schools
 - Opportunities when combined with flood control projects

Design Options

- Trail on one or both sides of channel
- Wendy Drive/Gerald crosswalk
 - New signal to be installed in 2015
- Address flood issues
 - Floodwalls
 - Increase channel capacity
 - Year-round or seasonal crossings: Wendy Drive and Newbury Drain #2
 - Seasonal bridge at Borchard Park box culvert
 - Coordinate with WPD flood control studies
- Restoring Habitat/Revegetation Options
 - Landscape buffer
 - In-channel habitat enhancement
- Park and Neighborhood Connections
 - Park, schools, Borchard Road future connections

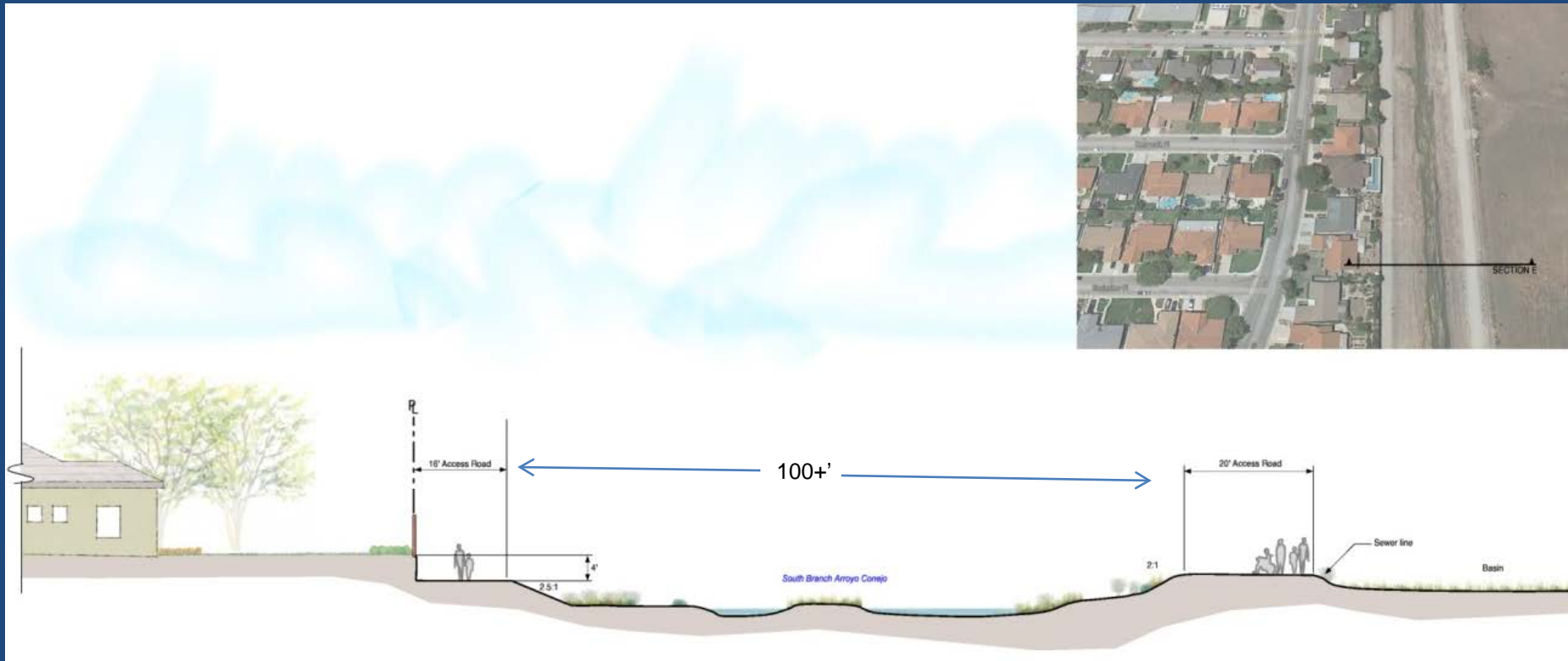
Design Options



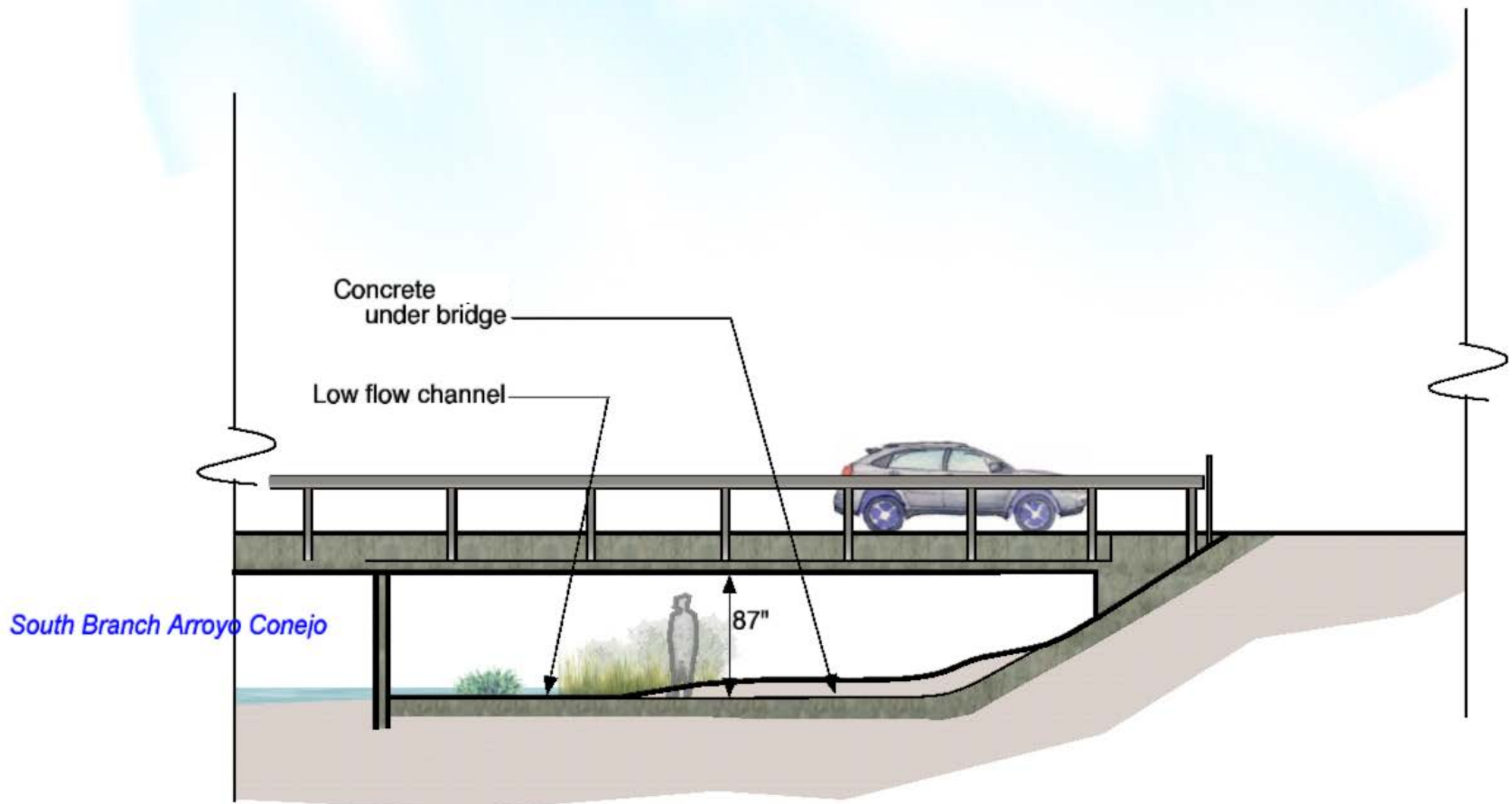
LEGEND

School	Bus Stop	Proposed Multi-Use Pathway, Alignment A
Park	Shopping	Proposed Multi-Use Pathway, Alignment B
Library	Park and Ride	Potential Future Multi-Use Pathway Extension

Michael Drive



Wendy Drive



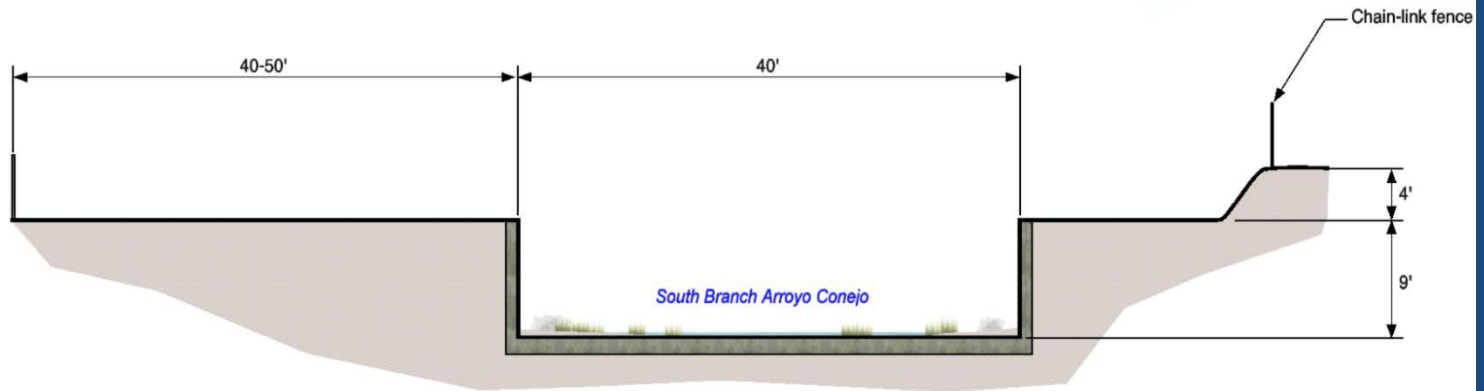
Newbury Park Drain Number 2



Borchard Park



Borchard
Road



Next Steps

- Define feasible trail route, project components, permits and approvals needed
- Identify costs, achieve consensus on planning objectives, and identify specific trail improvements that can be funded and approved for implementation
- Complete environmental review, final design, right of way and permits
- Build the trail

Questions and Comments

Thank you!