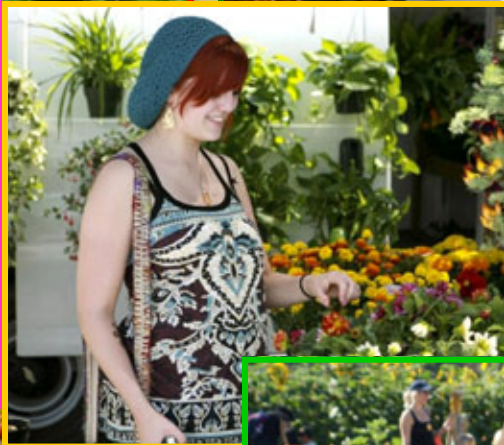


Ventura County

2010 Annual Crop Report



Office of the
AGRICULTURAL COMMISSIONER

AGRICULTURAL COMMISSIONER

Henry S. Gonzales

CHIEF DEPUTY AGRICULTURAL COMMISSIONER

Susan L. Johnson

DEPUTY AGRICULTURAL COMMISSIONERS

Kerry L. DuFrain, Rudy Martel, Heidi Wong

ADMINISTRATIVE SUPPORT

Bernice Muñoz, Nancy Parker, Jessica Serrato

AGRICULTURAL PLANNER

Rita Graham

SUPERVISING AGRICULTURAL BIOLOGISTS

John „Andy’ Calderwood, Ellen Kragh, George Mendoza

AGRICULTURAL BIOLOGISTS

Korinne Bell, Ryan Casey, Bridget Daughters, Tom Dimock
Blanca Enriquez-Pratt, Tim Fritch, Brady Gergovich, Freddi Hermann.
Mitch Koch, Edelyn LeDoux, Jamie Mastright, Dexter McDonald
Michael Otani, Louis Ortali, Meredith Shepard, Carl Waite

INSECT DETECTION SPECIALISTS

Clifford Ball, Linda Bellamy,
Michael Bellamy, Francisco Hernandez, Barbara Miller,
Connie Ratner, Ingus Richters

Cover photos provided by:

FOOD Share Inc, McGrath Family Farms, Underwood Ranches, and
the Ventura County Certified Farmers’ Market Association

Cover design by: Edelyn LeDoux



Office of
AGRICULTURAL COMMISSIONER

P.O. Box 3937
669 County Square Drive, Ventura, CA 93003
Telephone: (805) 477-1620
FAX: (805) 477-1615

Agricultural Commissioner
Henry S. Gonzales

Chief Deputy
Susan L. Johnson

July 19, 2011

TO: The Honorable Board of Supervisors of Ventura County

**Steve Bennett, 1st District,
Linda Parks, 2nd District, Chair
Kathy Long, 3rd District
Peter C. Foy, 4th District
John C. Zaragoza, 5th District
and
Karen Ross, Secretary
California Department of Food & Agriculture**

Pursuant to Section 2279 of the California Food and Agricultural Code, I am pleased to submit the 2010 Ventura County Agricultural Report. The estimated gross value for Ventura County agriculture for calendar year 2010 is \$1,859,151,000. This represents a 14% increase over 2009.

Strawberries are still the leading commodity in the County, with a value of \$542,127,000. This is an increase of 5% over 2009. The increase is attributed to more acres planted and a bump in value. Celery is our new second leading crop, with an estimated worth of \$182,268,000. This is an increase of 8% over 2009, and is due primarily to increases in acreage and production. Nursery stock dropped to third place, with a value of \$180,057,000. This is a decrease of 6% from 2009. This decrease is much less than the 36% decrease from 2008 to 2009 and is primarily due to a reduction in acreage. Lemons made a sizable rebound from 2009 and came in fifth in value at \$174,766,000. This 36% gain in value over 2009 is due to increases in production and value. Although raspberries had an 8% increase in value to \$164,446,000, the greater surge by lemons moved raspberries down in ranking to fifth this year. This increase over 2009 is attributed to increases in production and value. Avocados had a phenomenal year moving up from eighth to sixth place, with a whopping 240% increase over 2009 to \$148,343,000. The huge increase is due to increases in acreage and production. Tomatoes dropped in rank from sixth to seventh place, with a decrease of 6% to \$120,085,000, mostly from drops in production and value. Peppers moved from seventh to ninth place due to slight decreases in acreage and value to \$45,364,000. This represents a 1% decrease from 2009. Cut flowers moved up a spot from ninth to eighth place, reflecting an 11% increase to \$47,348,000. This increase is due to gains in production and value. Rounding out the top ten and knocking out cabbage is Valencia oranges with a 150% increase to \$28,164,000. The increase is attributed to more production and higher value.

This report reflects gross values only and does not represent the net return to farmers nor the multiplier effect on the surrounding economy. Agriculture in Ventura County continues to demonstrate a resistance to economic pressures that have decimated other industries.

Special thanks go to Kerry Dufraim for compiling the data in this report and to industry members that provided her with their individual information. Special recognition goes to Susan Johnson for the article, *Eating to Live and Living to Eat*, and to Edelyn LeDoux for the cover artwork.

Respectfully submitted,



Henry S. Gonzales
Agricultural Commissioner
County of Ventura

Eating to Live and Living to Eat

Food Dollars, Carbon Footprints, Locavours, and More

When evaluating the concept of Food Security, there is a noticeable difference between food producers and advocates for food access and conservation. For farmers, food security means delivering food to the consumer that is safe to consume. For food and conservation advocates, it means ready and consistent access to healthy food. Mention “locally grown” and you will get a myriad of opinions on how far is too far to still be considered locally grown.

Ventura County residents have a variety of reasons for valuing farming. It provides a wide variety of fruits and vegetables year round, gives us scenic views and open space, and makes possible our rural quality of life. People who want to consume most of their food from local sources stand a better chance of succeeding in Ventura County than almost any other place you can name. If a person chooses to plant an edible yard, they can grow a surprising variety of produce year round, even in an urban setting. Many of us have lost the concept of seasonal produce. We can walk into any major supermarket and find any fruit or vegetable any time of the year. How many of us actually examine that produce to see where it was grown? Although it takes a little effort, it is possible to discover the origin of those fruits and vegetables. Examining a carton of juice will often give you information on where the fruit was grown. It is nearly impossible to find orange juice from Ventura County unless you squeeze it yourself, but you can buy locally grown tomatoes all year round.

The concept of a “Carbon Footprint” in relation to the food we consume is relatively new. Even if your produce was grown here in Ventura County, it may have traveled many miles to Los Angeles or Orange County on its way to your table. Convenience has driven both food packaging and food production. Lettuce and other greens are packaged in cellophane bags, no chopping or slicing required. Vegetables come in bite-size pieces on plastic trays, with dip included. Tangerine trees are covered with netting to prevent pollination, so that there will be no seeds in the fruit. We are a population “on the move,” often in the drive-through line for our morning coffee, a mid-morning snack, or a quick lunch. There is a growing movement to promote “Slower Food,” the pleasure of a shared meal, or the sense of accomplishment that a garden provides. There is value in anticipation of spring blackberries and blueberries, summer melons, squash, peppers and eggplant, local oranges in the fall, and oh, those winter carrots, potatoes, and celery. It is possible to eat a tomato a day for a month and never eat the same tomato variety twice in a row. They come in purple, green, yellow, orange, red, and even white; as small as marbles or as large as softballs.

The place to experience the best of local farming is at one of the 15 Certified Farmers Markets (CFM) in Ventura County. Here, you can sample new varieties of heirloom tomatoes, peppers and squash; talk with your local farmer; trade recipes; and purchase some of the finest fruits, vegetables, nuts, and honey in the country. Many markets operate year round, and the produce changes with the season. It is a way to support small, local farmers, learn how your food is produced, and when it is at its peak. You can educate your palate, establish healthy eating habits in your children, and get some exercise - all at the same time.

In order to participate in a CFM, farmers must obtain a certificate from the Agricultural Commissioner. Agricultural Inspectors will visit the farm and inspect the “growing grounds” to make sure that the farmer is growing what he sells. Inspectors also visit the markets to make sure that producers are selling produce of their own production. The certificate must be posted in the seller’s booth and is a great way for consumers to make sure that they are dealing with a reputable company. The certificate will tell you where the growing grounds are located and what the farmer grows.

(continued on inside back cover)

AGRICULTURAL CROP REPORT RECAPITULATION AND INDEX 2009 – 2010

CROP GROUPING	YEAR	\$ VALUE ¹
1. FRUIT AND NUT CROPS	2010	\$1,085,677,000
Page #4	2009	\$867,759,000
2. VEGETABLE CROPS	2010	533,473,000
Page #5-6	2009	509,248,000
3. NURSERY STOCK ²	2010	180,057,000
Page #7	2009	191,300,000
4. CUT FLOWERS	2010	47,348,000
Page #8	2009	42,763,000
5. FIELD CROPS	2010	2,463,000
Page #8	2009	2,313,000
6. LIVESTOCK AND POULTRY	2010	6,161,000
Page #9	2009	7,494,000
7. APIARY PRODUCTS	2010	1,505,000
Page #9	2009	698,000
8. TIMBER	2010	14,000
Page #9	2009	9,000
9. SUSTAINABLE AGRICULTURE	2010	2,453,000
Page #10	2009	2,273,000
GRAND TOTAL	2010	\$1,859,151,000
	2009	\$1,623,857,000

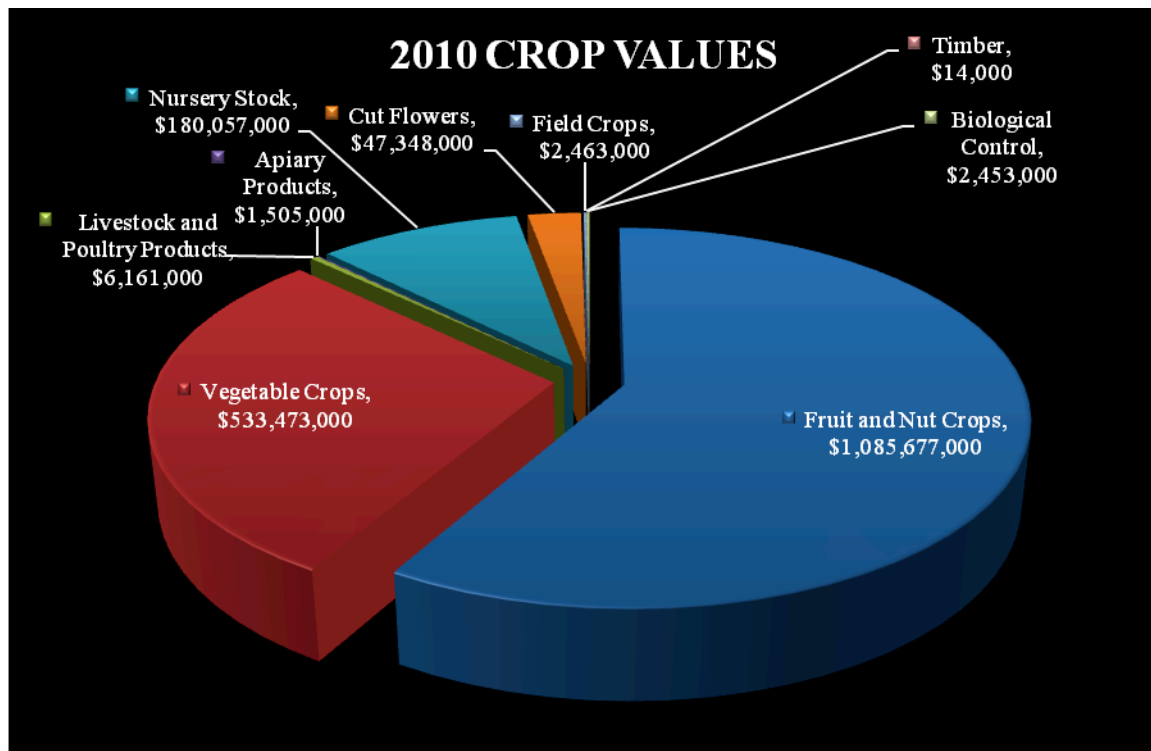
¹ Figures are rounded off to nearest \$1000

² Includes Cut Christmas Trees

FIVE YEAR COMPARISON

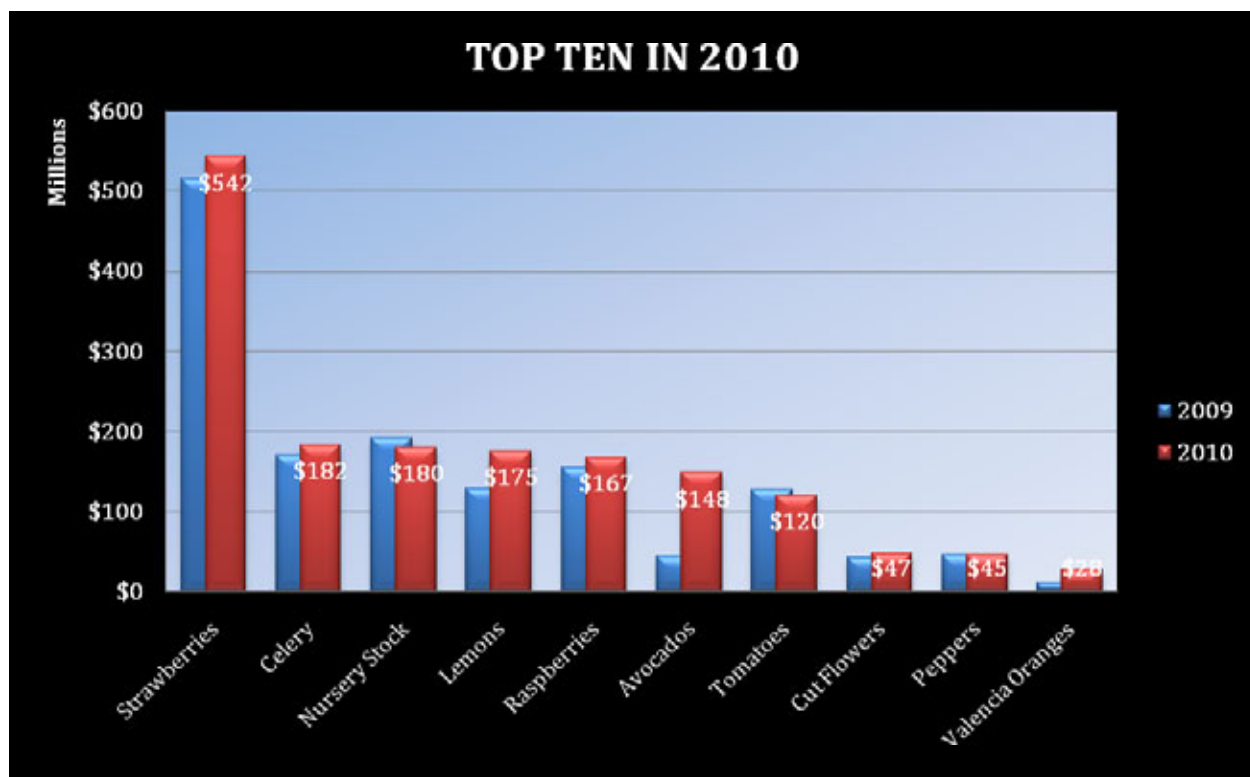
VENTURA COUNTY CROP GROUPING VALUES

	2006	2007	2008	2009	2010
Fruit and Nut Crops	755,700,000	752,138,000	823,464,000	867,759,000	\$1,085,677,000
Vegetable Crops	426,659,000	442,220,000	427,742,000	509,248,000	533,473,000
Livestock and Poultry Products	4,775,000	9,006,000	6,853,000	7,494,000	6,161,000
Apiary Products	431, 000	640,000	463,000	698,000	1,505,000
Nursery Stock	263,890,000	292,989,000	298,690,000	191,300,000	180,057,000
Cut Flowers	52,456,000	48,646,000	51,297,000	42,763,000	47,348,000
Field Crops	1,677,000	1,624,000	2,580,000	2,313,000	2,463,000
Timber	16,000	17,000	10,000	9,000	14,000
Biological Control	2,570,000	2,718,000	2,148,000	2,273,000	2,453,000
GRAND TOTAL	\$1,508,174,000	\$1,549,988,000	\$1,613,247,000	\$1,623,857,000	\$1,859,151,000



TEN LEADING CROPS FOR 2010

RANK	CROP	VALUE
1 st	Strawberries	\$542,127,000
2 nd	Celery	182,268,000
3 rd	Nursery Stock	180,057,000
4 th	Lemons	174,766,000
5 th	Raspberries	167,446,000
6 th	Avocados	148,343,000
7 th	Tomatoes	120,085,000
8 th	Cut Flowers	47,348,000
9 th	Peppers	45,364,000
10 th	Valencia Oranges	28,164,000



OTHER MILLION DOLLAR CROPS

Cabbage	22,431,000	Cucumber	5,746,000
Greens	18,277,000	Beans (all)	4,891,000
Cilantro	15,862,000	Kale	4,757,000
Lettuce	13,988,000	Broccoli	4,148,000
Spinach	11,680,000	Oriental Vegetables	4,088,000
Vegetable Transplants*	11,240,000	Beets	3,781,000
Parsley	7,285,000	Carrots	3,118,000
Radishes	7,072,000	Orchids*	2,611,000
Livestock	6,161,000	Poinsettia*	2,424,000
Tangerines	5,805,000	Onions (all)	1,675,000

* Included in Nursery Stock total above

FRUIT AND NUT CROPS

ACREAGE, PRODUCTION AND VALUES 2009-2010

CROP	YEAR	PRODUCTION		TOTAL	UNIT	\$ VALUE	
		HARVESTED ACREAGE	PER ACRE			PER UNIT	TOTAL
AVOCADOS							
	2010	18,916	4.82	91,063	Tons	\$1,629.02	\$148,343,000
	2009	17,665	0.99	17,483	Tons	2,498.26	43,677,000
GRAPEFRUIT							
	2010	103	11.79	1,214	“	476.12	578,000
	2009	100	8.90	890	“	502.25	447,000
LEMONS							
	2010	16,856	18.14	305,670	“	571.75	174,766,000
	2009	17,703	16.61	293,881	“	438.22	128,784,000
ORANGES (Navel)							
	2010	449	16.15	7,251	“	493.18	3,576,000
	2009	316	11.88	3,754	“	372.67	1,399,000
ORANGES (Valencia)							
	2010	3,262	15.09	49,198	“	572.47	28,164,000
	2009	3,402	8.83	30,015	“	375.22	11,262,000
RASPBERRIES							
	2010	2,630	9.44	24,806	“	6,750.23	167,446,000
	2009	2,838	9.10	25,800	“	6,020.43	155,327,000
STRAWBERRIES							
Total	2010	11,875	29.40	349,125	“	1,552.82	542,127,000
	2009	11,766	30.37	357,216	“	1,442.85	515,406,000
Fresh	2010			261,847	“	1,887.71	494,289,000
	2009			277,913	“	1,685.50	468,422,000
Processed	2010			87,278	“	548.12	47,838,000
	2009			79,303	“	592.37	46,984,000
TANGERINES & TANGELOS							
	2010	722	6.90	4,978	“	1,166.14	5,805,000
	2009	477	4.44	2,114	“	1,403.51	2,967,000
MISC. FRUITS AND NUTS ³							
	2010	1,487			“		14,872,000
	2009	842			“		8,490,000
TOTAL							
	2010	56,300					\$1,085,677,000
	2009	55,109					\$867,759,000

³ MISC. FRUITS AND NUTS include Apples, Apricots, Asian Pears, Bushberries, Cherimoya, Grapes, Guavas, Kiwi, Limes, Olives, Persimmons, Macadamias, Walnuts; and miscellaneous citrus, deciduous, and subtropical fruit

VEGETABLE CROPS

ACREAGE, PRODUCTION AND VALUES 2009-2010

PRODUCTION						\$ VALUE	
CROP	YEAR	HARVESTED ACREAGE	PER ACRE	TOTAL	UNIT	PER UNIT	TOTAL
BEANS							
Green and	2010	1,856	3.31	6,131	Tons	\$797.75	\$4,891,000
Dry Limas,	2009	1,842	2.60	4,788	Tons	1,007.31	4,823,000
Green Snap							
BEETS							
	2010	446	15.44	6,884	“	549.25	3,781,000
	2009	385	14.98	5,765	“	546.93	3,153,000
BROCCOLI							
Fresh and	2010	671	9.57	6,421	“	646.01	4,148,000
Processed	2009	615	8.63	5,303	“	651.15	3,453,000
CABBAGE							
	2010	4,046	26.16	105,816	“	211.99	22,431,000
	2009	3,516	22.00	77,335	“	259.31	20,053,000
CARROTS							
	2010	378	20.37	7,697	“	405.10	3,118,000
	2009	508	20.54	10,430	“	330.40	3,446,000
CELERY							
	2010	11,949	39.59	473,054	“	385.31	182,268,000
	2009	11,138	37.67	419,466	“	404.06	169,488,000
CILANTRO							
	2010	3,309	9.54	31,543	“	502.87	15,862,000
	2009	2,988	8.53	25,484	“	447.97	11,416,000
CUCUMBERS ⁴							
	2010	98	27.25	2,670	“	2,152.06	5,746,000
	2009	108	58.99	6,370	“	1,189.02	7,574,000
GREENS ⁵							
	2010	1,556	5.28	8,206	“	2,227.28	18,277,000
	2009	1,255	6.30	7,896	“	2,115.13	16,701,000
KALE							
	2010	318	14.89	4,732	“	1,005.29	4,757,000
	2009	307	15.40	4,727	“	879.21	4,156,000
LETTUCE							
Total	2010	2,081	11.51	23,938	“	584.35	13,988,000
	2009	1,818	10.58	19,217	“	530.06	10,186,000
Head							
	2010	131	20.33	2,663	“	398.05	1,060,000
	2009	60	11.59	695	“	414.39	288,000
Romaine							
	2010	1,129	12.46	14,067	“	535.23	7,529,000
	2009	912	12.40	11,303	“	404.68	4,574,000
Leaf							
	2010	821	8.78	7,208	“	749.03	5,399,000
	2009	846	8.54	7,219	“	737.50	5,324,000

⁴ Includes hydroponics

⁵ Includes: chard, collard, mustard, turnip and watercress.

VEGETABLE CROPS

ACREAGE, PRODUCTION AND VALUES 2009-2010

CROP	YEAR	PRODUCTION			UNIT	\$ VALUE	
		HARVESTED ACREAGE	PER ACRE	TOTAL		PER UNIT	TOTAL
ONIONS	2010	156	8.77	1,367	Tons	\$1225.32	\$1,675,000
Green & Dry	2009	117	11.51	1,346	Tons	1529.72	2,059,000
ORIENTAL VEGETABLES	2010	448	13.61	6,096	“	670.61	4,088,000
	2009	667	11.87	7,915	“	661.66	5,237,000
PARSLEY	2010	760	12.87	9,780	“	744.89	7,285,000
	2009	626	14.83	9,282	“	427.50	3,968,000
PEPPERS							
Bell and	2010	2,690	24.40	65,611	“	691.41	45,364,000
Chili	2009	3,134	20.05	62,891	“	729.87	45,902,000
PUMPKIN	2010	102	18.11	1,847	“	208.45	385,000
	2009	152	13.73	2,086	“	230.59	481,000
RADISHES	2010	1,123	12.21	13,702	“	516.13	7,072,000
	2009	1,141	12.63	14,406	“	382.97	5,517,000
SPINACH	2010	1,446	8.95	12,933	“	903.12	11,680,000
	2009	1,744	7.02	12,237	“	897.77	10,986,000
SWEET CORN	2010	888	9.38	8,329	“	107.94	899,000
	2009	883	8.31	7,331	“	231.90	1,700,000
TOMATOES ⁶	2010	1,607	63.60	102,192	“	1,175.10	120,085,000
	2009	1,790	57.51	102,938	“	1,235.02	127,130,000
VEGETABLES, MISC. ⁷	2010	1,718					55,673,000
Field, Indoor, and Processed	2009	1,603					51,819,000
TOTAL	2010	37,646					\$533,473,000
	2009	36,337					509,248,000

⁶ Includes hydroponics

⁷ Includes: artichokes, arugula, asparagus, baby vegetables, cauliflower, eggplant, endive, garlic, gourds, herbs, kohlrabi, leeks, melons, mushrooms, peas, radicchio, sprouts, squash, tomatillos, and turnips.

NURSERY STOCK PRODUCTION AND VALUES 2009-2010

ITEM	YEAR	PRODUCTION	PRODUCTION AREA		Per Unit	TOTAL
			Greenhouse	Field		
			Square Feet	Acres		
NURSERY STOCK						
	2010		7,507,545	3,589		\$180,057,000
	2009		7,067,258	3,989		191,300,000
Fruit and Nut Trees	2010	1,029,606 Trees	61,800	145	\$16.11	16,584,000
	2009	728,530 Trees	1,800	119	14.80	10,782,000
Potted Plants	2010	3,061,113 Pots	3,695,361	23	3.79	11,572,000
	2009	2,869,680 Pots	3,412,354	25	4.21	12,090,000
Propagative Mat	2010	51,218,720 Cuttings	614,248	15	.14	7,170,000
	2009	50,060,321 Cuttings	592,780	15	.12	6,145,000
Herb. Perennials	2010	4,062,387 Containers	106,356	144	3.16	12,819,000
	2009	5,468,188 Containers	80,484	236	3.44	18,803,000
Woody Orn.*	2010	7,046,189 Tree/Shrubs	1,036,620	2,095	12.02	84,670,000
	2009	9,353,841 Tree/Shrubs	1,175,180	2,329	10.06	94,057,000
Bed. Plants	2010	20,439,775 Flats	572,210	1,147	1.77	36,002,000
Gr. Cover & Turf	2009	23,615,734 Flats	590,480	1,249	1.61	38,057,000
Veg. Transplants	2010	3,685,858 Flats	1,420,950	20	3.05	11,240,000
	2009	3,695,581 Flats	1,214,180	16	3.08	11,366,000
TOTAL						
	2010					\$180,057,000
	2009					191,300,000

*Includes cut Christmas Trees

CUT FLOWERS PRODUCTION AND VALUES 2009-2010

ITEM	YEAR	ACRES	PRODUCTION	UNIT	TOTAL \$ VALUE
FLOWER BLOOMS & STEMS	2010	50	14,259,967	Blooms	\$4,297,000
	2009	55	13,641,066	Blooms	4,072,000
CUT GREENS & DRIED FLOWERS	2010	75	818,617	Bunches	1,002,000
	2009	86	459,875	Bunches	1,722,000
FLOWER BUNCHES Total	2010	738	14,585,340	Bunches	42,049,000
	2009	740	13,187,789	Bunches	36,969,000
Statice, Lace, Aster And Gypsophila	2010	75	1,578,357	"	3,728,000
	2009	59	1,208,412	"	3,447,000
Chrysanthemums and Sunflowers	2010	66	3,081,059	"	4,609,000
	2009	89	2,867,744	"	4,737,000
Lilies & Irises	2010	89	3,999,591	"	19,417,000
	2009	64	3,583,267	"	14,821,000
Lisianthus	2010	23	568,109	"	1,929,000
	2009	24	476,604	"	1,768,000
Delphinium, Larkspur, Stock & Snapdragons	2010	357	4,032,241	"	8,415,000
	2009	346	2,523,206	"	5,521,000
Miscellaneous	2010	128	1,625,983	"	3,951,000
	2009	158	2,528,556	"	6,675,000
TOTAL	2010	863			\$47,348,000
	2009	881			42,763,000

FIELD CROPS ACREAGE, PRODUCTION AND VALUE 2009-2010

CROP	YEAR	HARVESTED ACREAGE	TOTAL \$ VALUE
ALFALFA AND PASTURE Irrigated and Non-Irrigated	2010	91,509	\$1,105,000
	2009	100,284	1,556,000
GRAIN ⁸ , HAY, & VEGETABLE SEED	2010	968	1,358,000
	2009	1,235	757,000
TOTAL	2010		\$2,463,000
	2009		2,313,000

⁸ Includes green barley

LIVESTOCK AND POULTRY PRODUCTION AND VALUES 2009-2010

ITEM	YEAR	PRODUCTION	UNIT	\$ VALUE	
				PER UNIT	TOTAL
LIVESTOCK					
Cattle, Hogs	2010	16,074	cwt.	\$115.35	\$1,854,000
Sheep	2009	20,456	cwt.	99.44	2,034,000
POULTRY					
Chickens and Eggs	2010				4,261,000
	2009				5,106,000
OTHER LIVESTOCK					
Alpaca and Squab	2010				46,000
	2009				354,000
TOTAL					
	2010				\$6,161,000
	2009				7,494,000

APIARY PRODUCTS PRODUCTION AND VALUES 2009-2010

CROP	YEAR	PRODUCTION	UNIT	\$ VALUE	
				PER UNIT	TOTAL
HONEY	2010	562,589	lbs	\$1.57	\$880,000
	2009	121,344	lbs	\$1.66	201,000
BEESWAX AND POLLEN	2010	15,000	"	3.40	51,000
	2009	23,310	"	2.32	54,000
POLLINATION USE	2009				574,000
	2009				443,000
TOTAL					
	2010				\$1,505,000
	2009				698,000

* Beeswax only

TIMBER PRODUCTION AND VALUES 2009-2010

CROP	YEAR	\$VALUE
TIMBER	2010	\$14,000
	2009	9,000

SUSTAINABLE AGRICULTURE

ITEM	PEST	AGENT	SCOPE OF PROGRAM
BIOLOGICAL CONTROL			
Commercial Insectaries	Red and black scale, Mealybug, snails, various aphids, mites and flies	<u>Aphytus melinus</u> , <u>Cryptolemus</u> , Decollate snails, various predators, parasitic wasps and nematodes	Estimate 31,904,835,000 beneficials, released on 232 ranches. Valued at \$2,453,000
COLONIZATION OF BENEFICIAL ORGANISMS	-	-	-
PEST ERADICATION	Dalmation Toadflax Scotch Thistle Spotted Knapweed Euphorbia terracina	Mechanical/ Digging Mechanical/ Digging Mechanical/ Digging Mechanical/Digging	1 Site 1 Site 1 Site 1 Site
PEST EXCLUSION		<u>Incoming Shipments</u>	
	Various	Postal/UPS/Fed Express (Parcels) Truck/Air Freight	3,982 1,000
	Gypsy Moth	Household Goods (Inspections)	91
		Total	5,073
	Various	<u>Swap Meets/Ethnic Markets/Mobile Venders</u>	1
ORGANIC FARMING			
NUMBER OF REGISTERED GROWERS	YEAR	ACRES	CROPS
79	2010		
79	2009		
	2010	1,905	VEGETABLES AND HERBS
	2009	1,801	
	2010	3,265	FRUITS AND NUTS
	2009	2,723	
	2010	1	FIELD CROPS
	2009		
	2010	15	FLOWERS/ NURSERY STOCK
	2009	9	
Total Acreage	2010	5,186	
	2009	4,337	

Certified organic produce is available in some markets, along with many non-certified products, like bakery goods, flowers, and nursery stock. Unlike markets in other areas of the state, most of the produce featured in our county is actually grown in our county. Los Angeles and Orange County host over 25% of the CFMs in the state, and most of them feature Ventura County products. Our farmers supply most of Southern California with fresh fruits and vegetables. Visit a CFM in your area and establish a relationship with the people who feed you and improve the quality of life for us all.

VENTURA COUNTY CERTIFIED FARMERS' MARKETS

<u>City</u>	<u>Day</u>	<u>Time</u>	<u>Market</u>	<u>Address</u>
Camarillo	Sat	7AM-1PM	Camarillo Hospice	2220 Ventura Blvd
Fillmore	Wed	3:30PM-7PM	Fillmore Community	250 Central Av Central Av & Main
Moorpark	Fri	1PM-8PM	Moorpark at the Village	Village/ Moorpark Shopping Cntr 730 New Los Angeles Av
Newbury Park	Sat	8AM-2PM	Newbury Park	2700 Teller Rd Camino Dos Rios @ Hillcrest
Oak Park	Sat	9AM-1PM	Oak Park	899 N. Kanan Rd @ Oak Park High School
Ojai	Sun	9AM-1PM	Ojai	300 E. Matilija St Between Signal & Montgomery
Oxnard	Sun	10AM-2PM	Channel Islands	3350 Harbor Blvd @ Caberzone Way, harborside
Oxnard	Thu	9AM-1PM	Downtown Oxnard	Downtown Plaza Park 5 th and C Streets
Simi Valley	Tue	3PM-7PM	Simi Valley Town Center	Simi Valley Town Center 1555 Simi Town Center Way
Simi Valley	Fri	11AM-3:30PM	Simi Valley	Simi Civic Center Plaza Tapo Canyon @ Alamo St
Thousand Oaks	Thu	1:30PM-6:30PM	Thousand Oaks	The Oaks Shopping Center T.O. Blvd and Wilbur Rd, east end
Thousand Oaks	Sun	10AM-2PM	Westlake Village	2797 Agoura Rd
Ventura	Sat	8:30AM-12PM	Ventura Downtown	Santa Clara and Palm Streets
Ventura	Wed	9AM-1PM	Ventura Midtown	Pacific View Mall in front of Sears
Ventura	Thu	3PM-7PM	Harvest Gathering	10269 Telephone Rd Ventura Moose Lodge



Office of
Agricultural Commissioner
669 County Square Drive
Ventura, CA 93003