



Runway 7-25, Taxiway Connectors, and Parallel Taxiway Pavement Reconstruction Project

Workshop #2

Oxnard Airport

**2889 W. Fifth Street
Oxnard, CA 93030**

November 17, 2020

This meeting is being recorded.

Introductions

Oxnard Airport:

Kip Turner, CM - Director of Airports

Erin Powers - Project Manager



Mead & Hunt (Design Team):

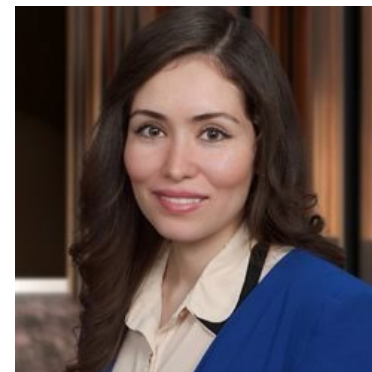
Chuck McCormick - Project Manager

Jannet Loera, PE - Civil Design Lead

Arellano Associates (Public Outreach):

Stacey Falcioni, MPA - Project Manager

Elsa Argomaniz - Senior Project Coordinator



Why we are here

- Purpose
- Project overview/description
- Proposed Airfield Changes
- Workshop #1 Survey Results
- Phasing Alternatives
- Participant Survey
- Future Meetings and Contact Information
- Questions and Answers

Project Overview

- Pavement reconstruction
- Application of pavement markings
- Installation of an underdrain system
- Storm drain improvements
- Installation of new edge lights and MALSF lights
- Installation of new signs



Project Description

- This Project will be designed and bid as a single bid package but will consist of a base bid and up to two bid alternates.
- The proposed breakdown is as follows:
 - Runway 7-25 Reconstruction (Base Bid)
 - Taxiway Connectors A-E Reconstruction (Bid Alternate 1)
 - Parallel Taxiway F Reconstruction (Bid Alternate 2)



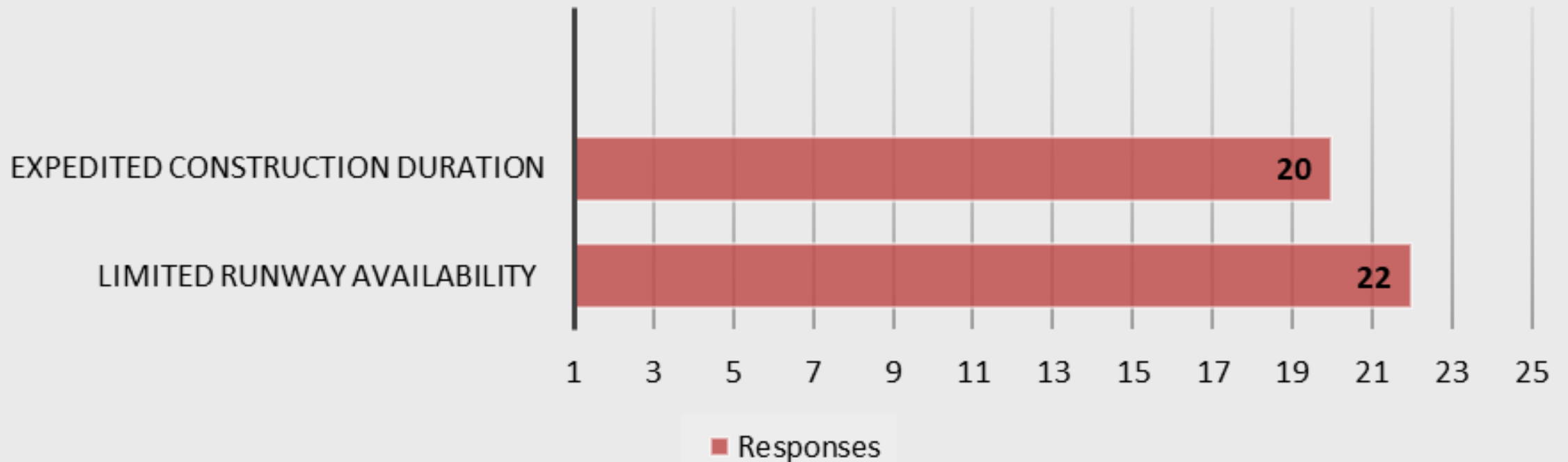
Proposed Airfield Changes

- Taxiway Configuration
- High-speed Taxiway
- Taxiway Names (if at least Base bid and Bid Alternate 1 are awarded)



WORKSHOP #1 SURVEY RESULTS

What Is More Important for You?



Survey date: August 25, 2020



Alternative 1

Full Runway Closure with
No Arrivals or Departures

Alternative 1: Full Runway Closure

Impact To Airfield Operations:

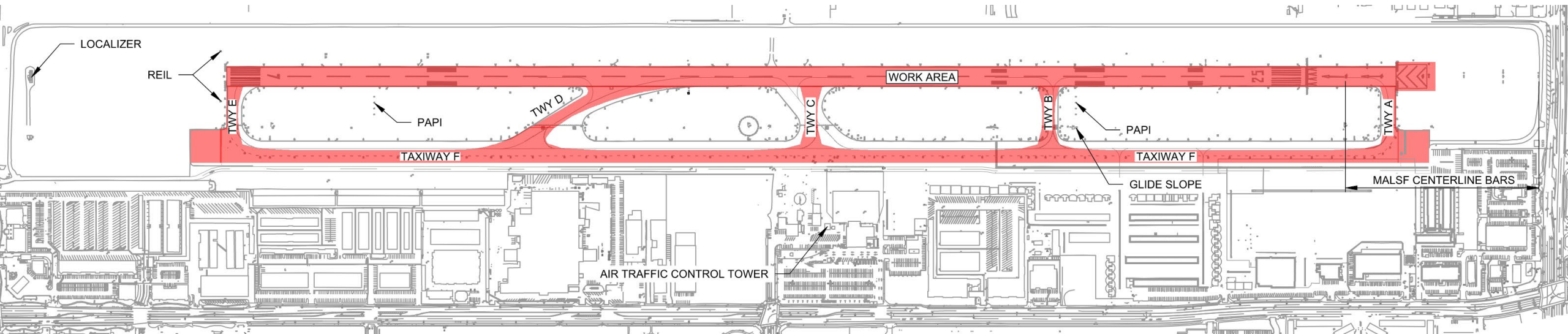
- Runway 7-25 Closed
- Existing Taxiways A, B, C, D, E and F Closed

Impact To Airfield Facilities:

- Runway 25 End
 - Power off PAPI
 - Power off MALSF
 - Power off Glide Slope
 - Power off Localizer
- Runway 7 End
 - Power off PAPI
 - Power off REIL

Major Construction Activities:

- Reconstruct Runway 7-25
- Reconstruct Taxiways A, B, C, D, E, and F



Alternative 1: Full Runway Closure

Evaluation Criteria	Analysis	Scoring*
Safety	Increased operations at nearby airports. Aircraft operations on RW 7-25 prohibited during runway construction operations. No piston or turbine aircraft operations.	9
Schedule	Approximate 3-4 months construction duration. Allows for greater concurrent construction operations.	7
Budget	Most cost-effective construction operations.	10
Quality	No transverse AC pavement joints in surface course. Allows for continuous and concurrent construction operations for the duration of work.	10
	Total	36

**Scoring is provided on a scale from 0 to 10. A score of 10 indicates an ideal scenario, and a score of 0 indicates an unacceptable scenario and eliminates the Alternative from consideration.*



Alternative 2

Two-Phase Construction with
Limited Runway Availability

Alternative 2: Two-Phase Construction with Limited Runway Availability

Impact To Airfield Operations:

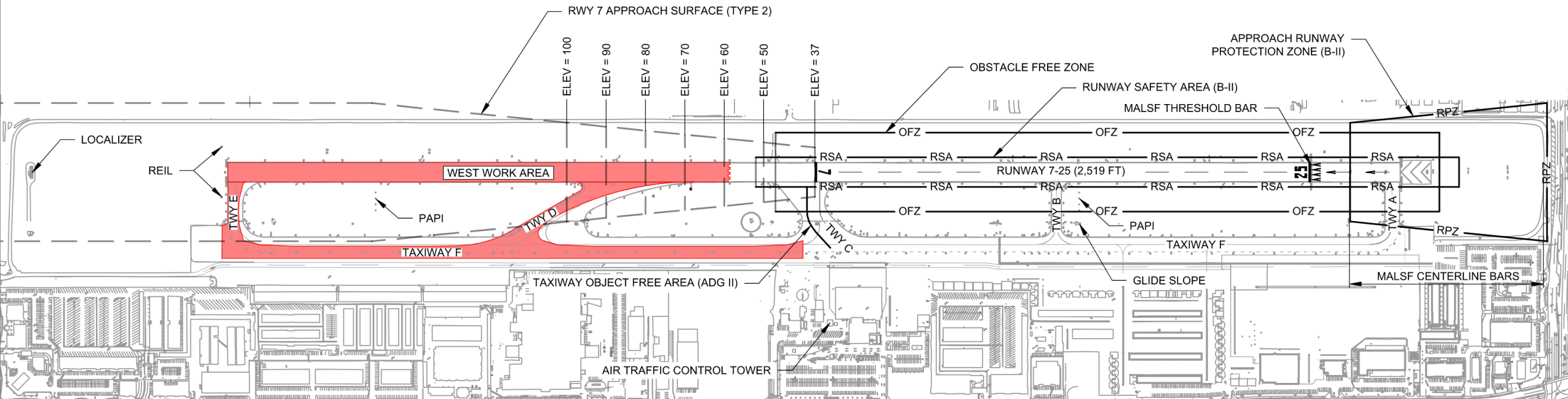
- Temporary Runway 7-25 available under VFR condition
- Temporary Runway 7-25 length is 2,519 feet
- Existing Taxiway C operational with Temporary alignment
- Existing Taxiways D, E, and F (west of Taxiway C) closed

Impact To Airfield Facilities:

- Runway 25 End
 - Power off PAPI
 - Power off MALS F
 - Power off Glide Slope
 - Power off Localizer
- Runway 7 End
 - Power off PAPI
 - Power off REIL

Major Construction Activities:

- Reconstruct Runway 7-25 west of Taxiway C
- Reconstruct Taxiways D, E, and F (west of Taxiway C)



Alternative 2: Two-Phase Construction with Limited Runway Availability

Impact To Airfield Operations:

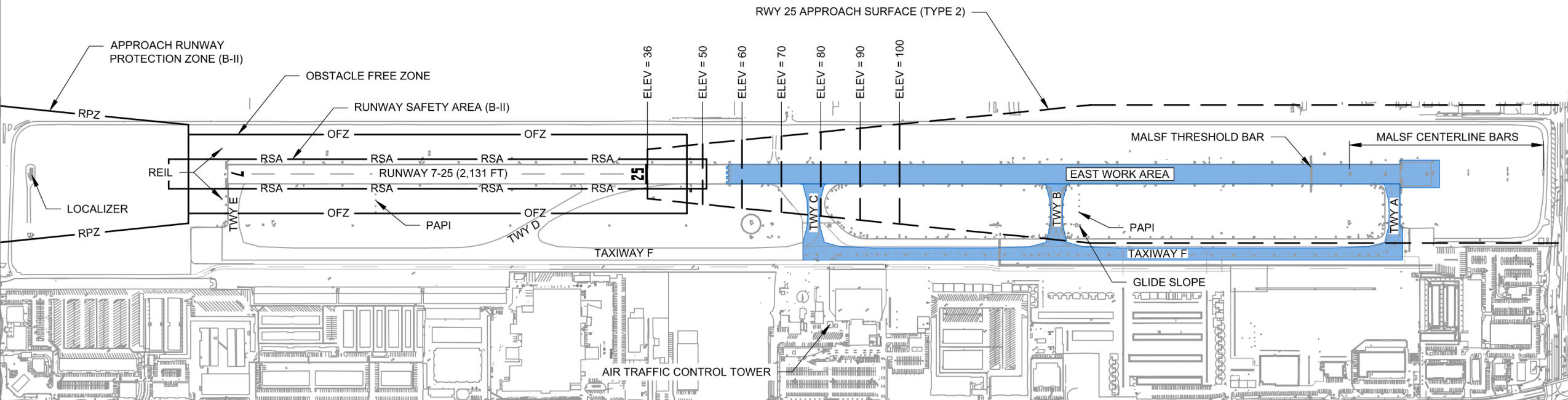
- Temporary Runway 7-25 available under VFR condition
- Temporary Runway 7-25 length is 2,131 feet
- Existing Taxiways A, B, C, and F (east of Taxiway C) closed

Impact To Airfield Facilities:

- Runway 25 End
 - Power off PAPI
 - Power off MALSF
 - Power off Glide Slope
 - Power off Localizer
- Runway 7 End
 - Power off PAPI
 - Power off REIL

Major Construction Activities:

- Reconstruct Runway 7-25 east of Taxiway C
- Reconstruct Taxiways A, B, C, and F (east of Taxiway C) closed



Alternative 2: Two-Phase Construction with Limited Runway Availability

Evaluation Criteria	Analysis	Scoring
Safety	<p>Shortened runway available for small aircraft. Reconfigured runway. Aircraft operations over construction.</p> <p>No NAVAIDS or VISAIDS. Assumed VFR conditions and no runway lights. Otherwise would add complexity, such as flight checks, increased duration, reduced length to meet spacing, etc.</p> <p>Reduced runway length coupled with aircraft operations over construction operations will be well vetted through the SRM process mitigating safety risks to an acceptable magnitude and likelihood.</p>	4

**Scoring is provided on a scale from 0 to 10. A score of 10 indicates an ideal scenario, and a score of 0 indicates an unacceptable scenario and eliminates the Alternative from consideration.*

Alternative 2: Two-Phase Construction with Limited Runway Availability

Evaluation Criteria	Analysis	Scoring
Schedule	Approximate 5 - 5.5 months construction duration (including up to three 1-to-2-week full runway closures). Limited concurrent construction operations. No turbine and limited piston aircraft operations.	6
Budget	Reduced construction efficiency and duration results in increased costs. Adding two runway reconfiguration operations. Construction cost increased by approximately \$1.2 million.	5
Quality	One planned transverse AC pavement joint. Construction operations divided over two phases and decreases efficiency.	7
	Total	22

**Scoring is provided on a scale from 0 to 10. A score of 10 indicates an ideal scenario, and a score of 0 indicates an unacceptable scenario and eliminates the Alternative from consideration.*

Comparison

Evaluation Criteria	Alternative 1: Full Closure	*Alternative 2: Partial Closure
Safety	9	4
Schedule	7	6
Budget	10	5
Quality	10	7
Total	36	22

Scoring is provided on a scale from 0 to 10. A score of 10 indicates an ideal scenario, and a score of 0 indicates an unacceptable scenario and eliminates the Alternative from consideration.

*** Funding:** Alternative 2 increases construction costs by approximately \$1.2 million.

Participant Survey

SURVEY

1. During construction, would you temporarily relocate to Camarillo airport if there was an opportunity?

- A. Yes
- B. No
- C. Does not apply

2. How often do you fly?

- A. Once or more per month
- B. Once or more per week
- C. Once or more per quarter
- D. Does not apply

3. Based on the updated information, do you prefer:

- A. Alternative 1
- B. Alternative 2

Future Workshops and Contact Information

- This presentation will be summarized:
 - At the Aviation Advisory Commission Members Meeting on December 7th.
 - At the Airport Authority Meeting on December 10th.
- Future workshop in late January/early February.

Project Email: OxnardAirportRunway@arellanoassociates.com

Help Line: 909-313-0549

Questions and Answers



Thank You