



# FLY-IN

CAMARILLO, CA

04/28 | 17

04/29

PILOT INFORMATION  
PACKET

SPECIAL FLIGHT PROCEDURES  
EFFECTIVE

12:00 Noon PDT until 7:30 PM PDT Thursday, April 27, 2017

7:00 AM PDT until 7:30 PM PDT Friday, April 28, 2017

7:00 AM PDT until 6:00 PM PDT Saturday, April 29, 2017



# TABLE OF CONTENTS

## CAMARILLO PILOT INFORMATION PACKET

### NOTAM—TEMPORARY VFR PROCEDURES 01-09

|  |    |
|--|----|
| VFR Arrivals Overview.....   | 01 |
| VFR Procedures: Arrivals over Lake Casitas.....                    | 02 |
| Graphics—Oxnard Financial Plaza to Camarillo Airport .....         | 03 |
| Graphic—Camarillo Airport (CMA) .....                              | 03 |
| VFR Holding Pattern: Lake Casitas VFR Hold graphics.....           | 04 |
| VFR Procedures: Arrivals over Castaic Junction/Magic Mountain..... | 05 |
| Graphics—Castaic Junction/Magic Mountain.....                      | 06 |
| Graphics—Fillmore to Conejo Grade to Camarillo Airport (CMA).....  | 06 |
| VFR Holding Pattern: Fillmore VFR Hold graphics .....              | 07 |
| IFR Delays.....  | 08 |
| Airport Closure.....   | 08 |
| Aerobatic Demonstration .....                                      | 08 |
| Local Training and Practice Approaches.....                        | 08 |
| No Radio Aircraft.....   | 08 |
| Student Pilots .....   | 08 |
| Noise Abatement Procedures.....                                    | 08 |
| Cautions .....   | 08 |
| Camarillo Airport (CMA) Frequencies.....                           | 09 |
| Enroute Frequency Overview.....                                    | 09 |
| Waypoint Information .....   | 09 |

### GENERAL INFORMATION 10

|  |    |
|--|----|
| Camarillo Airport diagram—graphic..... | 10 |
| Non-movement Areas .....               | 10 |
| Parking Areas .....                    | 10 |
| Vehicular Traffic .....                | 10 |
| Preflight Planning.....                | 10 |

### DEPARTURE PROCEDURES 11-12

|                             |    |
|-----------------------------|----|
| IFR Departures.....         | 11 |
| VFR Departures.....         | 11 |
| - VFR Flight Following..... | 11 |
| - Prior to Start-up.....    | 11 |

|                                     |    |
|-------------------------------------|----|
| - Engine Start .....                | 11 |
| - Run-up .....                      | 11 |
| - Taxi .....                        | 11 |
| - Departure .....                   | 11 |
| - Departure Runway 26—graphic ..... | 12 |
| - Departure Runway 8—graphic .....  | 12 |

## **KNEEBOARD QUICK REFERENCE GRAPHICS ..... 13-14**

|   |    |
|---|----|
| VFR Arrivals: Lake Casitas & Lake Casitas Hold .....                | 13 |
| VFR Arrivals: Castaic Junction/Magic Mountain & Fillmore Hold ..... | 14 |

## **ADDITIONAL INFORMATION ..... 15-20**

|                                   |    |
|-----------------------------------|----|
| Host FBO information .....        | 15 |
| Channel Islands Aviation .....    | 15 |
| Western Cardinal Inc. ....        | 15 |
| Sun Air Jets .....                | 15 |
| Air 7 .....                       | 16 |
| Parking and Service Details ..... | 16 |
| Chocks and Tie Downs .....        | 16 |
| Camping .....                     | 16 |
| After-hours departure .....       | 16 |
| Rental car availability .....     | 16 |

## **RELIEVER AIRPORT OPTION ..... 16**

|                            |    |
|----------------------------|----|
| Oxnard Airport (OXR) ..... | 16 |
|----------------------------|----|

## **OTHER AREA AIRPORTS ..... 16-17**

|   |    |
|---|----|
| Santa Paula Airport (SZP) .....             | 16 |
| Van Nuys Airport (VNY) .....                | 16 |
| Whiteman Airport (WHP) .....                | 17 |
| Santa Monica Municipal Airport (SMO) .....  | 17 |
| Santa Barbara Municipal Airport (SBA) ..... | 17 |

|||||

**ADDITIONAL GRAPHICS.....18-22**

Landing Runway 26 at CMA .....18

Landing Runway 8 at CMA .....18

Show Center at Camarillo Airport.....19

Oxnard Airport (OXR)--satellite view with frequencies .....20

Santa Paula Airport (SZP)--satellite view with frequencies .....20

Whiteman Airport (WHP)--satellite view with frequencies .....21

Van Nuys Airport (VNY)—satellite view with frequencies .....21

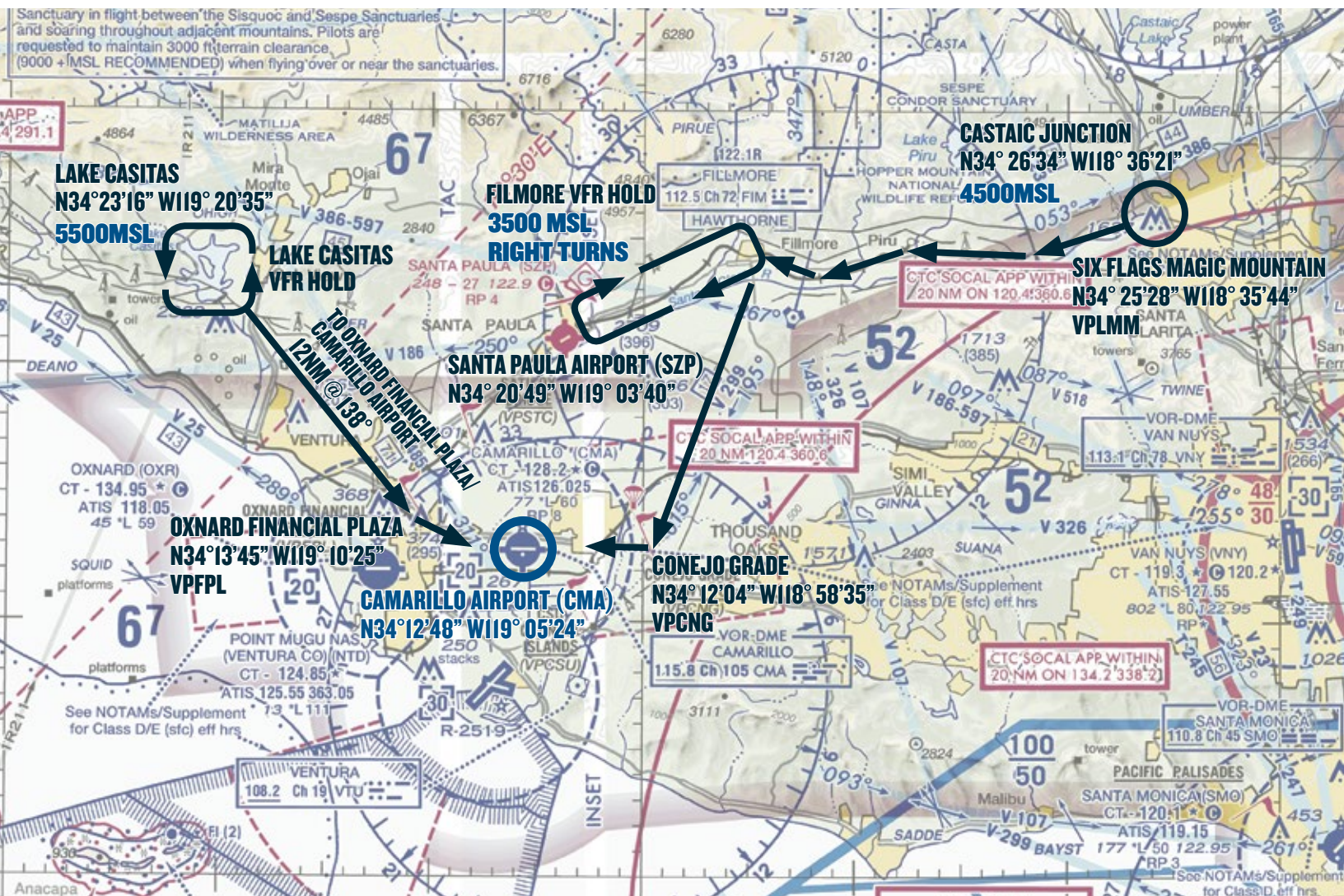
Santa Monica Airport Municipal Airport (SMO)—satellite view with frequencies ..... 22

Santa Barbara Municipal Airport (SBA)—satellite view with frequencies ..... 22

**PRINTABLE AOPA WINDSHIELD GRAPHIC ..... 23**



# VFR ARRIVALS OVERVIEW



ATIS: 126.025    POINT MUGU APPROACH: 124.7    CAMARILLO TOWER: 128.2    CAMARILLO GROUND: 121.8

## TEMPORARY VFR PROCEDURES

Specific procedures contained within this NOTAM may be revised at the time of the event. Pilots are urged to review all applicable NOTAMs and arrival/departure procedures prior to conducting a flight to Camarillo Airport. Users are encouraged to check NOTAMs frequently to verify they possess the most current revisions. This NOTAM does not supersede restrictions pertaining to the use of airspace contained in FDC NOTAMS.

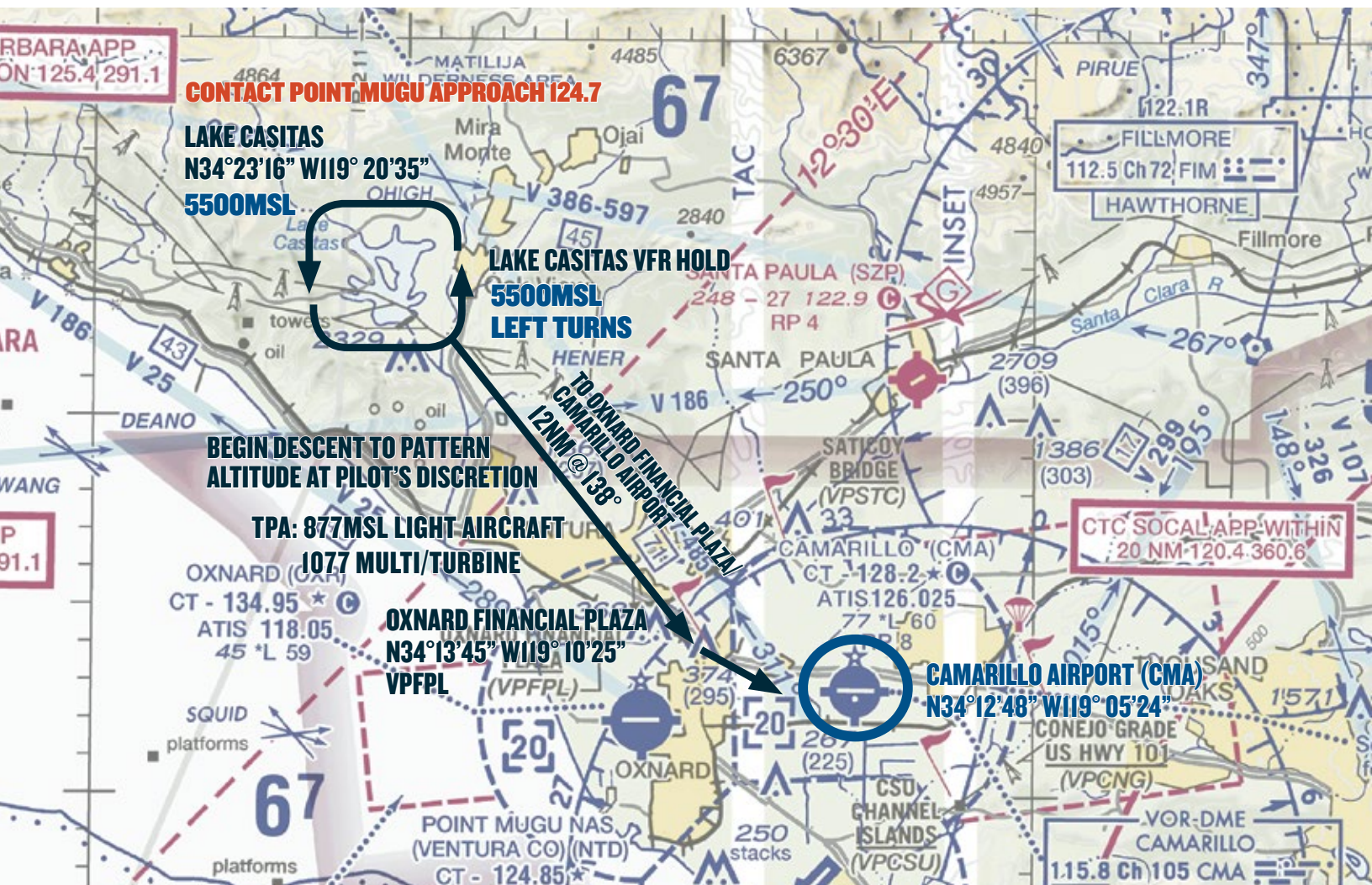
## ALL VFR ARRIVALS MUST BEGIN AT

1. Lake Casitas, 17 NM northwest of Camarillo Airport (CMA), or
2. Castaic Junction near Magic Mountain Amusement Park, 28 NM northeast of Camarillo Airport (CMA)



# VFR PROCEDURES

## ARRIVALS OVER LAKE CASITAS



ATIS: 126.025    POINT MUGU APPROACH: 124.7    CAMARILLO TOWER: 128.2    CAMARILLO GROUND: 121.8

### CHECK CAMARILLO ATIS ON 126.025 AS SOON AS PRACTICAL.

This procedure begins over Lake Casitas at **5500 feet MSL**. If not already in communication with ATC, contact Point Mugu Approach on **124.7** prior to arriving over Lake Casitas. Do not proceed beyond Lake Casitas until in contact with Point Mugu Approach.

**Caution: Stay alert for converging traffic.**

If instructions to continue inbound have not been received or if traffic volume requires holding, follow the hold procedure as depicted in the *LAKE CASITAS HOLD GRAPHIC*. All aircraft should fly **left turns** at **5500 feet MSL**.

**Caution: Stay alert for converging traffic as well as other traffic that might be holding over Lake Casitas.**

When holding is no longer required, aircraft should complete the hold and expect to fly direct to Oxnard Financial Plaza, 12 NM southeast of Lake Casitas on an approximate heading of 138°. Oxnard Financial Plaza is located just west of the Ventura Freeway (101) approximately 3.5 NM west northwest of Camarillo Airport.

Begin descent to traffic pattern altitude at pilot's discretion.

**CMA TPA: 877 feet MSL light aircraft; 1077 feet MSL multi-engine/turbine aircraft**

Expect radar services to be terminated prior to reaching Oxnard Financial Plaza and to be instructed to contact Camarillo Tower on **128.2**.

From Oxnard Financial Plaza, Camarillo Airport is 3.5 NM southeast on an approximate heading of 105°. Depending on wind conditions, expect to fly a left downwind for runway 26 or a straight in final for runway 8. Do not cross the 101 until after passing Rose Avenue.

After landing, do not stop on the runway unless absolutely necessary. Exit the runway as quickly and as safely as possible. Continue forward far enough so as not to block subsequent arrivals. **UNLESS OTHERWISE INSTRUCTED BY ATC; continue to taxiway Foxtrot and MONITOR Ground on 121.8.** At taxiway Foxtrot, follow Marshalls' instructions to the designated parking areas.



# OXNARD FINANCIAL PLAZA TO CAMARILLO AIRPORT



ATIS: 126.025

POINT MUGU APPROACH: 124.7

CAMARILLO TOWER: 128.2

CAMARILLO GROUND: 121.8

## CAMARILLO AIRPORT (KCMA)



ATIS: 126.025

POINT MUGU APPROACH: 124.7

CAMARILLO TOWER: 128.2

CAMARILLO GROUND: 121.8



## LAKE CASITAS VFR HOLD



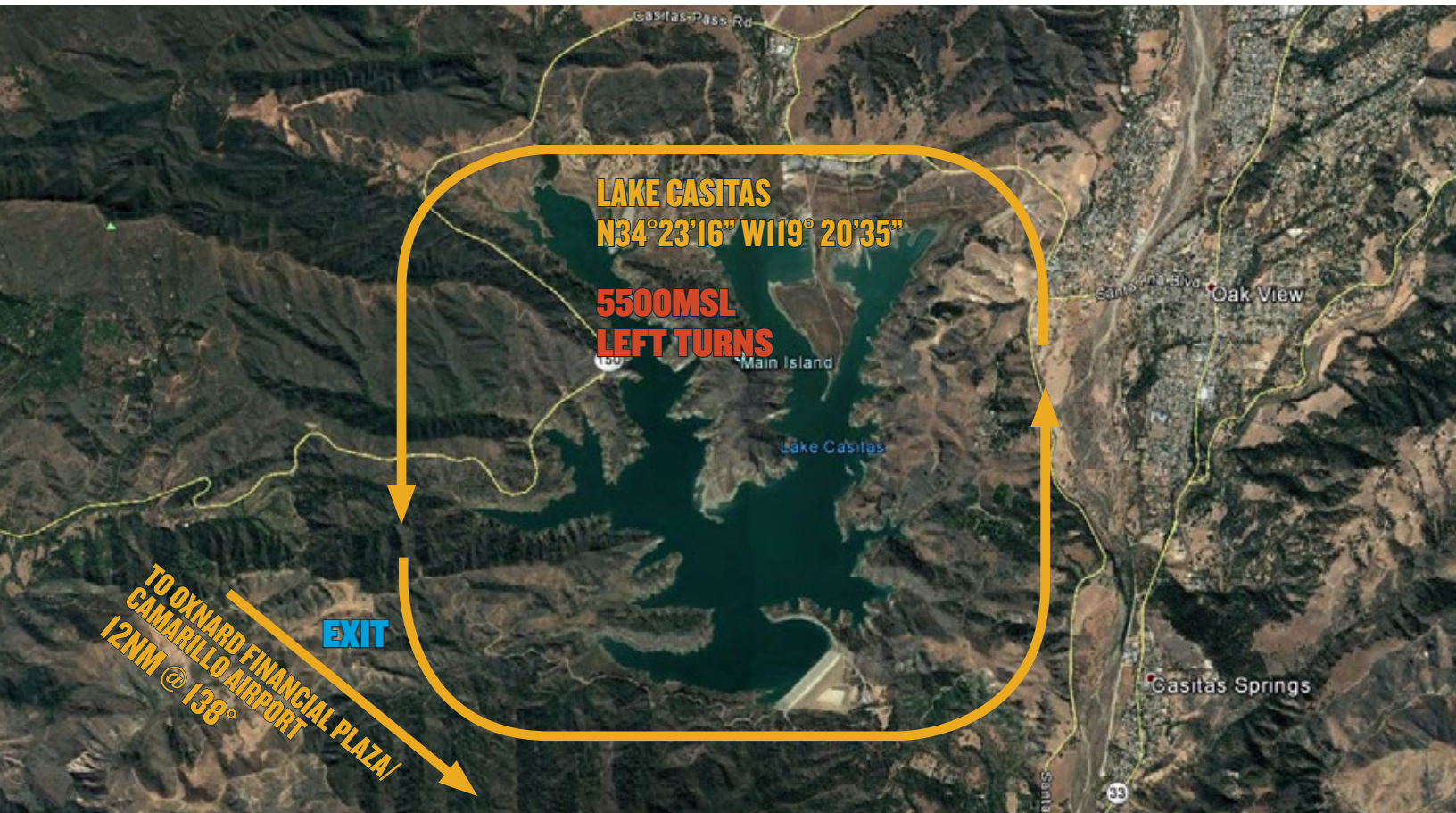
ATIS: 126.025

POINT MUGU APPROACH: 124.7

CAMARILLO TOWER: 128.2

CAMARILLO GROUND: 121.8

## LAKE CASITAS VFR HOLD



ATIS: 126.025

POINT MUGU APPROACH: 124.7

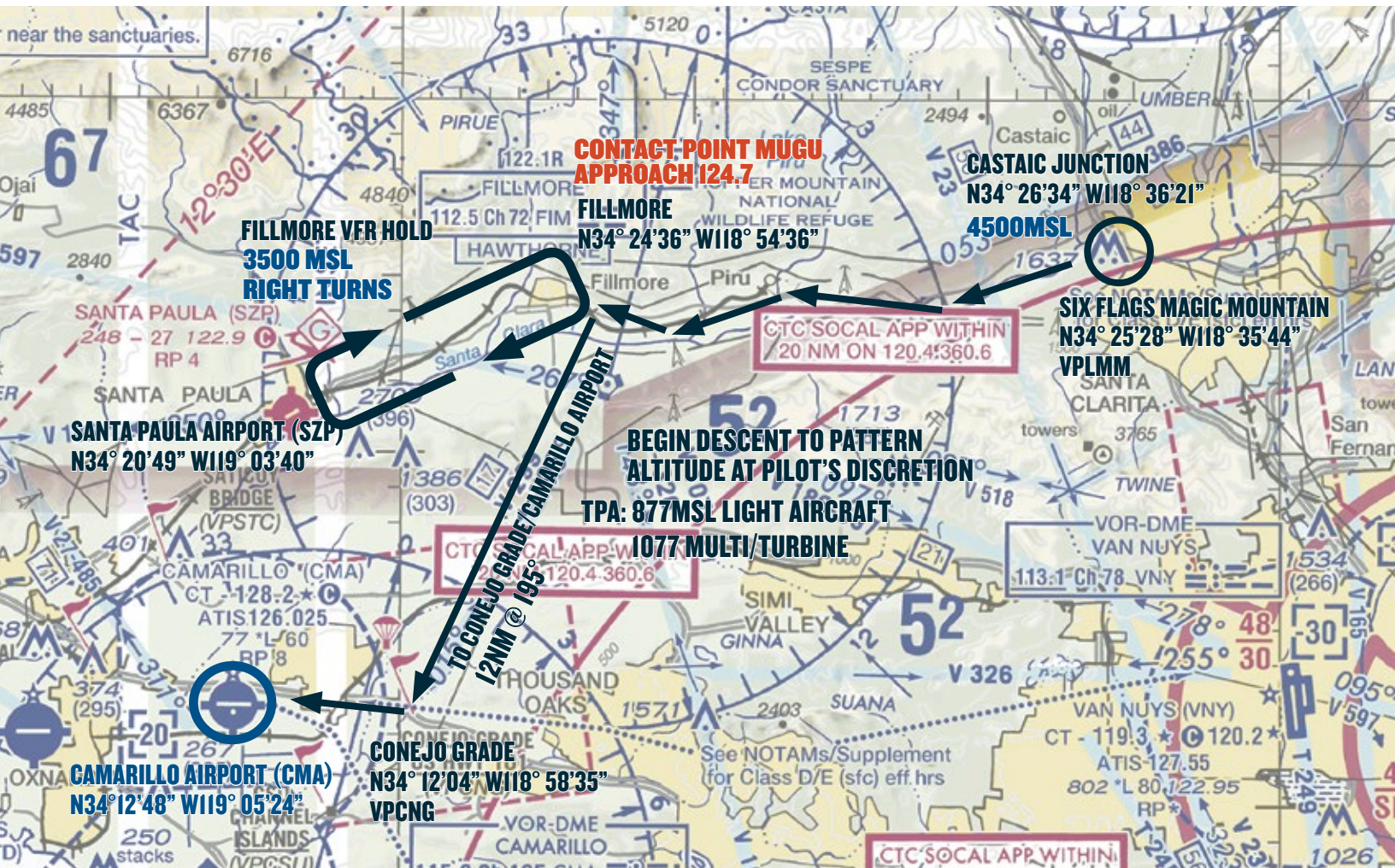
CAMARILLO TOWER: 128.2

CAMARILLO GROUND: 121.8



# VFR PROCEDURES

## ARRIVALS OVER CASTAIC JUNCTION/MAGIC MOUNTAIN (INTERSECTION OF I-5 AND 126)



ATIS: 126.025

POINT MUGU APPROACH: 124.7

CAMARILLO TOWER: 128.2

CAMARILLO GROUND: 121.8

### CHECK CAMARILLO ATIS ON 126.025 AS SOON AS PRACTICAL.

This procedure begins at Castaic Junction just north of the Magic Mountain Amusement Park at **4500 feet MSL**.

**Caution: Stay alert for converging traffic.**

From Castaic Junction, follow the Santa Clara River west towards the city of Fillmore; approximately 15 NM. Descend to **3500 feet MSL** prior to reaching Fillmore. If not already in communication with ATC, contact Point Mugu Approach on **124.7** prior to reaching Fillmore.

If instructions to continue inbound toward the Camarillo Airport have not been received or if traffic volume requires holding, follow the hold procedure as depicted in the *FILLMORE HOLD GRAPHIC*. All aircraft should fly **right turns** at **3500 feet MSL**.

**Caution: Stay alert for converging traffic or other traffic already in the Fillmore Hold.**

When holding is no longer required, aircraft should complete the hold and continue inbound toward the Conejo Grade. Conejo Grade is 12 NM from Fillmore on an approximate heading of 195°.

Begin descent to traffic pattern altitude at pilot's discretion.

**CMA TPA: 877 feet MSL light aircraft; 1077 feet MSL multi-engine/turbine aircraft**

Expect radar services to be terminated prior to reaching the Conejo Grade and to be instructed to contact Camarillo Tower on **128.2**.

From the Conejo Grade, Camarillo Airport is 5 NM west on an approximate heading of 260°. Depending on wind conditions, expect

to fly a straight in final for runway 26 or a right downwind for runway 8.

After landing, do not stop on the runway unless absolutely necessary. Exit the runway as quickly and as safely as possible. Continue forward far enough so as not to block subsequent arrivals. **UNLESS OTHERWISE INSTRUCTED BY ATC;** continue to taxiway Foxtrot and **MONITOR Ground on 121.8**. At taxiway Foxtrot, follow Marshaller's instructions to the designated parking areas.



# CASTAIC JUNCTION/MAGIC MOUNTAIN

INTERSECTION OF I-5 AND 126



ATIS: 126.025

POINT MUGU APPROACH: 124.7

CAMARILLO TOWER: 128.2

CAMARILLO GROUND: 121.8

# FILLMORE TO CONEJO GRADE TO CAMARILLO AIRPORT (CMA)



ATIS: 126.025

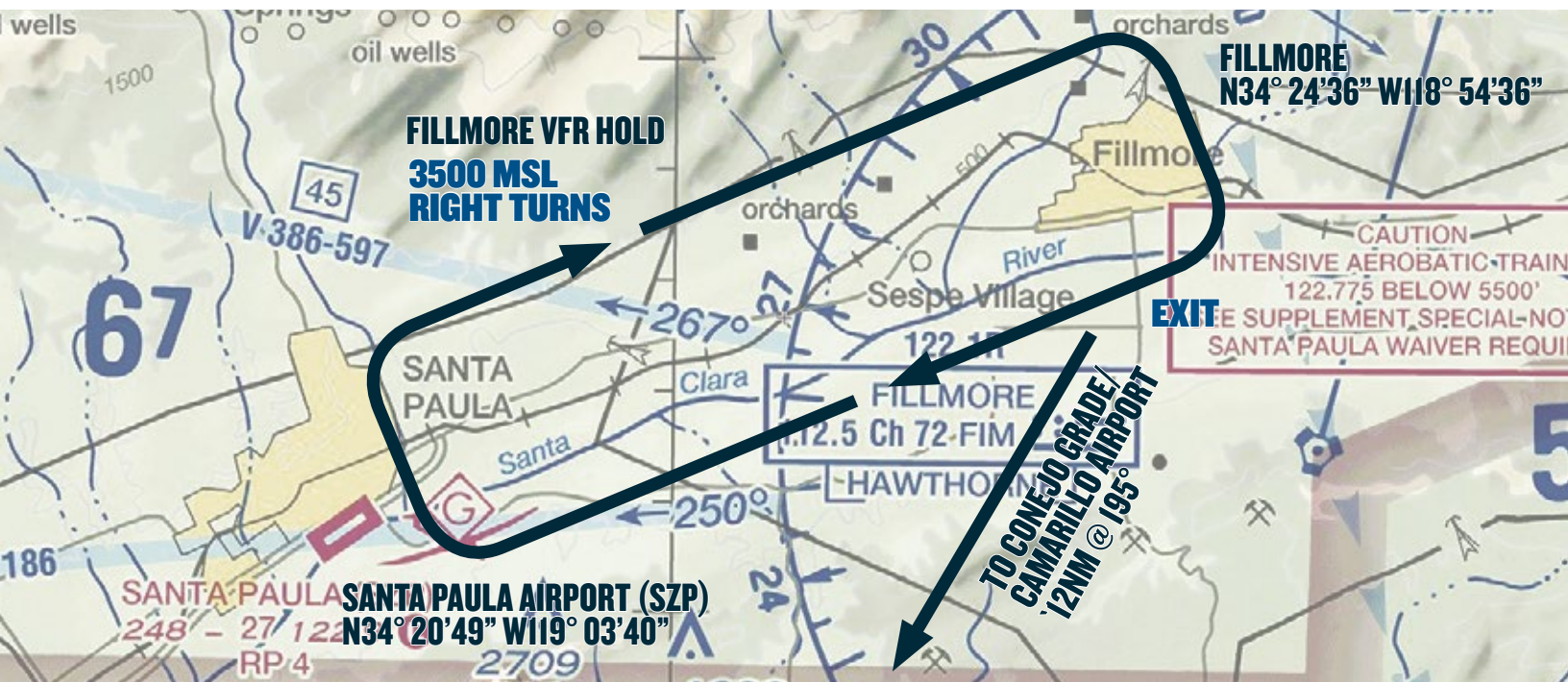
POINT MUGU APPROACH: 124.7

CAMARILLO TOWER: 128.2

CAMARILLO GROUND: 121.8



## FILLMORE VFR HOLD



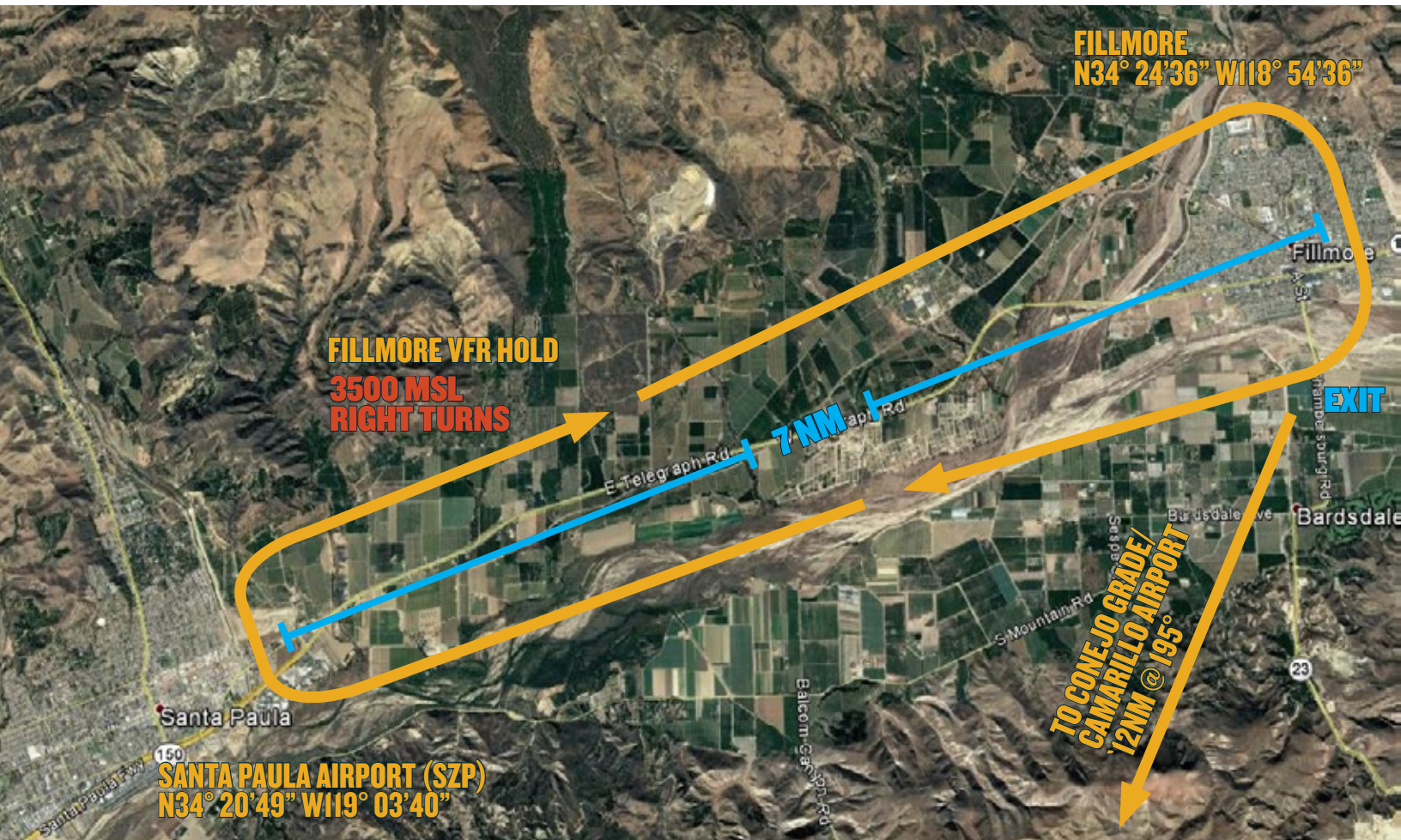
ATIS: 126.025

POINT MUGU APPROACH: 124.7

CAMARILLO TOWER: 128.2

CAMARILLO GROUND: 121.8

## FILLMORE VFR HOLD



ATIS: 126.025

POINT MUGU APPROACH: 124.7

CAMARILLO TOWER: 128.2

CAMARILLO GROUND: 121.8



## IFR DELAYS

IFR reservations are not required, however due to heavy arrival traffic for the event IFR arrivals and departures will be severely limited. IFR separation requirements may cause delays when arrival rates exceed airport capacity. Pilots on an IFR flight plan should be prepared for potential holding. IFR flight plans to Camarillo Airport should be filed **at least 2 hours prior** to proposed departure time. **VFR flight on designated arrival routes is highly recommended if practical.**

## AIRPORT CLOSURE

Camarillo Airport will be closed from sunset to sunrise on Thursday, April 27 to Friday, April 28 and on Friday, April 28 to Saturday, April 29. A **Prior Permission Required (PPR)** number is required to land or depart. IFR arrival or departure requires 24 hour notice. To obtain a PPR number, please call 805-947-6803.

**Camarillo Airport will be closed for arrivals on Saturday, April 29 from 3:00 PM to 6:00 PM local time during the expected heavy departure window.**

## AEROBATIC DEMONSTRATION

There will be an aerobatic demonstration between 12:00 Noon-1:00 PM local on Saturday, April 29, 2017 during the AOPA Fly-in. Arrivals and departures **will be stopped** for the duration of the demonstration. Please plan accordingly.

## LOCAL TRAINING AND PRACTICE APPROACHES

Local traffic pattern, closed traffic training, and practice instrument approaches **may not** be available at Camarillo Airport or Oxnard Airport (OXR) during the AOPA Fly-In.

## NO RADIO AIRCRAFT

Due to high density traffic, aircraft operations without a radio are not recommended.

## STUDENT PILOTS

Due to high density traffic, solo student pilot operations are not recommended.

## NOISE ABATEMENT PROCEDURES

Camarillo is a noise sensitive community. Please avoid overflights of developed areas of the city if possible. If assigned right traffic for runway 26, enter downwind just east of Central Avenue and fly downwind over the 101 Freeway. Turn base as soon as practical or when advised by Camarillo Tower.

## CAUTIONS

Possible lengthy delays associated with heavy arrival and departure times. Heavy arrivals expected 8:00 AM—11:00 AM Friday and Saturday. Heavy departures expected 3:00 PM—6:00 PM on Saturday.

Aircraft parking operations near the approach to runway 26

Be alert to high performance military aircraft operating in the vicinity of Camarillo Airport

Be alert to wildlife on or in the vicinity of Camarillo Airport

Unlighted mountain 1173 feet MSL beginning 5 miles from east end of runway 26

Unlighted mountain 1814 feet MSL beginning 5 miles to the east southeast of approach end of runway 26

Channel Islands National Monument and Marine Sanctuary west and southwest of Camarillo Airport (Flight operations below 1000 feet AGL over the designated areas within the marine sanctuary violate NOAA regulations 15 CFR 922)

Multiple Warning Areas west, southwest, and northwest of Camarillo Airport

Parachute Operations approximately 5 NM northeast of CMA at 8000 feet MSL and below

Special military activity 23 NM north of Camarillo Airport

**Class D Airspace;** Oxnard Airport (OXR)

**Class D Airspace;** Point Mugu NAS (NTD)

**Class D Airspace;** Van Nuys Airport (VNY)

**Class D Airspace;** Whiteman Airport (WHP)

**Class C Airspace;** Bob Hope Airport (BUR)

**Class C Airspace;** Santa Barbara Airport (SBA)

**Class B Airspace;** Los Angeles International Airport (LAX)



# FREQUENCY & WAYPOINT INFORMATION

## ENROUTE FREQUENCIES

|   |       |
|---|-------|
| Point Mugu Approach—Lake Casitas Arrival                    | 124.7 |
| Point Mugu Approach—Castaic Junction/Magic Mountain Arrival | 124.7 |

## CAMARILLO AIRPORT FREQUENCIES

|                               |                                    |
|-------------------------------|------------------------------------|
| Camarillo ATIS                | 126.025                            |
| ATIS telephone number         | 805-484-3351                       |
| Camarillo Tower               | 128.2                              |
| Camarillo Ground              | 121.8                              |
| Camarillo CTAF                | 128.2                              |
| Point Mugu Approach           | 124.7 (128.65 secondary frequency) |
| Point Mugu Departure          | 124.7                              |
| Camarillo Clearance Delivery  | 118.1 (7:00 AM-9:00 PM local)      |
| Point Mugu Clearance Delivery | 120.75 (9:00 PM-11:00 PM local)    |

## SPECIFIC LATITUDE/LONGITUDE COORDINATES

### Arrivals Over Lake Casitas

|                         |                         |
|-------------------------|-------------------------|
| Lake Casitas            | N34°23'16"/W119° 20'35" |
| Oxnard Financial Plaza  | N34°13'45"/W119° 10'25" |
| Camarillo Airport (CMA) | N34°12'48"/W119° 05'24" |

### Arrivals Over Castaic Junction/Magic Mountain

|                         |                          |
|-------------------------|--------------------------|
| Castaic Junction        | N34° 26'34"/W118° 36'21" |
| Magic Mountain          | N34° 25'28"/W118° 35'44" |
| Fillmore                | N34° 24'36"/W118° 54'36" |
| Conejo Grade            | N34° 12'04"/W118° 58'35" |
| Camarillo Airport (CMA) | N34° 12'48"/W119° 05'24" |

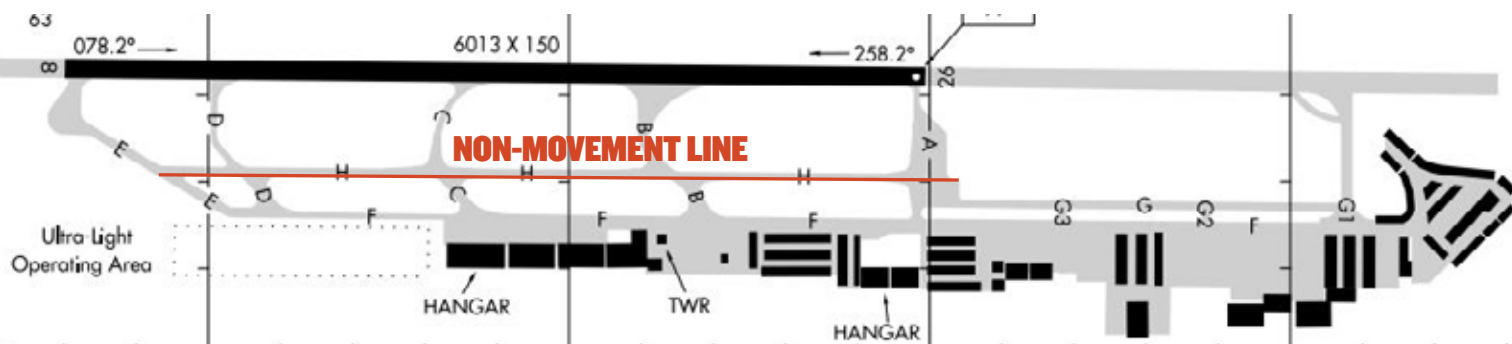
### Departing Camarillo Airport

|                           |                         |
|---------------------------|-------------------------|
| Lake Casitas              | N34°23'16"/W119° 20'35" |
| Santa Paula Airport (SZP) | N34°20'49"/W119° 03'40" |



# GENERAL INFORMATION

## CAMARILLO AIRPORT



### NON-MOVEMENT AREAS DURING THE FOLLOWING TIMES.

**7:00 AM LOCAL FRIDAY, APRIL 28, 2017 UNTIL 7:00 AM LOCAL SUNDAY, APRIL 30, 2017**  
**TAXIWAY F, G, G1, G2, AND G3. TAXIWAY A, B, C, D, AND E SOUTH OF TAXIWAY H.**



**ATIS: 126.025**

**POINT MUGU APPROACH: 124.7**

**CAMARILLO TOWER: 128.2**

**CAMARILLO GROUND: 121.8**

### PARKING AREAS

- When operating in the parking areas, pilots are encouraged to be extra alert for taxiing aircraft, aircraft with engine(s) running, and vehicle/pedestrian traffic.
- Marshalls will be assisting aircraft to and from parking areas and run-up areas.
- For safety reasons, high RPM engine running is prohibited in designated parking areas. For departure, it is recommended that pilots conduct their run-up procedures in queue if practical.
- Please review the parking map prior to landing and departure.

### VEHICULAR TRAFFIC

Vehicles are not allowed on ramps except those belonging to airport operators and tenants, and exhibitors participating in the AOPA Camarillo Airport Fly-In.

### PRE-FLIGHT PLANNING

- Please ensure that you have reviewed the special flight information, departure procedures, and temporary taxi procedures prior to engine start.
- High density traffic is expected Friday and Saturday morning. Consider arriving during off-peak hours.



# DEPARTURE PROCEDURES

## CAMARILLO AIRPORT

### IFR DEPARTURES

Follow marshallers instructions to taxi to the nearest designated IFR departure holding area. IFR departures should obtain a clearance from Camarillo Clearance Delivery on **118.1** (7:00 AM--9:00 PM local) or Point Mugu Clearance Delivery on 120.75 (9:00 PM—11:00 PM local). Reservations required at least 24 hours in advance for IFR departures during the time the airport is officially closed.

**DO NOT CONTACT CAMARILLO GROUND on 121.8 UNTIL YOU ARE READY TO DEPART.**

### VFR DEPARTURES

**VFR Flight Following:** Pilots wanting VFR flight-following should make the request to the appropriate ATC facility when clear of CMA airspace. *VFR Traffic Advisories/Flight Following will be provided on a workload-permitting basis only.*

Point Mugu Approach: **124.7**

SoCal Approach:

- Below 6500 feet MSL; **134.2**
- Above 6500 feet MSL; **128.75**

*Pilots are encouraged to remain at or below 8500 feet MSL if practical to avoid air carrier arrival and departure flows.*

**Prior to Start-up:** Please ensure that you have reviewed the special flight information, departure procedures, and temporary taxi procedures prior to engine start. Check ATIS on **126.025**.

**Engine Start:** Locate a marshaller to monitor engine start.

**Run-up:** If practical, it is recommended that you conduct your run-up while in queue for departure. Please consider propeller blast during your run-up.

**Taxi:** Follow instructions from Marshallers and contact Camarillo Ground on **121.8** when holding short of taxiway H or A. (Monitor ground control frequency prior to transmitting.)

**Departure:** Contact Camarillo Tower on **128.2** when number 1 for departure. Be prepared for immediate take-off.

### Departing runway 26

- Departing West thru North; unless otherwise instructed by ATC, fly direct toward Lake Casitas after departure. Turn on course when clear of CMA/OXR airspace.
- All other directions; unless otherwise instructed by ATC, fly direct toward the Santa Paula Airport (SZP) after departure. Turn on course when clear of CMA airspace.

### Departing runway 8

- Departing West thru North; unless otherwise instructed by ATC, turn left after departure and fly direct toward Lake Casitas. Turn on course when clear of CMA airspace.
- All other directions; unless otherwise instructed by ATC, turn left after departure and fly direct toward Santa Paula Airport (SPZ). Turn on course when clear of CMA airspace.



## DEPARTURE PROCEDURES

RUNWAY 26 IN USE



ATIS: 126.025

POINT MUGU APPROACH: 124.7

CAMARILLO TOWER: 128.2

CAMARILLO GROUND: 121.8

## DEPARTURE PROCEDURES

RUNWAY 8 IN USE



ATIS: 126.025

POINT MUGU APPROACH: 124.7

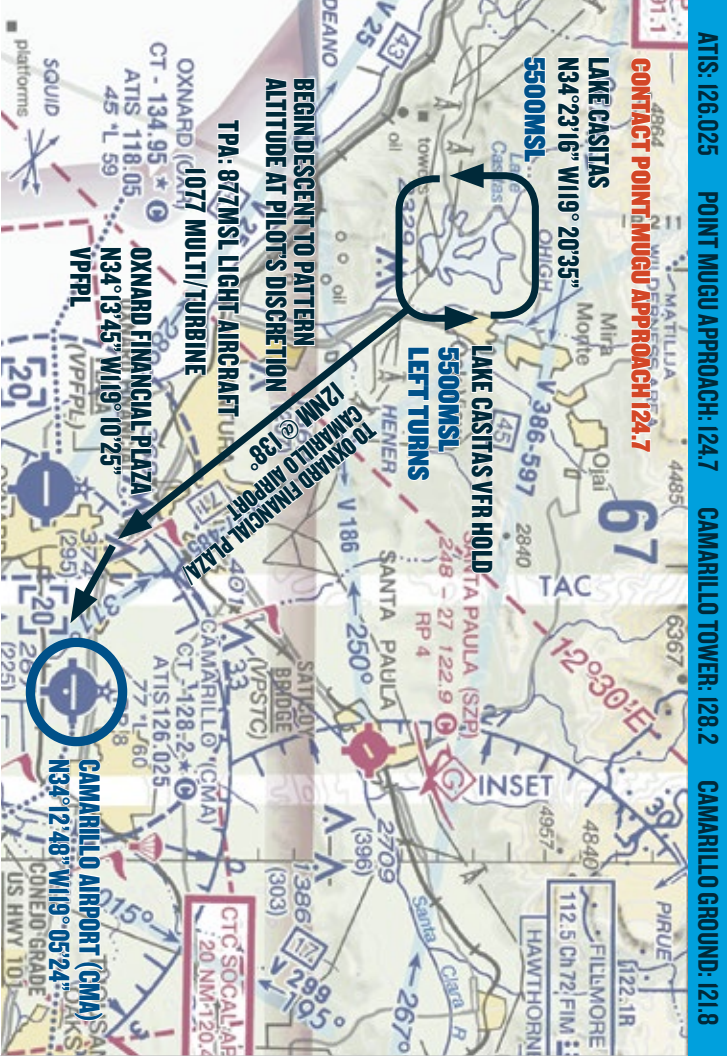
CAMARILLO TOWER: 128.2

CAMARILLO GROUND: 121.8



# VFR PROCEDURES

## ARRIVALS OVER LAKE CASITAS



### LAKE CASITAS HOLD



# VFR PROCEDURES

## ARRIVALS OVER LAKE CASITAS

**Check Camarillo ATIS on 126.025**

Procedure begins over Lake Casitas at 5500 feet MSL. If not already in communication with ATC, contact **Point Mugu Approach on 124.7** prior to arriving over Lake Casitas. Do not proceed beyond Lake Casitas until in contact with Point Mugu Approach.

**Caution: Stay alert for converging traffic.**

If instructions to continue inbound have not been received or if traffic volume requires holding, follow the hold procedure as depicted in the **LAKE CASITAS HOLD GRAPHIC**. All aircraft should fly **left turns at 5500 feet MSL**.

**Caution: Stay alert for converging traffic as well as traffic in the Lake Casitas hold.**

When holding is no longer required, aircraft should complete the hold and expect to fly direct to Oxnard Financial Plaza, 12 NM southeast of Lake Casitas on an approximate heading of 138°. Oxnard Financial Plaza is located west of the Ventura Freeway (101) approximately 3.5 NM west northwest of Camarillo Airport.

Begin descent to traffic pattern altitude at pilot's discretion.

**CMA TPA: 877 feet MSL light aircraft, 1077 feet MSL multi-engine/turbine aircraft**

Expect radar services to be terminated prior to reaching Oxnard Financial Plaza and to be instructed to contact **Camarillo Tower on 128.2**.

From Oxnard Financial Plaza, Camarillo Airport is 3.5 NM southeast on an approximate heading of 105°. Depending on wind conditions, expect to fly a left downwind for runway 26 or a straight in final for runway 8. Do not cross the 101 until after passing Rose Avenue.

After landing, do not stop on the runway unless absolutely necessary. Exit the runway as quickly and as safely as possible. Continue forward far enough so as not to block subsequent arrivals. **UNLESS OTHERWISE INSTRUCTED BY ATC, continue to taxiway Foxtrof and MONITOR Ground on 121.8.**

At taxiway Foxtrof, follow Marshalls' instructions.

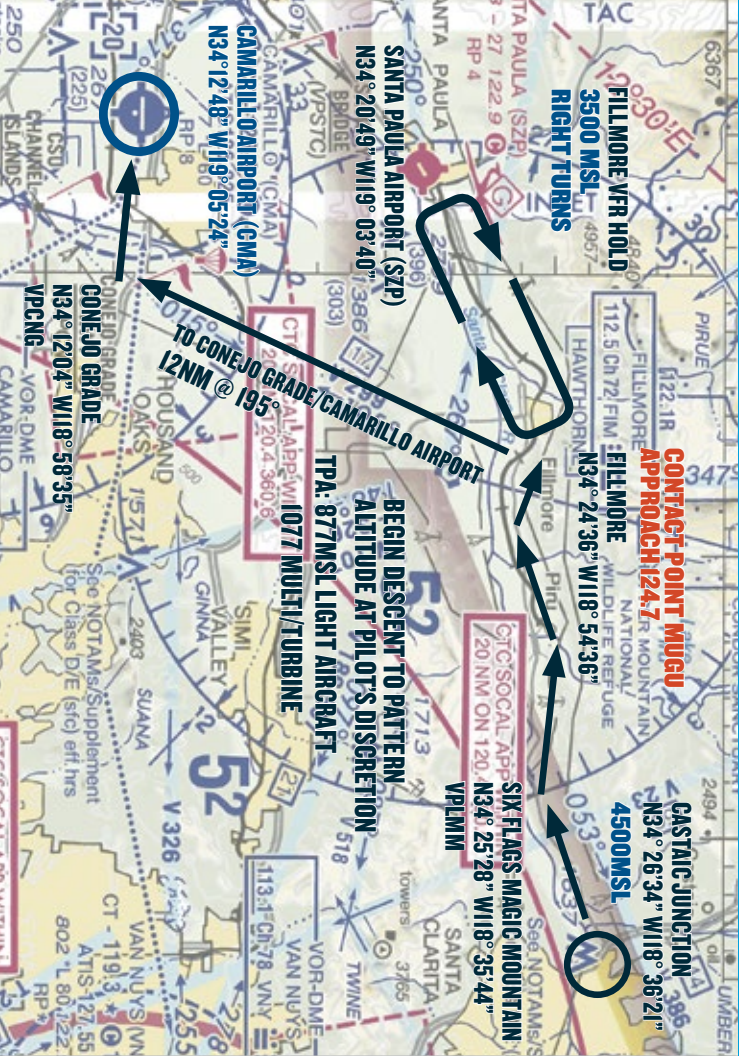




# VFR PROCEDURES

ARRIVALS OVER CASTAIC JUNCTION/MAGIC MOUNTAIN

ATIS: 126.025    POINT MUGU APPROACH: 124.7    CAMARILLO TOWER: 128.2    CAMARILLO GROUND: 121.8



## FILLMORE HOLD



# VFR PROCEDURES

ARRIVALS OVER CASTAIC JUNCTION/MAGIC MOUNTAIN

ATIS: 126.025    POINT MUGU APPROACH: 124.7    CAMARILLO TOWER: 128.2    CAMARILLO GROUND: 121.8

## Check Camarillo ATIS on 126.025

Procedure begins at Castaic Junction just north of the Magic Mountain Amusement Park at 4500 feet MSL.

## Caution: Stay alert for converging traffic.

Follow the Santa Clara River west towards the city of Fillmore, approximately 15 NM. Descend to 3500 feet MSL prior to reaching Fillmore. If not already in communication with ATC, contact **Point Mugu Approach on 124.7** prior to reaching Fillmore.

If instructions to continue inbound toward Camarillo Airport have not been received or if traffic volume requires holding, follow the hold procedure as depicted in the **FILLMORE HOLD GRAPHIC**. All aircraft should fly right turns at 3500 feet MSL.

## Caution: Stay alert for converging traffic as well as traffic in the Fillmore Hold.

When holding is no longer required, aircraft should complete the hold and continue inbound toward the Conejo Grade. Conejo Grade is 12 NM from Fillmore on an approximate heading of 195°.

Begin descent to traffic pattern altitude at pilot's discretion.

**CMA TPA: 877 feet MSL light aircraft; 1077 feet MSL multi-engine/turbine aircraft**

Expect radar services to be terminated prior to reaching the Conejo Grade and to be instructed to contact **Camarillo Tower on 128.2**.

From the Conejo Grade, Camarillo Airport is 5 NM west on an approximate heading of 260°. Depending on wind conditions, expect to fly a straight in final for runway 26 or a right downwind for runway 8.

After landing, do not stop on the runway unless absolutely necessary. Exit the runway as quickly and as safely as possible. Continue forward far enough so as not to block subsequent arrivals. **UNLESS OTHERWISE INSTRUCTED BY ATC, continue to taxiway Foxtrot and MONITOR Ground on 121.8**. At taxiway Foxtrot, follow Marshalls' instructions to the designated parking areas.





# ADDITIONAL INFORMATION

## CAMARILLO PILOT INFORMATION PACKET

### AOPA FLY-IN HOST FBOS AT CAMARILLO AIRPORT (CMA)

The AOPA Fly-In Host FBOs at Camarillo Airport (CMA) are Channel Islands Aviation, Western Cardinal Inc., Sun Air Jets, and Air 7. We thank them for their support, enthusiasm, and participation in the AOPA Fly-In at CMA.



#### Channel Islands Aviation

305 Durley Avenue  
Camarillo, CA 93010

Hours of operation:  
Monday-Sunday 7:00 AM – 7:00 PM

Phone: 805-987-1301  
Fax: 805-987-8301  
Email: [cia@flycia.com](mailto:cia@flycia.com)  
Website: <http://www.flycia.com/>



#### Sun Air Jets

855 Aviation Drive  
Camarillo, CA 93010

Hours of operation:  
Monday-Sunday 24/7

Phone: 805-389-9301  
Fax: 805-987-4720  
Email: [info@sunairjets.com](mailto:info@sunairjets.com)  
Website: <http://www.sunairjets.com/>



#### Western Cardinal, Inc./Cardinal Air Center

205 Durley Avenue  
Camarillo, CA 93010

Hours of operation:  
Monday-Sunday 8:00 AM – 6:00 PM

Phone: 800-882-3018  
Fax: 805-484-2713  
Email: [info@westerncardinal.com](mailto:info@westerncardinal.com)  
Website: <http://www.westerncardinal.com/home.php>



#### Air 7

575 Aviation Drive  
Camarillo, CA 93010

Hours of operation:  
Monday-Sunday 24/7

Phone: 805-383-1100  
Fax: 805-383-2037  
Email: [cma@flyair7.com](mailto:cma@flyair7.com)  
Website: <http://www.flyair7.com/>

### PARKING AND SERVICE DETAILS

Fuel/oil orders will be taken at the time your aircraft is parked. If you need either, please make sure to make the request at that time. Orders made at a later time might delay your departure. Credit card information will be requested at the time the order is placed. Receipts if requested will be emailed or available in the FBO. Order slip will be attached to propeller. If you are uncomfortable providing credit card information on the ramp, you can provide the information directly to the FBO's front desk.

### CHOCKS AND TIE DOWNS

Chocks will be available **in limited quantities** so we highly recommend that you bring your own. Tie down hooks are scattered on the ramp and parking on tie down spaces is unlikely. It is recommended that you bring tie-downs and anchors for any additional aircraft securing needs.



## CAMPING

Aircraft camping will be permitted at Camarillo Airport (CMA) from Noon on Thursday, April 27 until Noon on Sunday, April 30. Space is limited and will be available on a first-come, first-served basis. If you plan to camp, you must RSVP ahead of time. A confirmation will be sent with additional information. Camping aircraft will be requested to prominently display the letter C in the windshield. **See the AOPA website for more information.**

## AFTER-HOURS DEPARTURES

If you will be departing after the airport's normal operating hours, please contact the after-hours Line Service number for the FBO that serviced your aircraft. An after-hours callout is subject to an additional fee.



## RENTAL CAR AVAILABILITY

Phone: 866-315-9155

Also available: Hertz.

## RELIEVER AIRPORT OPTION TO AVOID HIGH DENSITY TRAFFIC AT CAMARILLO AIRPORT

**OXNARD AIRPORT (OXR)** is located 6 miles west of Camarillo Airport (CMA) and is approximately a 20-minute drive to CMA. Oxnard Airport has one hard surface runway. 7/35 is 5953 X 100. The airspace is class D from 7:00 AM to 9:00 PM daily. Other times Class G. Rental cars are available through Enterprise at 866-315-9155/805-382-8350. Also available: Hertz (805-948-7870), Budget (805-985-8888), and Dollar (805-985-0911).

In the event that Fly-in parking reaches capacity at Camarillo Airport, ATC might recommend Oxnard Airport as an alternate. Complimentary ground transportation between Oxnard Airport and Camarillo Airport will be provided by Ventura County and AOPA.

**Complimentary ground transportation will run Saturday April 29th from 8:00am -6:00pm; departing every 10-15 minutes.**

## OTHER AREA AIRPORTS

There are several public use airports that are within a one-hour drive of Camarillo Airport (CMA). You might elect to use one of these airports in the event aircraft parking reaches capacity at CMA. Rental cars are also available at many of these airports.

### Santa Paula Airport

**SANTA PAULA AIRPORT (SZP)** is located 8 NM north of Camarillo Airport (CMA) and is approximately a 30-minute drive to CMA. Santa Paula Airport has one hard surface runway. 4/22 is 2713 X 60. One hard surface helipad. 60 X 60. The airspace is Class G. Rental cars are available through Enterprise at 866-315-9155/805-933-0068. Also available: Hertz (805-339-0585).



**VAN NUYS AIRPORT (VNY)** is located 30 NM east of Camarillo Airport (CMA) and is approximately a 50-minute drive to CMA. Van Nuys Airport has two hard surface runways. 16R/34L is 8001 X 150 and 16L/34R is 4013 X 75. The airspace is Class D and underlies Burbank Class C airspace. Rental Cars are available through Enterprise at 866-315-9155. Hertz and Avis are also available. Also available: Avis (800-230-4898).



**WHITEMAN AIRPORT (WHP)** is located 34 NM northeast of Camarillo Airport (CMA) and is approximately a 55-minute drive to CMA. Whiteman Airport (WHP) has one hard surface runway. 12/30 is 4120 X 75. The airspace

is Class D and underlies Burbank Class C airspace. Rental cars are available through Enterprise at 866-315-9155. Also available: Avis (800-230-4898).



**SANTA MONICA MUNICIPAL AIRPORT (SMO)** is located 34 NM east of Camarillo Airport (CMA) and is approximately a 1-hour drive to CMA. Santa Monica Municipal Airport (SMO) has one hard surface runway. 3/21 is 4973 X 150. One hard surface helipad. 40 X 40. The airspace is Class D

and underlies Los Angeles Class B airspace. Rental cars are available through Enterprise at 866-315-9155.



**SANTA BARBARA MUNICIPAL AIRPORT (SBA)** is located 39 NM west of Camarillo Airport (CMA) and is approximately a 55-minute drive to CMA. Santa Barbara Municipal Airport (SBA) has three hard surface runways. 7/25 is 6052 X 150. 15L/33R is 4180 X 75. 15R/33L is 4184 X 100. One hard surface helipad. The airspace is Class C. Rental cars are available through Enterprise, National, and Alamo at 866-315-9155. Also available: Avis (800-230-4898), Budget (800-218-7992), and Hertz (800-704-4473).



## LANDING RUNWAY 26

CAMARILLO AIRPORT (CMA)



ATIS: 126.025

POINT MUGU APPROACH: 124.7

CAMARILLO TOWER: 128.2

CAMARILLO GROUND: 121.8

## LANDING RUNWAY 8

CAMARILLO AIRPORT (CMA)



ATIS: 126.025

POINT MUGU APPROACH: 124.7

CAMARILLO TOWER: 128.2

CAMARILLO GROUND: 121.8



# SHOW CENTER

CAMARILLO AIRPORT (CMA)

**AIRCRAFT PARKING & CAMPING**

**SHOW CENTER**

**RWY 26**

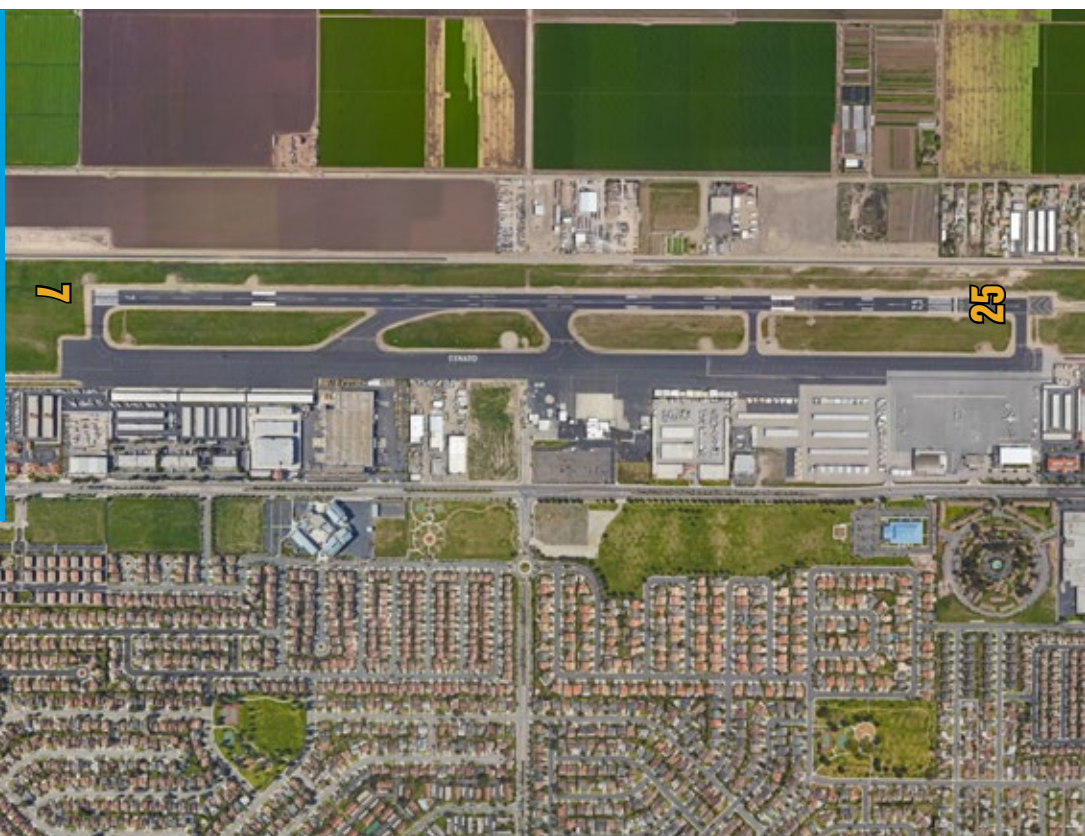
**USE CAUTION WHEN OVERFLYING CAMPING/PARKING AREA**



## OXNARD AIRPORT (OXR)

### FREQUENCIES

|                    |                    |
|--------------------|--------------------|
| APPROACH/DEPARTURE | 124.7              |
| WX                 | .OT (805.382.0569) |
| ATIS               | 118.05             |
| CTAF               | 134.95             |
| GROUND CONTROL     | 121.0              |
| GUERA STAR         | 120.4              |
| TOWER              | 134.95             |



## SANTA PAULA AIRPORT (SZP)

### FREQUENCIES

|      |       |
|------|-------|
| CTAF | 122.9 |
|------|-------|





## WHITEMAN AIRPORT (WHP)

### FREQUENCIES

|                                  |                       |
|----------------------------------|-----------------------|
| APPROACH/DEPARTURE<br>CLASS C IC | 134.2                 |
| APPROACH/DEPARTURE<br>CLASS C IC | 120.4                 |
| ATIS                             | 132.1                 |
| WX                               | 132.1T (818.899.9820) |
| CTAF                             | 135.0                 |
| GROUND CONTROL                   | 125.0                 |
| TOWER                            | 135.0                 |
| UNICOM                           | 122.95                |



## VAN NUYS AIRPORT (VNY)

### FREQUENCIES

|                                |                    |
|--------------------------------|--------------------|
| APPROACH/DEPARTURE<br>CLASS C  | 135.05             |
| APPROACH/DEPARTURE<br>CLASS C  | 124.6              |
| APPROACH/DEPARTURE<br>CLASS IC | 134.2              |
| APPROACH/DEPARTURE<br>CLASS IC | 120.4              |
| WX                             | .0T (818.904.9213) |
| ATIS                           | 127.55             |
| CLEARANCE DELIVERY             | 126.5              |
| CTAF                           | 119.3              |
| GROUND CONTROL                 | 121.7              |





## SANTA MONICA AIRPORT (SMO)

### FREQUENCIES

|                |                         |
|----------------|-------------------------|
| SOCAL APPROACH | 124.9                   |
| SOCAL APPROACH | 124.3                   |
| SOCAL APPROACH | 125.2                   |
| APPROACH IC    | 128.5                   |
| WX             | 118.525T (310.392.6453) |
| ATIS           | 119.5                   |
| CTAF           | 120.1                   |
| DEP/P          | 125.2                   |
| GROUND CONTROL | 121.9                   |
| TOWER          | 120.1                   |



## SANTA BARBARA MUNICIPAL AIRPORT (SBA)

### FREQUENCIES

|                    |                    |
|--------------------|--------------------|
| APPROACH/DEPARTURE | 124.15             |
| APPROACH/DEPARTURE | 127.725            |
| APPROACH/DEPARTURE |                    |
| CLASS IC           | 120.55             |
| APPROACH/DEPARTURE |                    |
| CLASS IC           | 125.4              |
| WX                 | .0T (805.681.9583) |
| ATIS               | 132.65             |
| CLEARANCE DELIVERY | 132.9              |
| CTAF               | 119.7              |
| EMERG              | 121.5              |
| GROUND CONTROL     | 121.7              |
| TOWER              | 119.7              |
| UNICOM             | 122.95             |





**KCMA**  
CAMARILLO AIRPORT



**FLY-IN**  
**04/28**  
**04/29**  
**17**

**CAMARILLO, CA**



**PRINT & PLACE GRAPHIC IN AIRCRAFT WINDSHIELD**